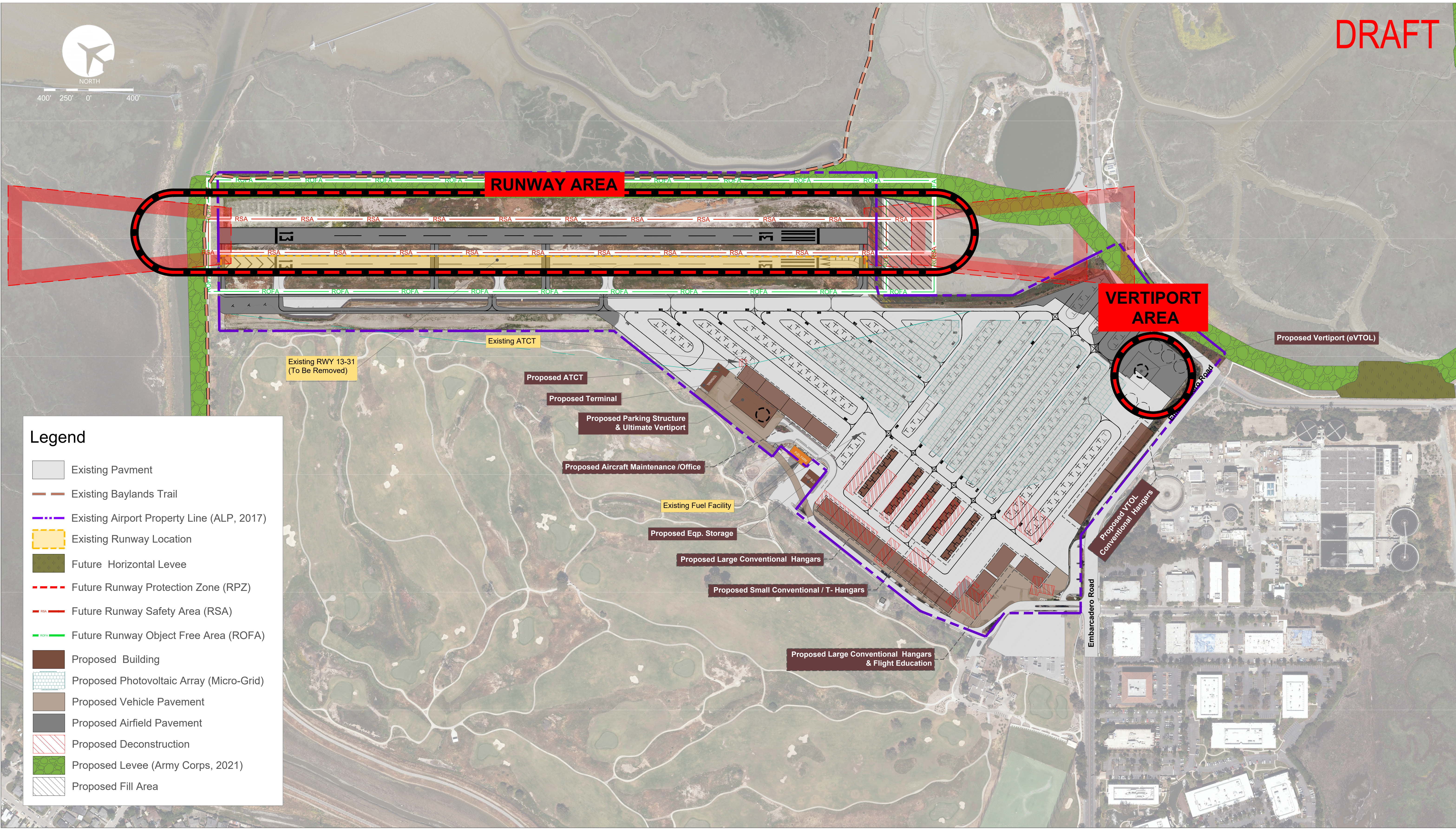


DRAFT



**Legend**

- Existing Pavment
- Existing Baylands Trail
- Existing Airport Property Line (ALP, 2017)
- Existing Runway Location
- Future Horizontal Levee
- Future Runway Protection Zone (RPZ)
- Future Runway Safety Area (RSA)
- Future Runway Object Free Area (ROFA)
- Proposed Building
- Proposed Photovoltaic Array (Micro-Grid)
- Proposed Vehicle Pavement
- Proposed Airfield Pavement
- Proposed Deconstruction
- Proposed Levee (Army Corps, 2021)
- Proposed Fill Area

**Alternative 2 | 2,600 FT Runway with Displaced Thresholds and Northeastern Shift**

Palo Alto Airport Long-Range Facilities & Sustainability Plan (LRFSP)

Source: C&S Engineers, Inc.



May 30, 2024 - 11:54am  
F:\Project\075 - City of Palo Alto\075.001.022 - PAO Airport Master Plan Ph 2\Planning-Study\CADD\Exhibits\Website\Figures\PAO\_Figure 2\_Alt 2.dwg