



# CALIFORNIA AVENUE PARKING GARAGE PROJECT

## REPORT #09: NOVEMBER 2019

### Contents

1. Project Summary
2. Project Activities
3. Photos



### MONTHLY PROGRESS REPORT

### Project Team

**City of Palo Alto**

Matt Raschke  
Colette Chew

**Nova Partners, Inc.**

Jason Luong  
Joe Capps-Jenner  
Hans de Roos

**Watry Design Inc.**

Taylor Kim

**Swinerton Builders**

Paul Rodriguez  
Felipe Carvajal  
Bryan Newman  
Enrique Raygoza  
Milagros Avila

**RDC Architects**

Mallory Cusenbery  
Michael Ross

# California Avenue Garage Project

## November 2019

### MONTHLY REPORT

#### **Project Summary**

The California Avenue Parking Garage project at 350 Sherman Avenue is the first phase of the City of Palo Alto's Infrastructure Program in the California Avenue Business District. This project, in conjunction with the Public Safety Building (PSB), will be constructed on the public parking lots, C-7 and C-6 respectively. The parking garage consists of 627 parking stalls across six parking levels; two below grade and four above grade. Due to the loss of parking in the area, modifications will be constructed at the C-6 parking lot accommodating additional parking prior to groundbreaking for the garage project on parking lot C-7. The footprint of the garage is approximately 32,700-square-feet and will utilize a water-exclusionary shoring system (cut-off wall) to prevent groundwater interference during excavation and minimize the need for dewatering. The exterior façade of the garage will have a combination of architectural baguettes, ceramic tile, cementitious panels and plaster systems to create an aesthetical addition to the neighborhood.

The work will be performed by Swinerton Builders via the contract signed and executed on January 9, 2019. Construction of the parking garage is anticipated to be completed in late-Summer of 2020.

#### **November 2019 Activities**

Swinerton Builders performed the following construction activities in November 2019:

- Lightweight fill under the B2 ramp was placed.
- In-slab MEP installation commenced for the post tension deck at B1.
- Ramp slab as well as the B1 level deck were formed, reinforced and poured.
- B1 level deck will be stressed
- Terra Cotta mockup was constructed and reviewed by the design team.
- Fiber Cement Panel and Emergency Generator System deferred packages were approved by the City.

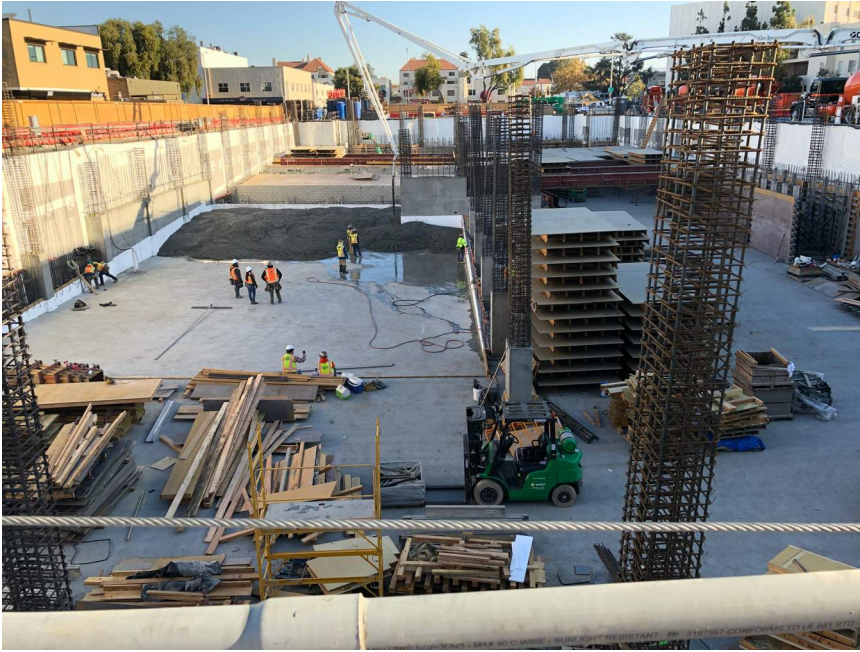
## **Upcoming Activities**

During December 2019 and January 2020, Swinerton Builders expects to perform the following activities:

- Shotcrete activities in the B2 and B1 level will commence.
- Ground level deck will be formed, reinforced and poured.
- Level 1 to Level 2 vertical pours (shear walls and columns) will commence.
- Board form concrete mockup will be constructed for design team review.
- Two-Way communications system deferred package will be submitted to the City for review and approval.

November 2019

## Construction Photos



Lightweight concrete under the B2 ramp being placed.



Cunningham beams and table forms being installed for the B1 deck.





Ramp slab and B1 deck being placed.



1<sup>st</sup> half of B1 deck being placed.