



JLS MIDDLE SCHOOL STUDENTS

SAFE ROUTES TO SCHOOL PROGRAM PARTNERSHIP

Palo Alto Council of PTAs
www.saferoutes.paloaltopta.org



Palo Alto Unified School District
www.pausd.org/student-services/transportation



City of Palo Alto
250 Hamilton Avenue
Palo Alto, CA 94301
650-329-2156
saferoutes@cityofpaloalto.org
www.cityofpaloalto.org/saferoutes



CITY OF
**PALO
ALTO**



Safe Routes to School



A partnership program that promotes
active transportation choices for
students and their families

WHAT IS SAFE ROUTES TO SCHOOL?

SAFE ROUTES TO SCHOOL is a local partnership to improve safety for school commuters and to reduce school commute-related congestion on city streets.

In Palo Alto, our Safe Routes to School program is a collaboration between the City, Palo Alto Council of PTAs, and the Palo Alto Unified School District (PAUSD). Our program is part of a national movement targeting improved safety and active transportation choices for families and communities.

Learn more about Palo Alto Safe Routes to School at www.cityofpaloalto.org/saferoutes

HOW DO WE DO IT?

We do this using a 5 E's approach:



Education: Our Safe Routes to School program teaches pedestrian and bicycle safety skills in all PAUSD elementary and middle schools. We also offer parent, family, and middle school bicycle safety classes. Visit our website to learn more about our education programs.



Encouragement: The City, PAUSD, and PTAs collaborate to organize school and community events and activities that encourage families to try leaving the car at home by walking, bicycling, carpooling, or taking transit more often.



Engineering: School and community input helps us understand school commute challenges. Working together with our partners and City engineers, we plan and implement projects that improve school commute infrastructure for pedestrians, bicyclists, and transit users on public streets, off-road trails, and school campuses.



Enforcement: We coordinate with Palo Alto and Stanford Police on enforcement and safety education. The PAPD also manages the adult crossing guards at critical intersections across the city.



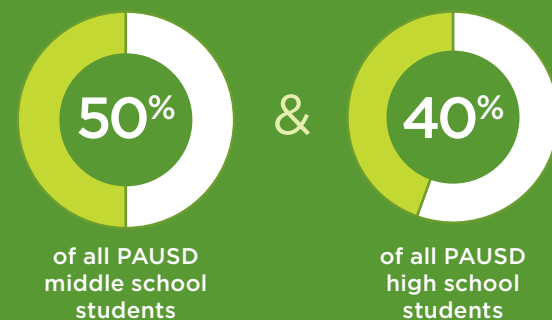
Evaluation: We monitor the success of our program through quantitative and qualitative data including commute mode tallies, automated bicycle and pedestrian counters, and parent and school feedback.



SAFE ROUTES TO SCHOOL AT A GLANCE



THIS REPRESENTS



To get involved or for more information, please visit: www.cityofpaloalto.org/saferoutes