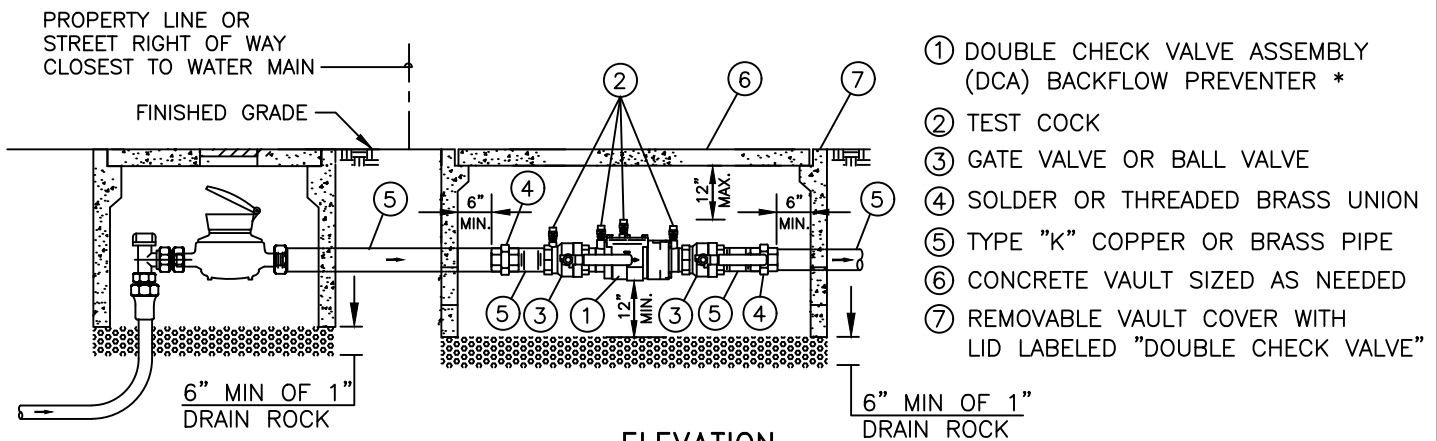


PLAN



ELEVATION

- ① DOUBLE CHECK VALVE ASSEMBLY (DCA) BACKFLOW PREVENTER *
- ② TEST COCK
- ③ GATE VALVE OR BALL VALVE
- ④ SOLDER OR THREADED BRASS UNION
- ⑤ TYPE "K" COPPER OR BRASS PIPE
- ⑥ CONCRETE VAULT SIZED AS NEEDED
- ⑦ REMOVABLE VAULT COVER WITH LID LABELED "DOUBLE CHECK VALVE"

* A FEBCO MODEL LF850 DOUBLE CHECK VALVE ASSEMBLY IS SHOWN FOR ILLUSTRATION PURPOSES

NOTES:

1. BACKFLOW PREVENTERS SHALL BE INSTALLED PER THE C.P.A. UTILITIES RULES & REGULATION AND THE CURRENT STATE OF CALIFORNIA OF PUBLIC HEALTH REGULATIONS CONTAINED IN TITLE 17 OF THE ADMINISTRATIVE CODE.
2. ALL DCVA DEVICES MUST BE LISTED AND APPROVED BY THE FOUNDATION FOR CROSS CONNECTION CONTROL AND HYDRAULIC RESEARCH AT USC AND WGW UTILITIES DEPARTMENT.
3. ALL DEVICES AND COMPONENTS MUST BE CERTIFIED LEAD FREE.
4. BACKFLOW DEVICE AND PIPING SIZE SHALL BE THE SAME SIZE AS THE WATER SERVICE SUPPLY PIPE. IT IS THE OWNER'S PLUMBER RESPONSIBILITY TO PROPERLY SIZE THE WATER SYSTEM AS THESE DEVICES REDUCE THE INLET WATER PRESSURE TO THE BUILDING.
5. THE DEVICE SHALL BE INSTALLED ON THE OWNER'S PROPERTY DIRECTLY BEHIND THE METER WITHIN 5' OF THE PROPERTY LINE OR STREET RIGHT OF WAY CLOSEST TO WATER MAIN.
6. THE DEVICE MUST BE INSPECTED BY BUILDING INSPECTION AND TESTED BY A LICENSED CERTIFIED TESTER REGISTERED WITH THE CITY. SUBMIT TEST RESULTS TO WGW UTILITIES OPERATIONS PROJECT COORDINATOR.
7. DEVICE SHALL BE TESTED IMMEDIATELY AFTER INSTALLATION, RELOCATION, OR REPAIR PRIOR TO BEING INTO SERVICE.
8. BACKFLOW MUST BE EASILY ACCESSIBLE TO FACILITATE ANNUAL TESTING AND MAINTENANCE.
9. PROVIDE 12" MINIMUM CLEARANCE BETWEEN CENTERLINE OF DOUBLE CHECK VALVE ASSEMBLY AND FLOOR OF BOX.

BY	DATE	RESIDENTIAL DOUBLE CHECK VALVE ASSEMBLY - DCVA (1"-2") STANDARD DETAIL	APPROVED: MAY 5, 2021	SCALE: NONE
DRAWN	J.J. 02/19		<i>Silvia Lee Santos</i> SILVIA LEE SANTOS ENGINEERING MANAGER	50674 R.E. NO.
CHECKED	J.J. 02/20		REVISION: MAY 5, 2021	DWG. NO. STD. WD-12C
REVIEWED	R.I. 02/20	CITY OF PALO ALTO, CALIFORNIA		APPENDIX B