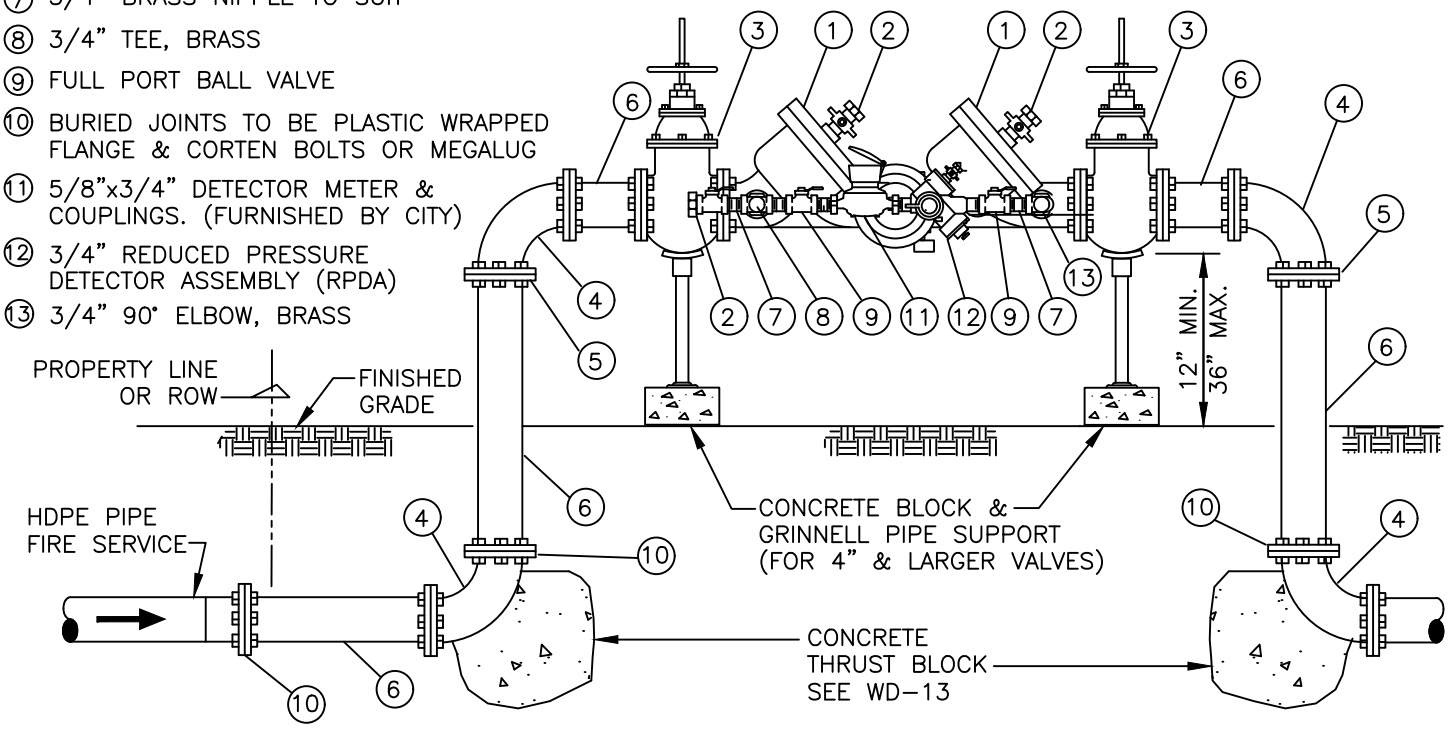


- ① REDUCED PRESSURE DETECTOR ASSEMBLY (RPDA)
- ② TEST COCK W/CAP, 4 REQD
- ③ GATE VALVE
- ④ 90° BEND, FL
- ⑤ FLANGE
- ⑥ DUCTILE IRON PIPE
- ⑦ 3/4" BRASS NIPPLE TO SUIT
- ⑧ 3/4" TEE, BRASS
- ⑨ FULL PORT BALL VALVE
- ⑩ BURIED JOINTS TO BE PLASTIC WRAPPED FLANGE & CORTEN BOLTS OR MEGALUG
- ⑪ 5/8"x3/4" DETECTOR METER & COUPLINGS. (FURNISHED BY CITY)
- ⑫ 3/4" REDUCED PRESSURE DETECTOR ASSEMBLY (RPDA)
- ⑬ 3/4" 90° ELBOW, BRASS



**NOTES:**

1. ALL RPDA DEVICES SHALL BE AS APPROVED BY USC FOUNDATION FOR CROSS-CONNECTION CONTROL AND HYDRAULIC RESEARCH, AND APPROVED BY WATER-GAS-WASTEWATER UTILITIES DEPARTMENT.
2. THE DEVICE SHALL BE INSTALLED ON THE OWNER'S PROPERTY, DIRECTLY BEHIND THE CITY-OWNED METER, WITHIN 5' OF THE PROPERTY LINE.
3. INSPECTION BY THE UTILITIES INSPECTOR IS REQUIRED FOR SUPPLY PIPE BETWEEN METER AND THE VALVES.
4. DOUBLE CHECK DETECTOR ASSEMBLIES MAY ONLY BE USED ON EXISTING FIRE SPRINKLER SYSTEMS AND WITH THE PRIOR APPROVAL OF WATER-GAS-WASTEWATER UTILITIES DEPARTMENT.

BY	DATE	<b>REDUCED PRESSURE DETECTOR ASSEMBLY – RPDA FOR FIRE SERVICES AND SPRINKLERS STANDARD DETAIL</b>	APPROVED: MAY 5, 2021 <i>Silvia Lee Santos</i>	SCALE: NONE
DRAWN	J.J. 9/92		50674 SILVIA LEE SANTOS R.E. NO.	DWG. NO. STD. WD-12A
CHECKED	J.J. 02/20		ENGINEERING MANAGER	
REVIEWED	R.I. 02/20	CITY OF PALO ALTO, CALIFORNIA	REVISION: MAY 5, 2021	APPENDIX B