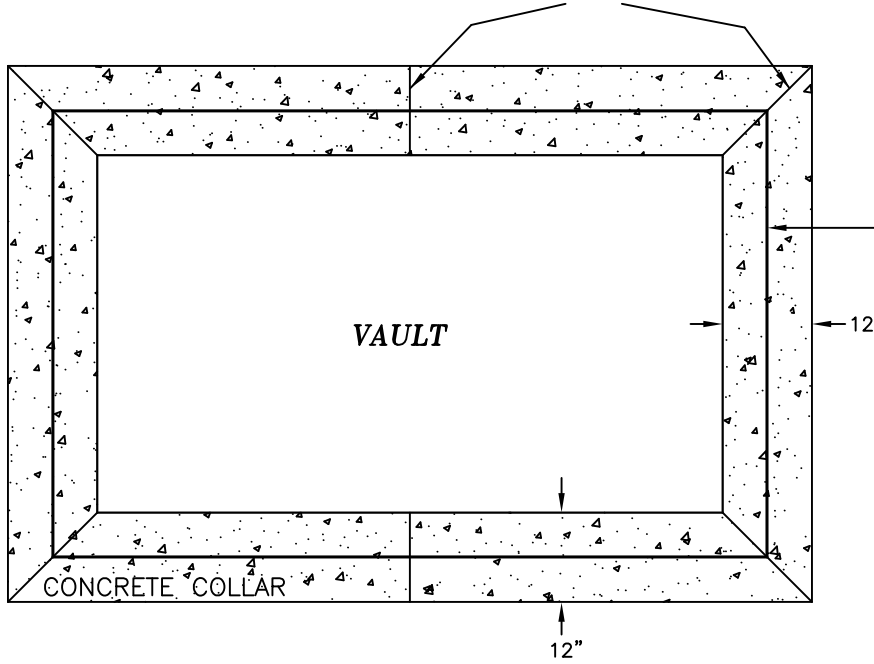
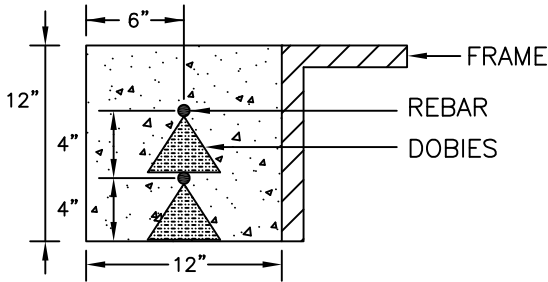


CONTRACTION JOINTS = 1 1/4" DEEP



TOP VIEW



CROSS SECTION VIEW

NOTES:

- 1.) CONCRETE SHALL CONFORM TO THE APPLICABLE REQUIREMENTS OF SECTION 16 OF THE CITY OF PALO ALTO PUBLIC WORKS STANDARDS.
- 2.) USE CLASS 2 CONCRETE – A MIX OF 6 SACKS OF CEMENT PER CUBIC YARD WITH 3/4" AGGREGATE.
- 3.) USE TWO (2) PINTS OF LIQUID LAMPBLACK PER CUBIC YARD.
- 4.) BACKFILL BELOW COLLAR SHALL BE PER CPAU STANDARD DT-SS-U-1002.
- 5.) BROOMED FINISH.

APPROVED _____

ENGINEERING STANDARD
**CONCRETE COLLAR
 SURROUNDING A VAULT**

**CITY OF PALO ALTO
 CALIFORNIA**

ENGR. MANAGER _____

ENGR. _____

DRAWN BY _____

CHECKED BY _____ HN

REV	DATE	DESCRIPTION	APPR
NTS		DT-SS-U-1038	1 OF 1
SCALE		STANDARD NO.	SHEET NO.

*Original Signed
 and Approved
 by Engineering
 Manager*