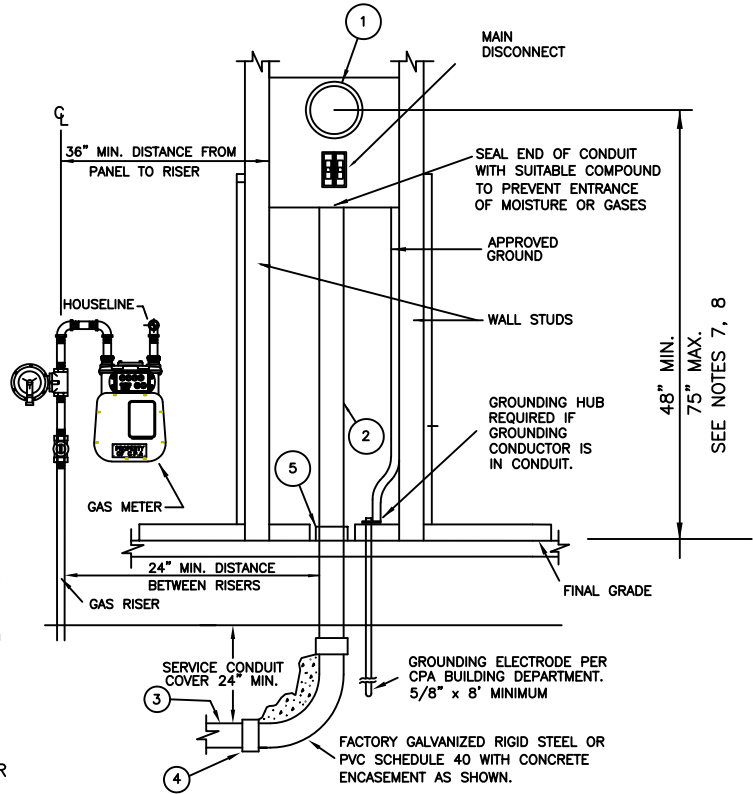
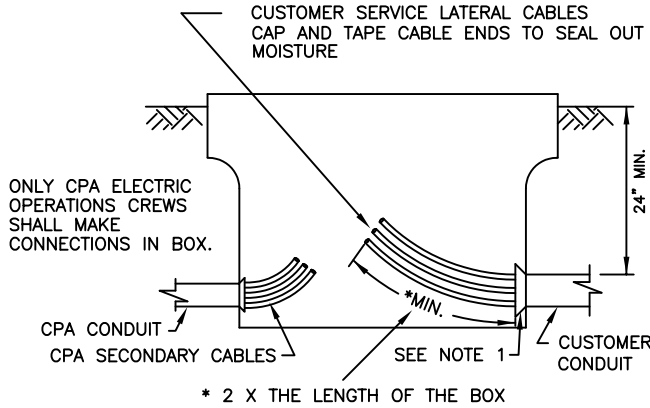


# MATERIALS:

1. METER MOUNTING DEVICE WITH MAIN DISCONNECT BUILT INTO THE SAME CABINET.
2. UNDERGROUND SERVICE ENTRANCE CONDUIT SHALL BE CONTINUOUS; NO BREAKS, OPENINGS, OR LB'S ARE ALLOWED. CONDUIT SHALL BE GALVANIZED RIGID STEEL OR PVC SCH 40.
3. UNDERGROUND CONDUIT SHALL BE PVC SCHEDULE 40, TYPE DB-120, OR HOT DIPPED GALVANIZED RIGID STEEL.
4. PLASTIC TO STEEL ADAPTOR, IF PLASTIC CONDUIT IS USED FOR 3.
5. MAY REDUCE TO CEC REQUIREMENTS.



# NOTES:

1. STEEL CONDUITS SHALL EXTEND 2" MAX. INTO BOX AND SHALL TERMINATE WITH INSULATED BUSHINGS. PLASTIC CONDUITS SHOULD BE TERMINATED WITH BELL ENDS FLUSH WITH THE WALL OF THE BOX. ALL CONDUIT ENTRANCES SHALL BE GROUTED. SEE CPA STANDARD DRAWING DT-SS-U-1002.
2. IF THE GRADE OF THE TOP OF THE UTILITY SERVICE BOX IS MORE THAN ONE FOOT ABOVE THE END OF THE CONDUIT THAT TERMINATES AT THE BUILDING, BOTH ENDS OF THE SERVICE CONDUIT SHALL BE SEALED BY CUSTOMER WITH APPROVED PLUGS. SUFFICIENT MEASURES SHALL BE PROVIDED TO ENSURE WATER DOES NOT ENTER METER.
3. IF THE GRADE OF THE METER IS BELOW THE GRADE OF THE UTILITY BOX, AN ADDITIONAL BOX MUST BE PLACED IN THE GROUND JUST BEFORE THE METER FOR DETAILS PLEASE CONTACT ELECTRIC ENGINEERING
4. CPAU INSPECTOR MUST BE PRESENT WHEN INSTALLING CONDUIT OR PULLING CABLES INTO CPAU BOX.
5. A SPLICE BOX MAY BE REQUIRED IF ALLOWABLE CABLE PULLING TENSION WILL BE EXCEEDED.
6. EXISTING 1 1/2" OR 2" CONDUIT MAY BE ALLOWED FOR PANEL UPGRADES IN THE SAME LOCATION IF THEY MEET AMPACITY AND CONDUIT FILL REQUIREMENTS, AND IS APPROVED BY CPAU ENGINEERING.

7. SEE CPAU ENG STD DWG SR-MT-E-1012 FOR MINIMUM CLEARANCE REQUIREMENTS AROUND METER PANELS AND SR-MT-E-1035 FOR REQUIREMENTS ON METERS INSTALLED IN DRIVEWAYS.
8. PER CEC ARTICLE 404.8(A) THE HIGHEST POSITION OF THE BREAKER HANDLE MUST BE LESS THAN 79" ABOVE GRADE/FLOOR.
9. PRESS ON LUGS ARE REQUIRED FOR CABLE TERMINATIONS ON SERVICE PANELS 400A OR LARGER, SEE PANEL MANUFACTURER FOR APPROVED LUGS.

# SERVICE LATERAL CONDUIT AND CABLE SIZE

Service Voltage (Volts)	Main Service (Amps)	Customer's Minimum Conduit Size	CPAU Approved Conductor Size **	
			AL	CU
120/240 1-phase 3 wire	125	2"	1/0	2
	200	3"	4/0	2/0
	400*	4"	350	4/0
120/208 1-phase 3 wire	200	3"	4/0	2/0

\* CLASS 320 (UNDERGROUND RESIDENTIAL ONLY)  
\*\* CONDUCTOR SIZE IS PER PHASE AND A FULL SIZE NEUTRAL IS REQUIRED.

6	7-20	REV CLRNCE FRM GAS MTR	TT
5	9-16	ADDED 2" CONDUIT EXCEPTION	TT
4	3-16	REV NOTES, TABLE, & DWG	TT
3	5-13	ADDED GAS METER CLEARANCES	TT
2	1-12	REVISED MATERIALS & NOTES	TT
1	10-08	REVISED NOTE 2	TT
REV	DATE	DESCRIPTION	APPR

APPROVED 11/2006  
 Original Signed and Approved by Engineering Manager  
 EGR  
 DRAWN BY MJ  
 CHECKED BY PEV

ENGINEERING STANDARD  
**RESIDENTIAL UNDERGROUND SERVICE REQUIREMENTS**  
 CITY OF PALO ALTO CALIFORNIA

NTS	SR-CN-U-1010	1 of 1
SCALE	STANDARD NO.	SHEET NO.