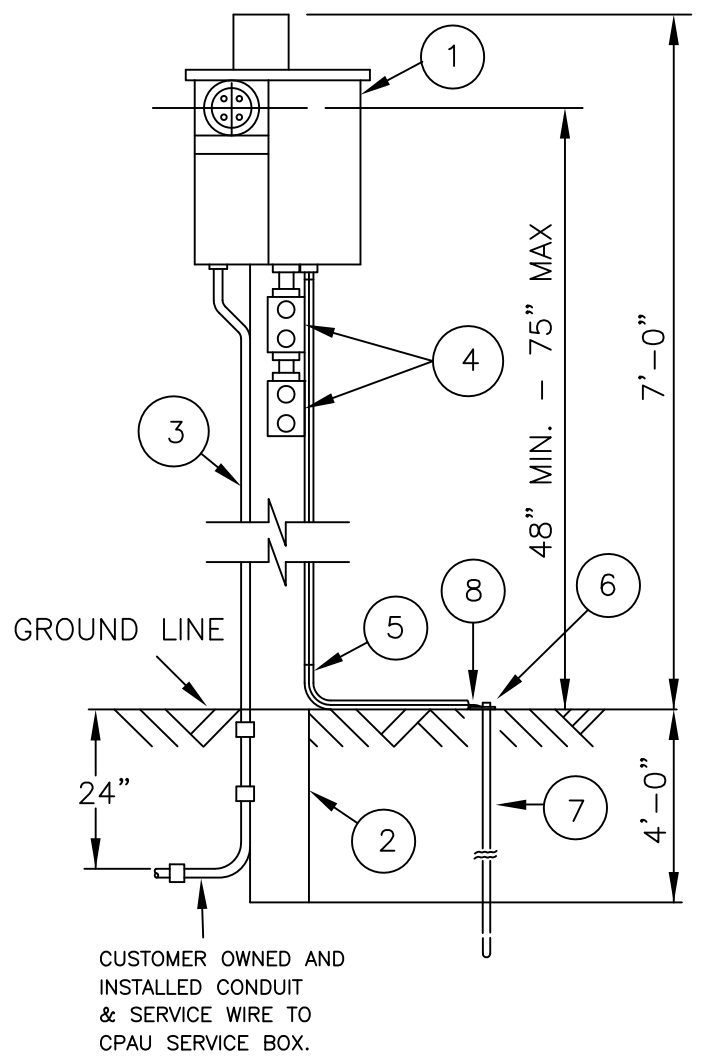


\*\* 2 X THE LENGTH OF THE BOX

ONLY CPA ELECTRIC OPERATIONS CREWS SHALL MAKE CONNECTIONS IN THE BOX

**NOTES:**

1. TRENCH TO BE INSPECTED BY THE ELECTRIC UNDERGROUND INSPECTOR PRIOR TO BACKFILLING. INSPECTOR MUST BE PRESENT WHEN INSTALLING CONDUIT OR PULLING CABLE INTO CPAU BOX.
2. STEEL CONDUITS SHALL EXTEND 2" MAX. INTO BOX AND SHALL TERMINATE WITH INSULATED BUSHINGS. PLASTIC CONDUITS SHOULD BE TERMINATED WITH BELL ENDS FLUSH WITH THE WALL OF THE BOX. ALL CONDUIT ENTRANCES SHALL BE GROUTED.



CUSTOMER OWNED AND INSTALLED CONDUIT & SERVICE WIRE TO CPAU SERVICE BOX.

**SERVICE LATERAL CONDUIT AND CABLE SIZE**

Service Voltage (Volts)	Main Service (Amps)	Customer's Minimum Conduit Size	CPAU Approved Conductor Size **	
			AL	CU
120/240 1-phase 3 wire	125	2"	1/0	2
	200	3"	4/0	2/0
	400*	4"	350	4/0
120/208 1-phase 3 wire	200	3"	4/0	2/0

\* CLASS 320 (UNDERGROUND RESIDENTIAL ONLY)  
 \*\* CONDUCTOR SIZE IS PER PHASE AND A FULL SIZE NEUTRAL IS REQUIRED.

**MATERIALS:**

1. SERVICE TERMINATION ENCLOSURE, COMBINATION METER SOCKET PANEL AND MAIN DISCONNECT
2. POST, MIN. DIM. 4" X 4" X 11'-0".
3. CONDUIT, GALVANIZED RIGID STEEL OR PVC SCH 40, MIN. SIZE 2".
4. WEATHERPROOF OUTLETS.
5. CONDUIT, GALVANIZED RIGID STEEL WITH PIPE STRAP.
6. HUB AND CLAMP GROUNDING.
7. GROUND ROD, 5/8" X 8'
8. GROUND WIRE, BARE COPPER (SIZE IN ACCORDANCE WITH ELECT. CODES & LOCAL REQ.)

APPROVED 11/2006  
 Original Signed and Approved by Engineering Manager  
 PEGR  
 DRAWN BY  
 CHECKED BY PEV

ENGINEERING STANDARD  
 UNDERGROUND TEMPORARY SERVICE  
 CITY OF PALO ALTO  
 CALIFORNIA

3	7/16	REVISED CONDUIT TABLE	TT
2	1/12	REVISED MATERIAL ITEM 3, 5	TT
1	8/08	REVISED	TT
REV	DATE	DESCRIPTION	APPR
NTS	SR-TS-U-1008	1 of 1	
SCALE	STANDARD NO.	SHEET NO.	