

# 5 WAYS TO THINK GLOBALLY & ACT LOCALLY



## MAKE AN IMPACT

**1** Get a Home Electrification Readiness Assessment from Home Efficiency Genie



**3** Convert your gas stove top to an electric induction top



**4** Join 1 in 5 residents by buying an electric car



**2** Convert your water heater or gas furnace to an electric heat pump



**5** Commute to work by bike, e-Bike, walking, transit, or carpooling



## GET INVOLVED & LEARN MORE

Follow the Climate Action Blog Series at [medium.com/@palaltoconnect](https://medium.com/@palaltoconnect)

Sign up for City updates at [www.cityofpalalto.org/newslettersignup](https://www.cityofpalalto.org/newslettersignup)

**[www.cityofpalalto.org/Sustainability](https://www.cityofpalalto.org/Sustainability)**



CITY OF  
**PALO ALTO**

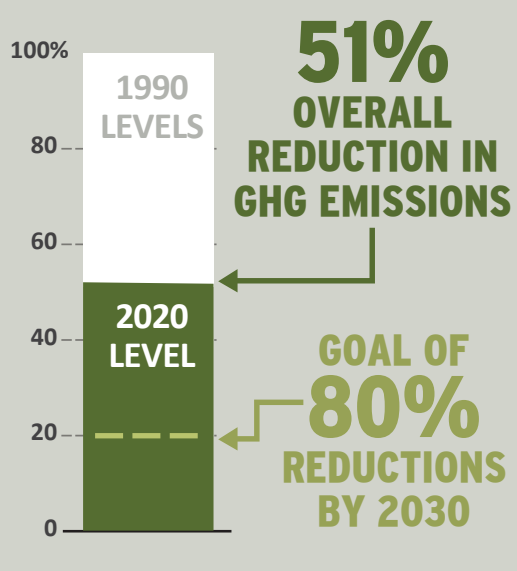
Persons with disabilities who require materials in an appropriate alternative format, auxiliary aids, or modifications to policies or procedures to access City meetings, programs, or services should contact the City's ADA Coordinator George Hoyt at **(650) 329-2550** or by emailing **ADA@cityofpalalto.org**.



Printed on 100% post-consumer recycled paper, bleached without chlorine. 12/22

# BY THE NUMBERS: LOCAL PROGRESS ON CLIMATE ACTION GOALS

Thank you to the community for your work!  
Together, we're on our way to  
reaching our 80x30 goal.



### 100% CARBON-FREE ENERGY SUPPLY

Palo Alto's electricity supply comes from sources such as hydroelectricity, solar, biomass, and wind. To ensure the supply is carbon neutral, electricity demand is matched with a carbon free supply on an annual basis.

An illustration depicting various renewable energy sources. On the left, there are several solar panels. In the center, there are three wind turbines. On the right, there is a hydroelectric dam with water flowing over it. The background shows a bright sun and a clear blue sky.

SINCE 1990, THERE HAS BEEN...

<b>31%</b>	<b>84%</b>	<b>84%</b>	<b>37%</b>	<b>35%</b>
DECREASE IN NATURAL GAS USAGE IN THE BUILDING SECTOR	REDUCTION IN REGIONAL WATER QUALITY CONTROL PLANT GHG EMISSIONS	DIVERSION RATE OF WASTE FROM LANDFILLS	TREE CANOPY COVER ACHIEVED	DECREASE IN VEHICLE EMISSIONS

LEARN ABOUT WAYS TO TAKE LOCAL ACTION ONLINE