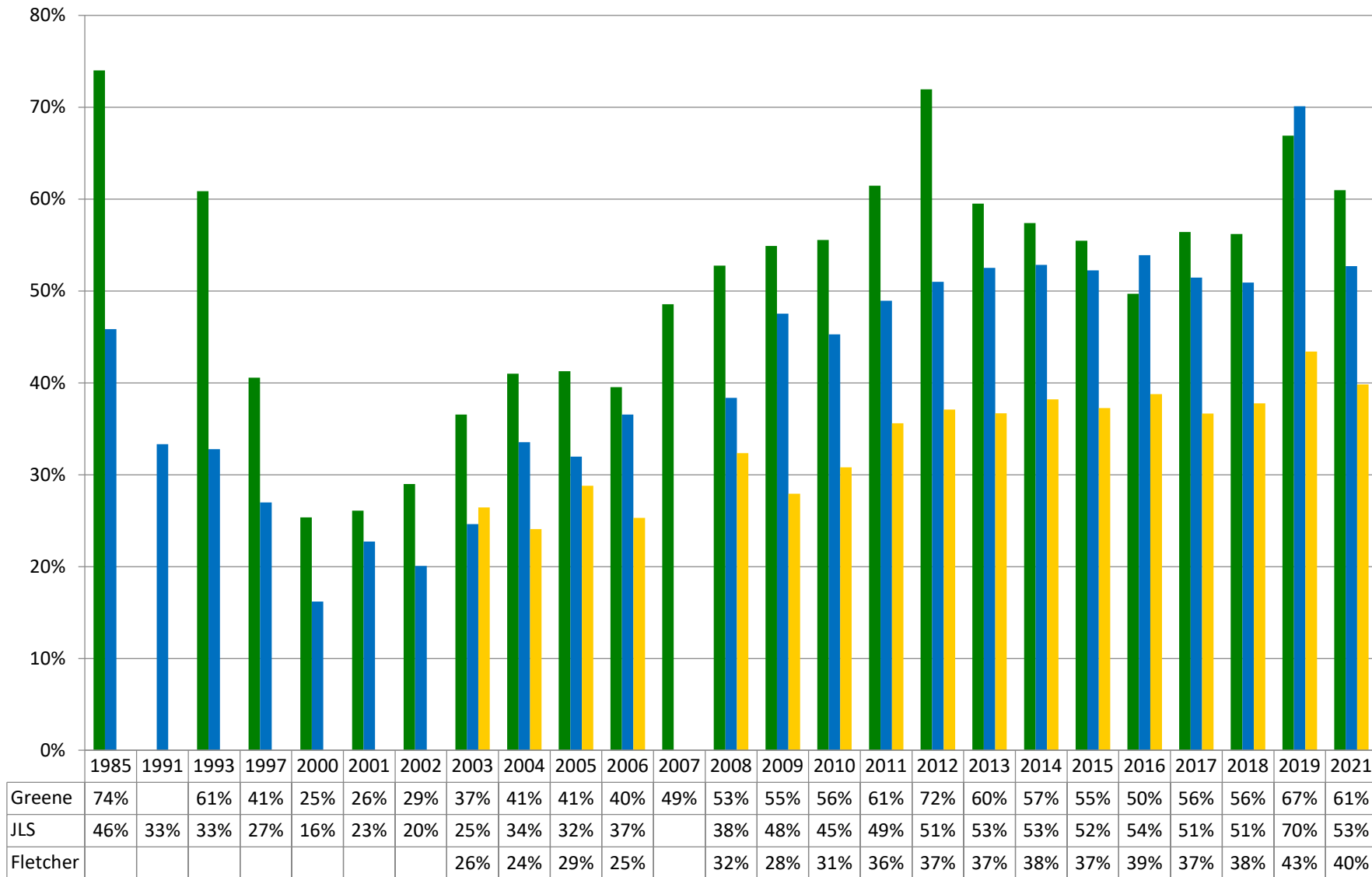
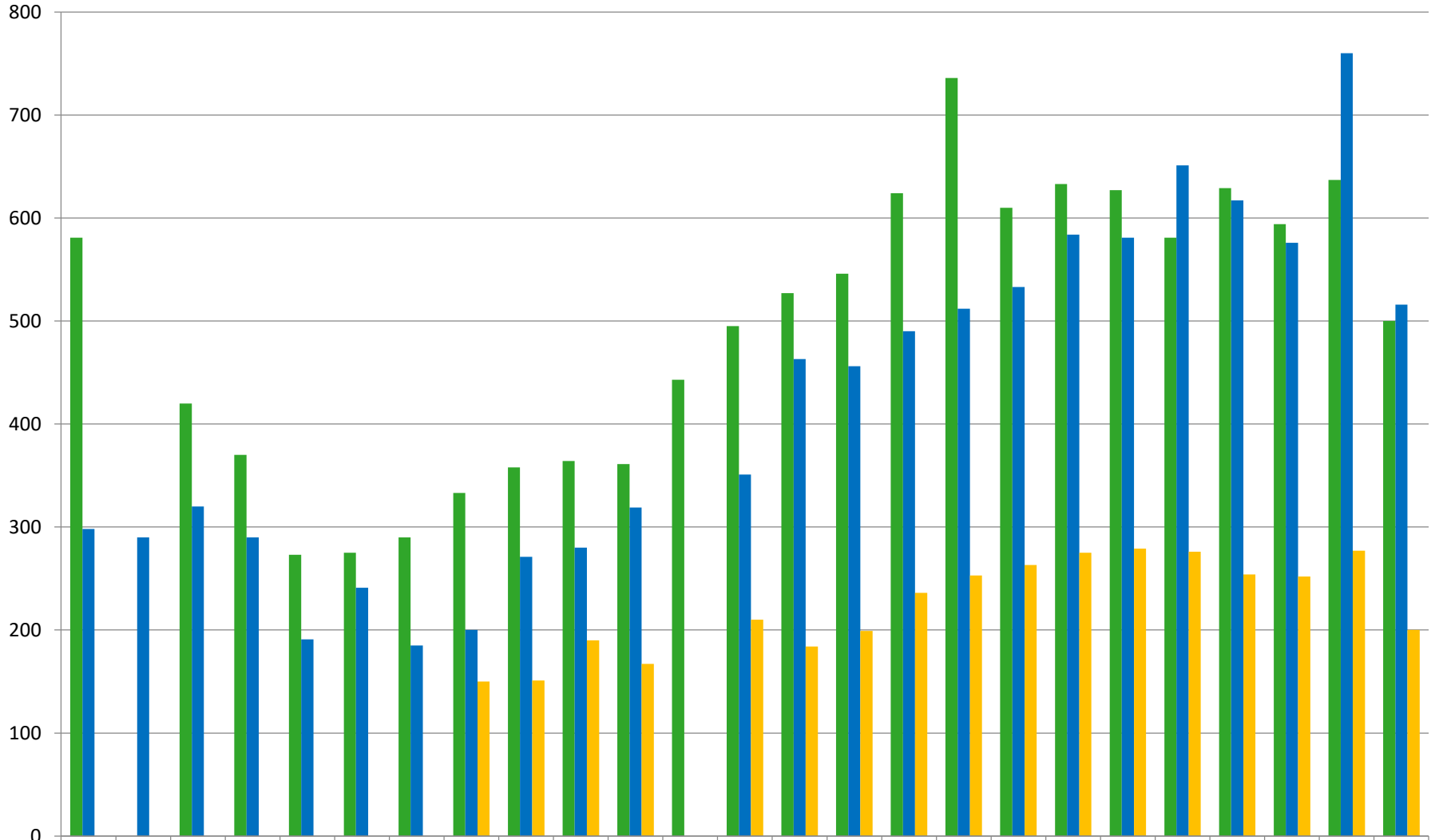


PAUSD MIDDLE SCHOOL BIKE COUNTS (PERCENTAGES) 1985-2021

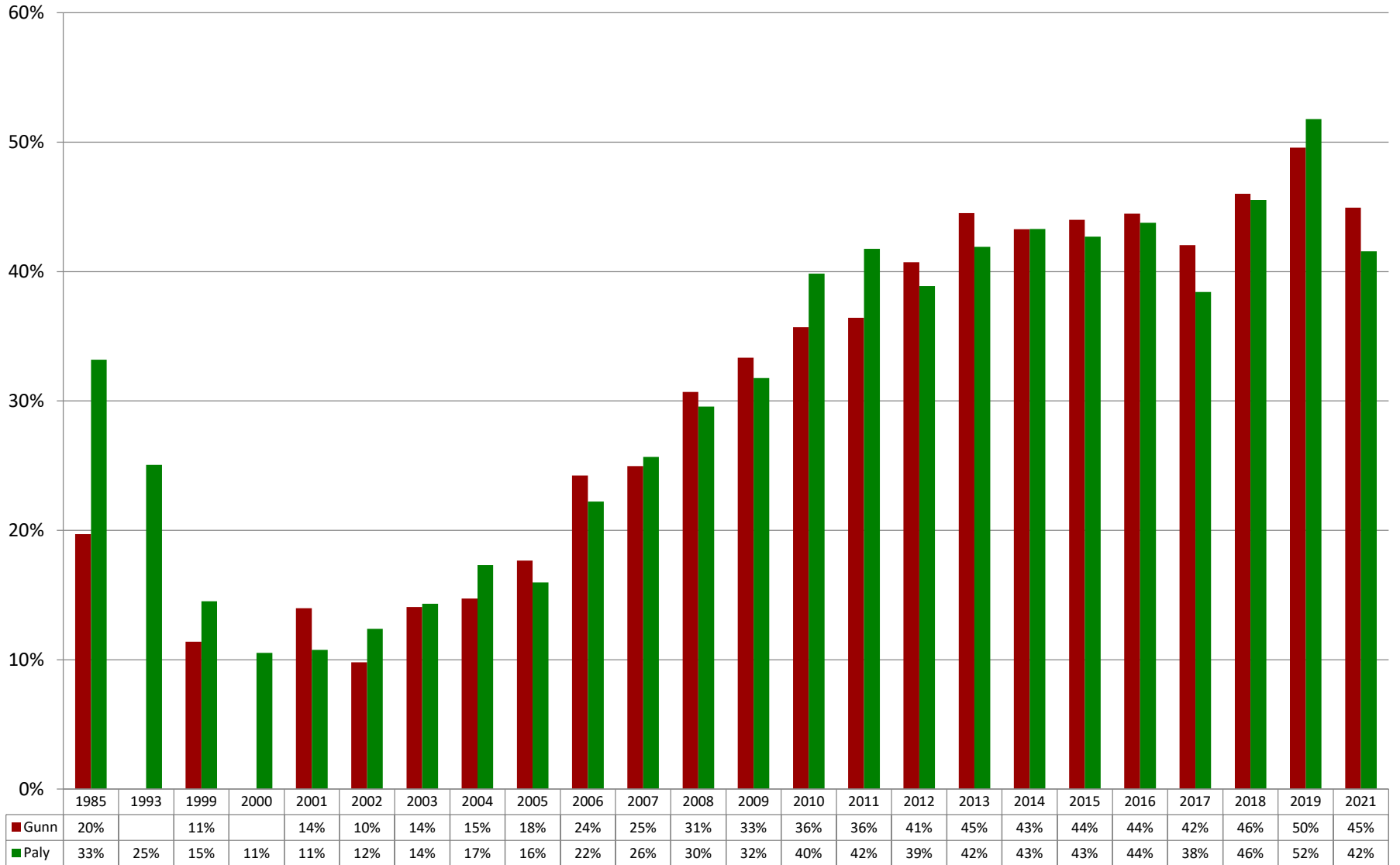


PAUSD MIDDLE SCHOOL BIKE COUNTS (NUMBERS) 1985-2021



	1985	1991	1993	1997	2000	2001	2002	2003	2004	2005	2006	2007	2008	2009	2010	2011	2012	2013	2014	2015	2016	2017	2018	2019	2021
■ Greene	581		420	370	273	275	290	333	358	364	361	443	495	527	546	624	736	610	633	627	581	629	594	637	500
■ JLS	298	290	320	290	191	241	185	200	271	280	319		351	463	456	490	512	533	584	581	651	617	576	760	516
■ Fletcher								150	151	190	167		210	184	199	236	253	263	275	279	276	254	252	277	200

PAUSD HIGH SCHOOL BIKE COUNTS (PERCENTAGES) 1985-2021



PAUSD HIGH SCHOOL BIKE COUNTS (NUMBERS) 1985 - 2021

