

RECYCLED WATER

Safe, reliable, essential for our future.

The City of Palo Alto's Regional Water Quality Control Plant generates approximately one million gallons of high quality recycled water each day. Since 2007, more than one billion gallons of recycled water were reused for landscaping and industrial applications, saving millions of gallons of pristine Sierra snow melt for our region's exceptional drinking water. Recycled water use will increase in importance as California's population expands and climate change poses uncertainties in the state's drinking water supply.

Recycled Water Treatment Process

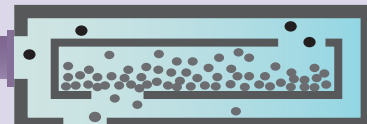
Recycled water is treated wastewater that is cleaned through extensive physical, biological, and chemical processes so that it meets strict California state standards and is safe for reuse. Water quality reports are available at cityofpaloalto.org/recycledwater.

STEP 1 Wastewater is screened and then smaller materials settle into large sedimentation tanks.

SCREENING

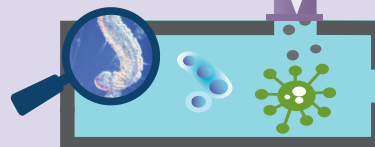


SETTLING



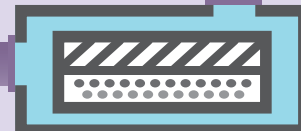
BIOLOGICAL TREATMENT

STEP 2 Trillions of microorganisms consume carbon and ammonia.



STEP 3 Wastewater is filtered to remove fine particles. Chlorine disinfection kills pathogens.

FILTRATION

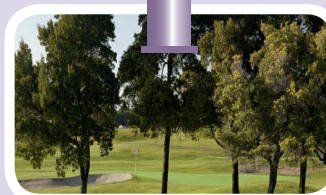


ADDITIONAL
FILTRATION
AND
DISINFECTION

PROJECTS THAT USE RECYCLED WATER



GREER PARK, PALO ALTO



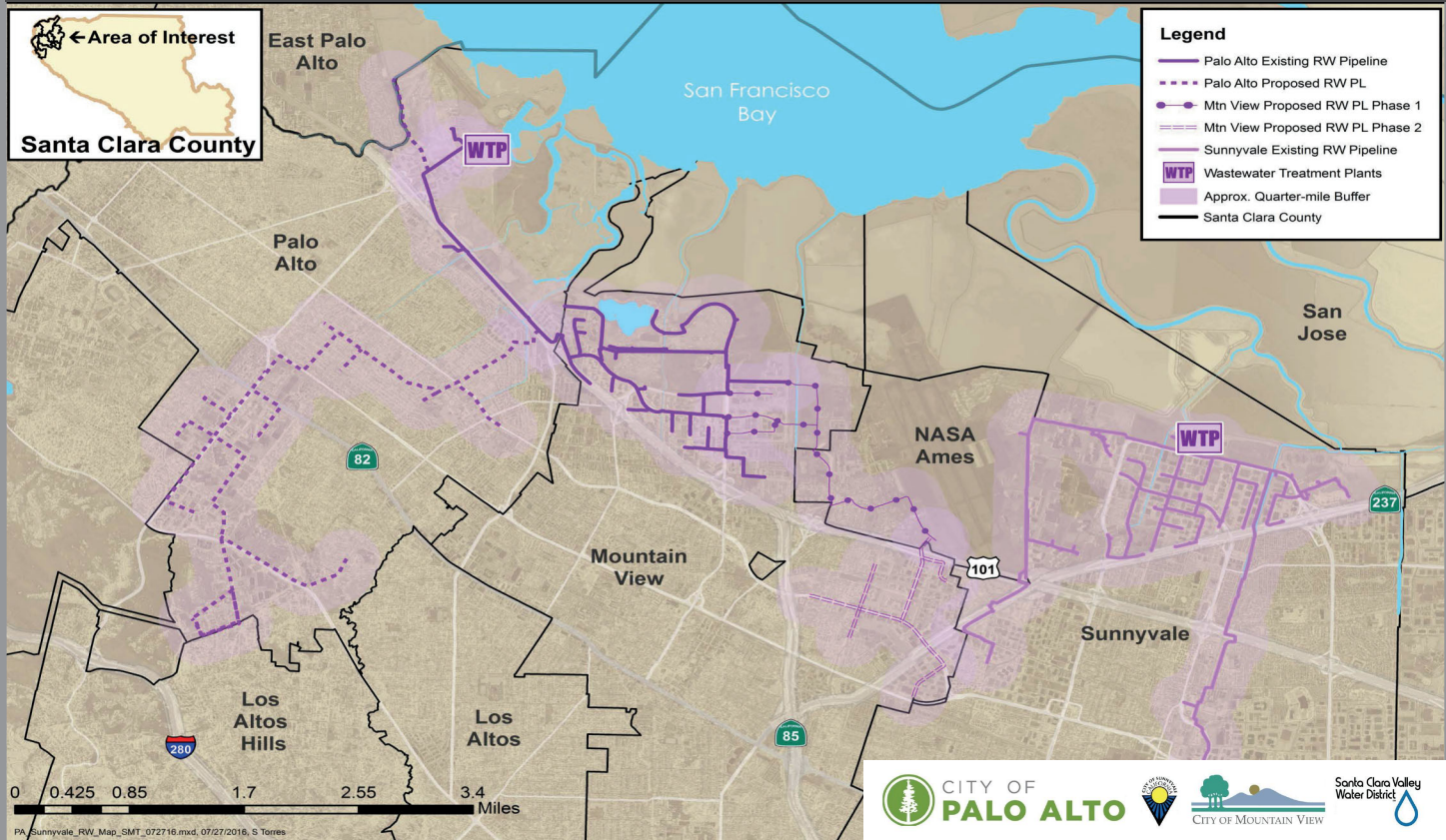
SHORELINE GOLF COURSE, MOUNTAIN VIEW



PALO ALTO GOLF COURSE

Where is RWQCP Recycled Water Distributed?

Recycled Water generated from the RWQCP is distributed in parks and public spaces in northeast areas of Palo Alto and Mountain View. Truck-fill stations are available for recycled water pick up in Palo Alto and Mountain View to permitted users. Hard-piped connections are currently available in Mountain View, and may be available to Palo Alto in the future.



How is Recycled Water Used?

California state code allows recycled water use in:

- Irrigation of parks, playgrounds, schools, residential and commercial landscapes, cemeteries, golf courses, food crops, orchards, vineyards, pastures, plant nurseries and sod farms;
- Flushing toilets and urinals;
- Decorative fountains;
- Boiler feed and cooling towers;
- Street cleaning, dust control, soil compaction;
- Flushing sanitary sewers;
- Impoundments and fish hatcheries.

For more information about the RWQCP's Recycled Water Program, visit: www.cityofpaloalto.com/recycledwater

Email: recycledwater@cityofpaloalto.org

Phone: (650) 329-2122

Or, visit the RWQCP 8am to 4pm, M - F
2501 Embarcadero Way, Palo Alto

Who Can Use Recycled Water?

Residents and businesses located within the Regional Water Quality Control Plant's service area (Palo Alto, Mountain View, Los Altos, East Palo Alto, Stanford University, and Los Altos Hills) can receive a "Recycled Water Use Permit" to use or distribute recycled water. There is a one time \$50 application processing fee and permits are good for one year.

To apply, review the application process at:

www.cityofpaloalto.org/recycledwater,
or call (650) 329-2122.

