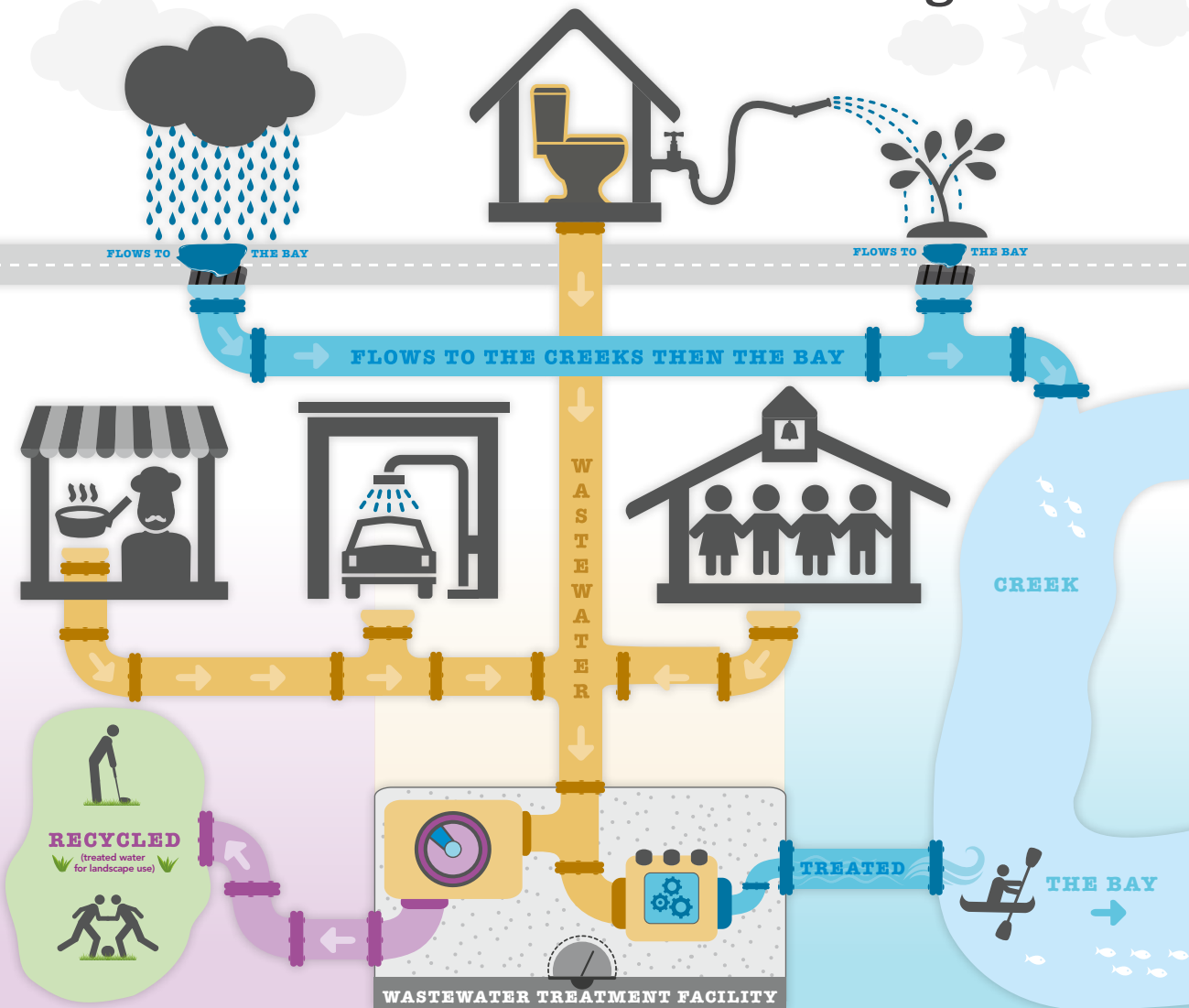


# beyond the drain.

where does our water go?



## Recycled water uses:

- Landscape irrigation (parks, golf courses)
- Construction dust control
- Fountains
- Future dual plumbing

## Wastewater sources:

- Homes: sinks, toilets, showers, laundry
- Businesses: kitchens, cleaning, restrooms
- Industry: manufacturing, cooling towers

## Stormwater sources:

- Water that flows to storm drains including:
  - » Over irrigation
  - » Rainwater
  - » Car washing in the street

**LEARN MORE** at [cleanbay.org](http://cleanbay.org) about the Regional Water Quality Control Plant's efforts to prevent pollution in local creeks and San Francisco Bay.

Check out our school programs, tours, guest speakers, workshops, volunteer opportunities, disposal information and more. Or call **650.329.2122**.



Individuals with disabilities who require accommodations to access City facilities, services or programs, or who would like information on the City's compliance with the Americans with Disabilities Act (ADA) of 1990, may contact the City's ADA Coordinator at (650) 329-2550 (voice) or email [ada@cityofpaloalto.org](mailto:ada@cityofpaloalto.org)

11/15 Printed on 100% post-consumer recycled paper, bleached without chlorine.

