

Rinconada Park

Long Range Plan

City of Palo Alto

Park and Recreation Commission

October 2, 2012



CITY OF
**PALO
ALTO**



VERDE DESIGN
LANDSCAPE ARCHITECTURE
CIVIL ENGINEERING
SPORT PLANNING & DESIGN

Agenda

- Draft Long Range Plan Options Review
- Community Input
- Community Survey
- Next Steps



Draft Long Range Plan Options



Draft LRP #1 - Circulation & Connections



Draft LRP #1 - Materials

OPTION A

OPTION B

OPTION C

CIRCULATION TYPE A Main Pathway

Concrete Paving with Finishes/Colors



Permeable Concrete Paving with Pervious Pavers Under Trees



Asphalt Paving with Concrete Edgeband

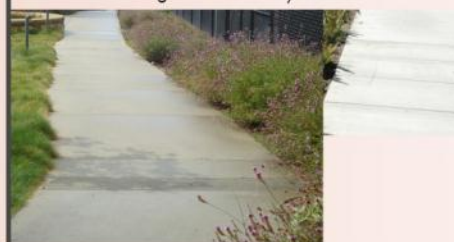


CIRCULATION TYPE B Secondary Pathway and Sidewalks

Pavers



Concrete Paving with Finishes/Colors



Asphalt Paving with Wood Header Edge



CIRCULATION TYPE C Support Pathways

Stabilized Decomposed Granite



Compacted Crushed Stone



Bark Mulch



Draft LRP # 1 – Overview



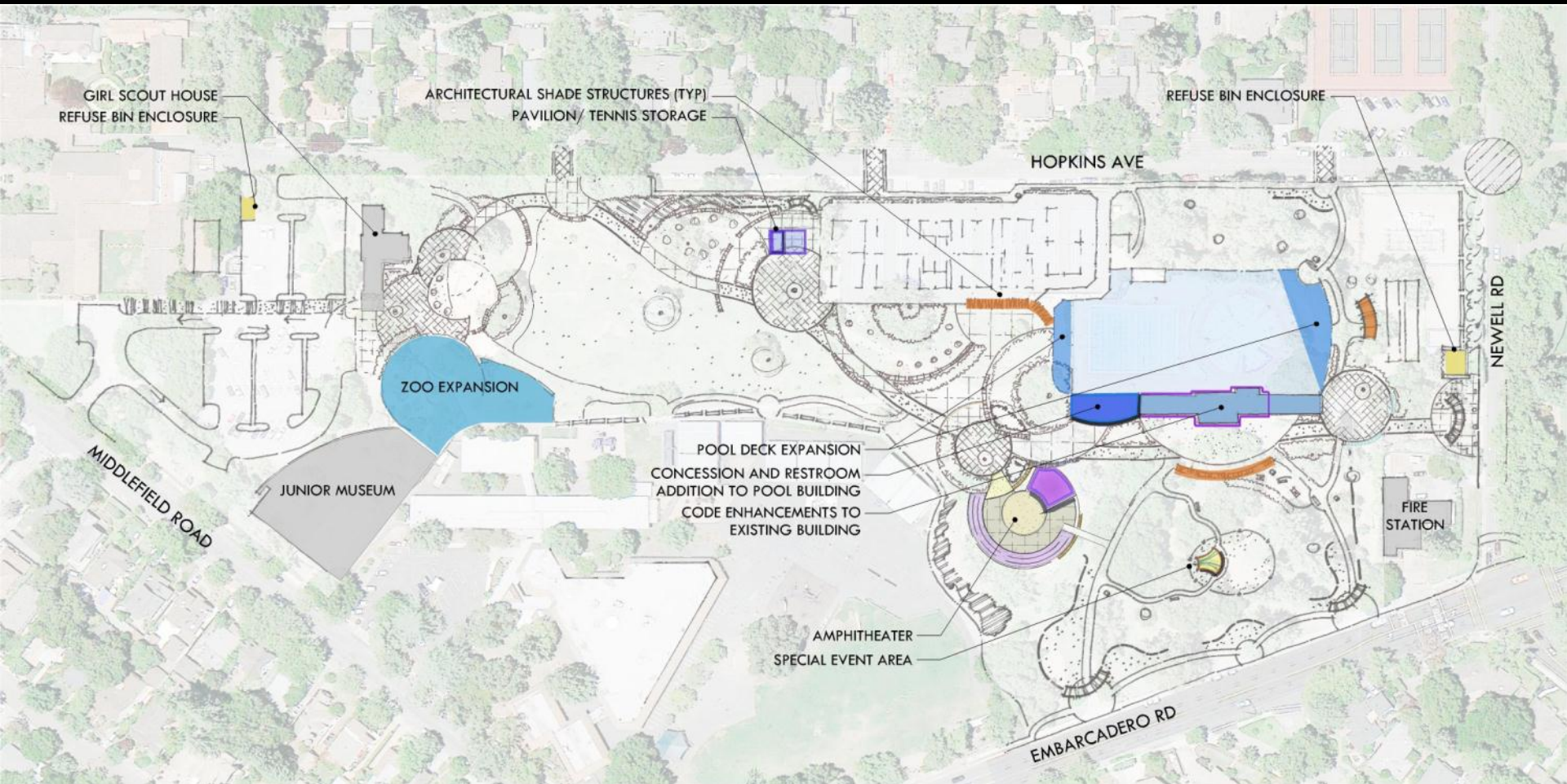
Draft LRP #1 – Entries



Draft LRP #1 – Play/Exercise Areas



Draft LRP #1 – Architecture



Draft LRP #1 – Picnic Areas



Draft LRP #1 – Tennis & Bocce



Draft LRP #1 – Vegetation



Draft LRP – Play Area Materials



TYPES OF PLAY



PRESCRIBED



UNPRESCRIBED



SENSORY

Draft LRP – Site Furnishings



FURNISHINGS
receptacles, benches, lighting

SECONDARY ENTRY
signage and monuments



TYPICAL ENTRY
main pathway

TYPICAL ENTRY
main pathway

Draft LRP – Structures



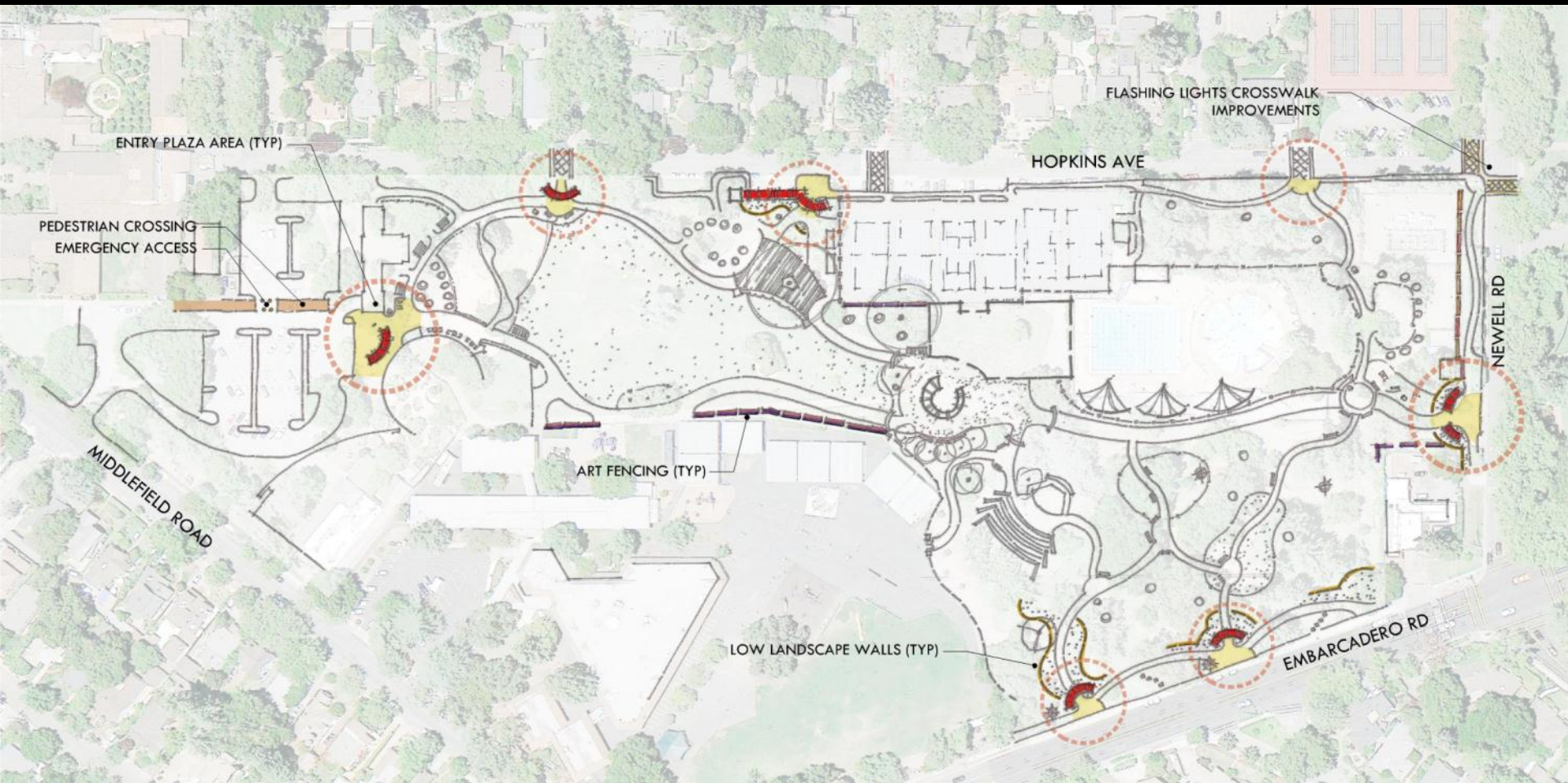
Draft LRP #2 - Circulation & Connections



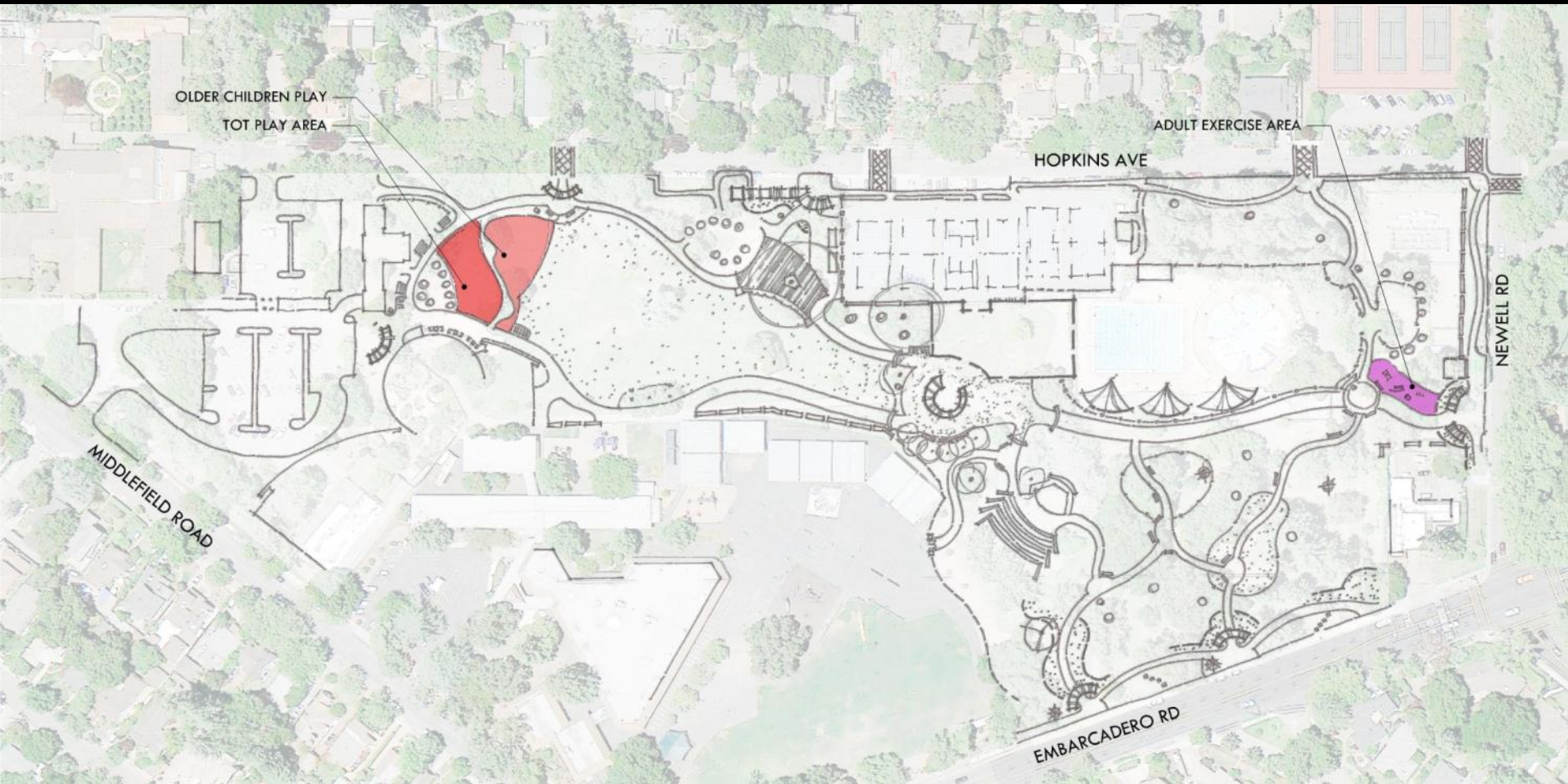
Draft LRP #2 – Overview



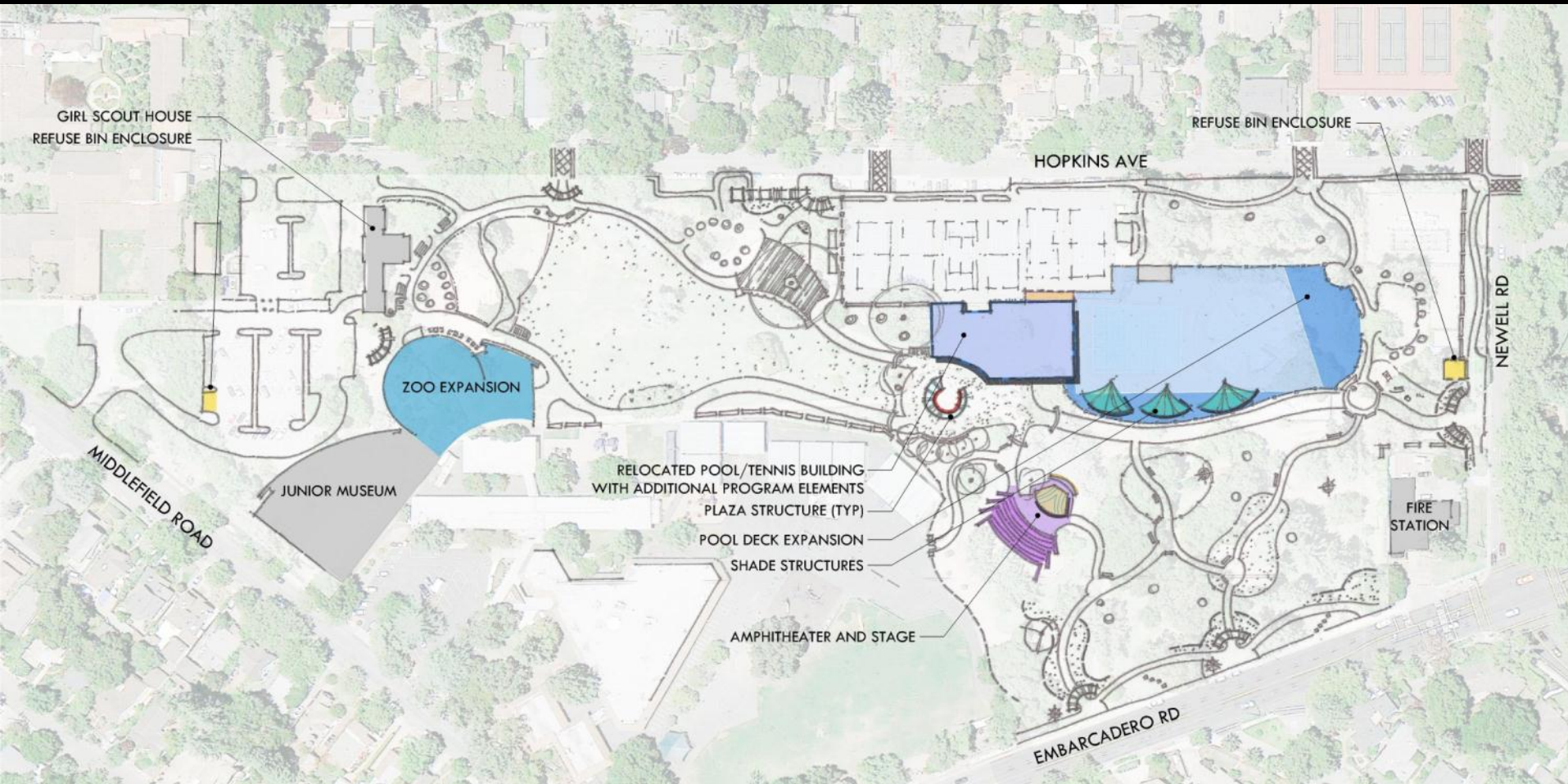
Draft LRP #2 – Entries



Draft LRP #2 – Play Areas



Draft LRP #2 – Architecture



Draft LRP #2 – Architecture

- Amphitheater Options

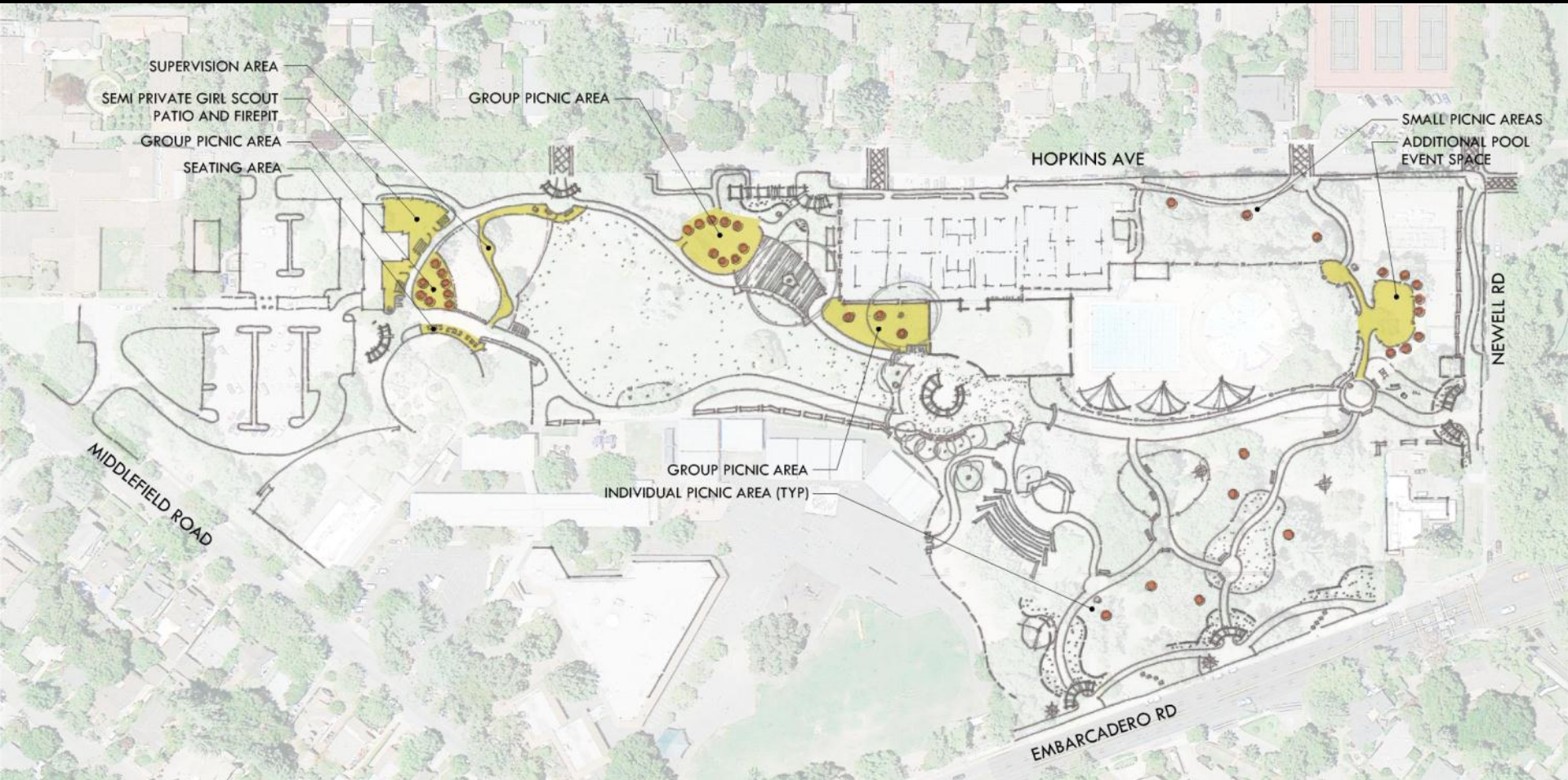


Improvements to existing layout.

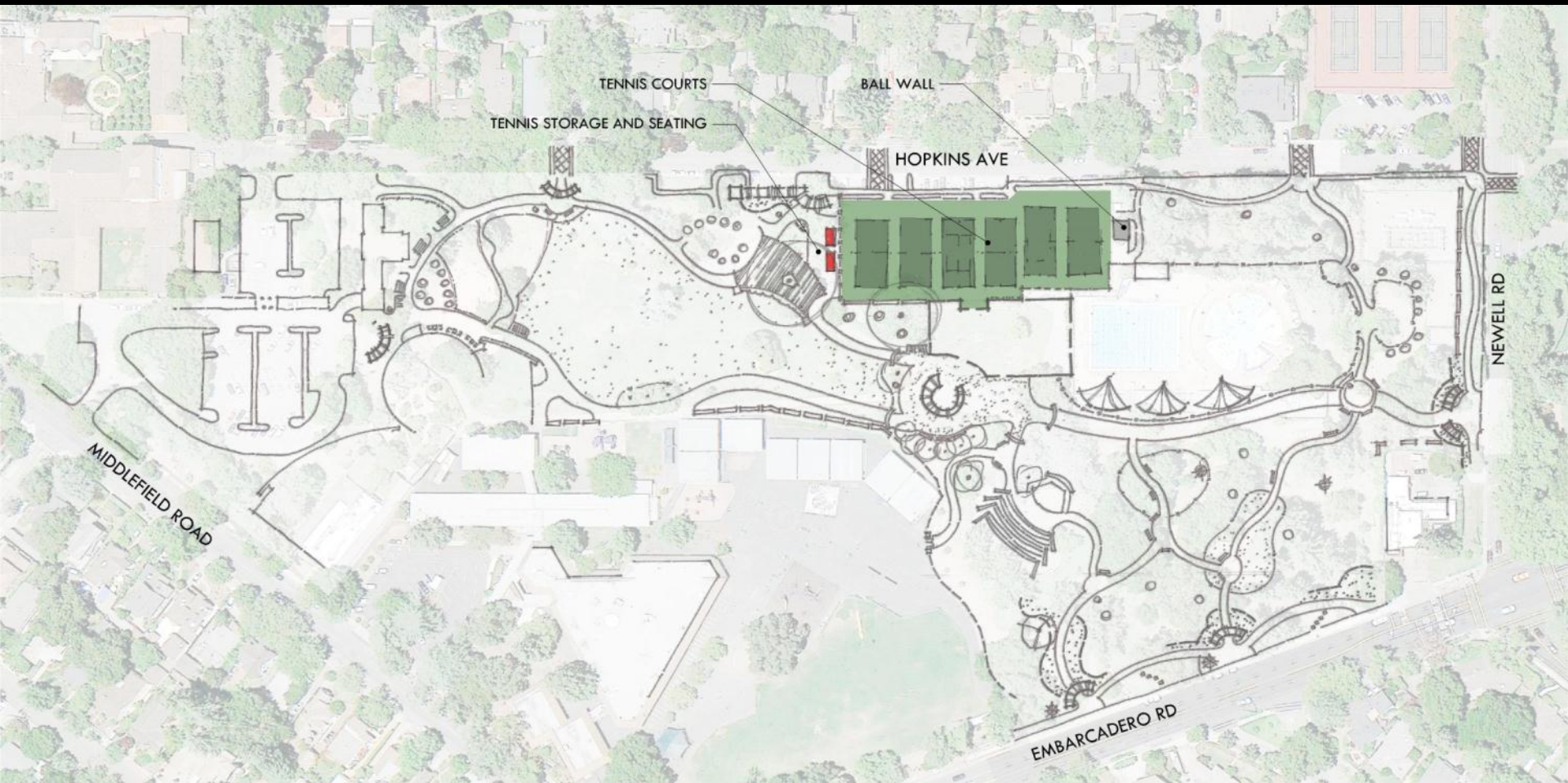


New formalized layout.

Draft LRP #2 – Picnic Areas



Draft LRP #2 – Tennis & Bocce

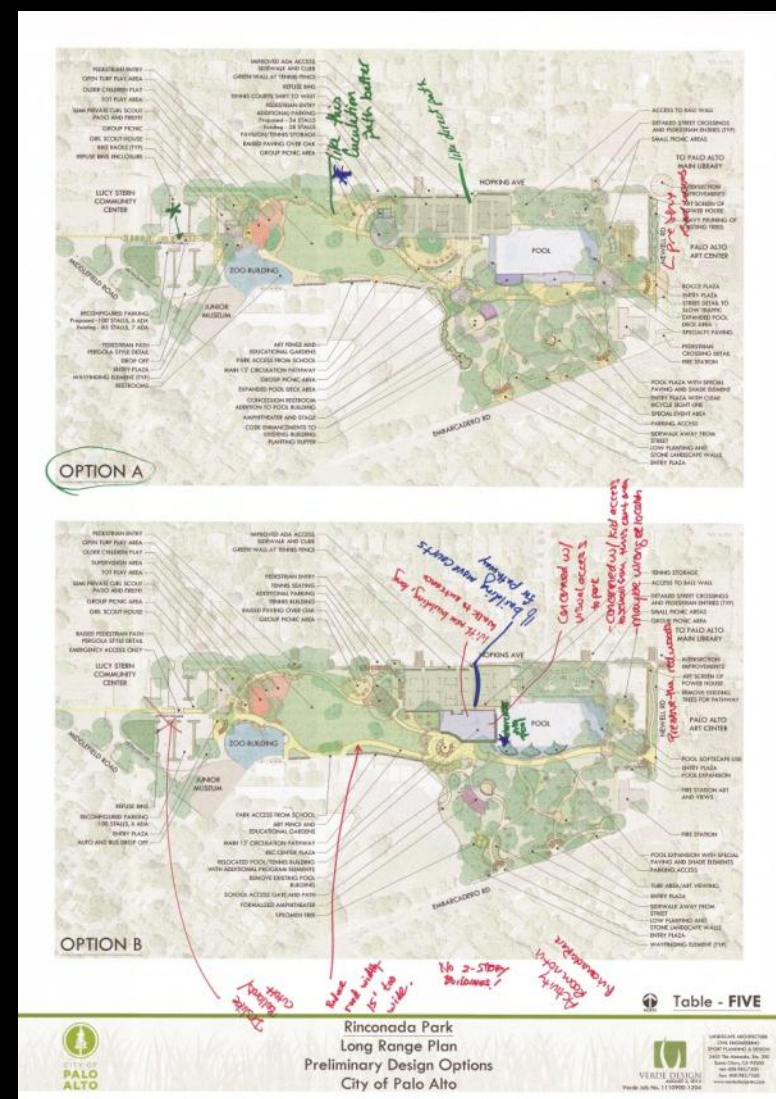


Draft LRP #2 – Vegetation



Draft Long Range Plan Input





Community Input Results

BUILDING OPTIONS

LIKE

2 story main entrance might

PLAY GROUND OPTIONS

AGE APPROPRIATE

0 months - 2 years

2 - 5 years

5 - 12 years

PAVING OPTIONS

OPTION A

OPTION B

OPTION C

Table - ONE

Rinconada Park
Long Range Plan
Preliminary Design Options
City of Palo Alto

BUILDING OPTIONS

PLAY GROUND OPTIONS

AGE APPROPRIATE

0 months - 2 years

2 - 5 years

5 - 12 years

PAVING OPTIONS

OPTION A

OPTION B

OPTION C

Table - THREE

Rinconada Park
Long Range Plan
Preliminary Design Options
City of Palo Alto

Community Input Results

- General Items Common to All Options
 - Parking, crossing and ADA improvements shall be included.
 - Interactive art and sculptural elements.
 - Opportunities for additional drop-offs.
 - Girl scout area and fit pit is positive.
 - School and public use the park for the ¼ mile loop which should be included in the new design.
 - Restrooms are in demand throughout the park.
 - Improved lighting at Magic Forest pathway.
 - Alternative locations for trash collection.



Community Input Results



- General Items Common to All Options - Continued
 - Common architectural language.
 - Exercise equipment in a park course or designated area.
 - Pavilions for public use.
 - Transparent screen or fence at the pool area.

Community Input Results

- 4 out of 6 groups preferred Option A.
- Controversial Items:
 - Pathway between tennis courts.
 - Removing redwoods along Newell to allow for widened pathway and new plantings.
 - New amphitheater with seating and stage.
 - Bocce or volleyball.
 - Pool deck expansion.
 - Concessions.
 - Main circulation pathway layout.
 - Renovation and additions, or new Pool and Tennis Building.
 - Material types for circulation.



Community Survey Results



Online Survey Results and Analysis

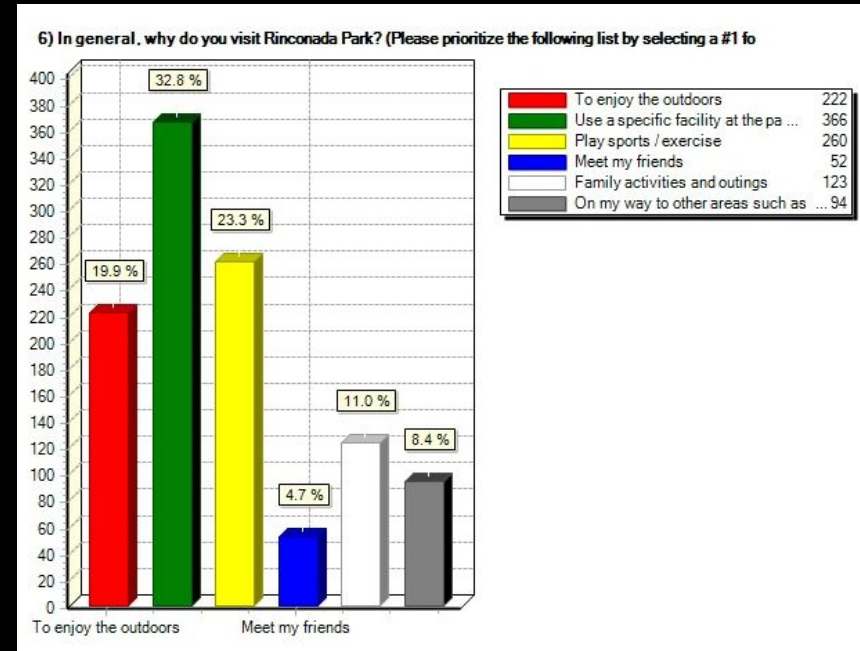


- 222 total responses.
- 67.6% of those who responded have lived in Palo Alto for 11 years or longer.
- 61% live within 1.5 miles of the park.
- 13% live greater than 5 miles from the park.
- 80% are 45 years of age or older.
- 31% are 64 years of age or older.
- 52% believe the over all level of service is outstanding or excellent.
- 30% believe the over all level of service is adequate.
- 60% use the park more than 25 times per year for exercise.
- 52% come to the park 1-10 times per year for concerts, or to participate in cultural events or classes.
- 57% of users arrive by car, though 61% live within 1.5 miles of the park.
- Only one person responded that they arrive by bus.

Online Survey Results and Analysis



- Top 3 reasons people visit the park-
 - Use specific facility
 - Play sports or exercise
 - Enjoy the outdoors
- Park amenities which are used the most-
 - Pool
 - Walking Paths
 - Tennis
 - Playgrounds
 - Community Center
- Park amenities which are most needed-
 - Natural open space
 - Restrooms
 - Passive recreational elements
 - Improved tennis facilities



Online Survey Results and Analysis



- Most important activities to be offered in the park
 - Performances
 - Classes for adults
 - Senior activities
 - Outdoor education
- Of those who would like to incorporate art in the park, 38% would like art in the form of sculpture.
- 66% believe the parking capacity is adequate, the remainder responded that it is poor or additional spaces are needed.
- 59% use the park for picnicking 1-10 times per year.
- 72% stated that group picnic areas shall accommodate 10-20 people. The majority of responses showed that 5 or more pavilions are preferred in the park.
- 62% do not walk their dogs in the park. 24% walk their dogs 26 times or more per year.

Online Survey Results and Analysis



- 50% believe the park should have some sort of concessions.
- 61% agree that the bowl shall be replaced with a true performance space.
- 70% agree that the playgrounds shall be located on the west side of the park.
- 80% use the pool
- 50% use the tennis courts
- 90% walk in the park for pleasure
- 78% the pool fence location is fine at the pool perimeter.
- 50/50 increasing the pool perimeter for additional pool deck space.

Next Steps

- Planning and Trans. Comm.- 10/10
- Architectural Board – 10/18
- City Council – 11/5
- Long Range Plan – 1/10/13



Comments & Questions



Project Schedule



- Project Start Date February 14, 2012
- Site Inventory and Analysis February 15 to May 1, 2012
 - Community Meeting #1 April 10, 2012
 - Park and Recreation Commission April 24, 2012
 - Bicycle Advisory Committee May 1, 2012
 - Stakeholders Meeting May 8, 2012
- Design Development May 1 to June 26, 2012
 - Concepts & Prelim. Environ. Assessment May 22, 2012
 - Community Survey Activated May 30 to June 6, 2012
 - Community Meeting #2 June 5, 2012
 - Park and Recreation Commission June 19, 2012
 - Art Commission Presentation June 21, 2012

Project Schedule



- Draft Long Range Plan July 11 to November 1, 2012
 - Draft Long Range Plans July 12, 2012
 - Stakeholders Meeting July 25, 2012
 - Community Meeting #3 August 2, 2012
 - Park and Recreation Commission October 2, 2012
 - Planning and Transportation Commission October 10, 2012
 - Architectural Review Board Presentation October 18, 2012
 - City Council Presentation November 5, 2012
- Long Range Plan Nov.11 to February 11, 2013
 - Community Meeting #4 January 10, 2013
 - City Council Presentation February 11, 2013
- Final Project Deliverables Feb. 12 to February 25, 2013