



# RINCONADA PARK

## **DRAFT**

### LONG RANGE PLAN

July 2017





## ACKNOWLEDGEMENTS

### CITY OF PALO ALTO

This project was a joint effort of the Community Services and Public Works Departments of the City of Palo Alto. The core team included the following staff members:

Rob de Geus, Director of Community Services  
Kristen O’Kane, Assistant Director of Community Services  
Brad Eggleston, Assistant Director of Public Works  
Daren Anderson, Open Space, Parks & Golf Division Manager  
Peter Jensen, Landscape Architect  
Elizabeth Ames, Senior Engineer

The parks and Recreation Commission advised staff throughout the planning process:

#### Current Members:

Keith Reckdahl  
Anne Warner Cribbs  
Jeff Lamere  
Jeff Greenfield  
Ryan McCauley  
Don McDougall  
David Moss

#### Past Members:

Stacy Ashlund  
Dierdre Crommie  
Jennifer Hetterly  
Abbie Knopper  
Ed Lauing  
Pat Markevitch  
Jim Cowie

### CONSULTANTS

Primary Consultant  
Verde Landscape  
2455 The Alameda # 200, Santa Clara, CA 95050

Report By  
MIG, INC.  
800 Hearst Ave, Berkeley, CA 94710

### PALO ALTO COMMUNITY

Special thanks to the dedicated Palo Alto residents and community members who contributed their time, energy and ideas to this effort, particularly the members of the Stakeholder Advisory Group.



## CHAPTER I: INTRODUCTION

### RINCONADA PARK LONG TERM PLAN OBJECTIVES

- Coordinate and update park resources and amenities to reflect current and future needs of park users.
- Balance the needs of a diversity of users.
- Respond to park usage as it relates to the surrounding neighborhood and community facilities.
- Address safety concerns and make building code updates and infrastructural improvements.
- Establish priority improvements and a phased implementation plan and budget.

In 2012, the City of Palo Alto (the City) launched a long-range planning process for Rinconada Park. The park is home to many of Palo Alto's valued recreational, cultural, and natural resources, including tennis courts, the Junior Museum and Zoo, the City's only public aquatic facility, and a rich canopy of mature redwood and oak trees. The park is adjacent to the Lucie Stern Community Center and fire and power stations. Encompassing 11.8 acres of land, Rinconada Park is centrally located in Palo Alto's Community Center neighborhood and abuts Embarcadero Road. The park is a popular destination for both Palo Alto residents and community members from the surrounding region.

The Rinconada Park Long Range Plan will guide improvements and renovations to Rinconada Park for the next 25 years. The development of the Plan reflects the City's commitment to evolving the parks system to serve a larger and more diverse set of community needs and maintain the high standard of living enjoyed by residents. The Rinconada Park Long Range Plan is consistent with the Palo Alto Parks, Trails, Open Space & Recreation Master Plan principles related to play, health, sustainability, inclusivity, accessibility, flexibility, balance, and nature.

The planning process started in spring of 2012. The Project Team, including the design consultant and City staff, worked closely with community members and stakeholders to understand needs, and establish priorities for Rinconada Park. The Project Team translated the initial public input into three design alternatives, which were then explored by community members and stakeholders. The preferred design, presented in this document, represents a community supported vision for one of Palo Alto's most treasured parks.





Chapter II of this Long Range Plan document includes the Rinconada Park Long Range Plan design with descriptions of planned improvements and a summary of the implementation approach. Chapter III describes the process that shaped the Plan, including site analysis and community engagement. The appendices include a complete cost analysis and phasing.



## CHAPTER II: LONG RANGE PLAN

The technical analysis and public outreach indicated a need for improved circulation and park gateways as well as enhanced play and social spaces, natural areas, and recreational amenities in Rinconada Park. The Long Range Plan includes improvements to circulation, parking, safety, and accessibility; creating a sense of aesthetic consistency throughout the park through clear wayfinding and program identification, site furnishing upgrades, and pathway materials; and preservation and integration of heritage trees and water-wise landscaping. (See Graphic 1.) The Plan divides the park into twelve elements per the overall character or programmed activity of each. These twelve park elements include:

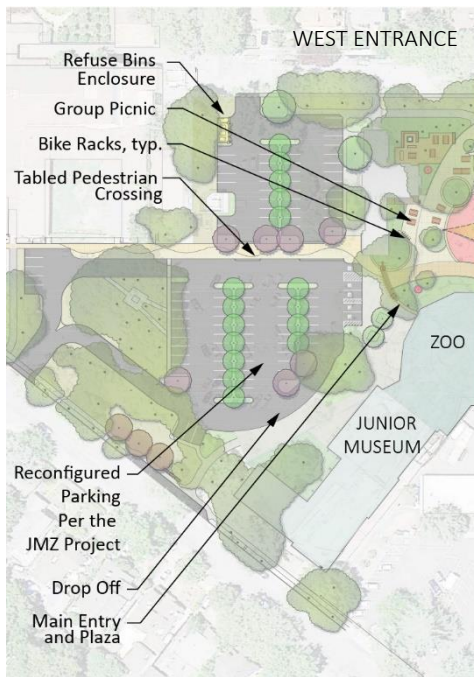
- Pedestrian and Bicycle Circulation
- Gateways
- Play Areas
- Girl Scout House and Group Picnic Area
- Main Lawn
- Tennis Courts
- Pool Area
- Arboretum
- Concrete Bowl
- Magic Forest
- Substation Perimeter
- Hopkins Street Frontage

This chapter describes each element followed by a description of the implementation phases.

### PLAN ELEMENTS

#### PEDESTRIAN AND BICYCLE CIRCULATION

Rinconada Park's internal path system will weave together the many uses and integrate the park into Palo Alto's citywide multimodal transportation network. (See Graphic 2.) Insert Circulation – Pedestrian Graphic The main pathway through Rinconada Park will connect the park entryways at the east and west ends of the park, providing pedestrian and bicycle access to the many amenities in and adjacent to the park. Bike racks located at heavily used entryways and distributed throughout the park will allow users to secure their bicycles while making use of the entire park.



The main pathway will be 15-feet wide and constructed of concrete. It may be textured, colored, or patterned to enhance crossings, gathering spaces, and entryways. Smaller pathways, constructed of decomposed granite, will connect secondary park entrances and recreation and play areas with the main path. Pathways in proximity to existing mature native trees will be constructed of permeable paving to allow for stormwater absorption into the soil.

Sidewalk, crosswalk, and entryway enhancements will improve the visibility and accessibility of the park and better connect Rinconada Park with surrounding neighborhoods.

## GATEWAYS

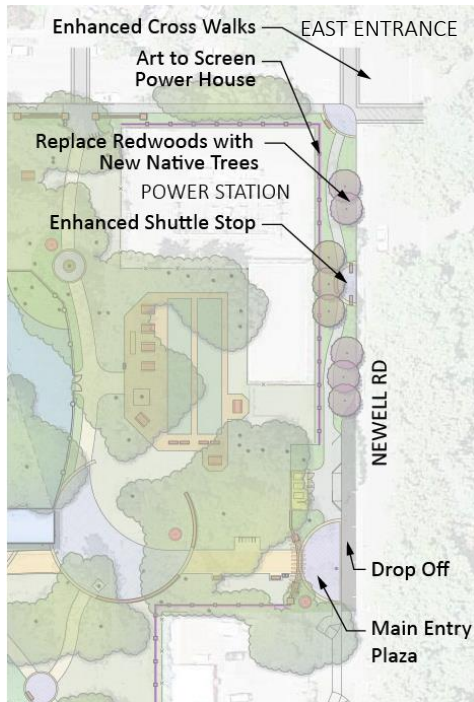
### West Entrance (Rinconada Parking Lot)

The west entrance to Rinconada Park will feature a new plaza that showcases the existing mature trees. Other enhancements may include an architectural structure with a welcome sign, wayfinding signage, and pedestrian scale art work celebrating the Palo Alto Junior Museum and Zoo. Colorful low plantings and shade trees will welcome visitors and allow for visibility in and out of the park.

### East Entrance (Newell)

The main east entrance is an important point of access to the park, linking the Rinconada Library and Art Center. An improved crosswalk at the corner of Hopkins Avenue and Newell Road, a drop-off zone, and a meandering pathway set back from Newell Road will create an inviting gateway that connects the park with the Rinconada Library and the Palo Alto Art Center. To achieve the meandering path the existing row of Redwood trees will be removed, due to high voltage electrical lines above that require the continuous topping of the trees and subsequent declining health. The redwood trees will be replaced with other types of native trees more appropriate for the growing space. An enhanced shuttle stop along this path will serve both Rinconada Park and the Library and Art Center.

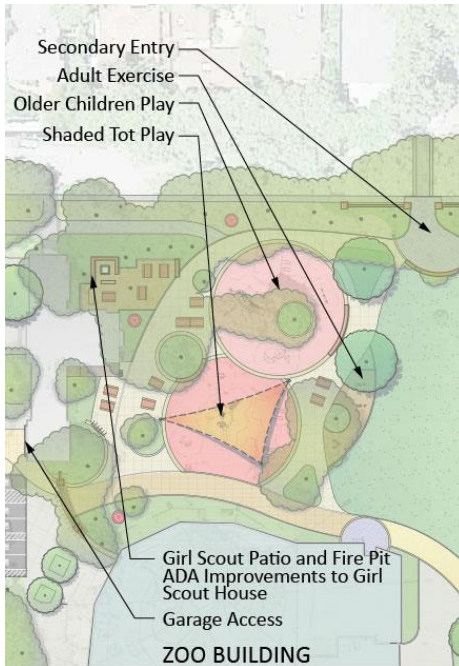
In congruence with the park's west entrance, a welcome sign and wayfinding signage will greet visitors at the entry. Additional lighting will highlight the entrance while enhancing security. A three dumpster refuse bin enclosure with access from Newell Road with solid walls and gates will provide additional service to the park reducing trash pick-up in the park.





### South Entrance (Embarcadero)

Special paving, low landscaped themed stone walls that curve into the park and away from the curb edge, and art elements will announce the park entrances into the Arboretum and improve circulation for the pedestrian and bicyclists accessing the park from the sidewalk



### PLAY AREAS

The Long Range Plan brings the tot lot and older child play equipment together, creating one integrated play environment at the west end of the park. The space will be accessible for children of all ages and abilities. The consolidated play spaces will allow guardians to supervise children of different ages. A low fence will provide secure enclosure and delineate the children's areas. Shade sails over the play equipment will protect children from the direct sun. An adult exercise area features exterior fitness equipment and open rubber surfacing for physical activity. Placed between the playground and main lawn activity area, this exercise space will provide opportunities for people of all generations and abilities. Seating around the play equipment, the nearby Group picnic area, and outdoor exercise equipment directly to the east will establish this as a hub of multigenerational activity. A new restroom located at the west end of the park will be open during park hours of operation and will serve this play area and main group picnic area. The established large trees in and around this space will be preserved.

### GIRL SCOUT HOUSE AND GROUP PICNIC AREA

#### Girl Scout House

The Girl Scout House will be enhanced with ADA upgrades and additional amenities. This element will be shared by the public and Girl Scouts, with Girl Scouts having priority use.

#### Group Picnic Area

New and improved amenities include a fire pit, food preparation table, benches, and picnic area.

### MAIN LAWN

Rinconada Park's existing large lawn area will remain open space and the existing mature trees in the middle of the lawn area should not be replaced when they naturally decline. Due to the limited amount of open space for large group gathering or activities replacement trees for those trees located in the main lawn are not recommended to be replaced in

their current locations, however, further tree planted should be considered in the many planting areas found throughout the park. The lawn area can be accessed from a secondary entry on Hopkins Avenue via the main pathway. The north end of the lawn is boarded by a secondary pathway and includes a large shaded picnic area. Walter Hays Elementary School borders the lawn area and uses the pathway as a running and walking loop. The improved path will include entry nodes with educational elements, artwork, and demonstration gardens adjacent to the pathway.



### TENNIS COURTS (within the park)

The tennis courts are heavily used, valued by community members. The Long Range Plan shifts the courts to the west to allow a pedestrian access route along the east side of the courts. Additional seating and viewing space will be added around the perimeter, which will help to enhance the courts as community space where family, friends, and passersby can watch tournaments or casual play. On the west side, a covered pavilion will be open to the public and used by the Tennis Club as desired for check-in and coordination. To the south of the courts, an informal tennis plaza with shaded seating will provide space for spectators. A permeable area designed to protect the roots of the large heritage oak tree will replace the existing tot lot playground and provide areas of shaded seating and gathering.



## POOL AREA

The pool is a popular and beloved community destination and is used for recreation, fitness, and competitive swimming. Improvements will better integrate the pool into the fabric of Rinconada Park and enhance the pool as a central gathering place. Enhancements include the following:

### Pool Deck Expansion

Enhancements include increasing the pool deck area on the west side of the lap pool to provide a much needed larger deck space and to the east side of the children's pool providing a larger seating area for families to gather. Increased the access to shade in the expanded deck areas will also be incorporated.

### Pool Building and Locker Room Renovations

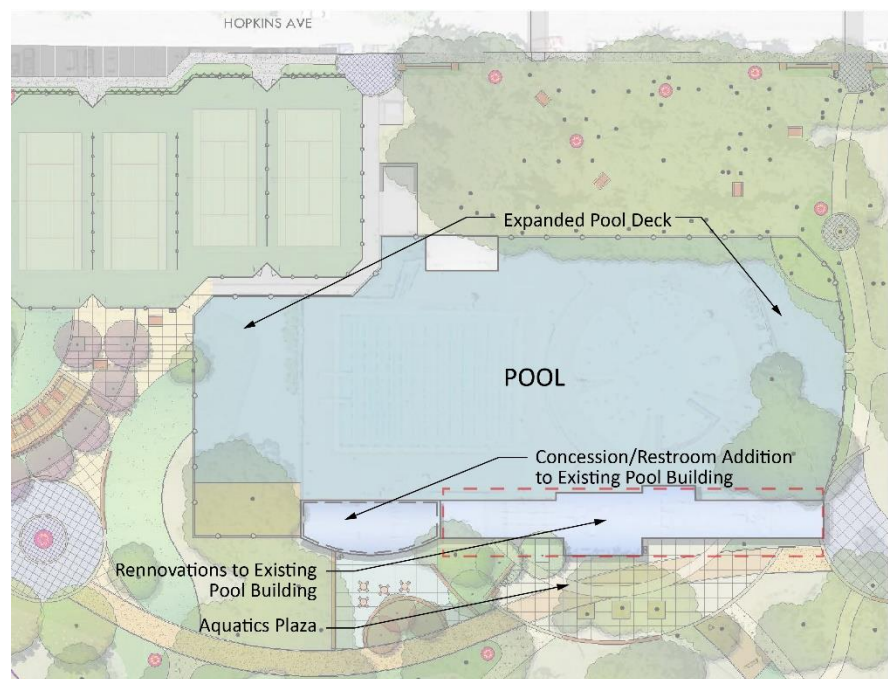
The Long Term Plan recommends the renovation to the existing 4,700 square foot pool structure that includes the locker rooms, office, and pool storage. The renovation will add a 2,300 square foot wing for a new public restroom, activity room and a potential space for concessions. The City may consider concessions operated by a private entity, managed under the same guidelines as the café in the new Mitchell Park Community Center and Library.

### Exterior Pool Plaza Area

On the south side of the pool building, a plaza with thematic paving, shaded seating and art work will provide an additional area for pool related activities, including concessions. The perimeter fencing will be replaced with a more transparent screen that will contribute to the integration of the pool into the surrounding park and enhance the social areas. A direct service corridor from Newell Road to the pool will allow for improved serviceability.

### Long Term Pool Expansion

Space has also been defined in the plan for the possible expansion of the existing lap pool towards the west end of the pool area to accommodate the demand for increased swimming programs and lanes.



### ARBORETUM

The Long Range Plan preserves Rinconada Park's established tree canopy. The Arboretum is home to many of the park's heritage trees and celebrates these special natural features. The Arboretum is the face of Rinconada Park to people traveling on Embarcadero.

Within the Arboretum, existing turf areas will be eliminated under the existing oak trees and replaced with drought tolerant plantings to enhance and accentuate the existing specimen trees. Improved lighting will highlight entry elements as well as select trees. The spaces in the Arboretum are designed for quiet activities.

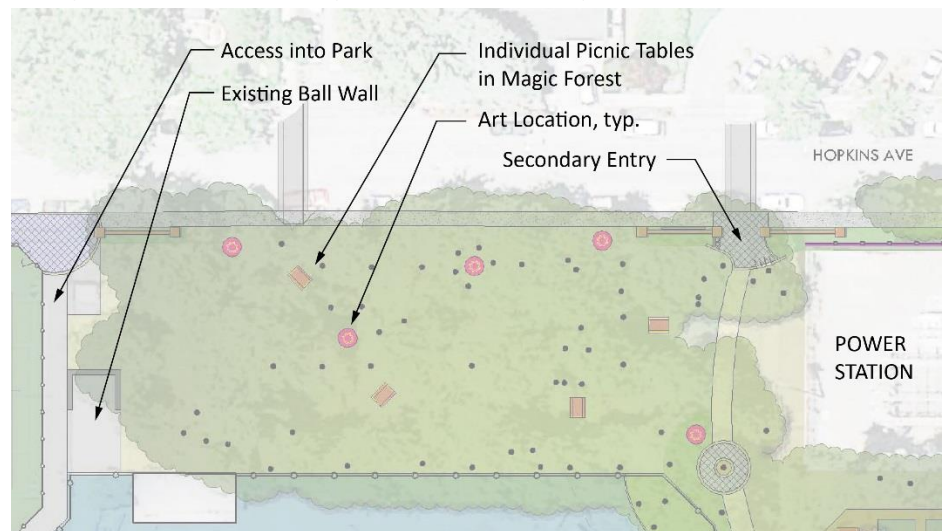


## CONCRETE BOWL

The existing concrete bowl space will be enhanced to continue to support community gatherings and performances. A small stage to replace the existing and related infrastructure including electrical, data, sound and lighting will be installed. The lawn seating area will be maintained in its current configuration. A turf area along the mounded berm will continue to provide overflow 'lawn' seating for additional spectators. A planted screen will buffer the concrete bowl from Walter Hays Elementary School. When the bowl is not in use for performances and events, the City should consider temporary programming such as portable skateboard park installations or outdoor classes.

## MAGIC FOREST

The Magic Forest includes more than 60 mature redwood trees. This unique park element will be preserved with limited improvements. Access to the Magic Forest will be enhanced with a new sidewalk along Hopkins Avenue, a street crossing, and secondary park entries with signage. There will be a lighted access path to the existing ball wall and into the park. The shuffleboard courts will be removed and individual picnic tables will be placed throughout the Magic Forest. A more transparent fence area will provide views to the pool.



## POWER SUBSTATION PERIMETER

This area will include two bocce courts, picnic facilities, and pedestrian scale art elements. The east end of the pool deck will provide access to the small picnic and bocce area.

## HOPKINS STREET FRONTAGE

A new sidewalk in the location of the existing hedge along the tennis courts will complete a contiguous walkway along the edge of the park on Hopkins Avenue. New sidewalks and crosswalks will be aligned with proposed curb cuts along Hopkins Avenue. The improvements will provide ADA access to the tennis courts. A planted “green” screen added to the Hopkins side of the tennis courts will provide an aesthetic street frontage.

## PARKWIDE PLANTINGS

The Long Range Plan generally recommends that turf be limited to areas programmed for active recreation and be removed anywhere it is underutilized and does not support programming. Where turf is removed, the City should consider replacing it with drought tolerant landscaping. Planting buffers and delawned areas should provide visual, seasonal, and textural interest with consideration given to providing pollinator gardens and habitats for birds, bees, and butterflies. The park’s heritage trees should be preserved and a plan developed for successional tree plantings to ensure a diverse urban forest.

## IMPLEMENTATION

The implementation of the Rinconada Long Range Plan will be accomplished over the next 25 years through multiple phases of capital improvement projects.

### PHASING PLAN

#### Short term projects (to be completed by 2022)

- Western edge improvements to the play area and parking lot connection.
- Rinconada parking lot and building frontage along the park’s edge.
- Paving improvements through the center of the park. Improvements will align with the proposed LRP and develop some of the plaza spaces adjacent to the aquatics and tennis court areas. Paving will align with the existing improvements on the western end of park.
- Enhanced park entry on Newell Road with a trash bin area.

- Signage improvements as part of the City's signage improvement plan. Signage will also include wayfinding signage in the park.
- Arboretum Area with improved walkways and entries off of Embarcadero.
- Add restroom to west end of park.

Mid-term projects (to be completed between 2023 and 2030)

- Expand and improve open lawn.
- Remodel and expand pool building and restroom structure.
- Hopkins Street improvements.
- Concrete bowl improvements.
- Magical Forest Improvements.

Long term implementation will include (to be completed after 2030)

- Pool remodel and expansion.
- Shifting of Tennis courts.

## CHAPTER III: DESIGN DEVELOPMENT

An analysis of existing conditions, technical sources, and community input revealed a variety of assets, constraints, and opportunities for Rinconada Park. The design team evaluated traffic and parking studies and made site visits to the park to observe the existing conditions and park users. Input was gathered from community members, commissioners, committees, and stakeholders. The following section summarizes the existing conditions, community input, and analysis.

### CONTEXT

Established in 1922, Rinconada Park is Palo Alto's second oldest park. The most recent renovation was an irrigation upgrade in 1999. Since 1990, only the children's play equipment has been upgraded and the tennis courts resurfaced.

Now, in 2017, Palo Alto looks much different. The City has been at the epicenter of the growth and prosperity experienced by the Silicon Valley region in recent years. Along with many opportunities, the growth has also brought increased housing demand, traffic congestion, and a changing population. During this period, California also experienced record setting drought and mandated water use restrictions.

The City of Palo Alto is dedicated to preserving a high quality of life for its residents while also growing sustainably, addressing climate change, supporting healthy ecosystems, and providing recreational and cultural opportunities for a diverse community. Today, Rinconada Park is loved and highly utilized by the community, but it needs updates and improvements to support the changing community and environment and to align with current park design standards and best practices.

### EXISTING USER GROUPS

Rinconada Park is a hub of activity in Palo Alto and is used by a variety of community members with a range of interests and needs. Palo Alto residents and community members from neighboring cities visit Rinconada Park for its unique amenities and recreational opportunities. Community members picnic, play, exercise, and socialize. The park is home to the Rinconada Masters Swim Team, Palo Alto Swim Club, and the Palo Alto Tennis Club. The park is also used by the Girl Scouts and Walter Hays Elementary School students.



## COMMUNITY INPUT

The Rinconada Long Range Plan was developed in collaboration with community members and stakeholders. Engagement activities included stakeholder meetings, community meetings, a community survey, and City Commission meetings.

Stakeholder Advisory Committee members included representatives from six neighborhood associations, Palo Alto Swim Club, Master Swim Club, lap swimmers, Tennis Players Association, Girls Scout House, Lucie Stern Community Center, Junior Museum & Zoo, Children's Library, Children's Theater, Friends of the Art Center, Friends of the Palo Alto Parks, Canopy, Palo Alto Bicycle Advisory Committee, and Walter Hayes Elementary School.

The design team translated initial community input and ideas into three design alternatives. (See Appendix C.) The design alternatives were presented to community members and stakeholders who provided feedback on the designs, identifying their preferred improvements. Community feedback and insights are incorporated into the following Existing Conditions and Site Analysis section.



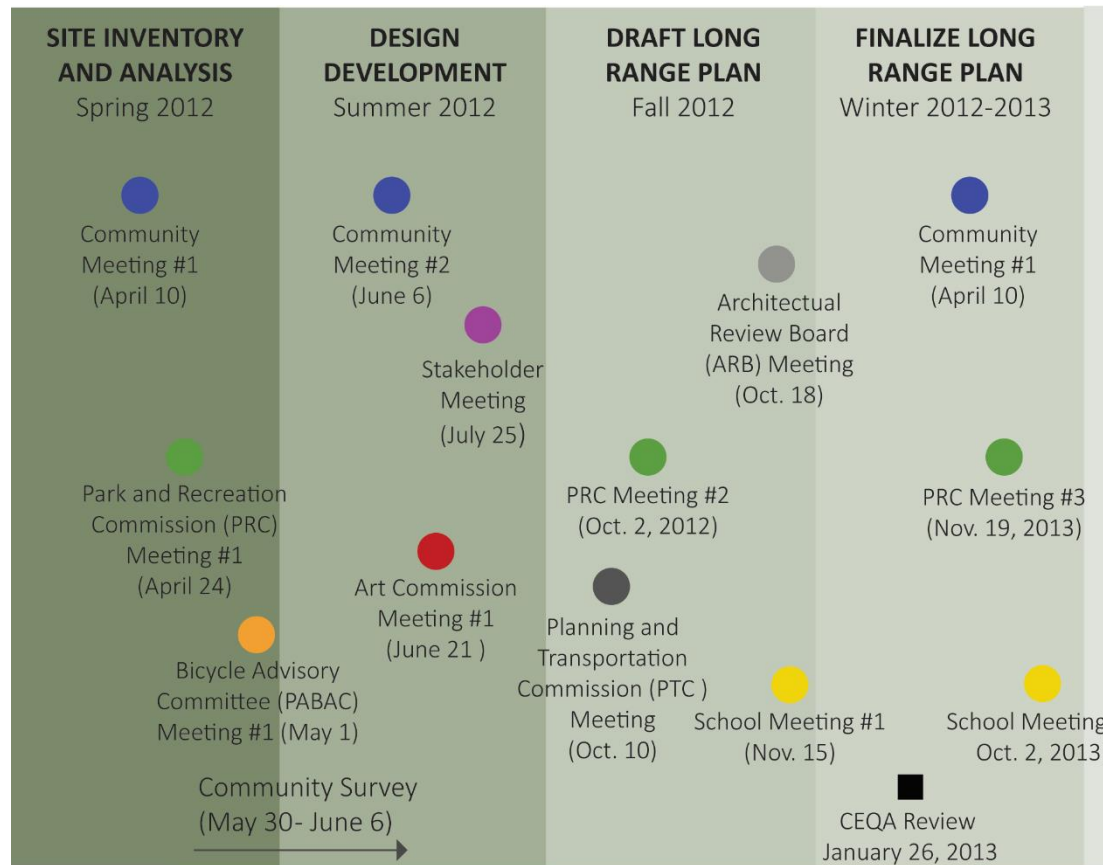
## RINCONADA PARK CONSTRAINTS AND OPPORTUNITIES

### Constraints

- Interface with adjacent uses
- Existing site layout
- Historical uses
- Existing trees
- Parking

### Opportunities

- Increasing connectivity
- Installing educational and interpretive elements
- Expanding park programs
- Preserving tree canopy
- Incorporating artwork
- Supporting city-wide sustainability goals



## EXISTING CONDITIONS AND SITE ANALYSIS

Public input and an evaluation of existing conditions in Rinconada Park shaped the Long Term Plan recommendations. The analysis surfaced constraints as well as significant opportunities. Following is a discussion of the challenges and opportunities related to each park element.

### PARKWIDE

#### Plantings

Trees are one of the major assets of the park, particularly the Magic Forest and the Arboretum trees along Embarcadero Road. Different types of uses that occur under trees, and the materials that accompany those uses should be carefully identified as longevity and health of the trees should take priority. Tree groupings help define spaces in the park. A reforestation and replacement plan should be developed and implemented, as well as a possible tree identification or education program.

#### Safety and Visibility

Street crossings from park entrances should be improvement for safety and ADA accessibility. Throughout the park, lighting is minimal and certain areas feel more secluded and less visible. Park safety could be improved through site lighting, emergency call stations, and defined fire and emergency access routes. Site lines, the sense of safety in the park, and police input should be considered.

### **Maintenance**

The current maintenance and delivery vehicle routes conflict with users and park features. There is damage to softscape edges and planting areas from service vehicles needing to make tight turns. The asphalt is damaged along the edges of pathways. concrete edge bands would help protect asphalt from damage. Throughout the park turf areas could be reduced to save water and maintenance.

Trash management should be improved. Dumpster enclosures and their locations need to be reconsidered and updated. Service locations and routes need to be separated from park use. Trash and recycling bins should be placed throughout the park in high use locations such as picnic areas. Composting options should be considered. Trash receptacles should match the style of other site furnishings and be accessible.

## **PEDESTRIAN AND BICYCLE CIRCULATION**

### **Internal**

Rinconada Park's main pedestrian path and vehicular path are combined, which causes conflicts and inefficiencies. The condition of the existing pathways is poor. Some pathways are not dedicated or are poorly defined. Pathways must avoid trees and pavement under mature trees should be permeable. Dedicated vehicular routes, including adequate vehicular load calculations, with wayfinding signage should be considered.

### **External**

The park's relationship and connection to adjacent uses should be improved. The location of entries and crosswalks should be reconsidered and improved. Visual connections into the park from adjacent roadways and neighborhoods are important, and should be considered when locating or relocating program elements. Off-site directional signage to the park should be provided.

## **GATEWAYS**

### West Entrance

The western entry and parking areas are disorganized and inefficient, with poor connectivity to adjacent areas. There are no dedicated service routes, signage, or wayfinding. There are more trash and recycling bins than necessary and they are not placed strategically, which creates visual clutter and degrades one of the park's main entryways. The site furnishings in this area are antiquated and should be upgraded to create a unifying theme.

## PLAY AREAS

### Western Playground

The western playground equipment, which serves older children (5-12 years old), should be replaced with more dynamic equipment, as recommended by the Citywide Play Equipment Replacement Plan. Despite the play area's proximity to the Children's Museum and Zoo, the uses are disconnected. There are great opportunities for improving circulation and integrating the uses into a youth-focused, dynamic play environment.

### Northern Playground Tot Lot

The northern playground tot lot area is located toward the center of the park and isolated from the western playground area. The separation creates a challenge for families with younger and older children. The tot lot should be moved closer to the older children playground on the southwest side of the park. The same observations related to the condition of the structures and site furnishings of the western playground apply to the tot lot. Additionally, the sand surfacing in the tot lot limits accessibility. Alternative surfacing options should be explored to improve accessibility and safety.

There is a large oak tree in this area that is an incredible asset and should be protected. The playground and associated uses should be moved from under the tree as recommended by the City Arborist. If the area under the tree remains paved, new paving should be permeable or include a raised platform, which could serve as a seating area.

### Girl Scout House

The group picnic area, next to the Girl Scout House, is heavily used and in need of renovation. The Girl Scout House is disconnected from the play area. The play area and Girl Scout House should be more cohesive. Privacy and separation from the neighbors is needed.



## MAIN LAWN

The western lawn area is located at the west end of the park between the two playgrounds and abuts Walter Hays Elementary School. This area is mostly un-programmed open space with perimeter pathways. The turf edge bordering the school is aesthetically sterile and institutional and underutilized. The lawn supports large events, but lacks amenities and utilities. There are several large trees as well as others which were recently planted. These trees should be reviewed as to their location in the lawn and whether they classify as heritage trees. If specific trees were to be removed it would offer the opportunity for a larger unobstructed open space and enhanced site lines.

The Hopkins Avenue side of the western lawn includes numerous large trees that should be protected. This area of turf and irrigated landscaping could be reduced and replaced with a group picnic area and drought tolerant, low maintenance plantings. Along Hopkins Avenue, the park edges are not well defined and pathways are being impacted by tree roots. There is a need for designated access and ADA improvements. This edge of the park would also benefit from screening to buffer adjacent neighbors from park elements such as trash.

## TENNIS COURTS AND POOL AREA

The tennis courts and pool area is a heavily used active area of Rinconada Park that shares parking and circulation. Circulation, parking, and usage should all be improved around the tennis courts and pool. Parking improvements are required along Hopkins Avenue to address circulation and lack of accessibility. Connections to parking, including sidewalks, signage, ramps, and curbs are limited.

There is an informal social path on the northeast side of the tennis courts that cuts through the Magic Forest. This pathway should be widened to allow for a variety of users or users should be directed to alternate access routes. Currently there is conflict between maintenance, deliveries, and pedestrian circulation, which should be addressed with designated pathways and wayfinding. Service and utility use areas and pathways should be separated from park use areas and pathways.

### Tennis Courts

There are opportunities to improve the aesthetics and directional wayfinding and program element identification. The hedge along Hopkins Ave could be reduced or removed, which would provide a wider and more accessible sidewalk along the existing parking. The parking and tennis courts are at different elevations, which creates access challenges. The tennis court perimeter is showing age and the fencing is too short.

The tennis users have requested a designated storage or small office building.

#### Pool Area

The observations related to circulation and parking above also apply to the pool. The pool area is not visually integrated into the park and feels isolated. The pool building could use renovations to align with usage and code requirements. The exterior of the building offers opportunities such as murals, art, or integrated wayfinding, tying it into the park.

### ARBORETUM

The Arboretum area is located at the southeast side of the park along Embarcadero Road. The mature trees should be preserved and will require protection from overwatering and root damage. Pathways through this area should meander to avoid the trees. There is opportunity to use this space as a passive recreation area and/or a secluded area for weddings or other events with a small pavilion nestled in the trees. The edge along Embarcadero Road lacks defined entrances and site elements. Pedestrian and bicycling safety should be improved along the park's border with Embarcadero Road.

### CONCRETE BOWL

The concrete bowl area is located towards the center of the park at the northwest corner of the Arboretum. This area is underutilized due to lack of features such as utilities and a well-defined stage. The adjoining restroom building is outdated and is visually unidentifiable. This building could be relocated to improve site lines as well as park uses.

### MAGIC FOREST

The Magic Forest area is at the northeast edge of the park between the Aquatic Center and Hopkins Avenue. The existing forest of redwood trees is a significant park asset and should be preserved and programmed for passive recreation and relaxation. There are over 60 mature redwoods with shallow rooting structure, which will limit the improvements in this area. The existing shuffle board and horseshoe pits are in bad condition and are rarely used. An established beehive exists in the tree base near the existing shuffle board which should be protected, per a professional bee keeper. This area is bordered by the electric substation at the east with overhead power lines.

## RESTROOM

Currently there is one restroom facility located centrally in the park. The Restroom structure dates to the 1950's and is in need of renovations. The current restroom configuration does not meet ADA standards. A small informational booth where park rangers once operated is now used as a storage closet. Due to the age of the building and required renovations to bring it up to code, it's recommended for removal. The removal of the building will open sight lines from the Newell end of the park to Lucie Stern that will create a better link between city facilities.

## REGULATORY CONSIDERATIONS

The City of Palo Alto Municipal code protects the citizens and their environment. Municipal Code regulates certain park functions and activities, including:

- Hours of use
- Approved activities and prohibited activities
- Activities and events requiring permits – such as group picnics and performances
- Pet use requirements in park
- Protection of flora and fauna
- Amplified sound requirements
- Markings and graffiti
- Picnic area use restrictions

The improvements included in the Rinconada Long Range Plan are consistent with Policy C-26 of the Community Services element of the Comprehensive Plan that encourages maintaining park facilities as safe and healthy community assets, and Policy C-22 that encourages new community facilities to have flexible functions to ensure adaptability to the changing needs of the community. The Plan is also consistent with the Palo Alto Bicycle and Pedestrian Transportation Plan, Urban Forest Master Plan, Palo Alto Parks, Trails, Natural Open Space & Recreation Master Plan.

The Rinconada Park Long Range planning process included a Historic Resources Evaluation and an Initial Study of Environmental Impacts. (See Appendices D and E.