

# Rinconada Park Long Range Plan

City of Palo Alto

Community Meeting

September 12, 2013



CITY OF  
**PALO  
ALTO**



VERDE DESIGN

LANDSCAPE ARCHITECTURE  
CIVIL ENGINEERING  
SPORT PLANNING & DESIGN

# Agenda



- Introductions
- Goals and Objectives
- Draft Long Range Plan Input
- Final Draft Long Range Plan Review
- Community Input
- Next Steps





# Existing Conditions





# Long Range Plan – Why?



## Goal & Objectives

- Create better connection and awareness to all the community facilities that exists around and within the park.
- Coordination and update of Park resources and amenities to reflect current and future needs of park users and guests.
- Respond to park usage as it relates to surrounding uses and neighborhood.
- Building Code and infrastructural improvements
- Coordination of user group objectives





# Draft LRP # 1 – Overview



## Design Elements

- Parking Lot @ Lucie Stern connected as one lot
- Main walkway takes route along Hopkins side
- Formalized amphitheater
- Picnic/tennis pavilion
- Large central group picnic area
- Renovation of existing pool building structure at current location
- Pathway divide tennis courts
- Central pavilion @ Arboretum area



# Draft LRP #2 – Overview



## Design Elements

- Parking Lot @ Lucie Stern divide into two separate lots
- Main walkway takes route along school side of park
- Renovate existing amphitheater
- Seating deck under oak tree adjacent to tennis courts
- New pool/community building
- Group picnic area adjacent to power station
- Reconfigured sidewalk along Newell Road.
- New path layout at the Arboretum

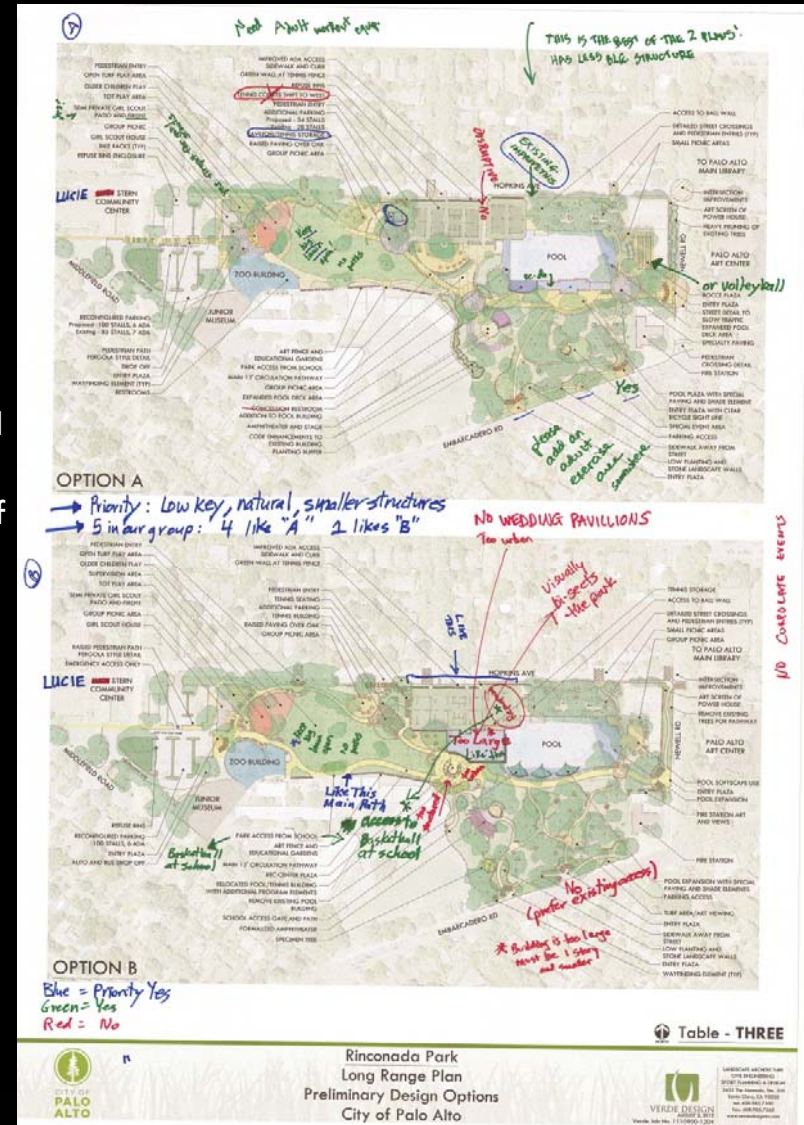


# Community Input Results



## • Circulation

- A main east to west 15' wide arterial pathway for circulation and maintenance
- Widths of pathways shall be studied and be based upon their function.
- Pathway materials and locations should consider tree root issues and protection.
- Strong entry statements at the east and west ends of the park were favored.
- Main entries with landscape walls, signage, and overhead structures which may include artwork
- Secondary entries and gather spaces will have signage of smaller scale, and landscape walls and plantings which pronounce the entry and arrival into the park
- Pavers are the preferred material under the oak trees.
- Material Types for Circulation:
  - Type A – Major Pathway – concrete was the favored paving type.
  - Type B – Secondary Pathways and Sidewalks – concrete was the favored paving type.
  - Type C – Supporting Pathways - decomposed granite or concrete was the favored paving type.



# Community Input Results



- **Parking**
  - Additional parking, crossings, and ADA access along Hopkins Ave.
  - Accessibility and 'parking' areas should be provided for picnic area users.
  - Parking lot to have a drive through with a safe tabled pedestrian crossing.
  - Opportunities for additional drop offs around the park.
- **Playgrounds**
  - Located the playgrounds together at the west end of the park.
  - Shade should be provided for seating, picnic and playground areas.
- **Turf and Open Space**
  - The large turf area should be preserved.
  - Reduce lawn in non activity areas, and under mature trees.
  - Use drought tolerant accent plantings at park entry points gathering spaces.
  - Preserve running loop pathway around large turf area.
- **Buildings & Pool**
  - More restrooms are needed at the east end of the park.
  - The new Jr. Museum Building shall include a restroom.
  - Renovations to the existing pool building was favored.

Rinconada Park Long Range Plan  
City of Palo Alto – Community Meeting

9.12.13



# Community Input Results



- **Buildings & Pool (continued)**

- The existing pool facilities and building need renovation to meet the needs.
- Additional deck space and shade elements to the pool area.
- Bring back concession stand in the park.
- A covered picnic pavilion for group use which contains storage for tennis.
- All architectural elements in the park should have a common aesthetic.
- Maintain/increase transparency of the pool fencing to create views and link the pool better to the park.

- **Program Elements**

- Bike parking shall be located throughout the park.
- Include a semi-private Girl Scout area and fire pit.
- Add new activities to the park: bocce or sand volleyball.
- Maintain access to the school from the north and east.
- Improved site lighting shall be provided throughout the park.



# Parks & Rec. Commission Input



- **Circulation & Maintenance**
  - Pathway materials and locations should consider protecting existing trees.
  - Refuse sites to be located on the periphery of the park at the east and west ends to reduce maintenance vehicles in the park.
  - Install a new expanded pathway along Newell to connect to the Library and Arts center.
  - Provide better connection to link surrounding facilities.
  - Lighting should be provided along all major paths of travel.
- **Program Elements**
  - Locate the playgrounds together at the west end of the park.
  - All new playground equipment is to be inclusive for all abilities.
  - An adult exercise area shall be located near the playgrounds.
  - Shifting the tennis court to occur at time when the courts are ready for renovation.



# Parks & Rec. Commission Input



- Program Elements (continued)
  - The amphitheater space should remain flexible for uses beyond occasional performances and concerts.
  - A passive recreation activity such as bocce and a picnic area should be installed in the turf area adjacent to the power station.
- Buildings & Concessions
  - If concessions are brought back to the park the food provided should be local and healthy.
  - Concessions should be operated by an outside vendor.
  - A social plaza space should be located near concessions and the pool building.
  - Renovate the existing pool building in it's current location.
- General Comments
  - The LRP should identify priorities of work to be performed and provide individual projects and budgets
  - Improvements will increase the amount of impervious area.
  - There is a concern for impeding on open space, but compromise will have to occur to satisfy needs and program elements of the growing population of park users.
  - The Pool facilities and building need renovation to meet current building codes and community needs.



# Final Draft Long Range Plan



## • Long Range Improvements

Maintain the existing park, preserving the open space and overall aesthetic feel. Renovate and improve park elements to prolong use and to enhance park usability.

### • Existing Park elements to be maintained and enhanced

- Open Turf Area: Repair irrigation and drainage for better use
- Children's playground at East end of Park: Update Equipment and create a more inclusive playground.
- The Amphitheatre: Add Power and a larger stage area.
- The Arboretum area: Remove turf to maintain health of trees and plant new trees to start new native stand.
- Tennis Courts: Shift courts to the East to provide a clear access walkway when resurfacing and new fencing is needed.
- Pool Area: Expand deck space.
- The Magical Forrest: Preserve the forest.
- Group Picnic Area adjacent to Girl scout House: Relocate trash away from area and Install new furnishing.
- Main & Loop walkway: Increase width of walk and enhanced paving. Install pathway lighting.

### • Existing Park elements to be renovated

- Children's tot lot playground: To be relocated adjacent to existing children's playground. Away from heritage oak tree.
- Restroom structure: New restroom facilities to be constructed in the pool building and the new Jr. Museum building.
- Fencing along Walter Hayes Boundary: Replace chain-link with decorative fencing.
- Create better connection to play field at Walter Hayes School for after hours and weekend park use.

- Lucie Stern Parking Lot: Reconfigure, eliminate driveway, clearly define connection walk from Park to Lucie Stern.

## • New Improvements to be added to Park

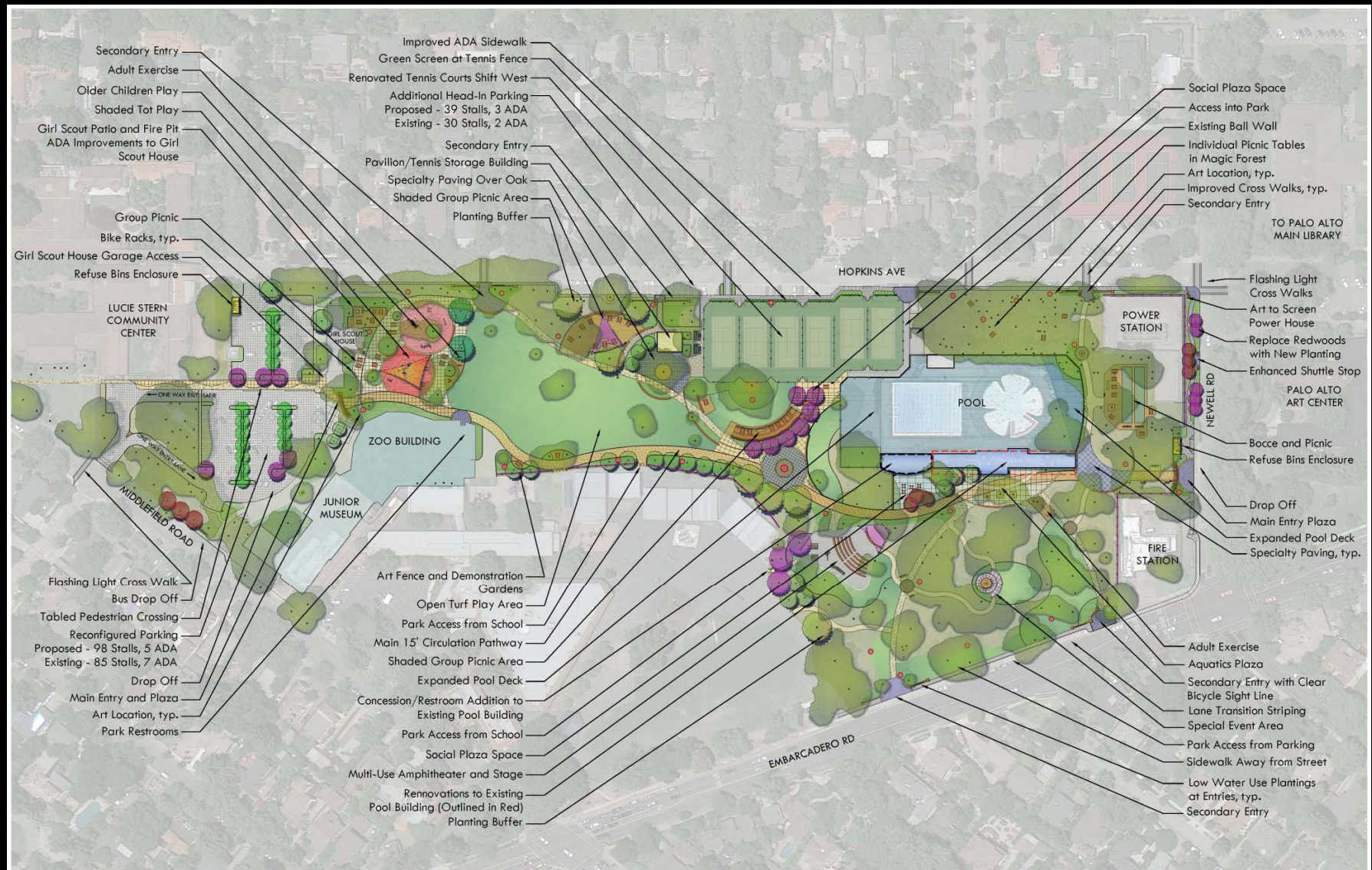
- Two new group picnic areas: Along Hopkins & Adjacent to tennis courts .
- Group covered picnic pavilion and tennis storage structure: Adjacent to the west end of the tennis courts.
- Bocce Court/Group Picnic Area: Adjacent to the power station.
- Special event pavilion: Central to the arboretum
- Fire pit at the Girl Scout House.
- Two trash enclosure structures: One in West parking lot, the other along Newell for easier pick-up, removed from Hopkins side, limit vehicles in the park.
- Social Plaza: Adjacent to pool.
- Adult Exercise equipment.
- Entry monument structures: At west parking lot entry, Along Hopkins, Newell and Embarcadero.
- New walkway along Newell: Connect park to the Main Library and Arts Center. Pull walkway off the street.
- Eliminate turf in non-use areas or under trees and replace with more sustainable planting: Along Hopkins, School edge & entries
- Install bios wales along school edge and Hopkins to prevent run-off.

## • Street Improvements

- Head in parking stalls added along Hopkins (7 spaces).
- Add an accessible sidewalk along Hopkins at Tennis courts & Magical Forest.
- Enhanced crosswalks at Middlefield and Newell.
- Added shuttle stop along Middlefield.
- Enhanced shuttle stop along Newell.
- Expanded parking area and bike lane on Embarcadero.



# Final Draft Long Range Plan

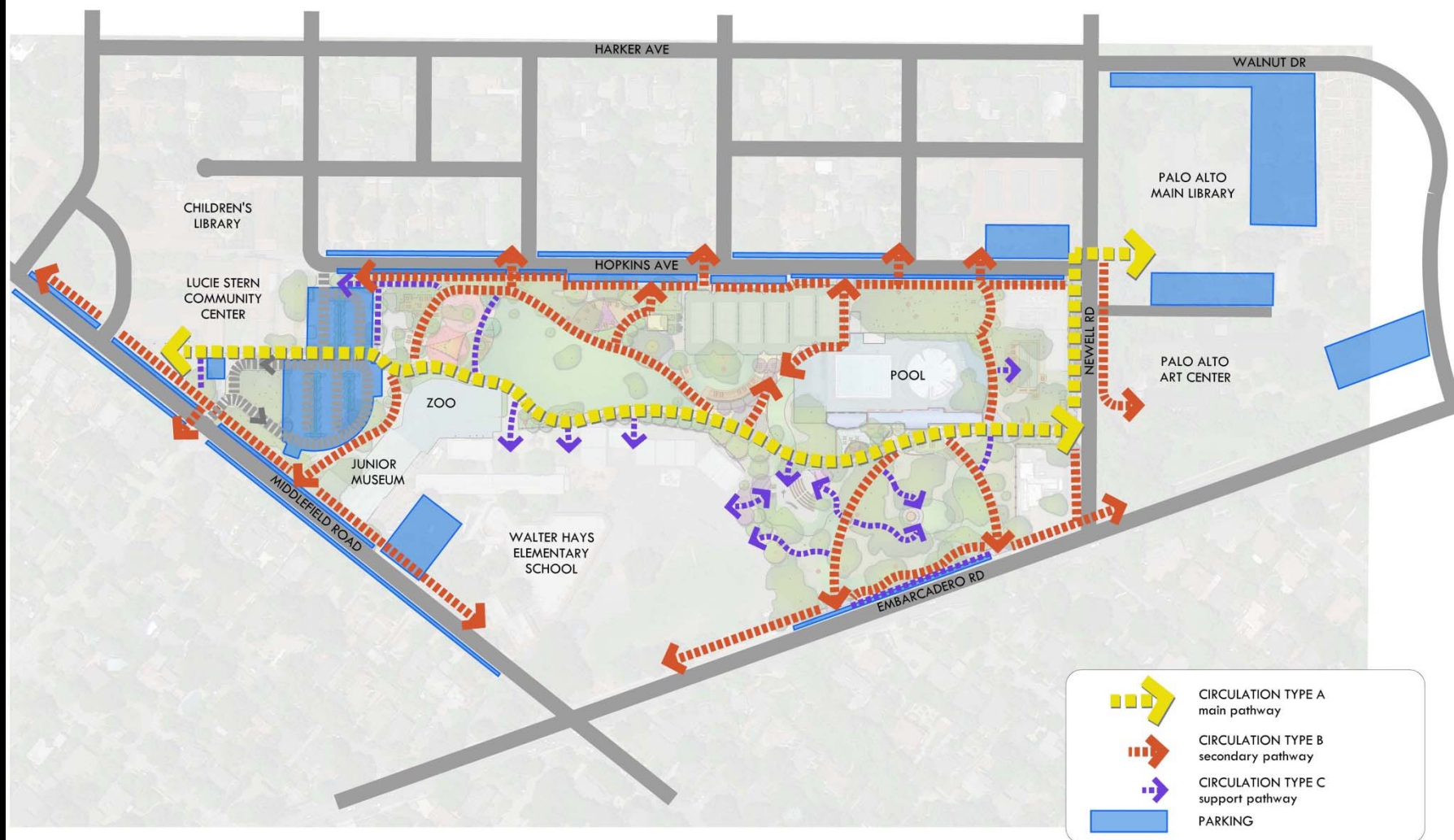


Rinconada Park Long Range Plan  
City of Palo Alto – Community Meeting

9.12.13

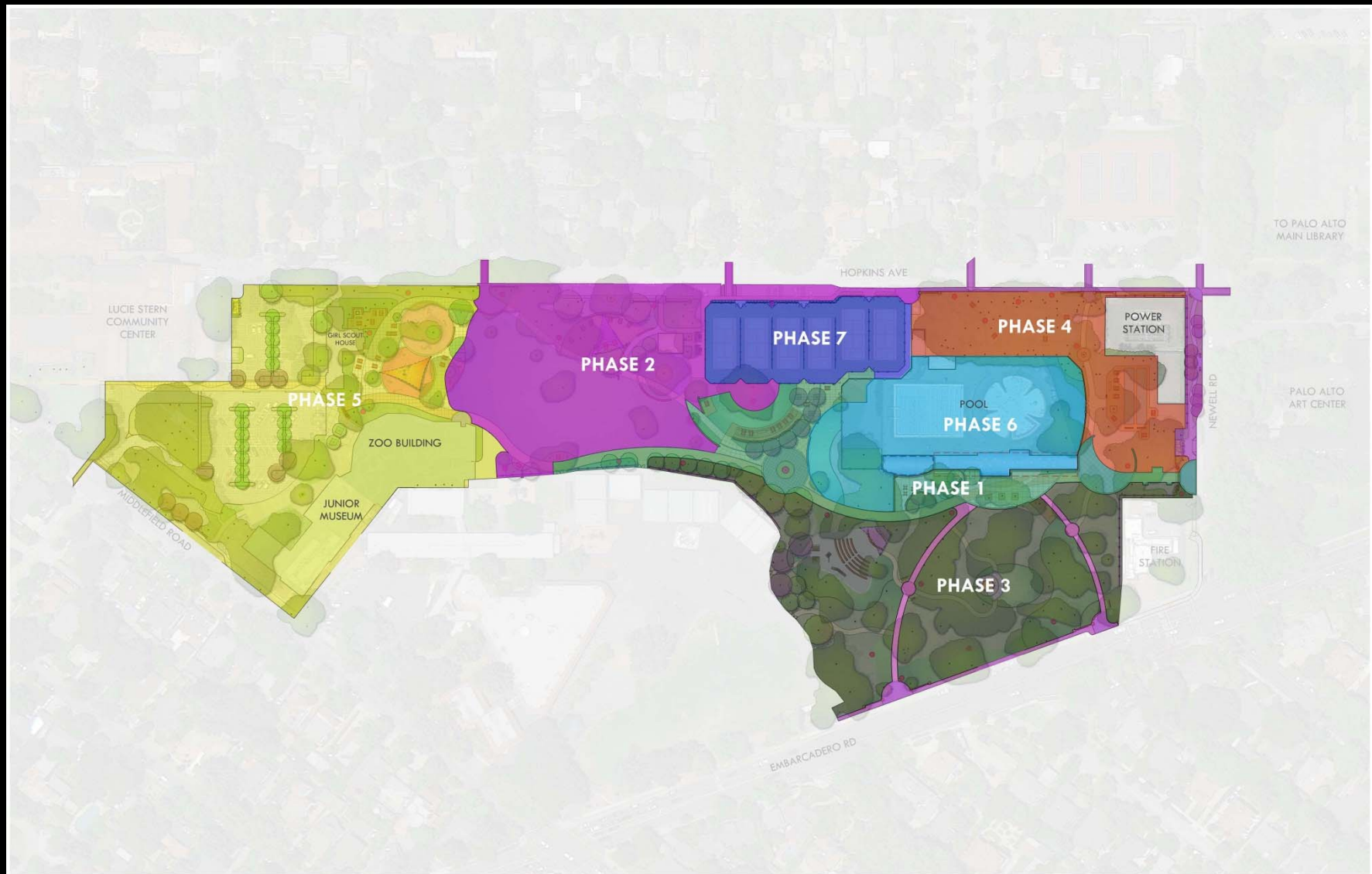


# Final Draft LRP – Connection Overview





# Final Draft LRP – Work Phasing Plan



# Phase 1 (2014)



Rinconada Park Long Range Plan  
City of Palo Alto – Community Meeting

9.12.13



# Phase 2 (2018)



# Phase 3 (2020-2025)





# Phase 4 (2020-2025)

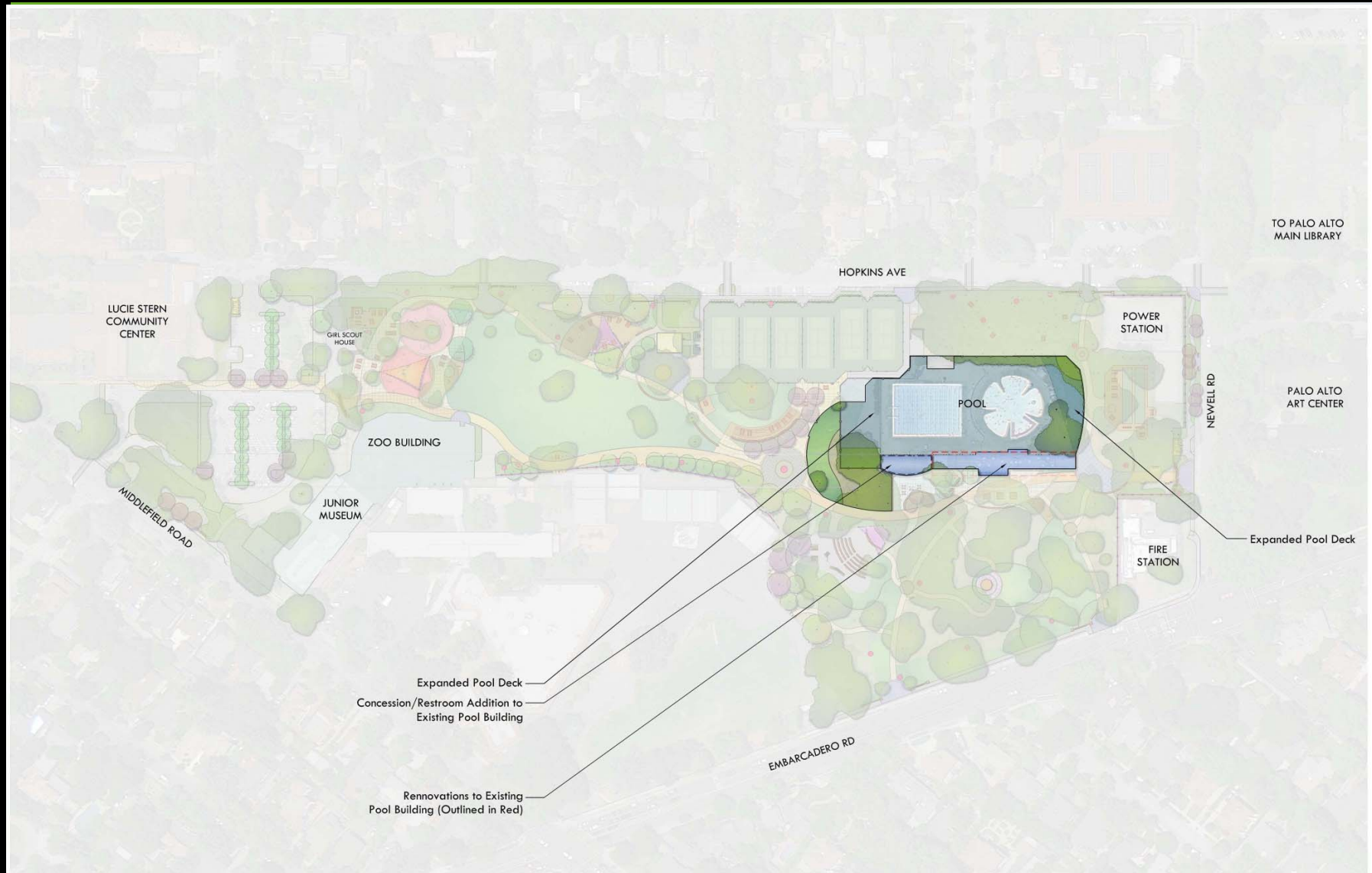


# Phase 5 – (Per JMZ Construction)





# Phase 6 (2025-2030)



# Phase 7 (2030-2035)





# Community Input & Comment



Rinconada Park Long Range Plan  
City of Palo Alto – Community Meeting

9.12.13



# Next Steps



- Park and Recreation Comm.- 10/22
- Architectural Review Board – 11/21
- City Council – December 2013
- Phase 1 Construction – Summer 2014





# Comments & Questions

