

# Rinconada Park Long Range Plan

Community Workshop #1  
City of Palo Alto

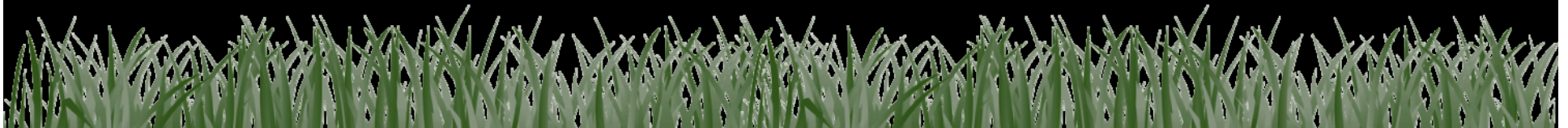
April 10, 2012



CITY OF  
**PALO  
ALTO**



**VERDE DESIGN**  
LANDSCAPE ARCHITECTURE  
CIVIL ENGINEERING  
SPORT PLANNING & DESIGN



# Agenda

- Introduction
  - Goals and Objectives
  - Project Schedule
- Major Opportunities & Constraints Recap
- Break Out Session
- Site Analysis
- Next Steps





# Long Range Plan – Why?



VERDE DESIGN

- Coordination and update of Park resources and amenities to reflect current and future needs of park.
- Respond to park usage as it relates to surrounding uses and neighborhood.
- Code and infrastructural improvements
- Coordination of user group objectives



# Project Schedule



VERDE DESIGN

- Project Start Date February 14, 2012
- Site Inventory and Analysis February 15 to May 1, 2012
  - Community Meeting #1 April 10, 2012
  - Community Meeting #2 - Stakeholders April 24, 2012
  - Park and Recreation Commission April 24, 2012
  - Bicycle Advisory Committee May 1, 2012
- Design Development May 1 to June 26, 2012
  - Concepts & Prelim. Environ. Assessment May 22, 2012
  - Community Meeting #3 June 5, 2012
  - Art Commission Presentation June 21, 2012
  - Park and Recreation Commission June 26, 2012



# Project Schedule



VERDE DESIGN

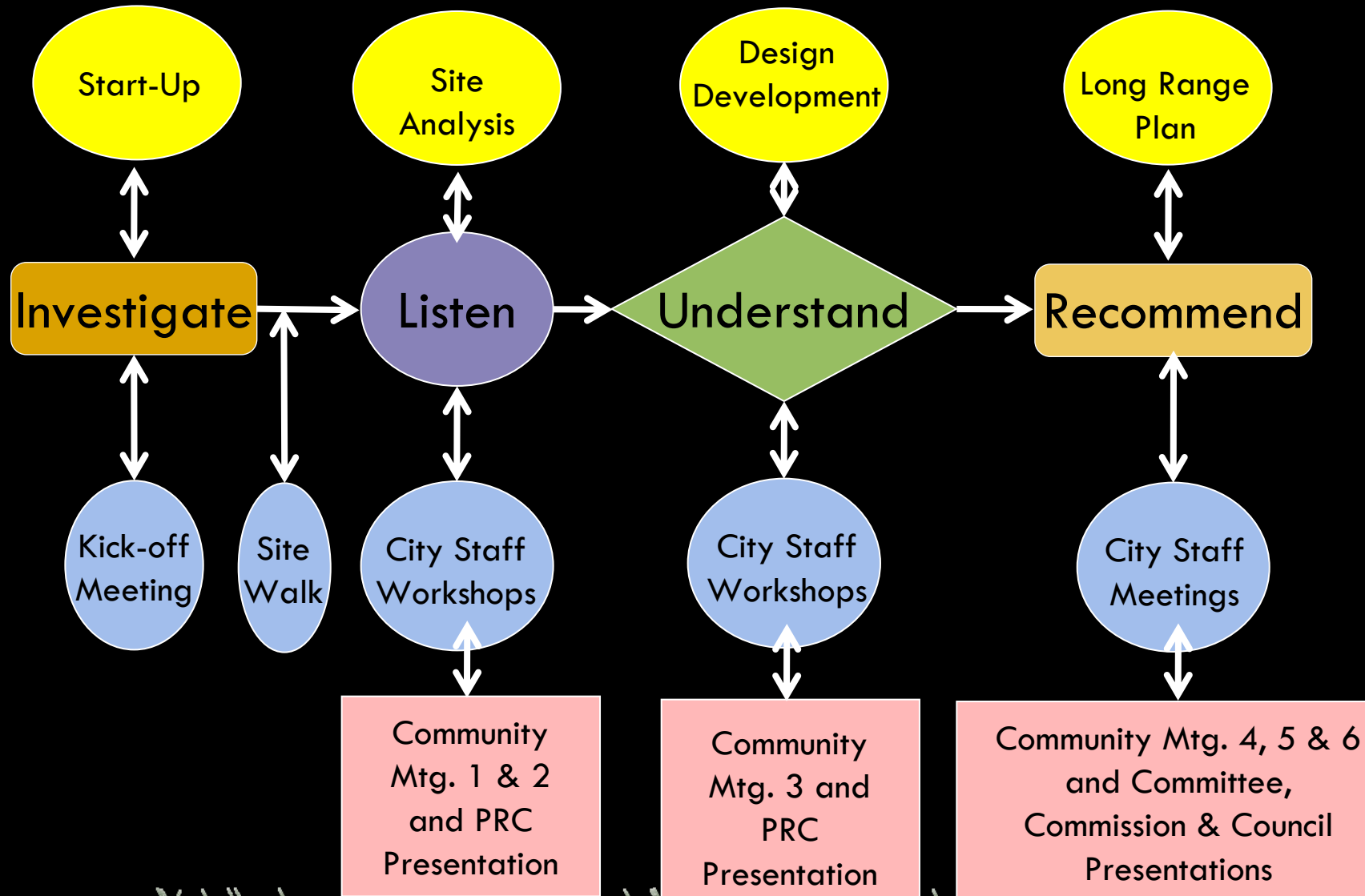
- Draft Long Range Plan                      July 11 to November 1, 2012
  - Draft Long range Plan              July 12, 2012
  - Community Meeting #4 – Stakeholders                      July 25, 2012
  - Community Meeting #5                      August 2, 2012
  - Park and Recreation Commission                      September 20, 2012
  - Architectural Review Board Presentation                      October 4, 2012
  - Planning and Transportation Commission                      October 10, 2012
  - Historical Resources Board Presentation                      October 17, 2012
  - City Council Presentation                      October 29, 2012
- Long Range Plan                      Nov.11 to February 11, 2013
  - Community Meeting #6                      January 10, 2013
  - City Council Presentation                      February 11, 2013
- Final Project Deliverables                      Feb. 12 to

February 25, 2013

# Long Range Plan Design Process



VERDE DESIGN



# Existing Conditions



VERDE DESIGN



Rinconada Park Long Range Plan  
City of Palo Alto

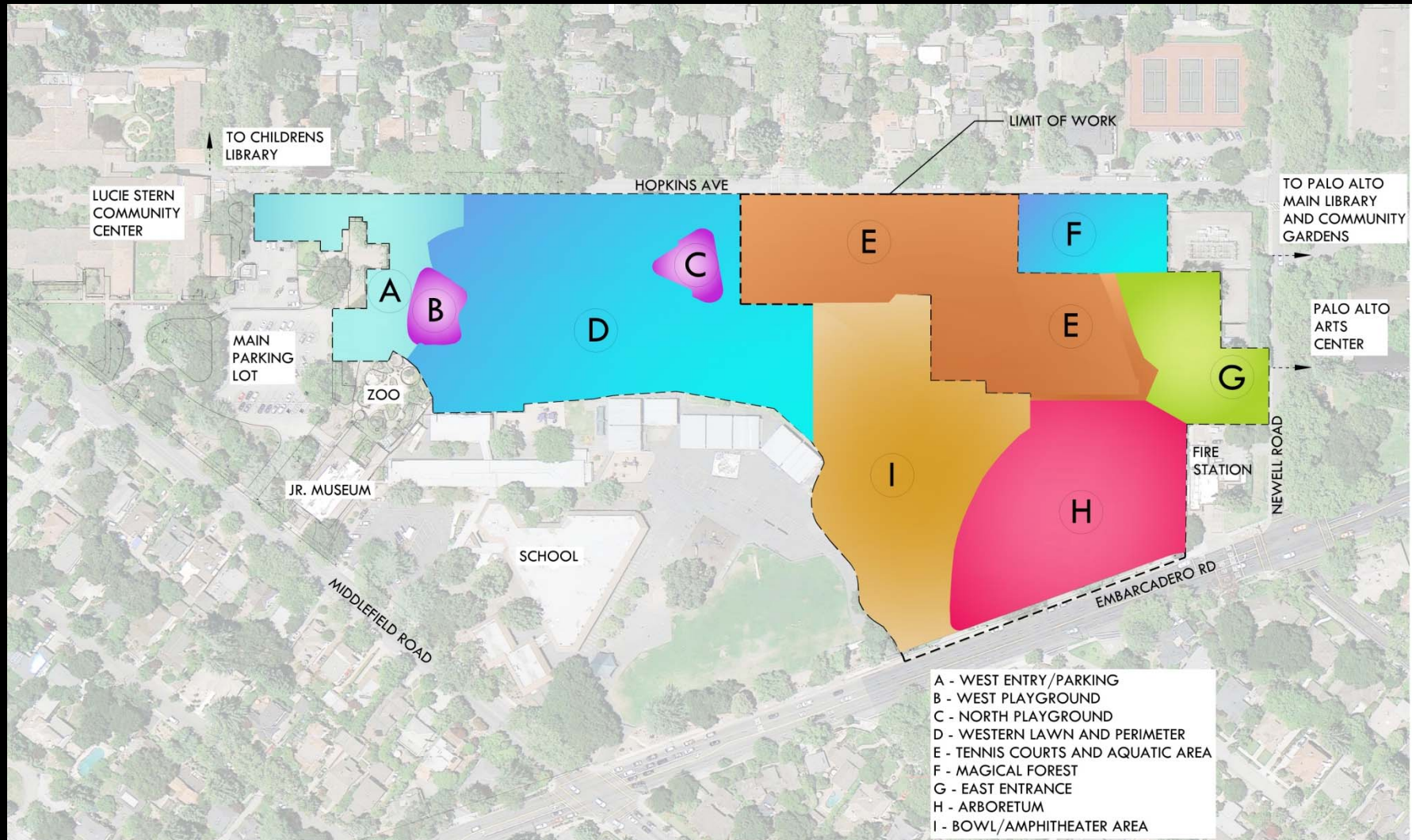
4.10.12



# Existing Conditions



VERDE DESIGN





# Major Opportunities and Constraints



- Opportunities
  - Improved Connectivity
  - Education/Awareness
  - Expanded Program
  - Good “Bones”/Trees
  - Artwork
  - Sustainable Park





# Major Opportunities and Constraints



VERDE DESIGN

- Constraints
  - Interface with Adjacent Uses
  - Existing Layout
  - Historical Use
  - Trees
  - Parking





# Break Out Session



VERDE DESIGN

- What is positive?
- What are the issues?
- What is missing?
- What needs improvement?



Rinconada Park Long Range Plan  
City of Palo Alto

4.10.12



# Initial Site Analysis Assessments



VERDE DESIGN

- Park internal and external circulation
- Park entries/connections
- Group Picnic area improvements
- Playgrounds
- Restroom/Storage/Tennis check-in
- Trash collection design
- Park and School shared borders
- Tree Protection and reforestation
- Irrigation renovation to save water





# Initial Site Analysis Assessments



VERDE DESIGN

- Park Circulation - Connectivity
  - Pedestrian uses, walking, jogging, etc.
  - Bicycle uses, leisurely rides, transportation, etc.
  - Auto parking
  - Service and Maintenance vehicles
  - Mass transit
  - Drop off areas and pick up/school uses





# Initial Site Analysis Assessments



VERDE DESIGN

- Park Circulation - Connectivity
- Park Entries
  - Serve as connectors to adjacent uses and gateways to park
  - Scale and function to be examined
  - Unified vernacular with adjacent uses





# Initial Site Analysis Assessments



VERDE DESIGN

- Park Circulation - Connectivity
- Park Entries
- Group picnic area improvements
  - Better defined and equipped
  - Explore alternate locations or expansion
  - Accessibility





# Initial Site Analysis Assessments



VERDE DESIGN

- Park Circulation - Connectivity
- Park Entries
- Group Picnic Area improvements
- Playgrounds
  - Possibly combine age groups into same general area
  - Reconfigure to lessen impact on adjacent trees
  - Update play equipment
  - Themed play





# Initial Site Analysis Assessments



VERDE DESIGN

- Park Circulation - Connectivity
- Park Entries
- Group Picnic Area improvements
- Playgrounds
- Restroom/Storage/Tennis Check-in
  - Restrooms
    - Code improvements
    - Capacity review
    - Functionality review
  - Equipment storage
  - Tennis check-in office



# Initial Site Analysis Assessments



VERDE DESIGN

- Park Circulation - Connectivity
- Park Entries
- Group Picnic Area improvements
- Playgrounds
- Restroom/Storage/Tennis Check-in
- Trash control/collection
  - Combination of trash, recyclables and compost receptacles
  - Identify and define dumpster locations and enclosures for effective servicing
  - Unified materials for containers





# Initial Site Analysis Assessments



VERDE DESIGN

- Park Circulation - Connectivity
- Park Entries
- Group Picnic Area improvements
- Playgrounds
- Restroom/Storage/Tennis Check-in
- Trash control/collection
- Park and School Connections
  - Educational opportunities
  - Look at connections/needs
  - Improve aesthetics of park/school border



# Initial Site Analysis Assessments



VERDE DESIGN

- Park Circulation - Connectivity
- Park Entries
- Group Picnic Area improvements
- Playgrounds
- Restroom/Storage/Tennis Check-in
- Trash control/collection
- Park and School connections
- Trees
  - Protect existing trees – biggest asset
  - Develop a reforestation plan to support a permanent tree canopy and define spatial areas





# Initial Site Analysis Assessments



VERDE DESIGN

- Park Circulation - Connectivity
- Park Entries
- Group Picnic Area improvements
- Playgrounds
- Restroom/Storage/Tennis Check-in
- Trash control/collection
- Park and School connections
- Trees
- Irrigation
  - Reduce turf around trees to improve tree health and define edges for improved maintenance efficiencies
  - Incorporate latest smart controller, flow sensing, and water distribution technologies to comply with AB 1881 mandates
  - Reduce water use with more water efficient plantings



# Initial Site Analysis Assessments



VERDE DESIGN

## Opportunity for Expansion or Additional Amenities

- Way-finding signage
- Combine both age group playgrounds to one playground
- Increase parking and drop off areas
- Future Amphitheater
- Pathway improvement and adding edgebands
- Improve maintenance and service vehicle routes and safety/dumpster locations
- Unified theme of park amenities
- Pathway lights
- Arboretum and plant labels
- Add art to center area of park

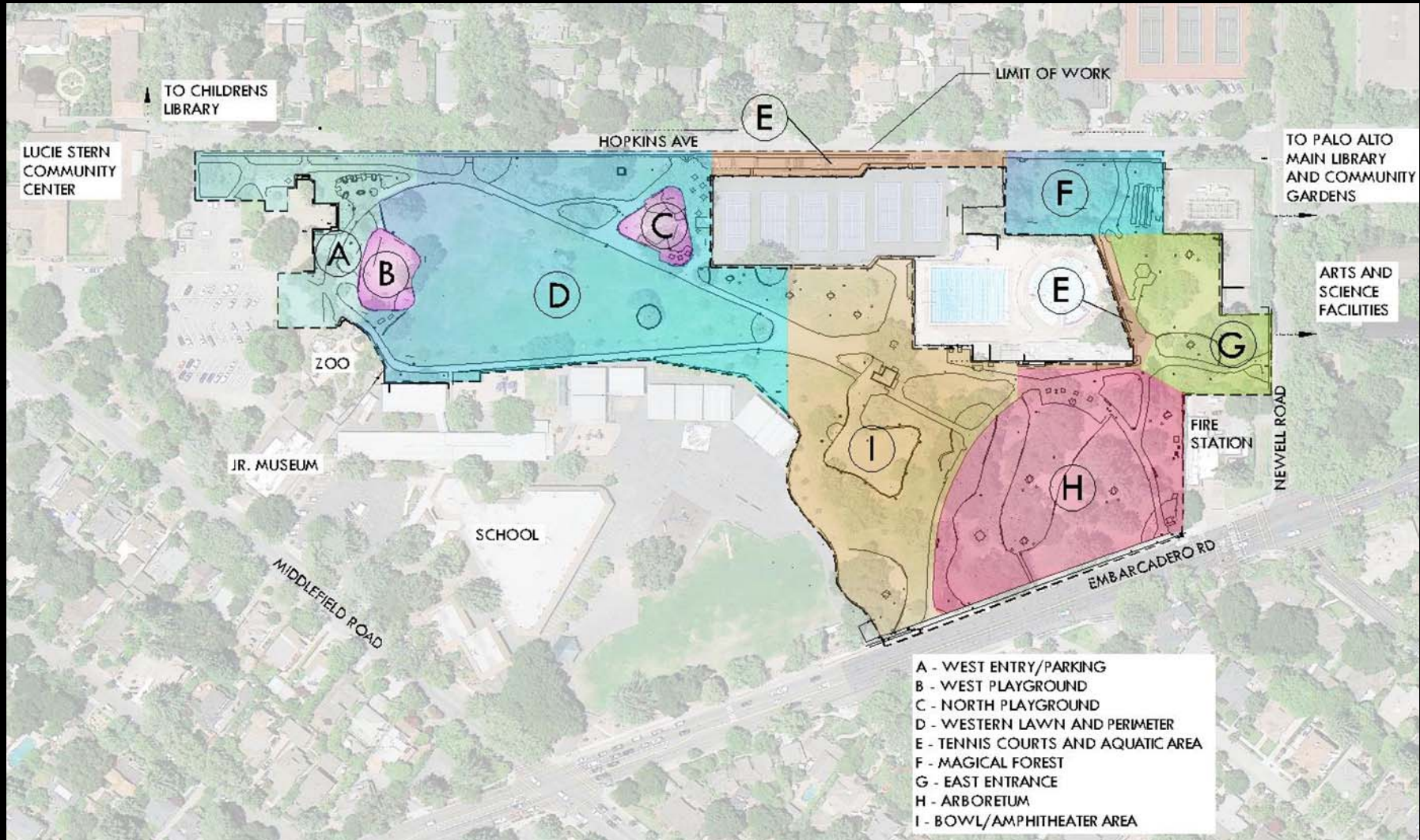




# Overall Site Analysis



VERDE DESIGN

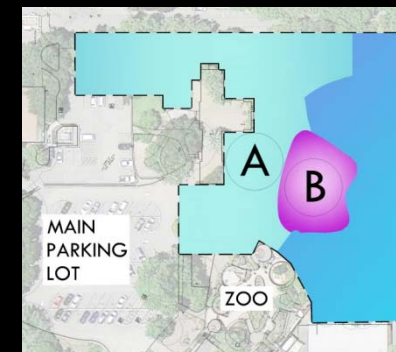




# Enlargements – Areas A and B



VERDE DESIGN



Rinconada Park Long Range Plan  
City of Palo Alto

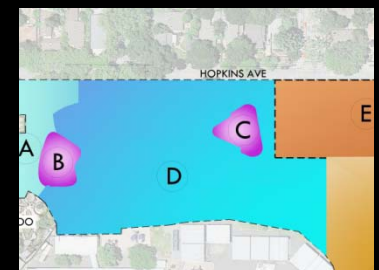
4.10.12



# Enlargements – Areas C and D



VERDE DESIGN



Rinconada Park Long Range Plan  
City of Palo Alto

4.10.12



# Enlargements – Areas E, F and G



VERDE DESIGN



Rinconada Park Long Range Plan  
City of Palo Alto

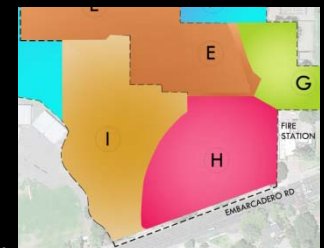
4.10.12



# Enlargements – Areas H and I



VERDE DESIGN



Rinconada Park Long Range Plan  
City of Palo Alto

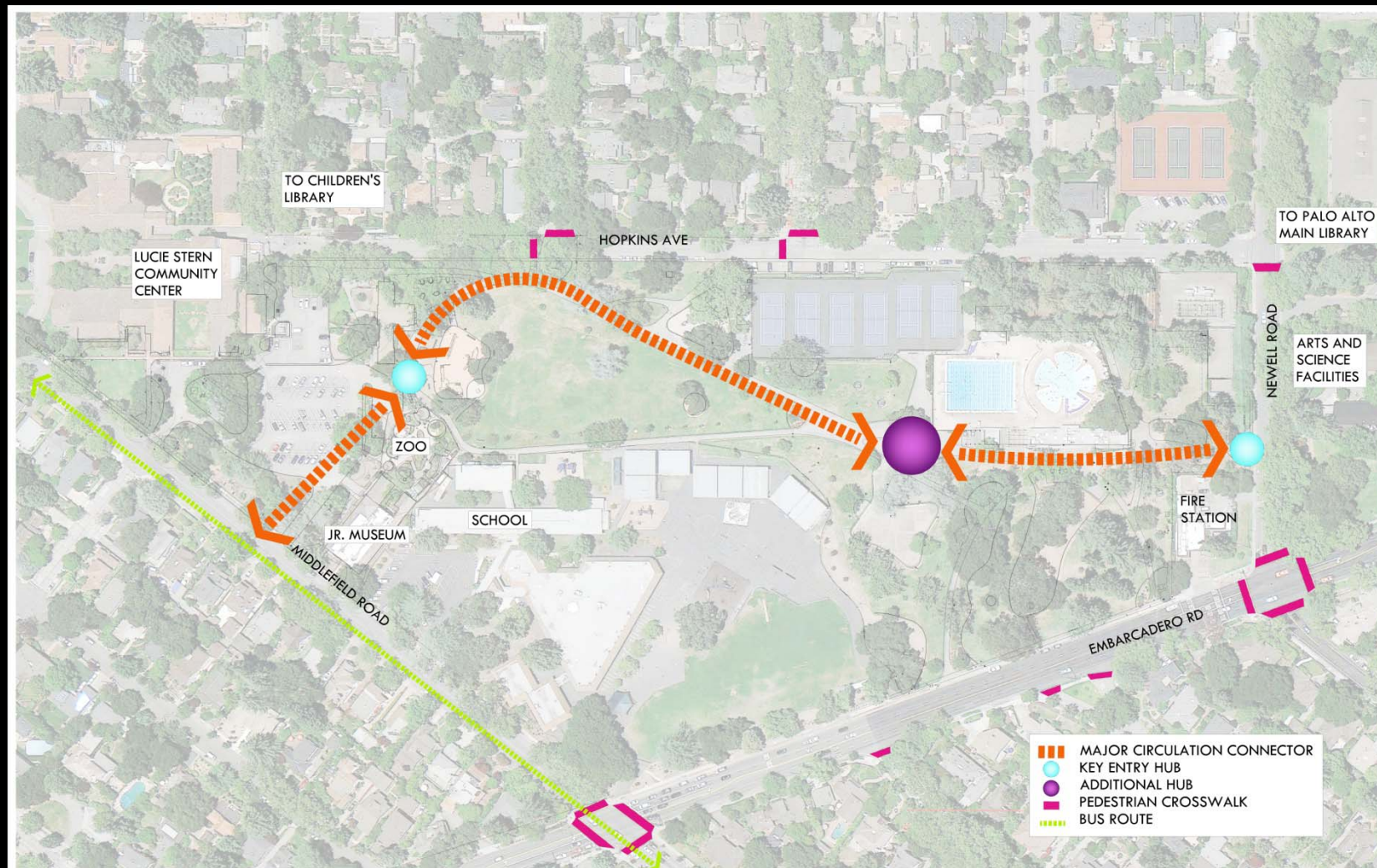
4.10.12



# Circulation – Major Connector



VERDE DESIGN





# Circulation – Secondary Connector



VERDE DESIGN





# Circulation – Pedestrian



VERDE DESIGN

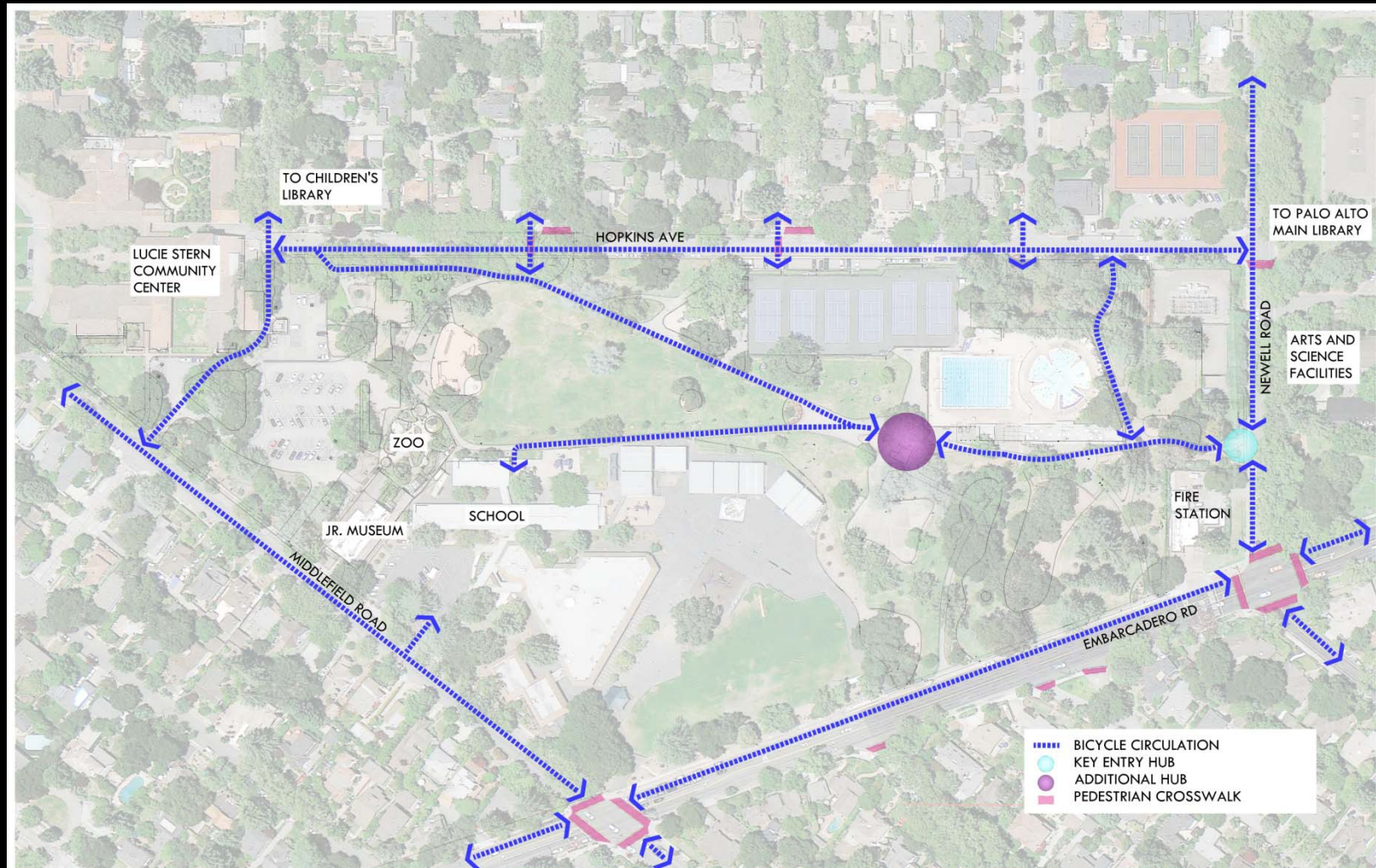




# Circulation – Bicycle



VERDE DESIGN

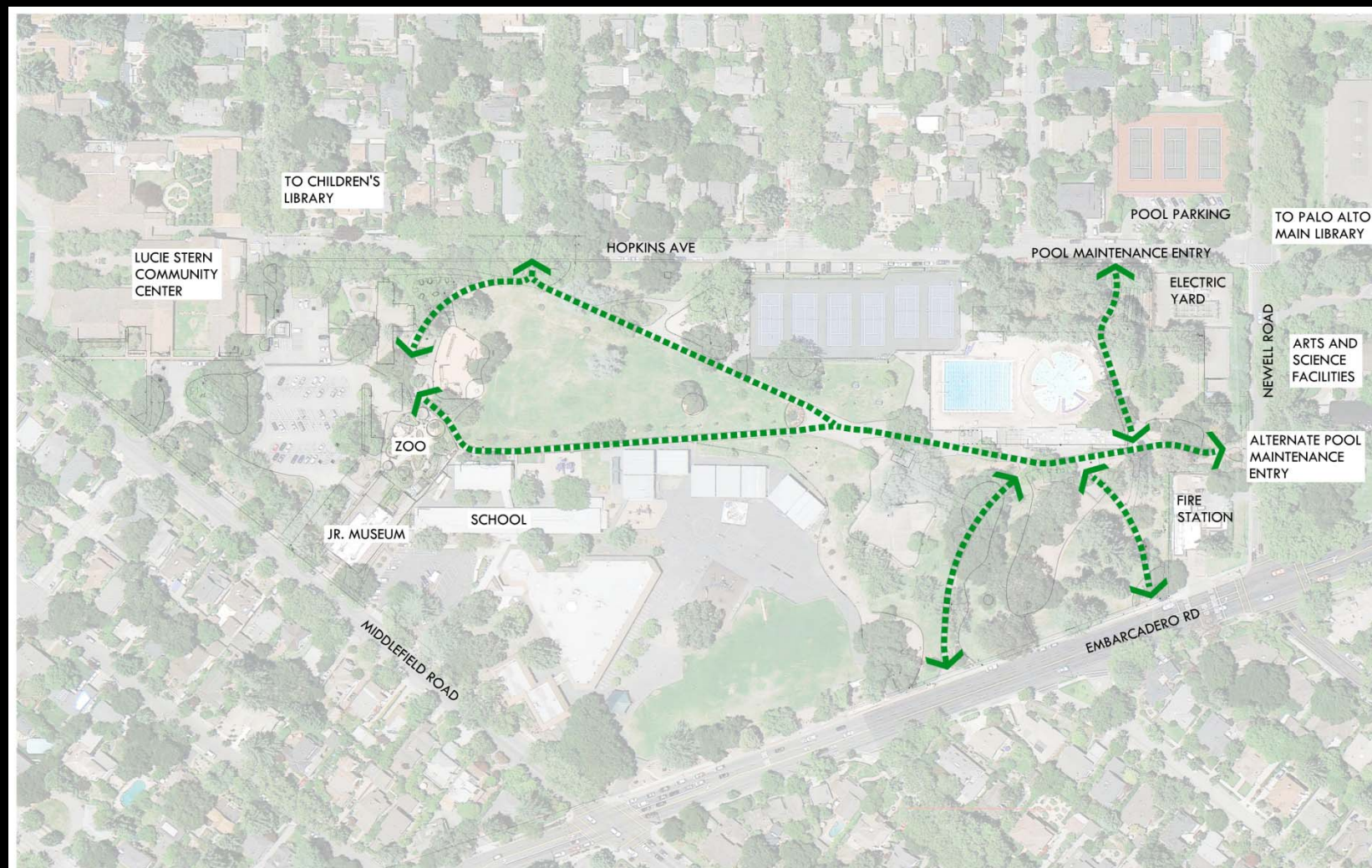




# Circulation – Maintenance/Service



VERDE DESIGN





# Next Steps



VERDE DESIGN

- Review Community input from this meeting
- Stakeholders meeting 4/24/12
- City Staff Review
- Park and Recreation Commission Presentation – Study Session
- Develop Conceptual Alternatives
- Submit Development Concepts and preliminary environmental assessment to City Staff for review





# Questions & Answers

