



# Rinconada Park

# Long Range Plan

City of Palo Alto

Art Commission

June 21, 2012



VERDE DESIGN

LANDSCAPE ARCHITECTURE  
CIVIL ENGINEERING  
SPORT PLANNING & DESIGN



# Agenda

- Introduction
  - Goals and Objectives
  - Project Schedule
- Opportunity & Constraints Input
- Preliminary Concepts
- Incorporating Art
- Types of Art
- Next Steps



# Long Range Plan – Why?

- Coordination and update of Park resources and amenities to reflect current and future needs of park users and guests.
- Respond to park usage as it relates to surrounding uses and neighborhood.
- Building Code and infrastructural improvements
- Coordination of user group objectives





# Project Schedule



- Project Start Date February 14, 2012
- Site Inventory and Analysis February 15 to May 1, 2012
  - Community Meeting #1 April 10, 2012
  - Park and Recreation Commission April 24, 2012
  - Bicycle Advisory Committee May 1, 2012
  - Stakeholders Meeting May 8, 2012
- Design Development May 1 to June 26, 2012
  - Concepts & Prelim. Environ. Assessment May 22, 2012
  - Community Survey Activated May 30 to June 6, 2012
  - Community Meeting #2 June 5, 2012
  - Park and Recreation Commission June 19, 2012
  - Art Commission Presentation June 21, 2012

# Project Schedule



- Draft Long Range Plan      July 11 to November 1, 2012
  - Draft Long Range Plans      July 12, 2012
  - Stakeholders Meeting      July 25, 2012
  - Community Meeting #3      August 2, 2012
  - Park and Recreation Commission      September 20, 2012
  - Architectural Review Board Presentation      October 4, 2012
  - Planning and Transportation Commission      October 10, 2012
  - Historical Resources Board Presentation      October 17, 2012
  - City Council Presentation      October 29, 2012
- Long Range Plan      Nov.11 to February 11, 2013
  - Community Meeting #4      January 10, 2013
  - City Council Presentation      February 11, 2013
- Final Project Deliverables      Feb. 12 to February 25, 2013

# Existing Conditions





# Major Opportunities and Constraints

- Opportunities
  - Improved Connectivity
  - Education/Awareness
  - Expanded Program
  - Good “Bones”/Trees
  - Artwork Integration
  - Sustainable Park



# Major Opportunities and Constraints



- Constraints
  - Interface with Adjacent Uses
  - Existing Layout
  - Historical Use
  - Trees
  - Parking



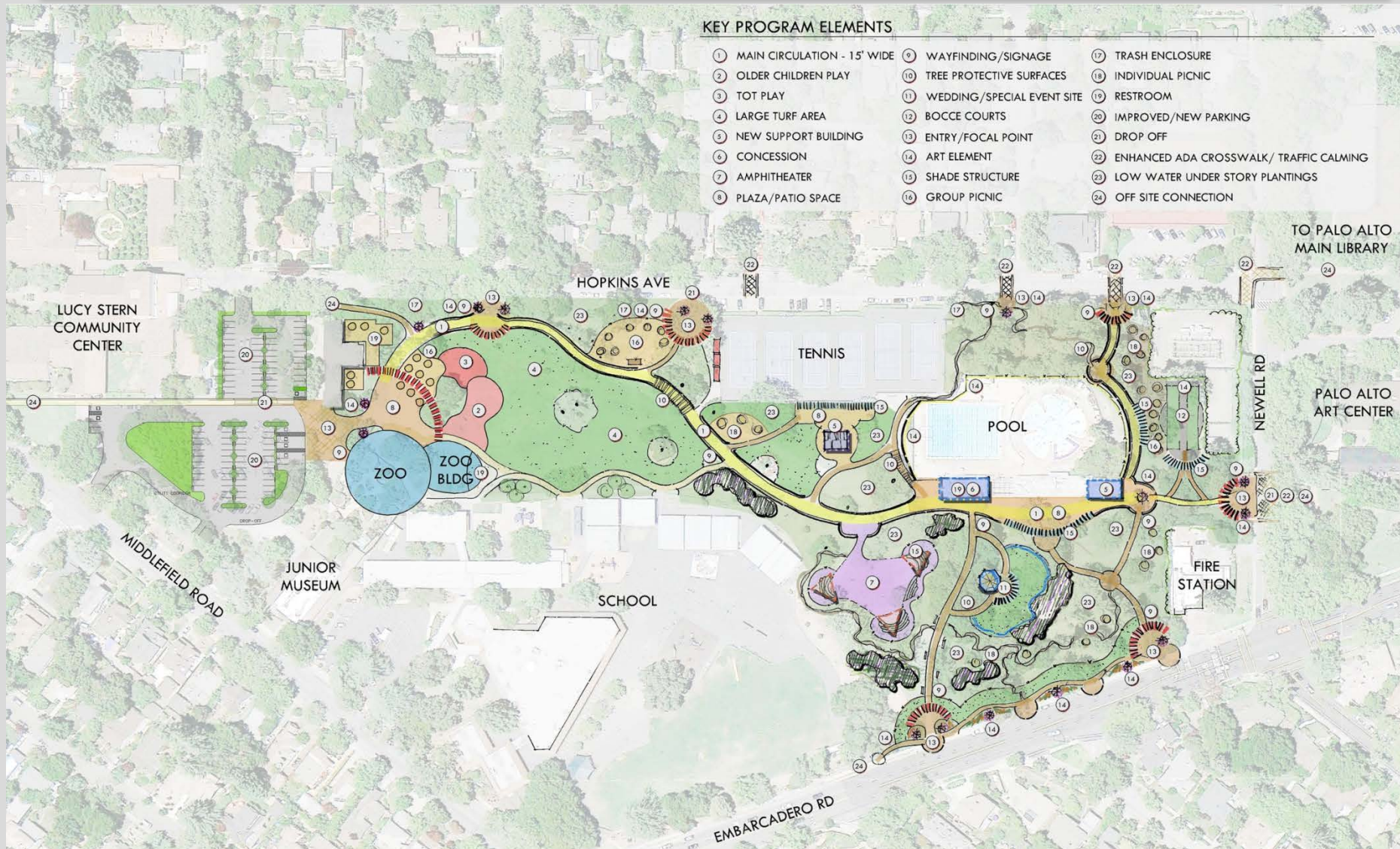


# Preliminary Concepts





# Concept #1





- |                               |                               |                                            |
|-------------------------------|-------------------------------|--------------------------------------------|
| 1 MAIN CIRCULATION - 15' WIDE | 9 WAYFINDING/SIGNAGE          | 17 TRASH ENCLOSURE                         |
| 2 OLDER CHILDREN PLAY         | 10 TREE PROTECTIVE SURFACES   | 18 INDIVIDUAL PICNIC                       |
| 3 TOT PLAY                    | 11 WEDDING/SPECIAL EVENT SITE | 19 RESTROOM                                |
| 4 LARGE TURF AREA             | 12 BOCCIE COURTS              | 20 IMPROVED/NEW PARKING                    |
| 5 NEW SUPPORT BUILDING        | 13 ENTRY/FOCAL POINT          | 21 DROP OFF                                |
| 6 CONCESSION                  | 14 ART ELEMENT                | 22 ENHANCED ADA CROSSWALK/ TRAFFIC CALMING |
| 7 AMPHITHEATER                | 15 SHADE STRUCTURE            | 23 LOW WATER UNDER STORY PLANTINGS         |
| 8 PLAZA/PATIO SPACE           | 16 GROUP PICNIC               | 24 OFF SITE CONNECTION                     |

8 PLAZA/PATIO SPACE

LUCY STERN  
COMMUNITY  
CENTER

HOPKINS AVE

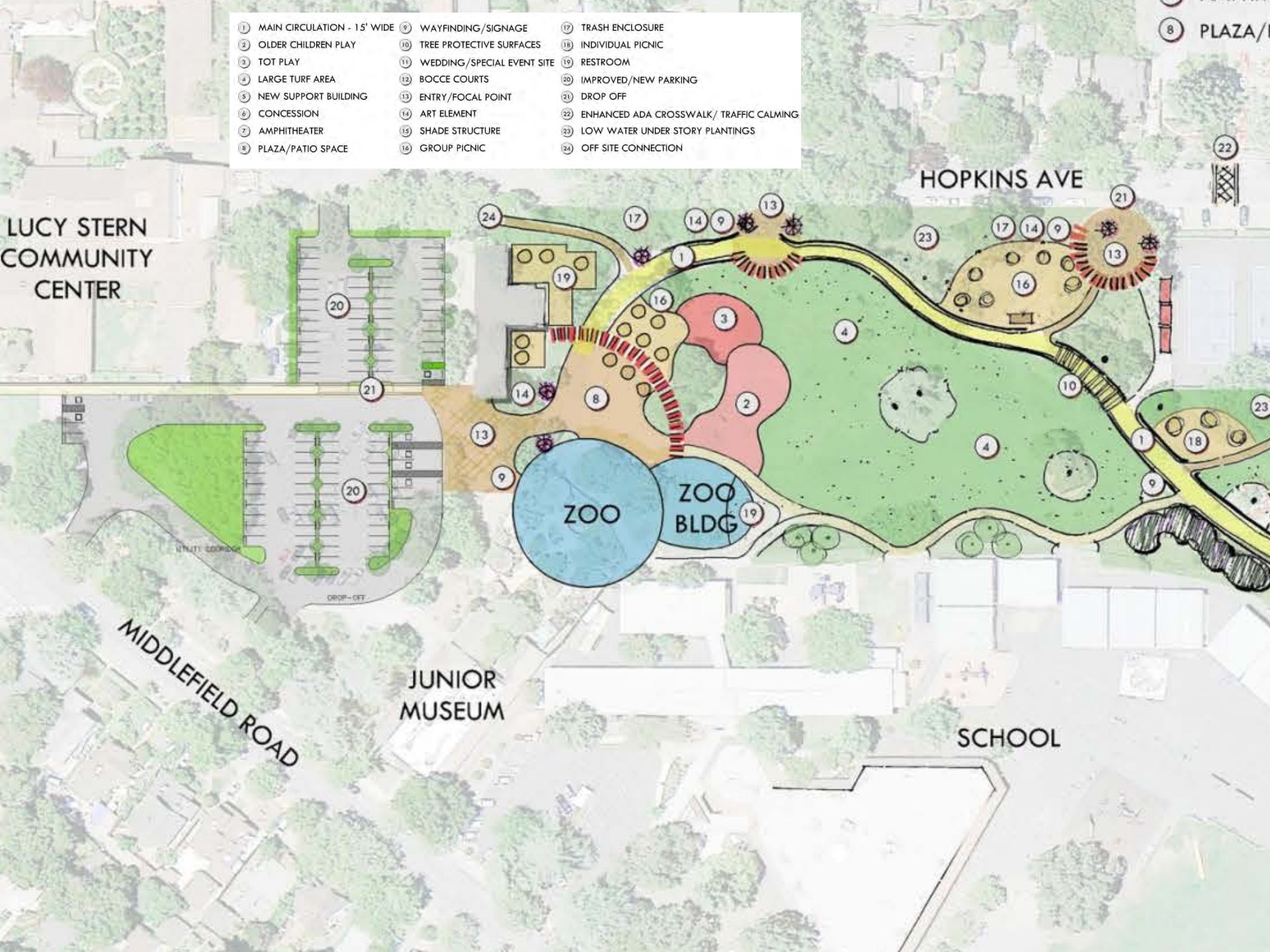
ZOO

ZOO  
BLDG

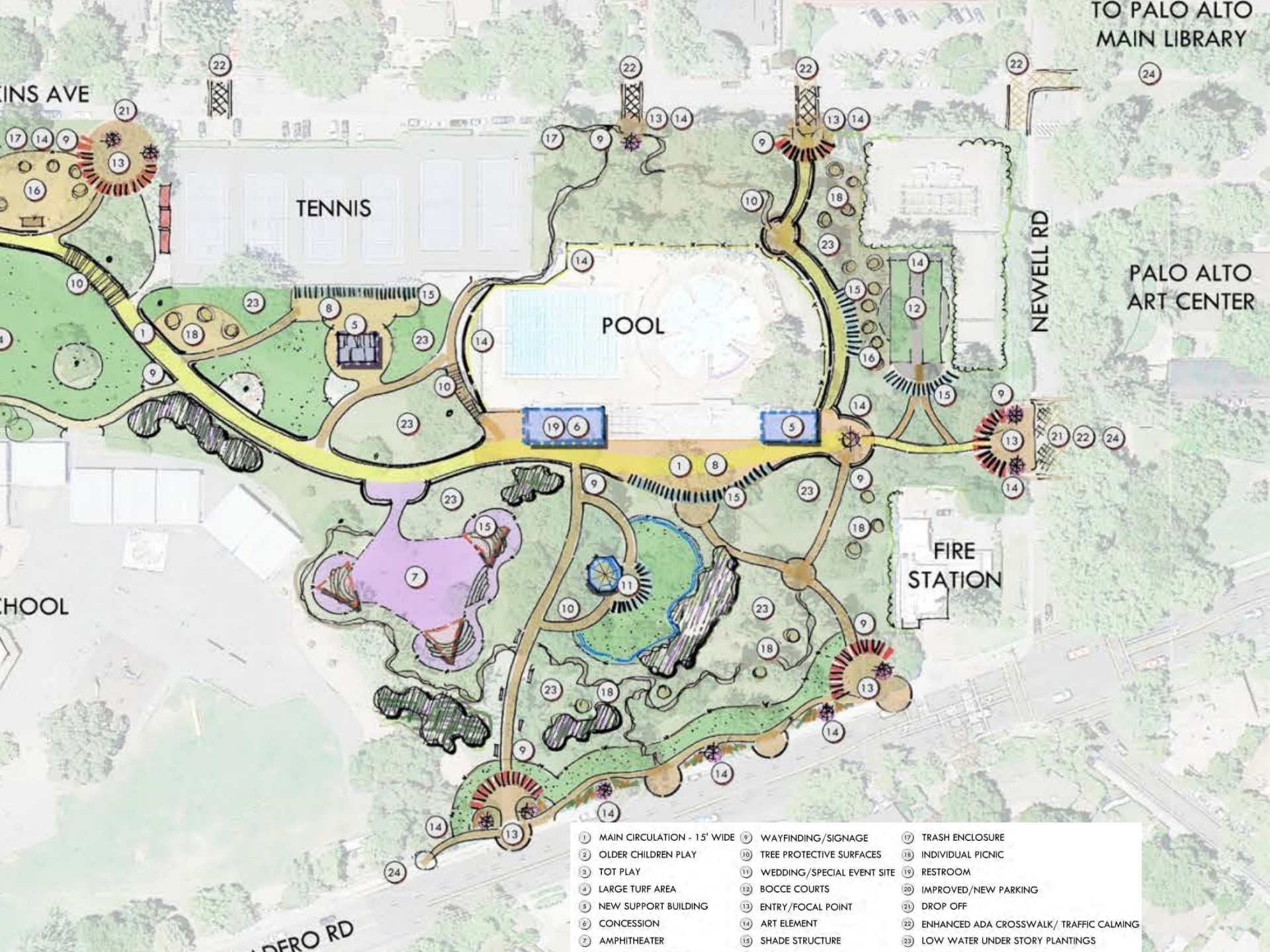
JUNIOR  
MUSEUM

SCHOOL

MIDDLEFIELD ROAD







TO PALO ALTO  
MAIN LIBRARY

PALO ALTO  
ART CENTER

NEWELL RD

TENNIS

POOL

FIRE  
STATION

INS AVE

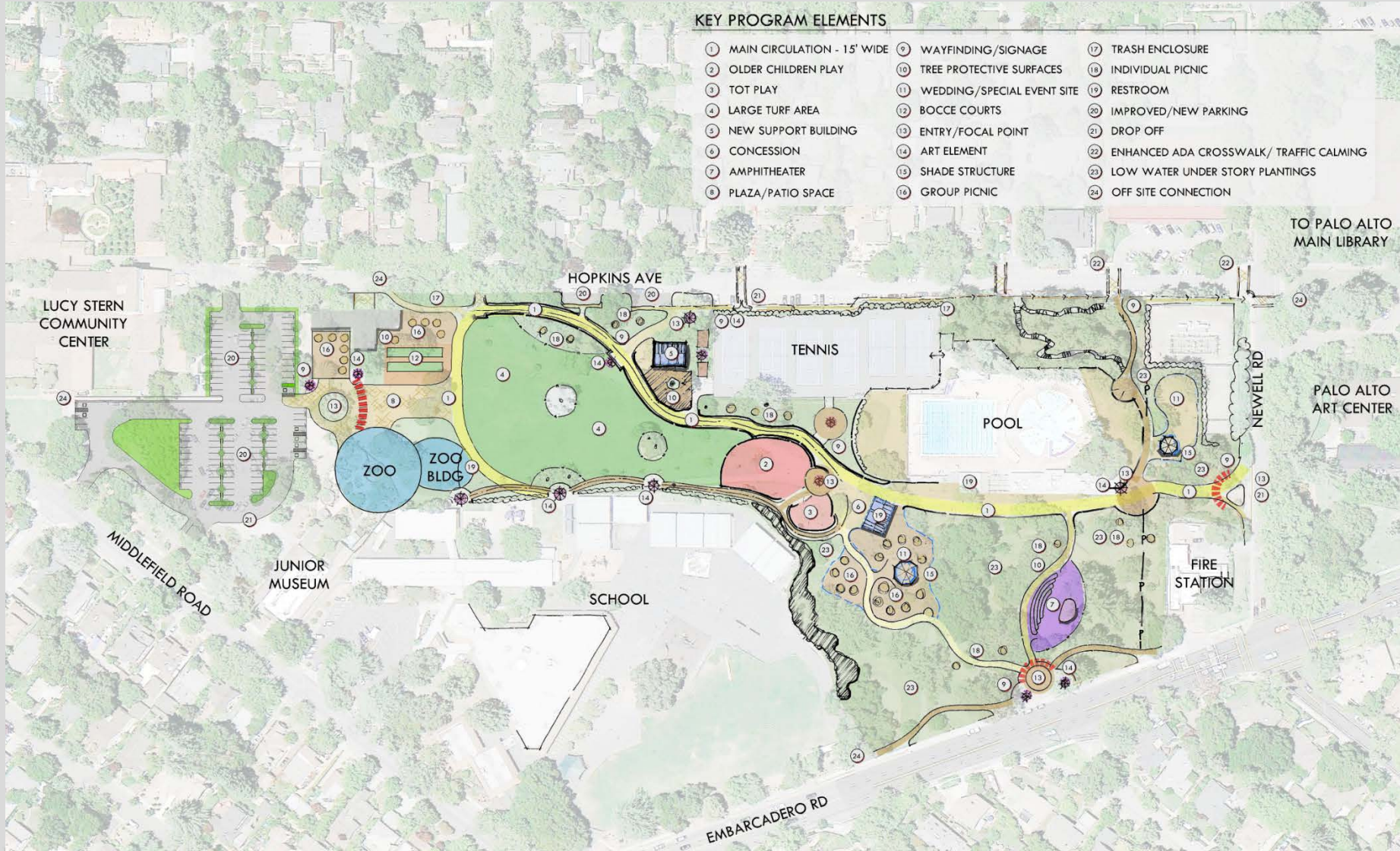
SCHOOL

ADERO RD

- |                               |                              |                                           |
|-------------------------------|------------------------------|-------------------------------------------|
| ① MAIN CIRCULATION - 15' WIDE | ⑨ WAYFINDING/SIGNAGE         | ⑰ TRASH ENCLOSURE                         |
| ② OLDER CHILDREN PLAY         | ⑩ TREE PROTECTIVE SURFACES   | ⑱ INDIVIDUAL PICNIC                       |
| ③ TOT PLAY                    | ⑪ WEDDING/SPECIAL EVENT SITE | ⑲ RESTROOM                                |
| ④ LARGE TURF AREA             | ⑫ BOCCIE COURTS              | ⑳ IMPROVED/NEW PARKING                    |
| ⑤ NEW SUPPORT BUILDING        | ⑬ ENTRY/FOCAL POINT          | ㉑ DROP OFF                                |
| ⑥ CONCESSION                  | ⑭ ART ELEMENT                | ㉒ ENHANCED ADA CROSSWALK/ TRAFFIC CALMING |
| ⑦ AMPHITHEATER                | ⑮ SHADE STRUCTURE            | ㉓ LOW WATER UNDER STORY PLANTINGS         |



# Concept #2





- |                               |                               |                                            |
|-------------------------------|-------------------------------|--------------------------------------------|
| 1 MAIN CIRCULATION - 15' WIDE | 9 WAYFINDING/SIGNAGE          | 17 TRASH ENCLOSURE                         |
| 2 OLDER CHILDREN PLAY         | 10 TREE PROTECTIVE SURFACES   | 18 INDIVIDUAL PICNIC                       |
| 3 TOT PLAY                    | 11 WEDDING/SPECIAL EVENT SITE | 19 RESTROOM                                |
| 4 LARGE TURF AREA             | 12 BOCCE COURTS               | 20 IMPROVED/NEW PARKING                    |
| 5 NEW SUPPORT BUILDING        | 13 ENTRY/FOCAL POINT          | 21 DROP OFF                                |
| 6 CONCESSION                  | 14 ART ELEMENT                | 22 ENHANCED ADA CROSSWALK/ TRAFFIC CALMING |
| 7 AMPHITHEATER                | 15 SHADE STRUCTURE            | 23 LOW WATER UNDER STORY PLANTINGS         |
| 8 PLAZA/PATIO SPACE           | 16 GROUP PICNIC               | 24 OFF SITE CONNECTION                     |

LUCY STERN  
COMMUNITY  
CENTER

HOPKINS AVE

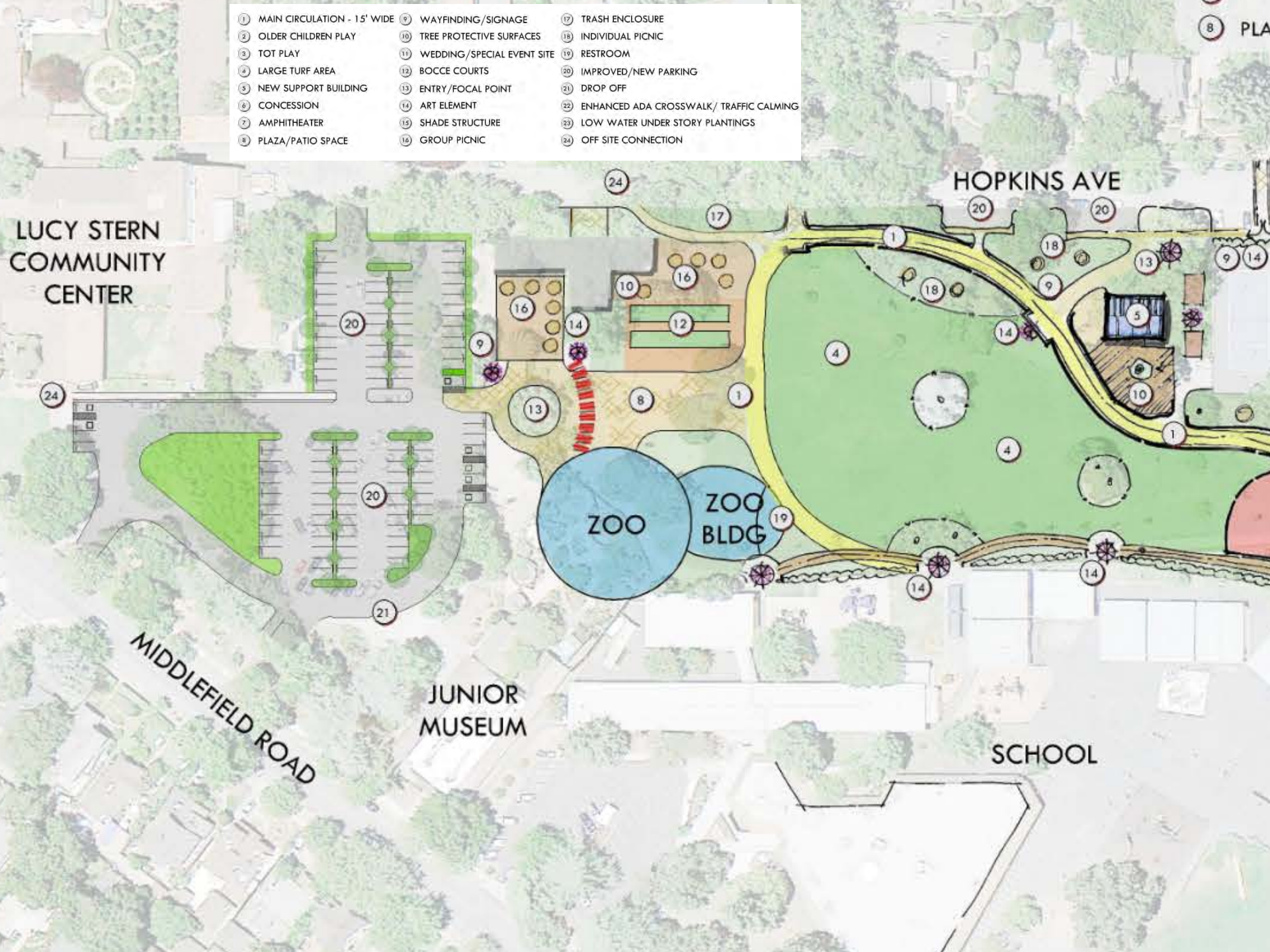
ZOO

ZOO  
BLDG

JUNIOR  
MUSEUM

SCHOOL

MIDDLEFIELD ROAD





TO PALO ALTO  
MAIN LIBRARY

IS AVE

POOL

TENNIS

POOL

NEWELL RD

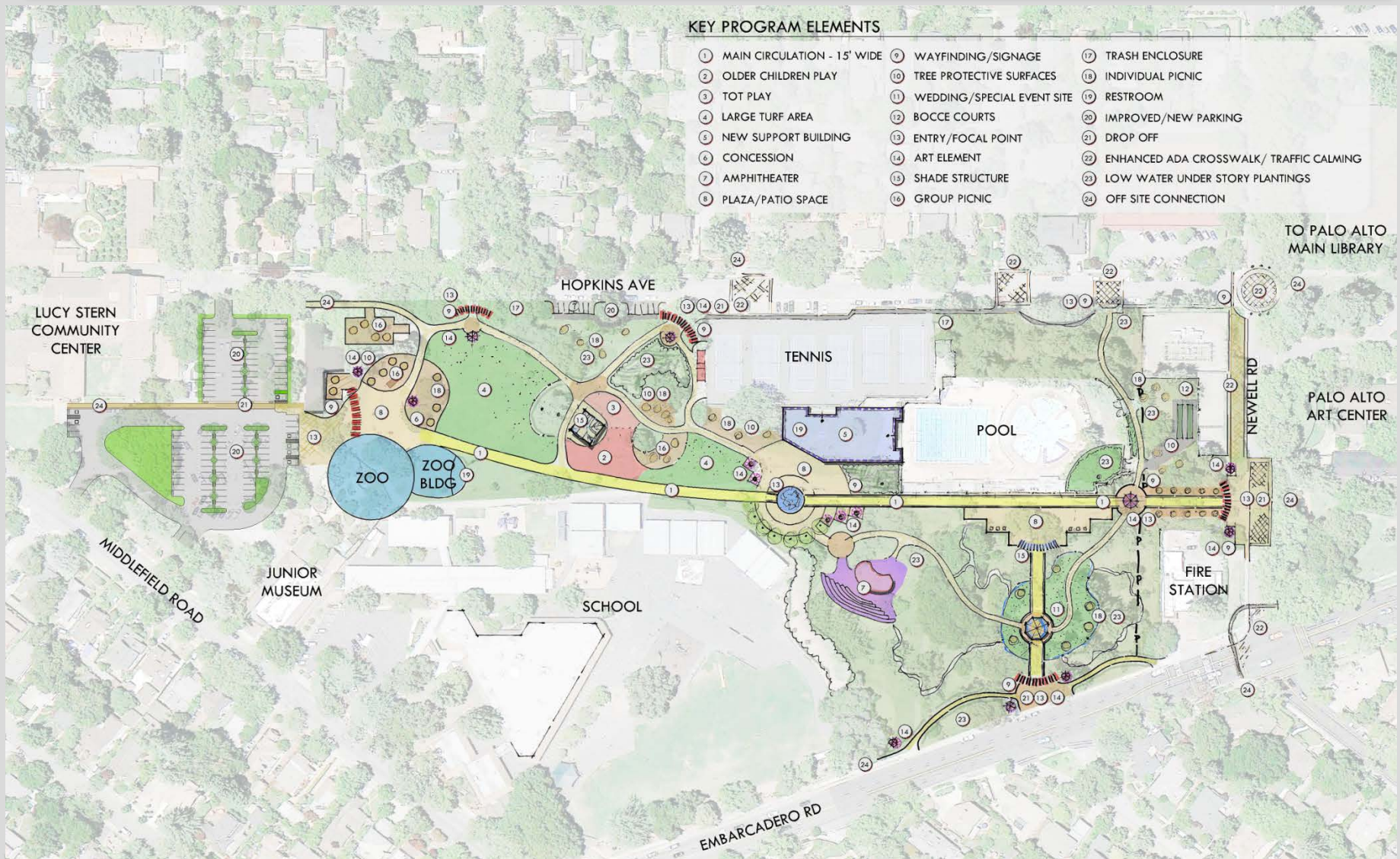
PALO ALTO  
ART CENTER

FIRE  
STATION

- |                               |                              |                                           |
|-------------------------------|------------------------------|-------------------------------------------|
| ① MAIN CIRCULATION - 15' WIDE | ⑨ WAYFINDING/SIGNAGE         | ⑰ TRASH ENCLOSURE                         |
| ② OLDER CHILDREN PLAY         | ⑩ TREE PROTECTIVE SURFACES   | ⑱ INDIVIDUAL PICNIC                       |
| ③ TOT PLAY                    | ⑪ WEDDING/SPECIAL EVENT SITE | ⑲ RESTROOM                                |
| ④ LARGE TURF AREA             | ⑫ BOCCE COURTS               | ⑳ IMPROVED/NEW PARKING                    |
| ⑤ NEW SUPPORT BUILDING        | ⑬ ENTRY/FOCAL POINT          | ㉑ DROP OFF                                |
| ⑥ CONCESSION                  | ⑭ ART ELEMENT                | ㉒ ENHANCED ADA CROSSWALK/ TRAFFIC CALMING |



# Concept #3





- |                               |                               |                                            |
|-------------------------------|-------------------------------|--------------------------------------------|
| 1 MAIN CIRCULATION - 15' WIDE | 9 WAYFINDING/SIGNAGE          | 17 TRASH ENCLOSURE                         |
| 2 OLDER CHILDREN PLAY         | 10 TREE PROTECTIVE SURFACES   | 18 INDIVIDUAL PICNIC                       |
| 3 TOT PLAY                    | 11 WEDDING/SPECIAL EVENT SITE | 19 RESTROOM                                |
| 4 LARGE TURF AREA             | 12 BOCCE COURTS               | 20 IMPROVED/NEW PARKING                    |
| 5 NEW SUPPORT BUILDING        | 13 ENTRY/FOCAL POINT          | 21 DROP OFF                                |
| 6 CONCESSION                  | 14 ART ELEMENT                | 22 ENHANCED ADA CROSSWALK/ TRAFFIC CALMING |
| 7 AMPHITHEATER                | 15 SHADE STRUCTURE            | 23 LOW WATER UNDER STORY PLANTINGS         |
| 8 PLAZA/PATIO SPACE           | 16 GROUP PICNIC               | 24 OFF SITE CONNECTION                     |

- 7 AM  
8 PL

LUCY STERN  
COMMUNITY  
CENTER

HOPKINS AVE

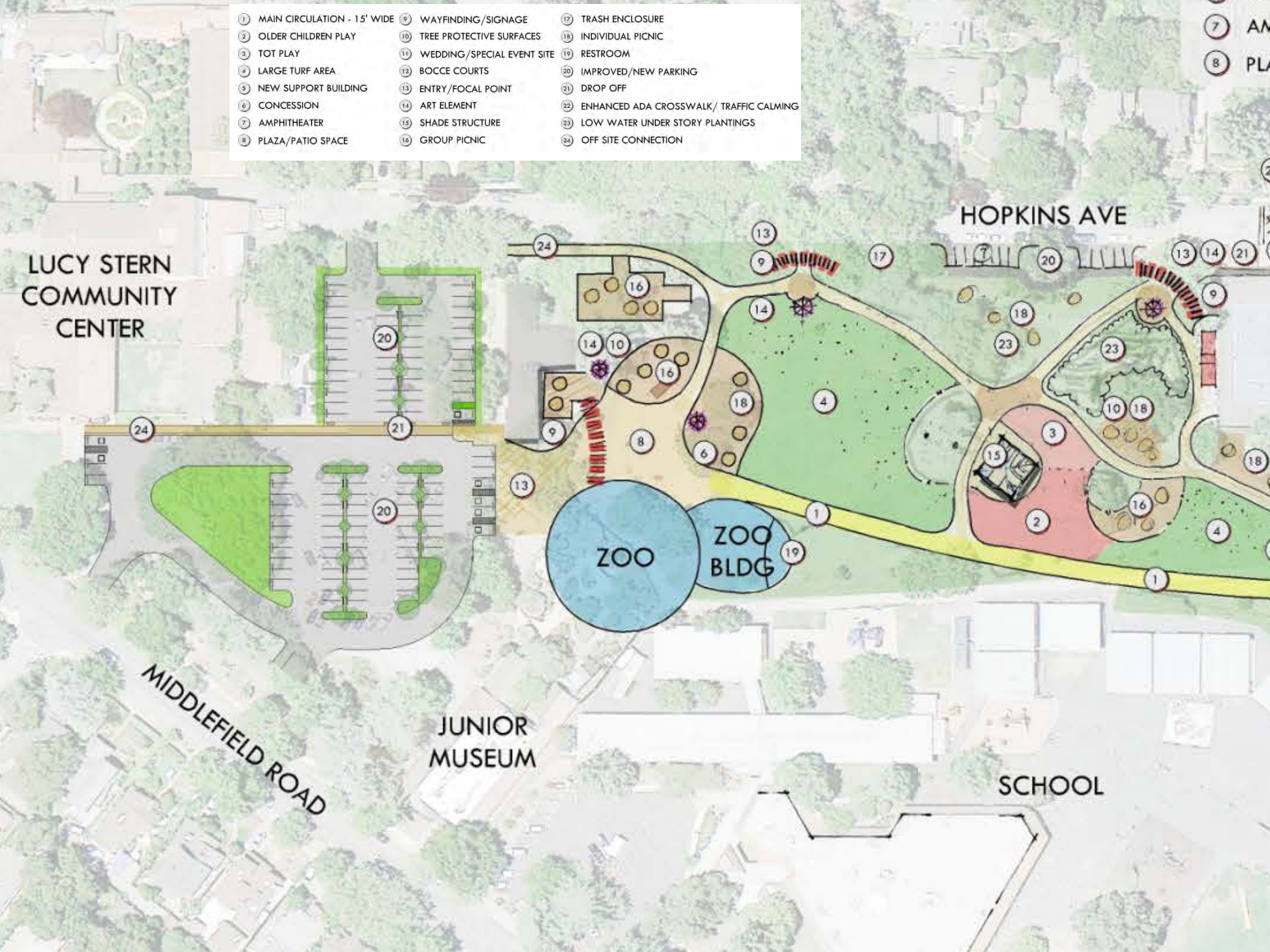
ZOO

ZOO  
BLDG

JUNIOR  
MUSEUM

SCHOOL

MIDDLEFIELD ROAD





TO PALO ALTO  
MAIN LIBRARY

NS AVE

TENNIS

POOL

NEWELL RD

PALO ALTO  
ART CENTER

FIRE  
STATION

POOL

- |                               |                              |                                           |
|-------------------------------|------------------------------|-------------------------------------------|
| ① MAIN CIRCULATION - 15' WIDE | ⑨ WAYFINDING/SIGNAGE         | ⑱ TRASH ENCLOSURE                         |
| ② OLDER CHILDREN PLAY         | ⑩ TREE PROTECTIVE SURFACES   | ⑲ INDIVIDUAL PICNIC                       |
| ③ TOT PLAY                    | ⑪ WEDDING/SPECIAL EVENT SITE | ⑳ RESTROOM                                |
| ④ LARGE TURF AREA             | ⑫ BOCCIE COURTS              | ㉑ IMPROVED/NEW PARKING                    |
| ⑤ NEW SUPPORT BUILDING        | ⑬ ENTRY/FOCAL POINT          | ㉒ DROP OFF                                |
| ⑥ CONCESSION                  | ⑭ ART ELEMENT                | ㉓ ENHANCED ADA CROSSWALK/ TRAFFIC CALMING |
| ⑦ AMPHITHEATER                | ⑮ SHADE STRUCTURE            | ㉔ LOW WATER UNDER STORY PLANTINGS         |



# Incorporating Art into the Park

---



- Considerations
  - How much art?
  - Sight lines
  - Focal Points
  - Buildings and art
  - Structures and art
  - Walls/Paving with art/mosaics
  - Spaces or viewing areas for art



- Participatory and Educational Art





- Fixed Art versus Temporary Art



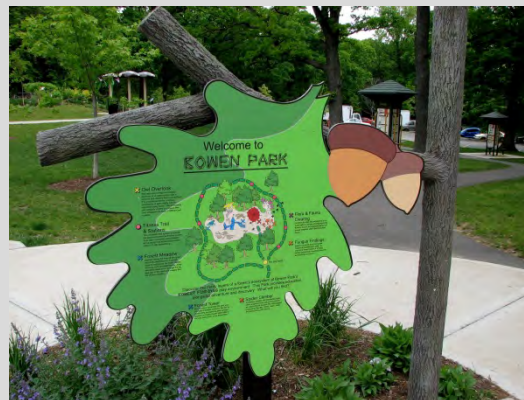
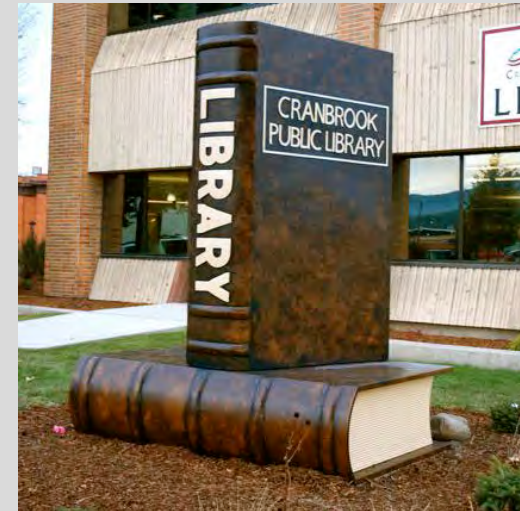


- Art as Monuments and Focal Points





- Art as Signage and Wayfinding





# Comments & Questions





# Next Steps

- Community Survey Input & Analysis
- Preliminary Environmental Review
- Draft Long Range Plan – two options



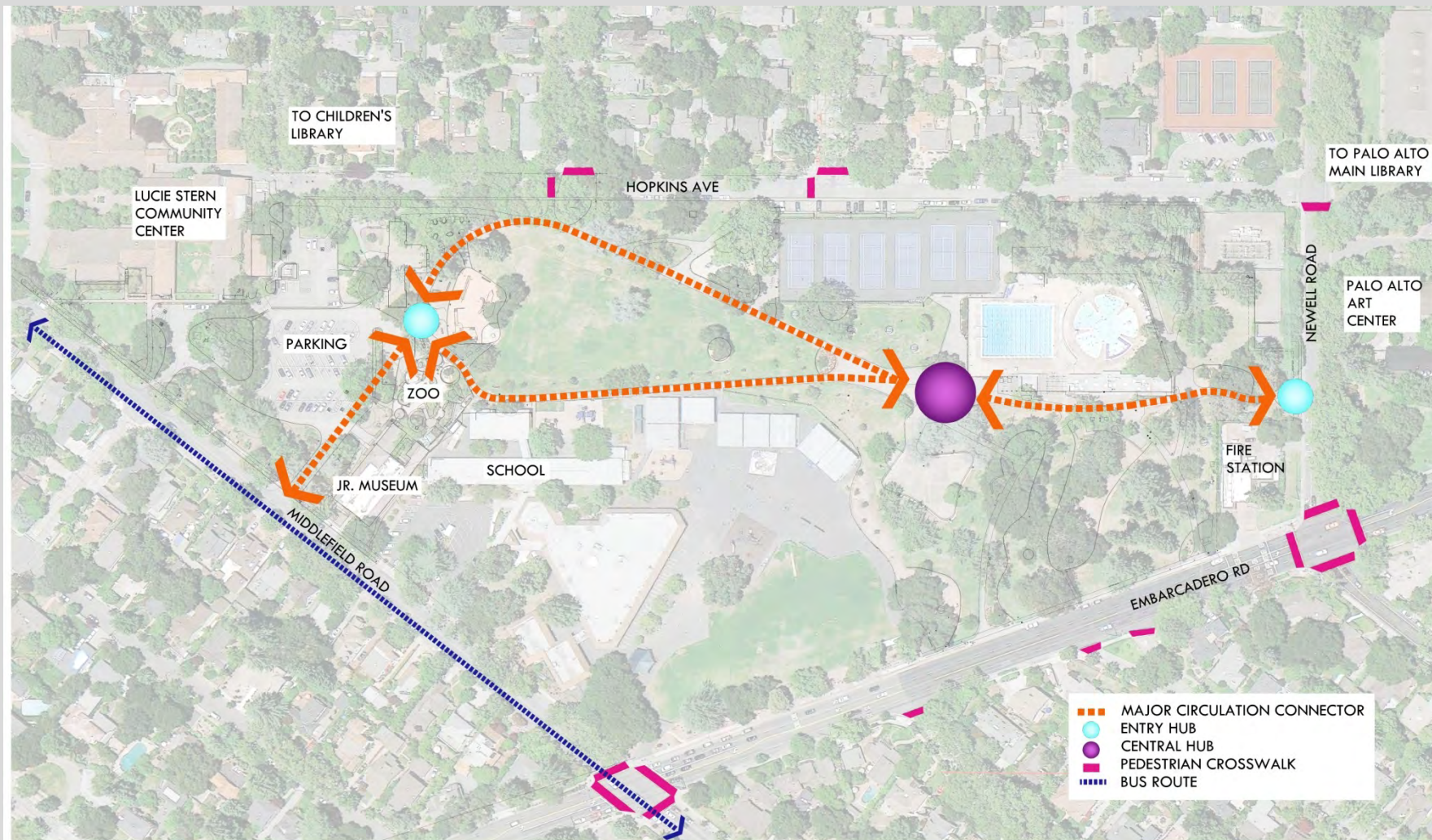


# Comments & Questions





# Circulation — Major Connector



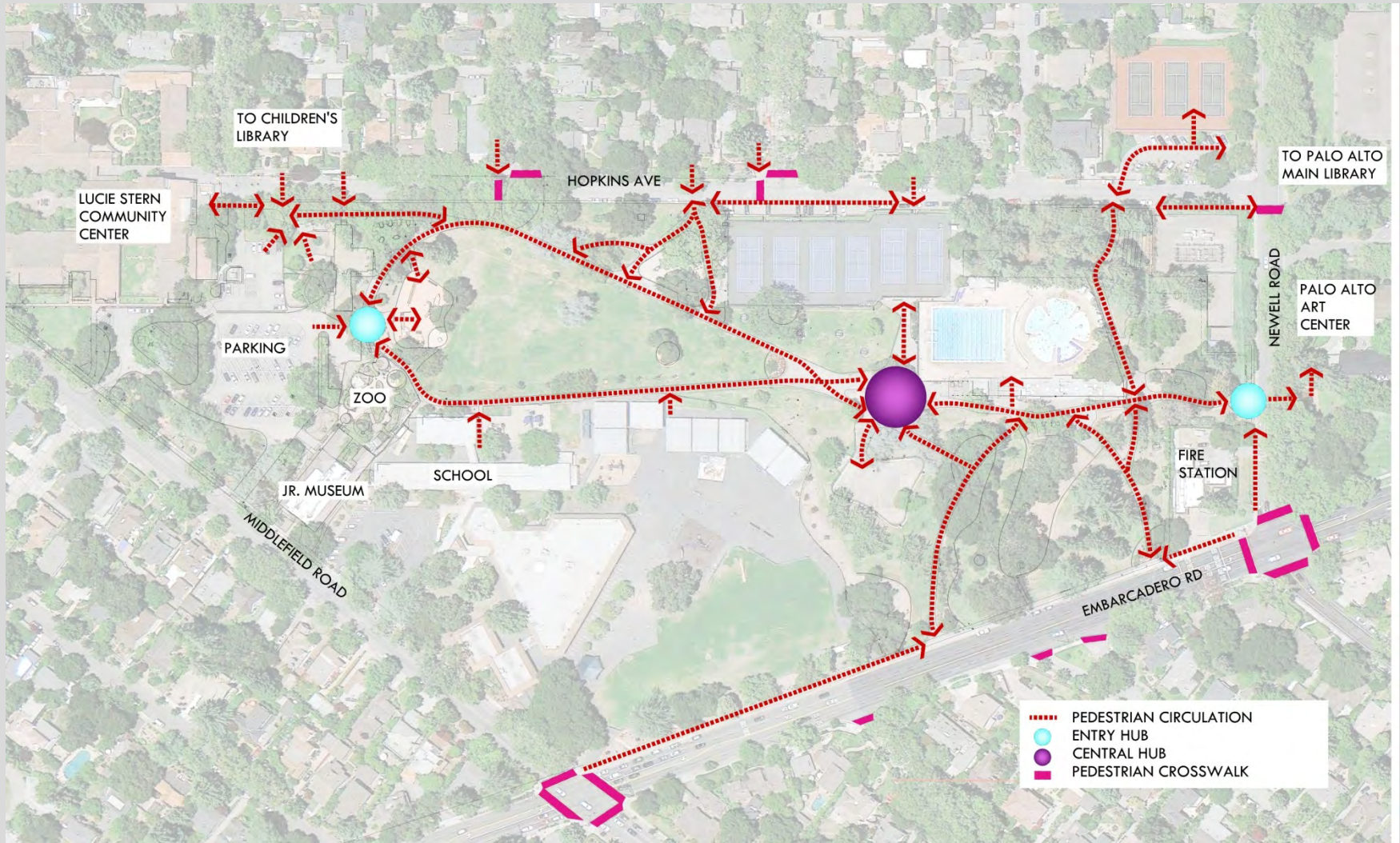


# Circulation – Secondary Connector



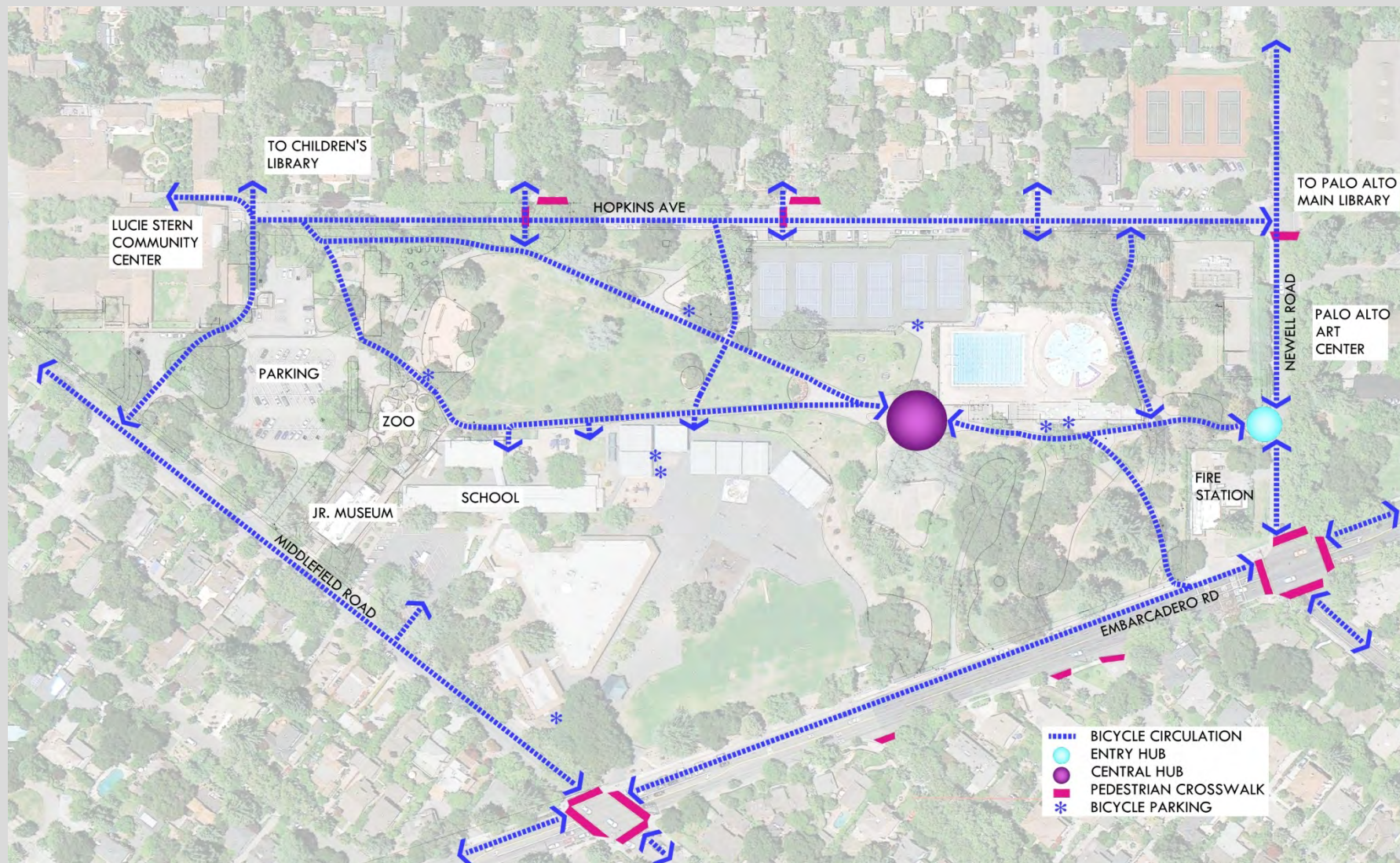


# Circulation – Pedestrian



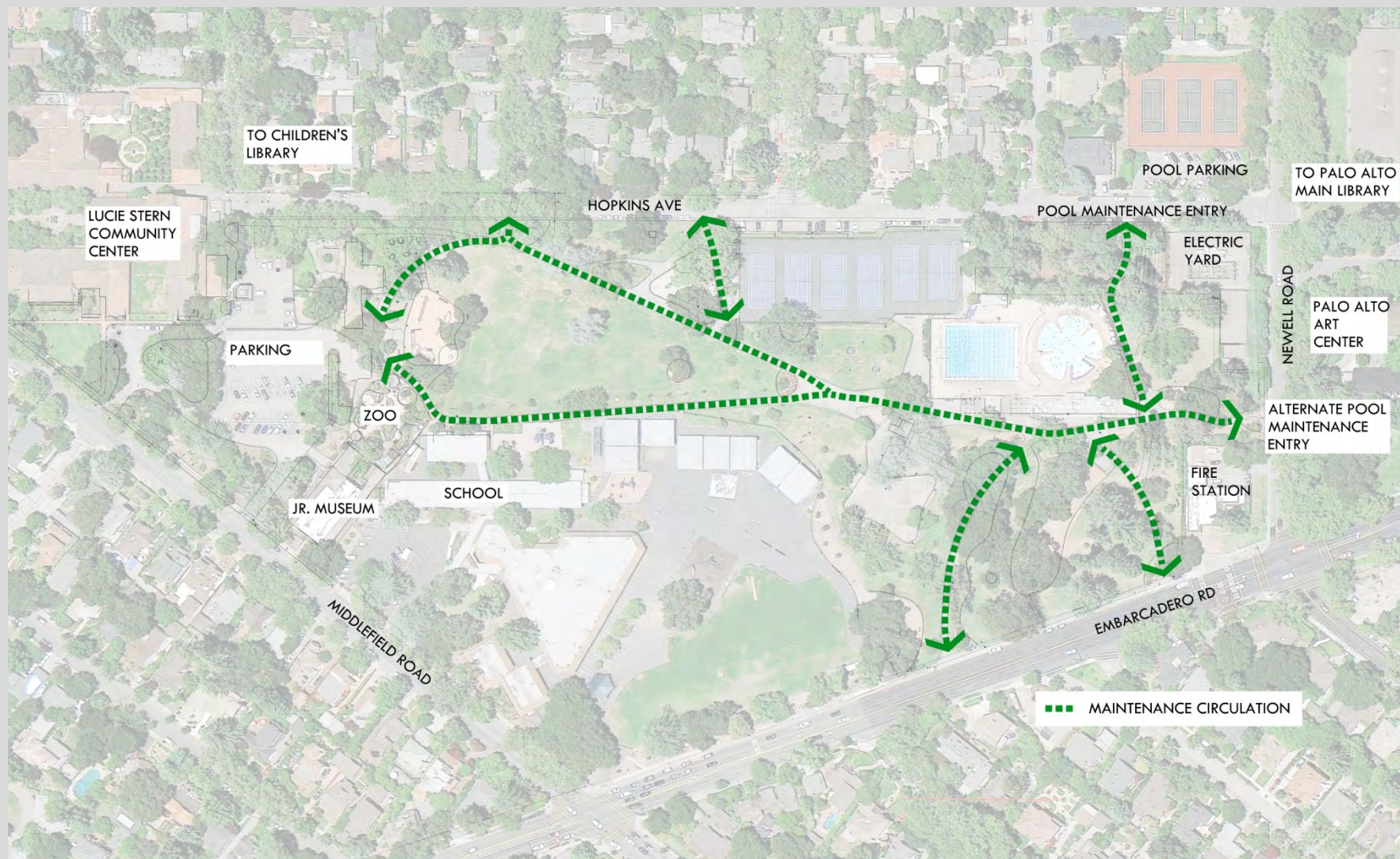


# Circulation – Bicycle



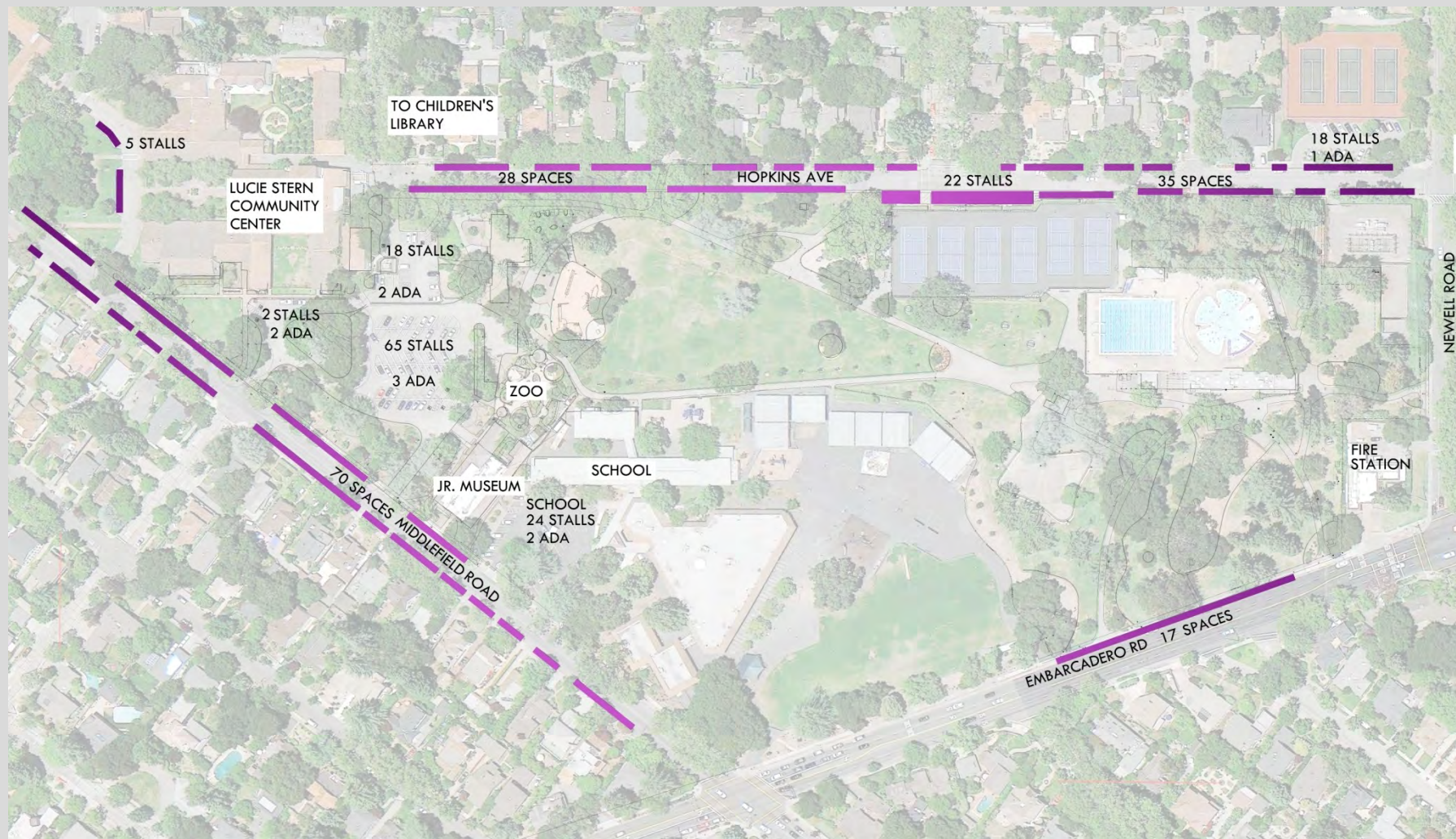


# Circulation – Maintenance/Service



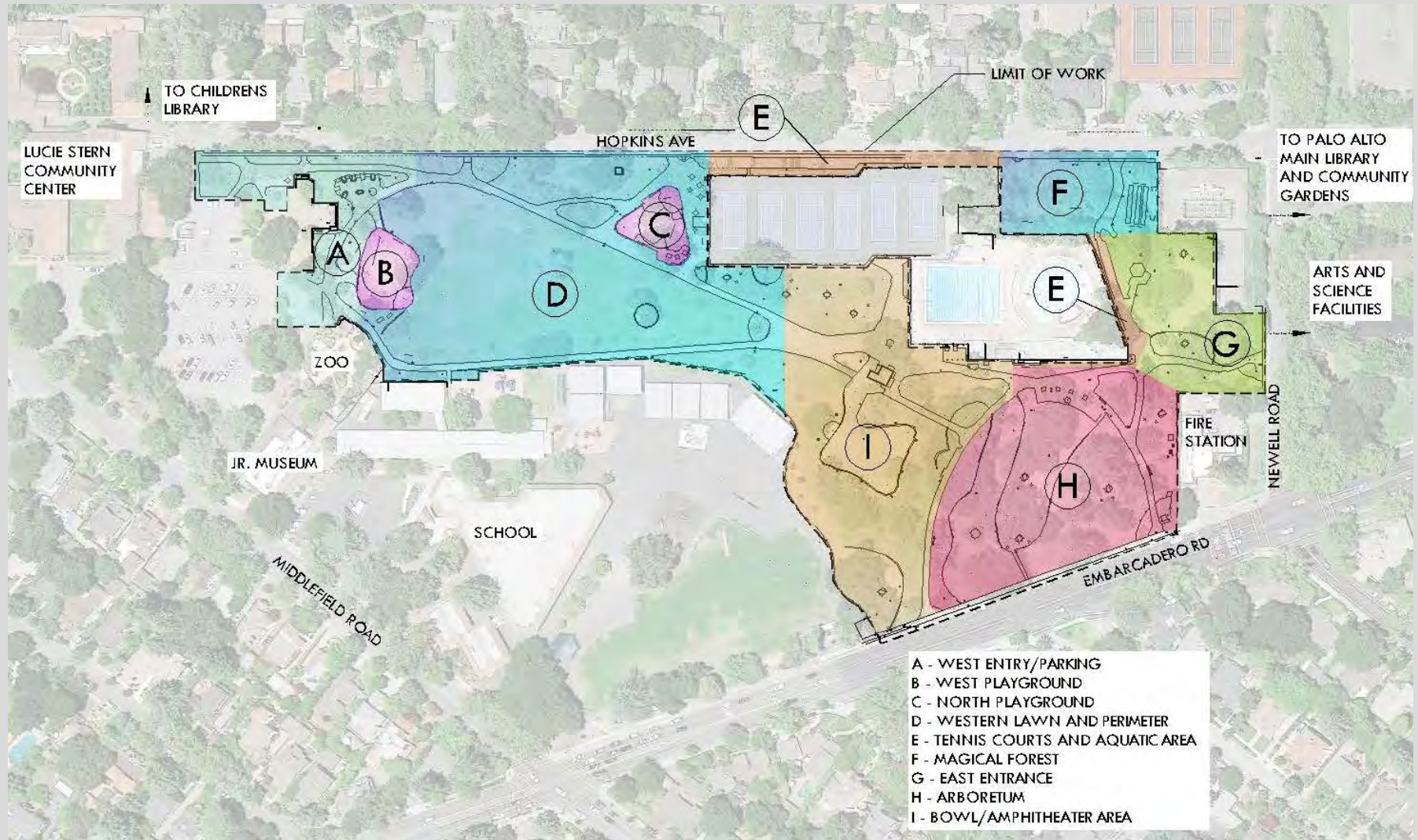


# Parking Analysis



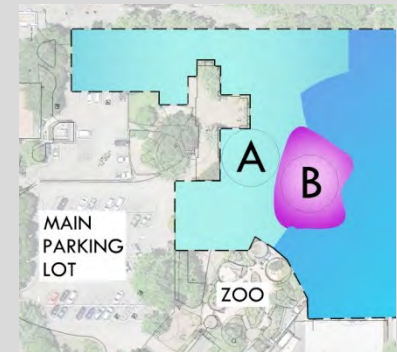


# Overall Site Analysis



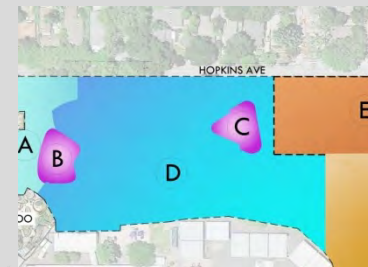


# Enlargements – Areas A and B





# Enlargements – Areas C and D





# Enlargements – Areas E, F and G





# Enlargements – Areas H and I

