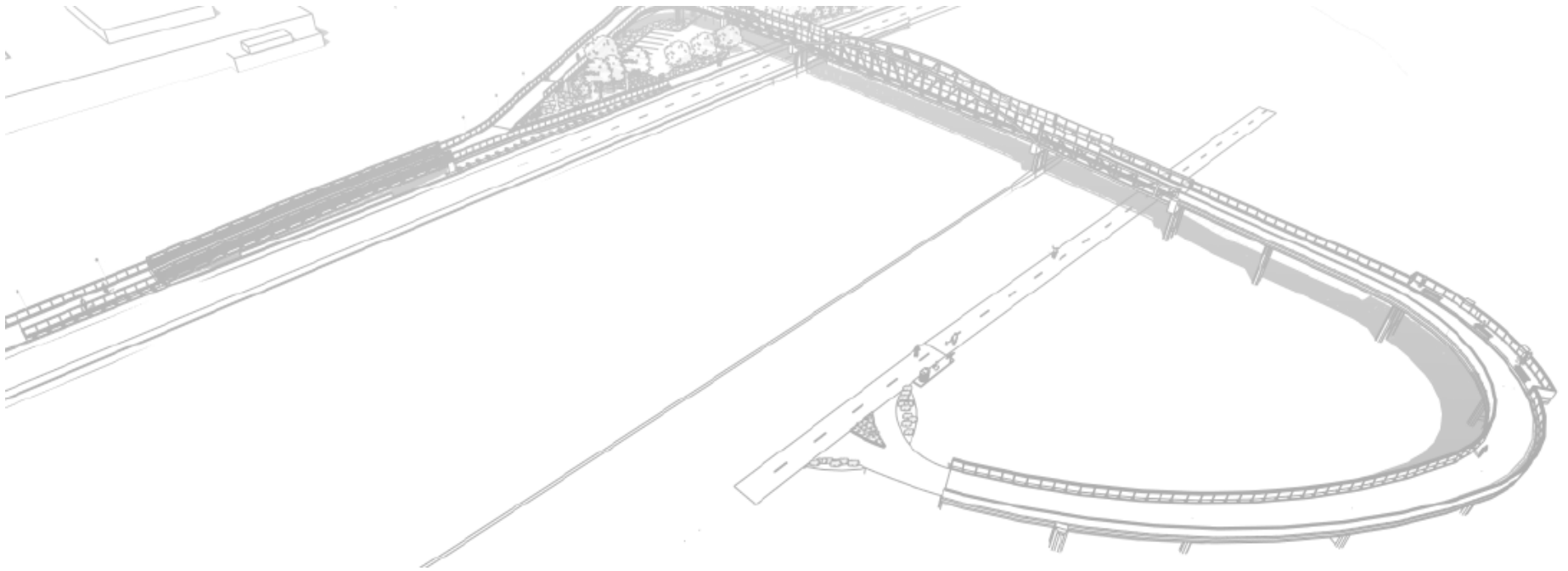


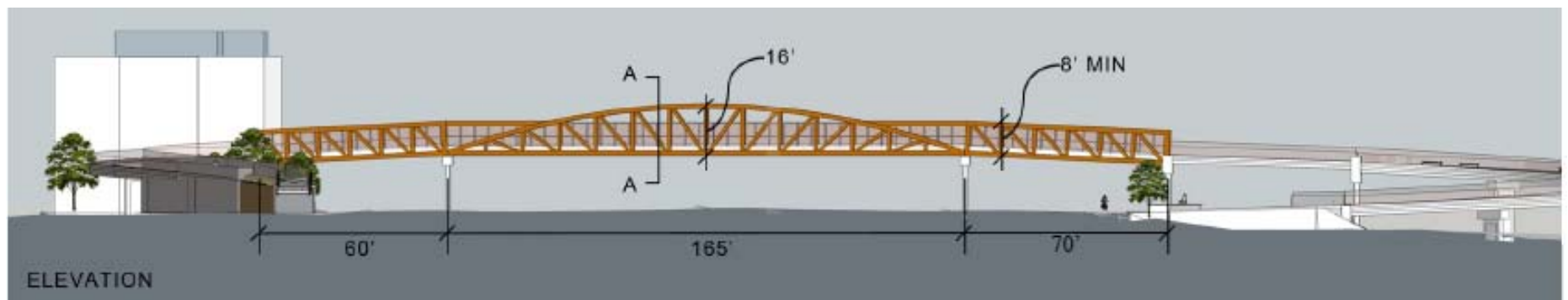
Highway 101 Bicycle/Pedestrian Overpass and Adobe Reach Trail

May 31, 2017



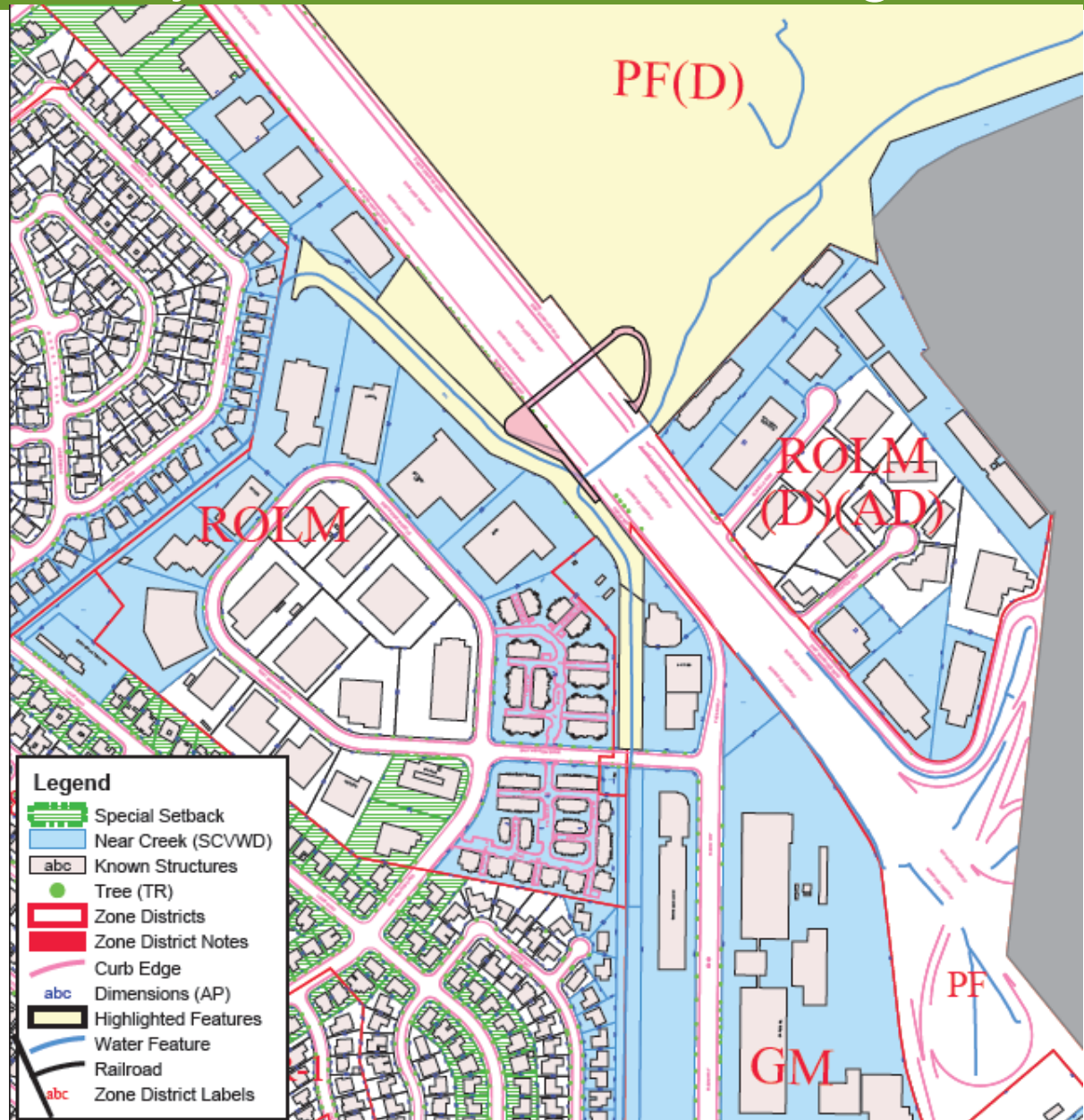
Project Overview: Location and Purpose

- Crosses Highway 101 between the East Oregon Expressway and San Antonio Road overcrossings
- Provides a year-round bicycle/pedestrian connection between commercial/residential uses west of Highway 101 and the walking/biking trails in the Baylands east of Highway 101
- Completes the Adobe Creek Reach Trail



Project Overview: Project Parcels With Zoning

- The project crosses four separate parcels within four distinct zoning districts
- The project site is zoned PF; PF(D); ROLM; and GM



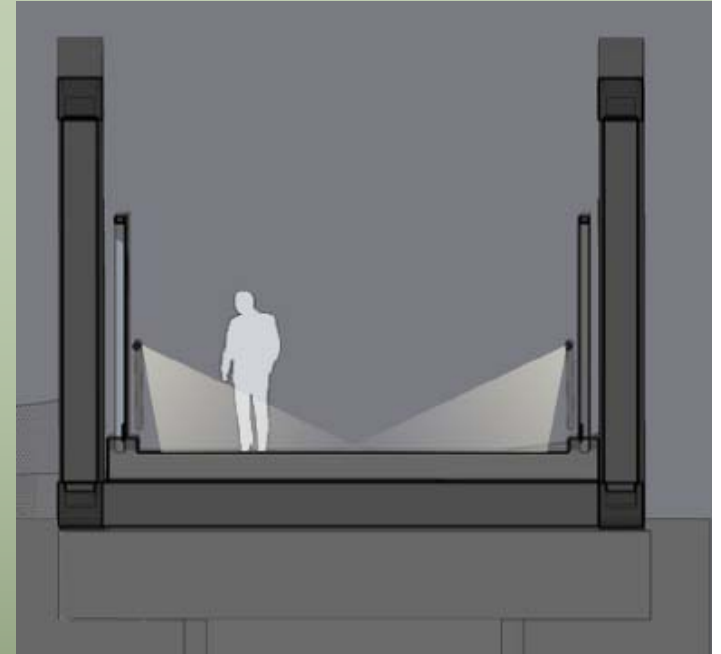
Process

- Through previous meetings/hearings Council has selected the alignment of the bridge, the type of structure, and budget
- The City's Public Works Engineering Division will refine the project based on ARB, PTC, and public input and formally apply for Site and Design review following this preliminary study session.



Requested Input from PTC

- Trail head refinements (at East Meadow Drive, East Bayshore Road, and West Bayshore Road)
- Addition/design of the overlook
- Landscaping
- Lighting
- Railing and fencing design
- type of signage (way finding/directional)
- Location of amenities (benches, drinking fountains, bike racks, trash receptacles)



Questions?

