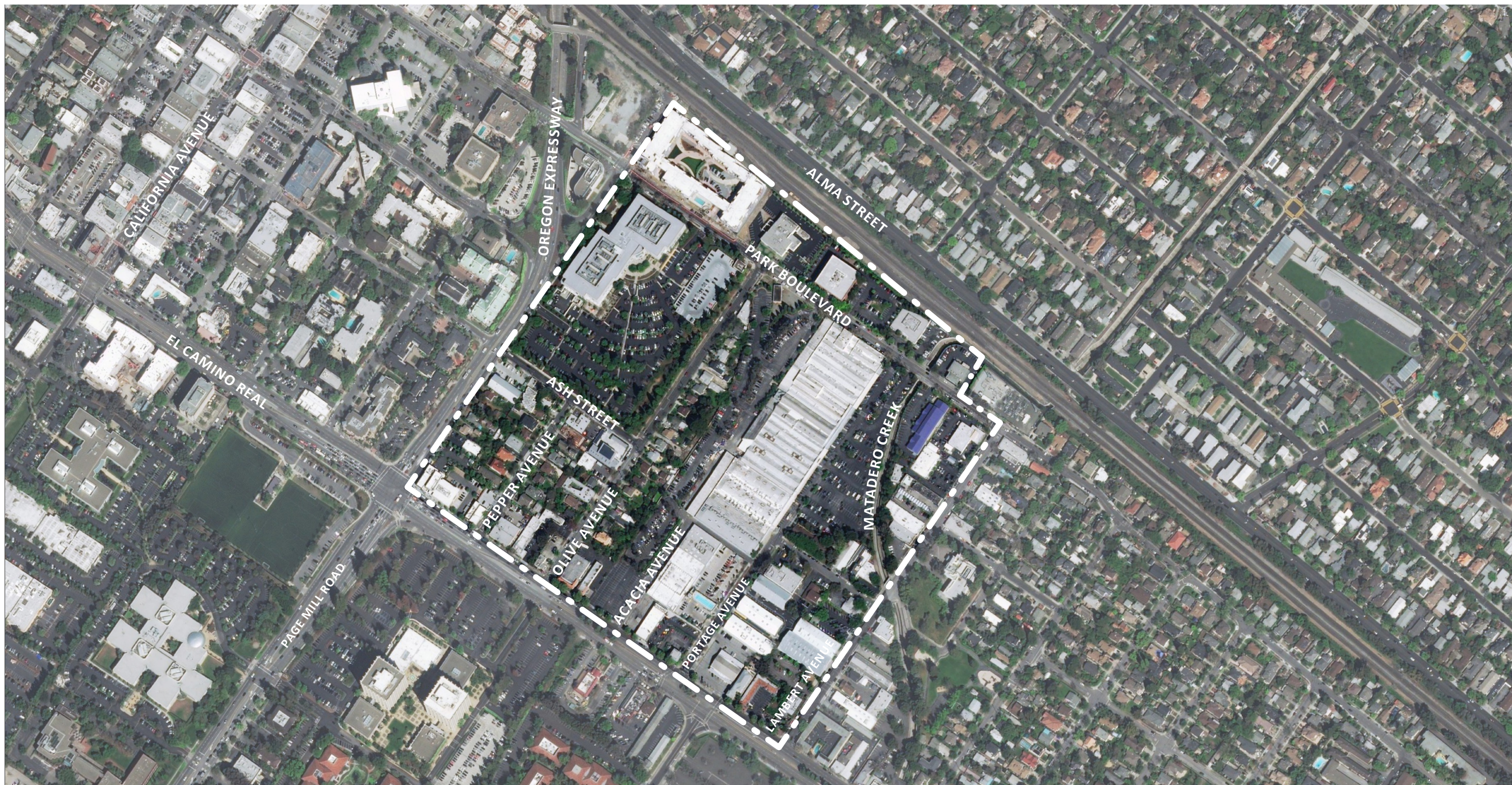




CITY OF PALO ALTO
North Ventura
COORDINATED AREA PLAN



WORKING GROUP EXERCISE: A DAY IN THE LIFE

Note: This is a prototype of the exercise that we also hope to do at the first community workshop. As you work through this exercise, consider ways that we should adapt it for an audience that may have less familiarity with the planning process and the site.



Introducing your new group member

How does Jamila/ John/ Jin/ Jose imagine the future NVCAP site? What do they need with respect to transit, open space, housing, and access to amenities to support their lifestyle?

1

JAMILA (28) works for a tech company in Mountain View with flexibility to work remotely. She bikes to Caltrain for work and generally prefers to bike everywhere she can. She volunteers for an organization that teaches coding to high school students, for which she occasionally needs to find community space. She lives on her own, but is hardly ever at home between work, hanging out with friends, and volunteering.

2

JOHN (70) has become an artist in his retirement. He has some motor limitations, and uses a wheelchair to get around. He loves to spend time with his 7-year-old granddaughter in the park, which he does at least one afternoon a week. When he isn't painting, he likes to read books at the library or meet friends at a café.

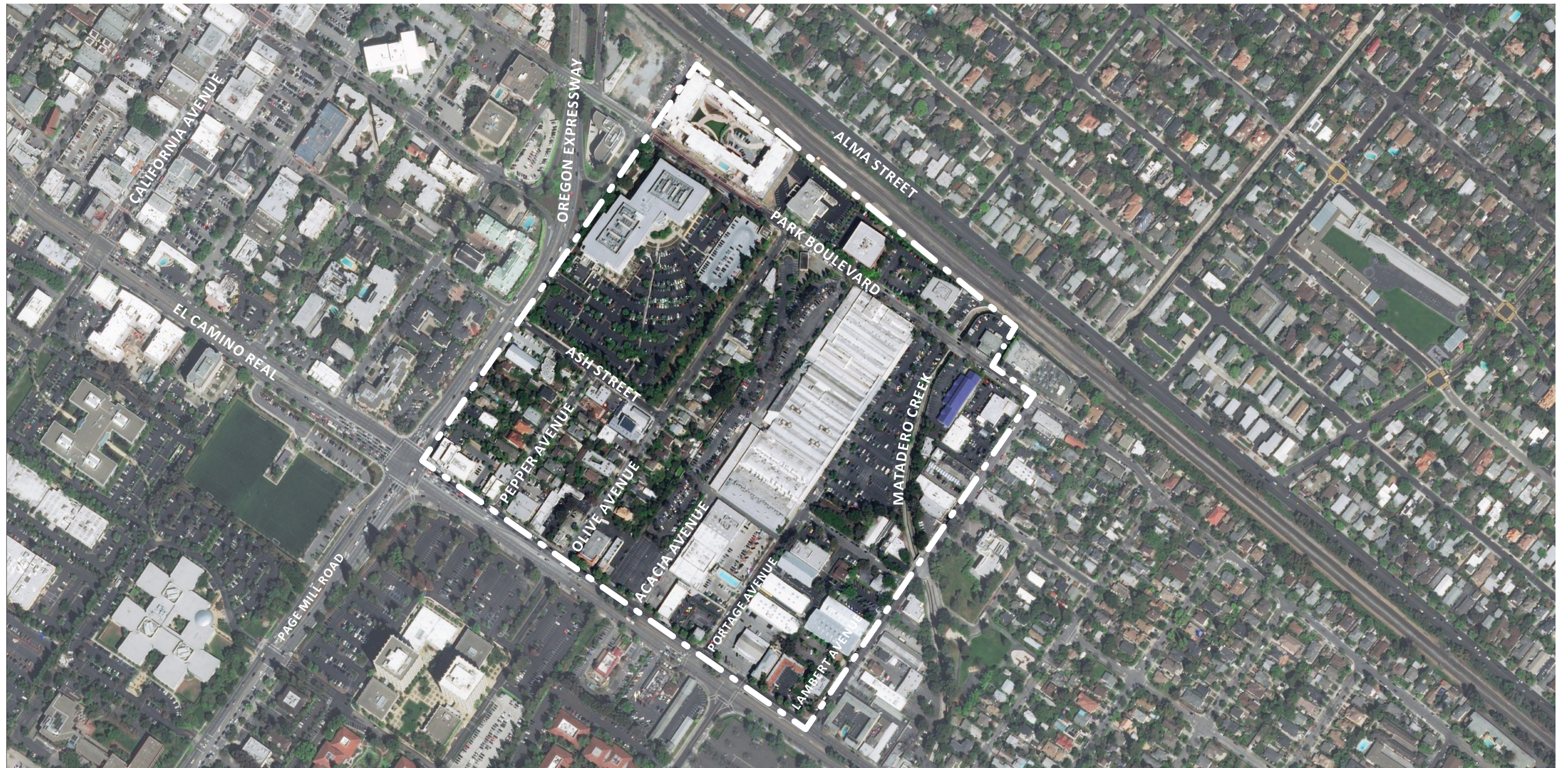
3

JIN (14) is a freshman at Palo Alto High school. She takes the bus home along El Camino Real, or walks if she misses the bus (about 30 minutes). She walks to California Ave on the weekend to hang out with friends, but wishes there were more to do as a teenager. She loves going to the movies and is learning to swing dance with some friends.

4

JOSE (45) is a researcher at Stanford Medical Center and drives to work. On week nights he usually runs errands and tries to play basketball at least once a week. On weekends he and his partner like to get a meal with friends and take their dog to the park.

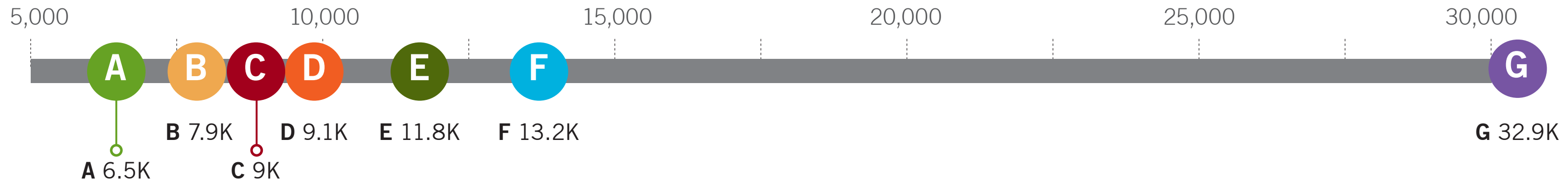
How do we envision the future NVCAP?





Population Density People/ Square Mile

What population density will support a vibrant and diverse community?



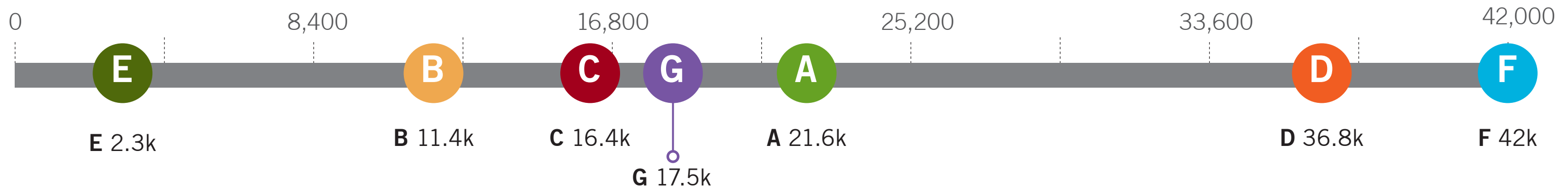
- *Consider a mix of ages, household composition (families, students, young professionals, retirees etc.), ethnic, and cultural backgrounds.*
- *What types of lifestyles might this area support?*
- *What makes you feel connected to the people in your community?*





Jobs Jobs / Square Mile

What is the right mix of jobs to support a thriving, diverse, and equitable economy for NVCAP?



- *What type of jobs are already represented here, what type might be added?*
- *What opportunities are there for supporting emerging artists, businesses, and entrepreneurs?*



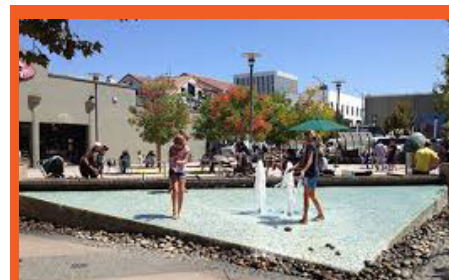
A NVCAP/ Cal Ave



B The Yards



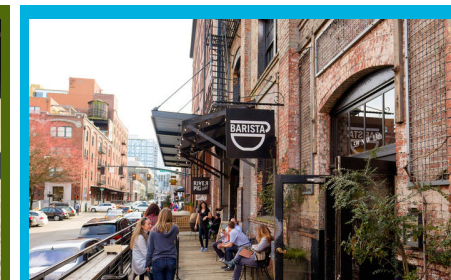
C Emeryville



D University Ave



E Oak Park



F Pearl District



G Central Square



Retail & Services

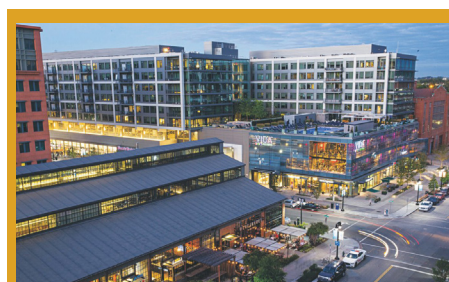
What services and retail might be needed to support NVCAP's residents, commuters, employees, and visitors?



- *Knowing that California Avenue is the main neighborhood retail hub, what retail or services might be appropriate for the NVCAP site?*
- *What amenities would be appropriate at the NVCAP site?*



A NVCAP/ Cal Ave



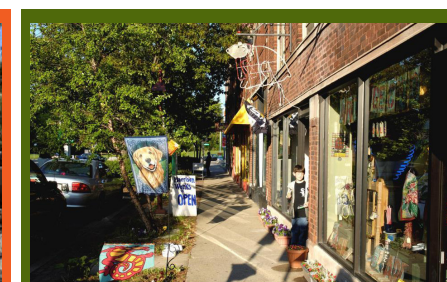
B The Yards



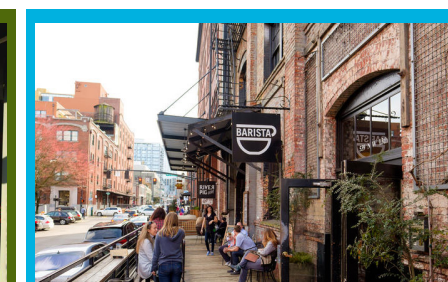
C Emeryville



D University Ave



E Oak Park



F Pearl District

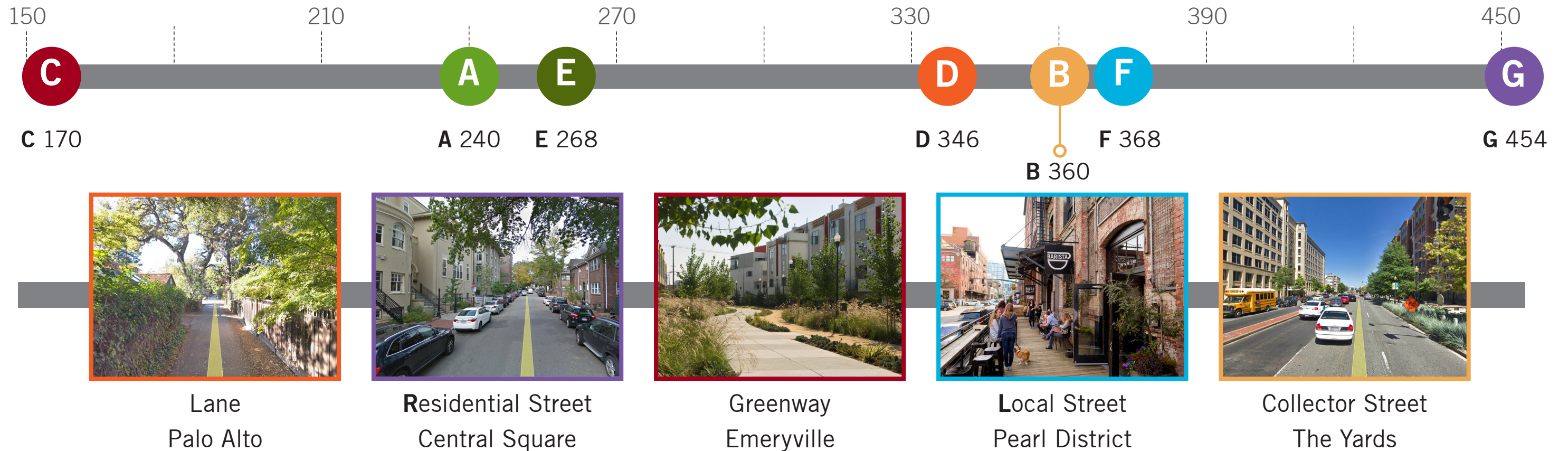


G Central Square

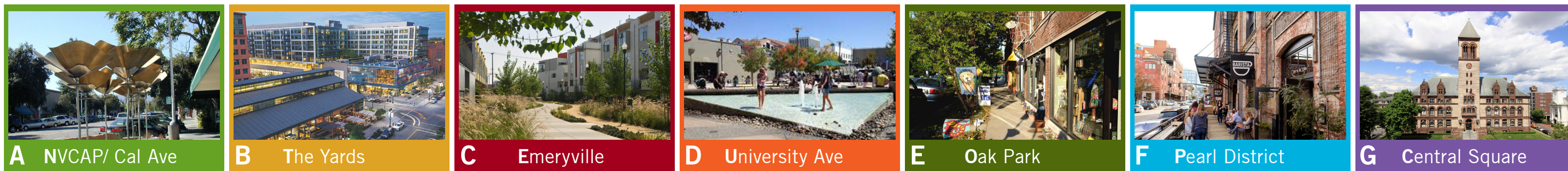


Intersection Density and Street Experience

What is the ideal intersection density to support a walkable neighborhood?



- *What are 3 important qualities of a street that contribute to a safe and interesting pedestrian experience?*
- *Identify 3 different types of streets from the case studies that best fit the NVCAP site? (For example: lanes, residential streets, greenways, local streets, and collector streets)*





Modes of Transit

Which modes of transit should be prioritized to create a connected and accessible neighborhood? (Rank 1 through 8, with 1 being the most important)



- *Consider transit at different times of day.*
- *Consider transit for different activities (commuting, shopping, visiting friends, and recreation).*
- *What is needed to support the top three modes you prioritized? (For example, bikes need bike parking, safe bike lanes, etc.)*



Open Space

What type of open space will best serve the future NVCAP community?



Linear Park



Linear Park



Linear Park



Central Park



Central Park



Urban Plaza

- *Consider a mix of use and users.*
- *Consider different times of use.*