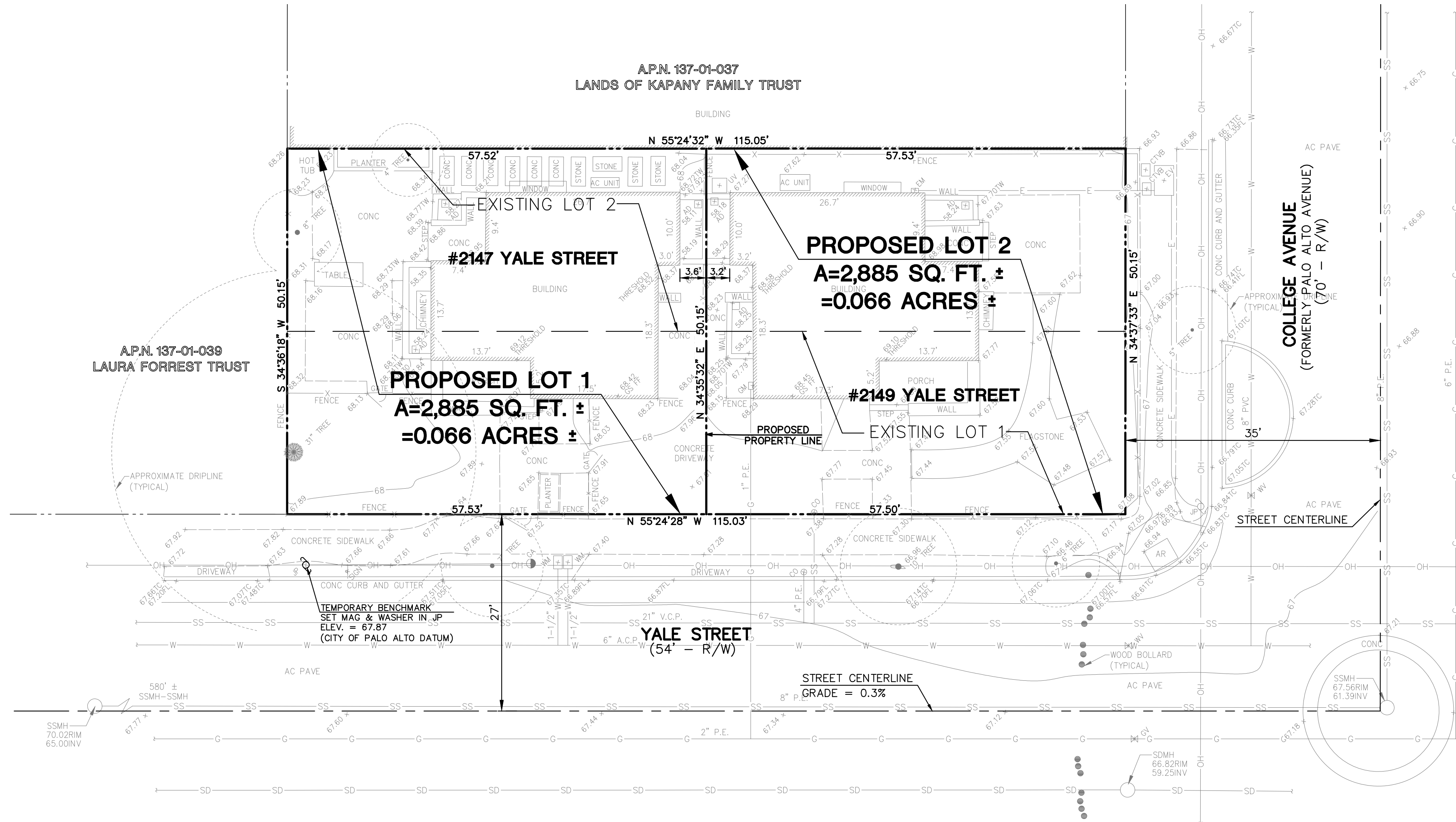


LEGEND:

AC PAVE	PROPERTY LINE
AD	ASPHALT CONCRETE PAVEMENT
AR	AREA DRAIN
CO	ACCESSIBLE RAMP
CONC	CLEANOUT
CTVB	CABLE TELEVISION BOX
EM	CONCRETE
EV	ELECTRIC METER
FL	ELECTRIC VAULT
GA	FLOWLINE
GM	GUY ANCHOR
GS FF	GAS METER
GV M	GARAGE SLAB FINISH FLOOR
INV	GAS VALVE
JP	INVERT
PL	JOINT UTILITY POLE
SDMH	PROPERTY LINE
SSMH	STORM DRAIN MANHOLE
TC	SANITARY SEWER MANHOLE
TW	TOP OF CURB
UV	TOP OF WALL
WM	UTILITY VAULT
WV M	WATER METER
	WATER VALVE
	TREE W/ SIZE
	FENCE
	ELECTRIC LINE
	GAS LINE
	OVERHEAD UTILITY LINE
	SANITARY SEWER LINE
	STORM DRAIN LINE
	WATER LINE



OWNERS:

GELMAN TRUST, 2147 YALE STREET, PALO ALTO, 94306
GRIFFITH AND LI TRUST, 2149 YALE STREET, PALO ALTO, 94306

SUBDIVIDER:

MCB REMODELING, LLC
C/O KATHRYNE E. GELMAN
1300 INDUSTRIAL ROAD, SUITE 14
SAN CARLOS, CA 94070

CIVIL ENGINEER / LAND SURVEYOR:

MacLEOD AND ASSOCIATES
965 CENTER STREET
SAN CARLOS, CA 94070
TEL. (650) 593-8580
DAN MacLEOD
dmacleod@macleodassociates.net

ASSESSOR'S PARCEL NO.

137-01-038

EXISTING PARCEL SIZE:

± 5,770 SQ. FT.
± 0.132 ACRES

PROPOSED LOT SIZES:

LOT 1 = 2,885 S.F.
LOT 2 = 2,885 S.F.

AVG. LOT SIZE = 2,885 S.F.
SMALLEST LOT SIZE = 2,885 S.F.

EXISTING BUILDING NOTE:

ALL EXISTING BUILDINGS ARE TO REMAIN.

BASIS OF BEARING:

THE BEARING OF NORTH 55°24'28" WEST TAKEN ON THE CENTERLINE OF YALE STREET AS SHOWN UPON THAT CERTAIN RECORD OF SURVEY FILED IN BOOK 845 OF MAPS AT PAGE 29, OFFICIAL RECORDS OF SANTA CLARA COUNTY, WAS TAKEN AS THE BASIS OF ALL BEARINGS SHOWN HEREON.

UTILITY NOTE:

THE UTILITIES EXISTING ON THE SURFACE AND SHOWN ON THIS DRAWING HAVE BEEN LOCATED BY FIELD SURVEY. ALL UNDERGROUND UTILITIES SHOWN ON THIS DRAWING ARE FROM RECORDS OF THE VARIOUS UTILITY COMPANIES AND THE SURVEYOR/ENGINEER DOES NOT ASSUME RESPONSIBILITY FOR THEIR COMPLETENESS, INDICATED LOCATION, OR SIZE. RECORD UTILITY LOCATION SHOULD BE CONFIRMED BY EXPOSING THE UTILITY.

ELEVATION DATUM:

ALL ELEVATIONS ARE REFERENCED TO CITY OF PALO ALTO DATUM - NGVD29

SUBDIVIDERS STATEMENT:

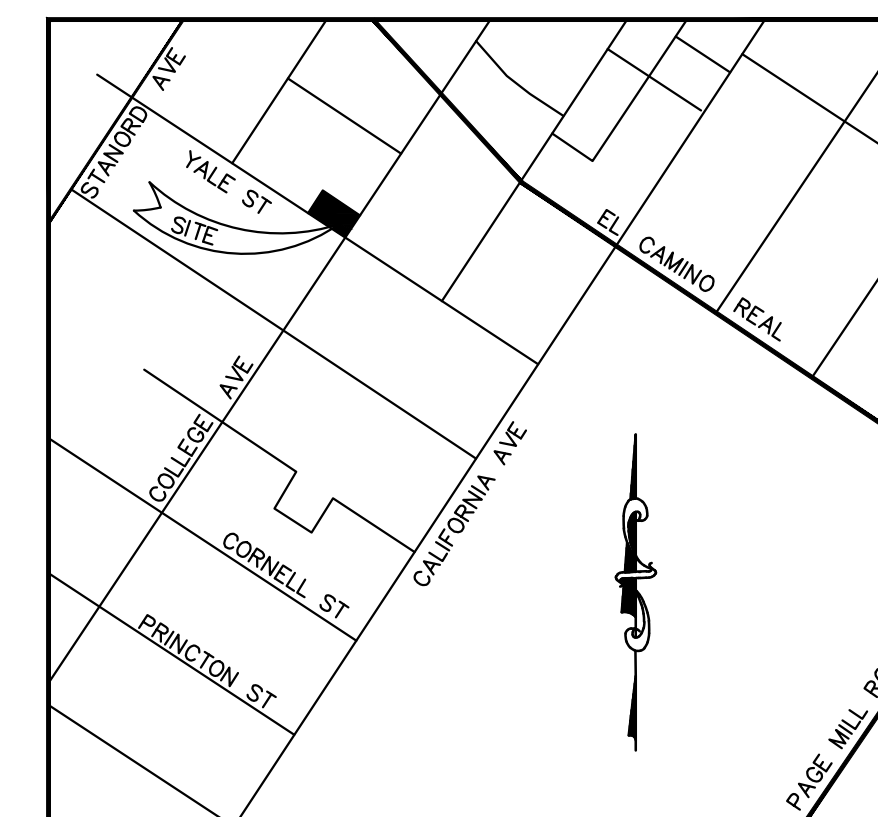
SUBMITTED BY SEPARATE DOCUMENT

FLOOD ZONE:

ZONE "X"

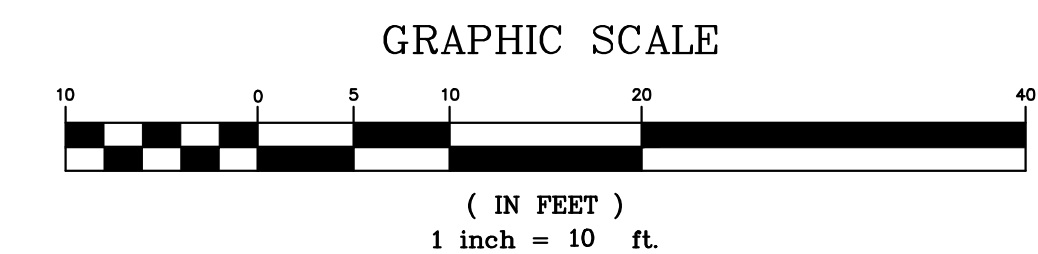
UTILITIES SERVICES:

WATER: CITY OF PALO ALTO
SANITARY SEWER: CITY OF PALO ALTO
GAS & ELECTRICAL: CITY OF PALO ALTO
TELEPHONE: AT&T
FIRE: CITY OF PALO ALTO



VICINITY MAP

(NOT TO SCALE)



DATE:	
BY:	
DESCRIPTION:	
REV:	
MACLEOD AND ASSOCIATES	
CIVIL ENGINEERING • LAND SURVEYING	
965 CENTER STREET • SAN CARLOS, CA 94070 • (650) 593-8580	
PREPARED FOR:	KATHRYN GELMAN
PRELIMINARY PARCEL MAP WITH EXCEPTIONS FOR SUBDIVISION PURPOSES (2 LOTS)	
	2147 & 2149 YALE STREET
	LOTS 1 & 2, BLOCK 48,
	"E" MAPS 121 "COLLEGE TERRACE"
	PALO ALTO SANTA CLARA COUNTY CALIFORNIA
DRAWN BY:	DJK
DESIGNED BY:	---
CHECKED BY:	DGM
SCALE:	1"=10'
DATE:	10/10/22
DRAWING NO.	5268-TM
SHEET	1 OF 1