

20 May 2019

Garrett Sauls, Associate Planner
Development Center
285 Hamilton Avenue Palo Alto CA 94301
garrett.sauls@cityofpaloalto.org

Received

MAY 20 2019

Department of Planning
& Community Environment

Dear Garrett:

Please except this letter as our request for review by City Council of the proposed land lease to Little League Baseball of Palo alto, Inc. (PALL) for a portion of the property adjacent to 3672 Middlefield Rd.

We are requesting City Council consider a formal lease to the organization for a strip of land which has long been occupied by PALL but is currently part of a Palo Alto utility yard. Ultimately, this lease will facilitate a long needed and community requested series of improvements to the PALL property. Ultimately, we are seeking to construct a modest field house to allow indoor batting practice throughout the year. Other improvements we are considering include replacement of the clubhouse with accessible restrooms, reconstruction of the dugouts, new bleachers, reconfigured parking, and a new outfield activity area to allow for picnics and team meetings.

To date, we have had a few exploratory meetings which included City representatives from Utilities, Real Estate, Planning, and the City Manager's office. As a result of those initial conversations, it seems there may be a possibility to allow for PALL use of this land through a long-term land lease. At this stage, we would ask City Council to provide some direction regarding feasibility of this request.

We understand Council agendas are busy but would hope we can be placed on an agenda early in the fall.

Thank you.

Best,



Randy Popp, Architect



MIDDLE FIELD ROAD 60' R/W

OFFSET +/-
12" FROM
EXIST.
FENCE
LINE

EXIST.
BATTING
CAGE

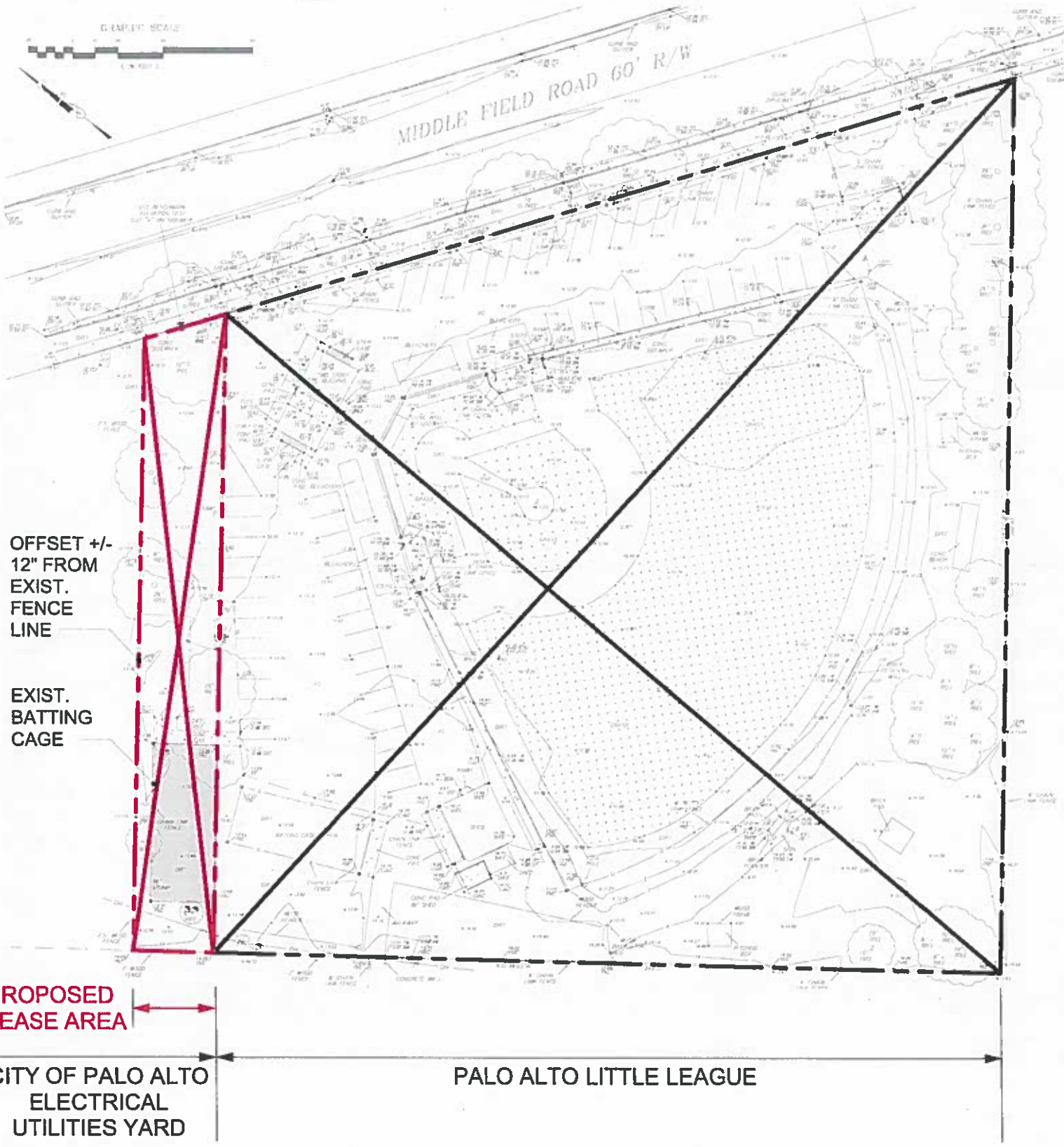
PROPOSED
LEASE AREA

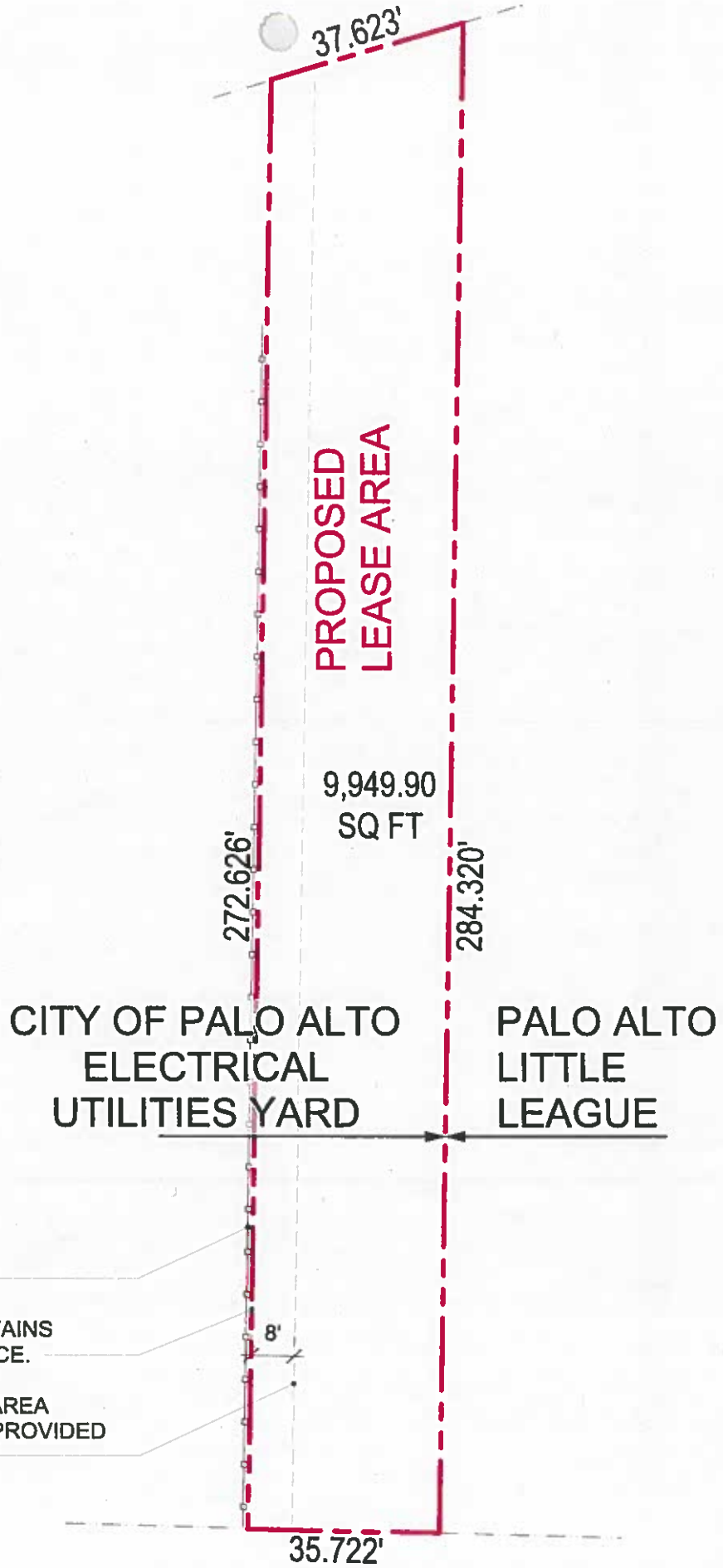
CITY OF PALO ALTO
ELECTRICAL
UTILITIES YARD

PALO ALTO LITTLE LEAGUE

PALO ALTO LITTLE LEAGUE
3672 Middlefield Road

SITE BOUNDARY DIAGRAM
1"=60'





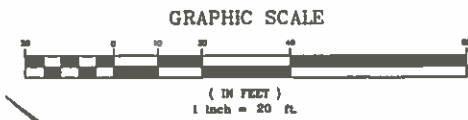
CURRENT FENCE LINE IS NOT STRAIGHT.

SUGGESTED BOUNDARY OF LEASE AREA MAINTAINS APPROXIMATELY 4"-12" OF CLEARANCE TO FENCE.

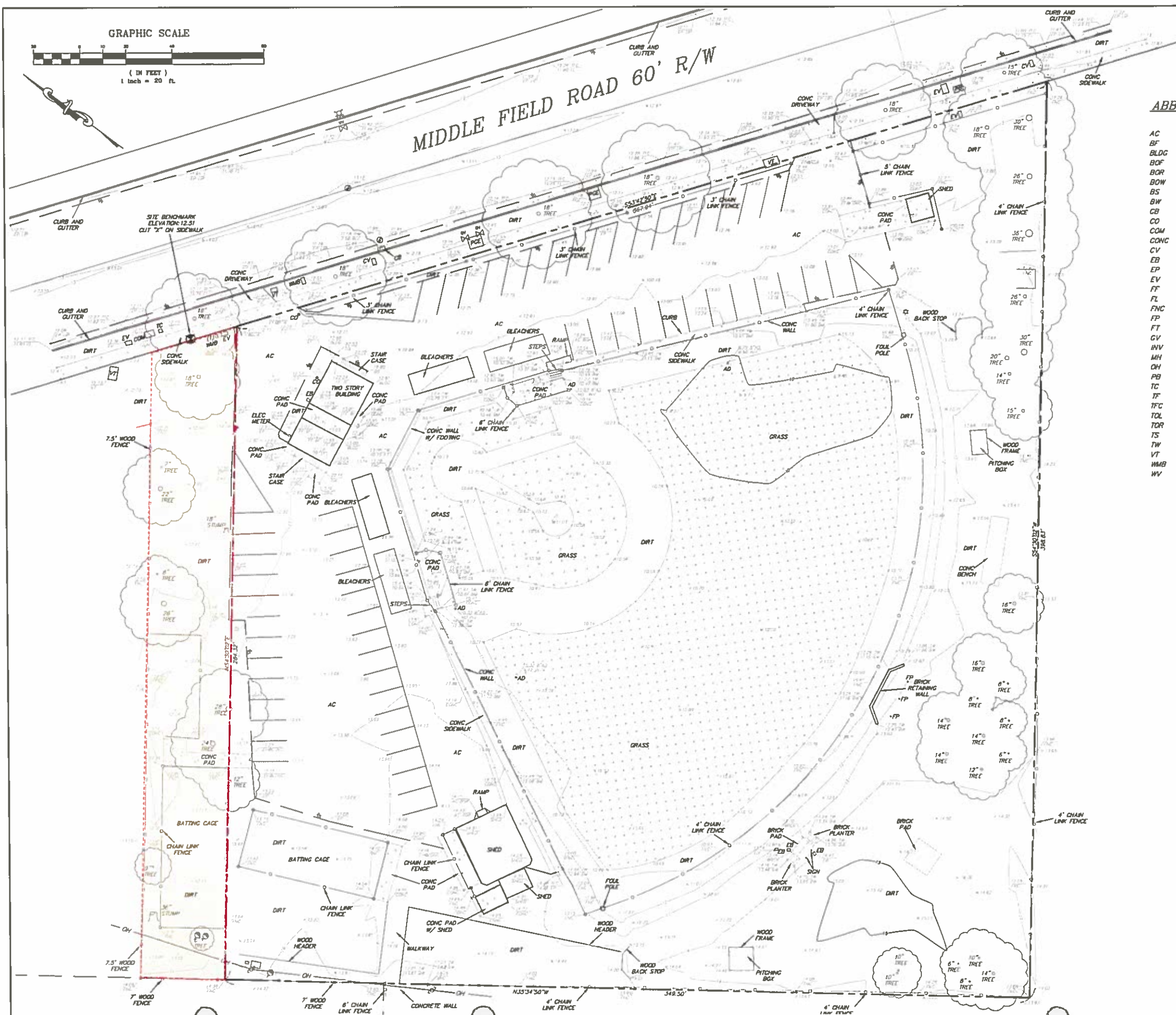
MINIMUM 8' SIDE YARD SETBACK FROM LEASE AREA BOUNDARY TO ANY NEW STRUCTURE WILL BE PROVIDED FOR ANY FUTURE IMPROVEMENTS.

PALO ALTO LITTLE LEAGUE
3672 Middlefield Road

APPROX. PROPOSED LEASE AREA
1"=30'



MIDDLE FIELD ROAD 60' R/W

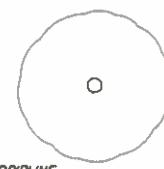


ABBREVIATIONS:

- AC ASPHALT/CONCRETE
- BF BOTTOM FLOOR
- BLDG BUILDING
- BOF BOTTOM OF FLARE
- BOR BOTTOM OF RAMP
- BOW BACK OF WALK
- BS BOTTOM STAIR
- BW BOTTOM OF WALL
- CB CATCH BASIN
- CO CLEAN OUT
- COM COMMUNICATION VAULT
- CONC CONCRETE
- CV CABLE VAULT
- EB ELECTRIC BOX
- EP EDGE OF PAVEMENT
- EV ELECTRIC VAULT
- FF FINISH FLOOR
- FL FLOW LINE
- FNC FENCE
- FP FLAG POLE
- FT FOOTING
- GV GAS VALVE
- INV INVERT
- MH MANHOLE
- OH OVERHEAD POWER LINES
- PB PACIFIC BELL
- TC TRAFFIC CONTROL
- TF TOP FLOOR
- TFC TOP FACE CURB
- TOL TOP OF LANDING
- TOR TOP OF RAMP
- TS TOP STAIR
- TW TOP OF WALL
- VT VAULT
- WMB WATER METER BOX
- WV WATER VALVE

LEGEND:

- PROPERTY LINE
- - - EASEMENT LINE
- RIGHT OF WAY
- OVER HEAD UTILITY LINES
- EDGE OF PAVEMENT
- FLOW LINE
- WOOD FENCE
- CHAIN LINK FENCE
- POWER POLE
- GUY WIRE
- BENCHMARK
- WATER VALVE
- GAS VALVE
- SPOT ELEVATION



NOTE: ACTUAL TREE TRUNK LOCATIONS ARE SHOWN. DRILINES SHOWN ARE ONLY APPROXIMATE. DRILINES IN AREAS OF PROPOSED CONSTRUCTION SHOULD BE FIELD VERIFIED.

NOTES:

PREPARED FOR PALO ALTO LITTLE LEAGUE

BENCHMARK NOTE:

ELEVATIONS BASED ON USGS FEMA FOR CITY OF PALO ALTO. REFERENCE MARK: RM 5 = "X" ON TOP OF FIRE HYDRANT ON SOUTHEAST CORNER OF THE INTERSECTION OF EAST CHARLESTON ROAD AND MIDDLEFIELD ROAD. REFERENCE MARK ELEVATION = 15.34' SITE BENCHMARK ELEVATION = 12.51'

IF UNDERGROUND UTILITIES, ZONE, SETBACK AND STREET WIDENING DATA ARE SHOWN HEREON, IT IS FOR INFORMATION ONLY, HAVING BEEN OBTAINED FROM AVAILABLE SOURCES NOT CONNECTED WITH THIS CORPORATION. THEREFORE, NO GUARANTEE IS MADE AS TO THE ACCURACY OR COMPLETENESS OF SAID INFORMATION.

I HEREBY STATE THAT I AM A LICENSED ENGINEER OF THE STATE OF CALIFORNIA, THAT THIS MAP CORRECTLY REPRESENTS A SURVEY MADE UNDER MY SUPERVISION IN SEPTEMBER 2017, AND THAT PROPERTY LINES SHOWN HEREON ARE COMPILED FROM RECORD DATA AND A BOUNDARY RETRACEMENT SURVEY, AND THAT THIS MAP DOES NOT INCLUDE EASEMENTS EXCEPT THOSE SPECIFICALLY DELINEATED HEREON.



TOPOGRAPHIC SURVEY
 3672 MIDDLEFIELD ROAD
 LITTLE LEAGUE BASEBALL OF PALO ALTO

triad/holmes assoc.
 civil engineering
 surveying
 public works
 land development

211001
 211002
 211003
 211004
 211005
 211006
 211007
 211008
 211009
 211010
 211011
 211012
 211013
 211014
 211015
 211016
 211017
 211018
 211019
 211020
 211021
 211022
 211023
 211024
 211025
 211026
 211027
 211028
 211029
 211030
 211031
 211032
 211033
 211034
 211035
 211036
 211037
 211038
 211039
 211040
 211041
 211042
 211043
 211044
 211045
 211046
 211047
 211048
 211049
 211050

Copyright (C) 2007 by Triad/Holmes Associates
 All Rights Reserved. This Document is intended for use only for the Project Specified in the Title Block. Any Reproduction or Use of this Document without the Express Written Consent of Triad/Holmes Associates is prohibited.

| REVISIONS | BY |
|------------|--------------|
| 08/28/17 | MIN |
| BOUNDARY | |
| DATE | 08/15/08 |
| SCALE | 1" = 20' |
| DRAWN BY | DH/KA |
| NO. IN SET | 09-1411 |
| PROJECT | 09-1411 TOPO |
| SHEET | 1 |
| OF | 1 SHEETS |