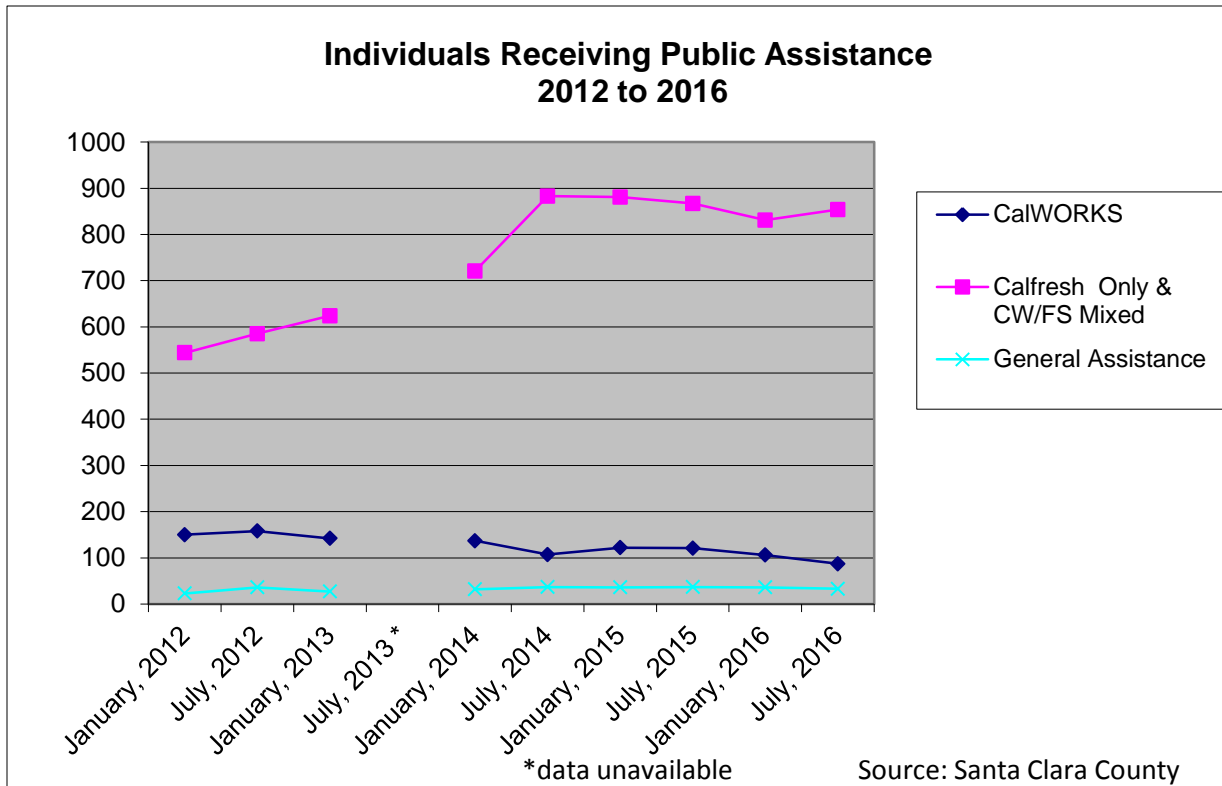


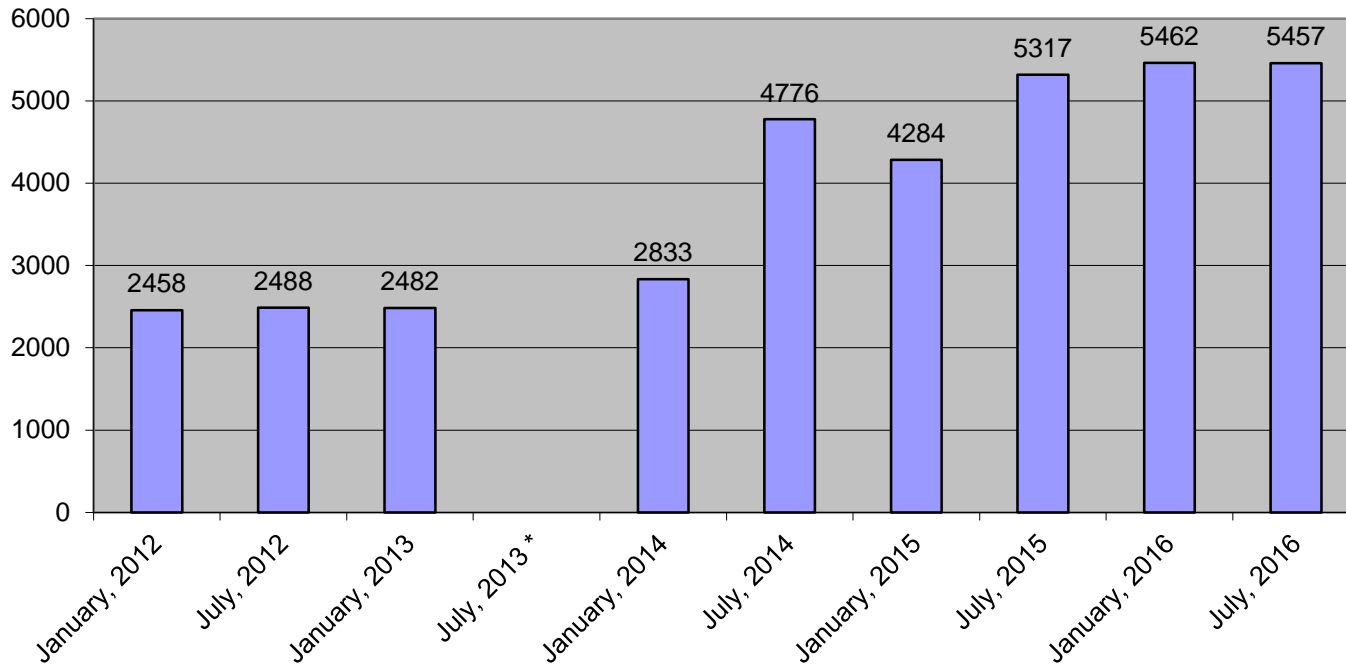
# Demographic Information For Human Relations Commission Meeting

## Thursday, November 10, 2016

### Attachment B



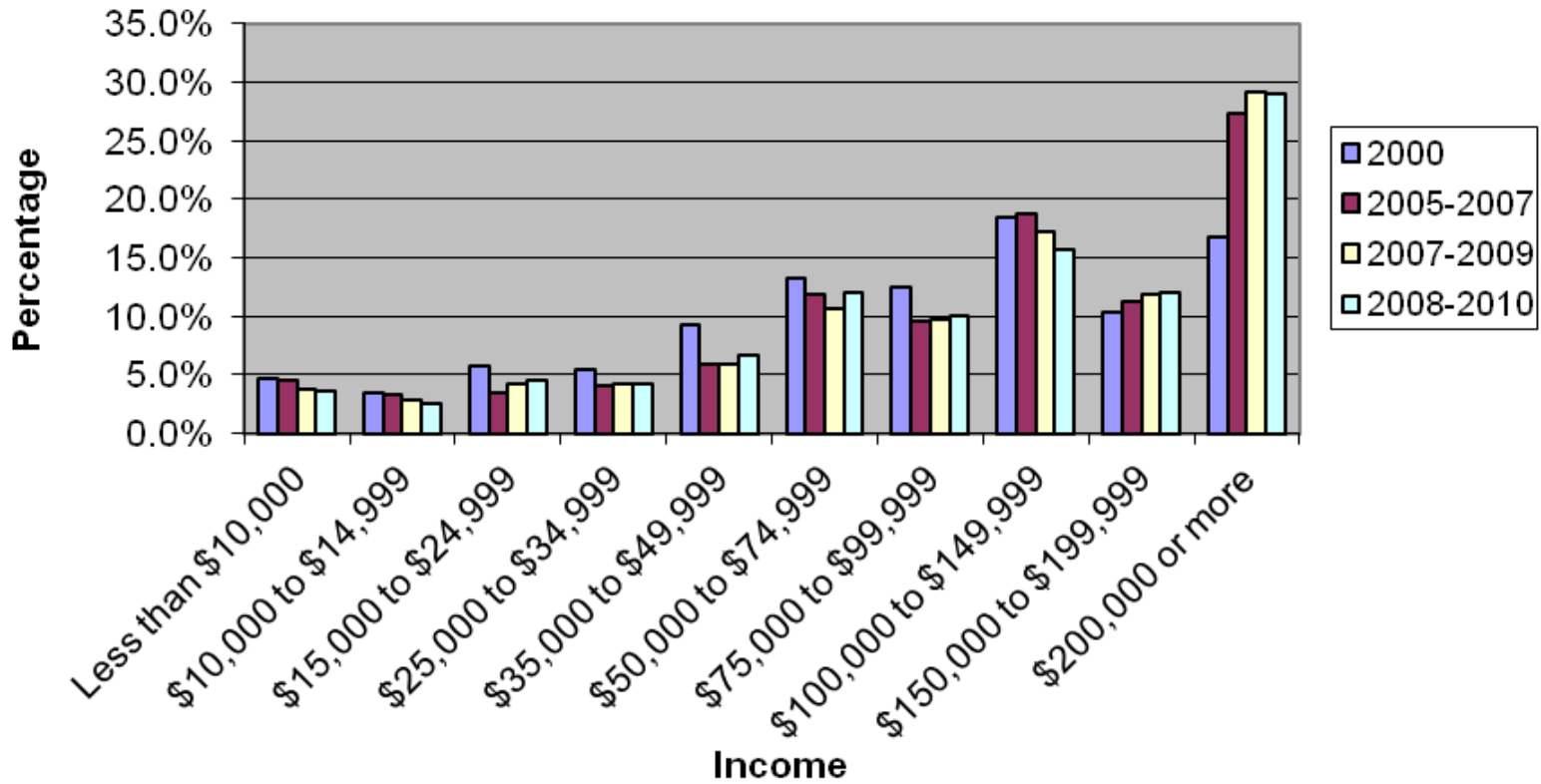
### Individuals Receiving Medi-Cal 2012 to 2016



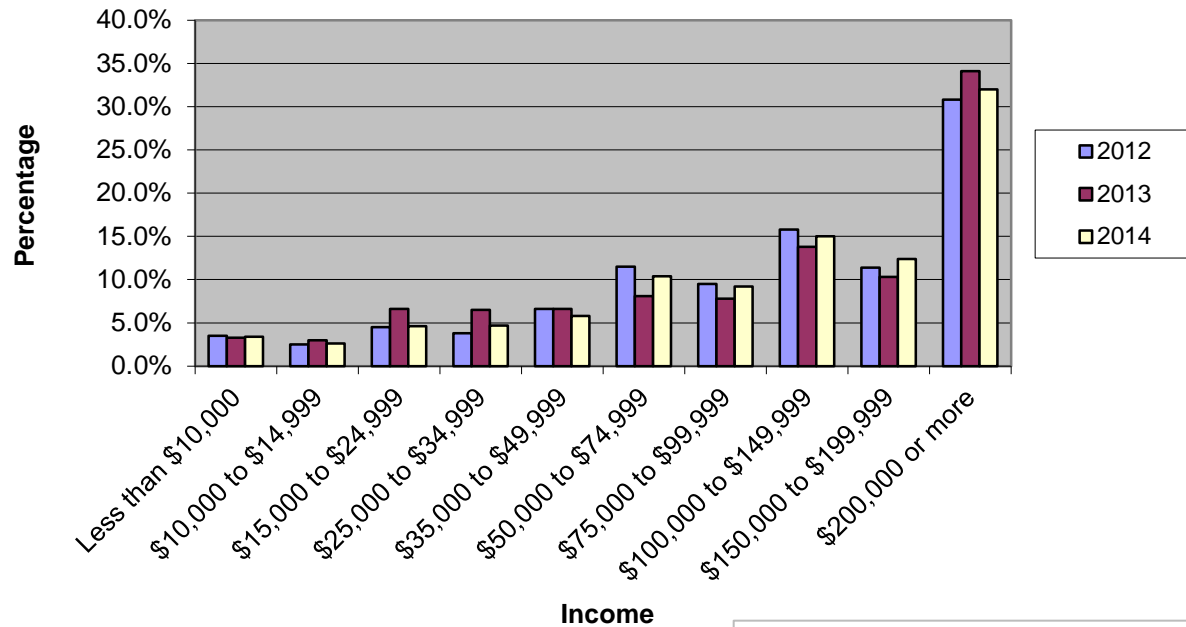
\*Data unavailable

Source: Santa Clara County

## Palo Alto Household Income Trends 2000 - 2010

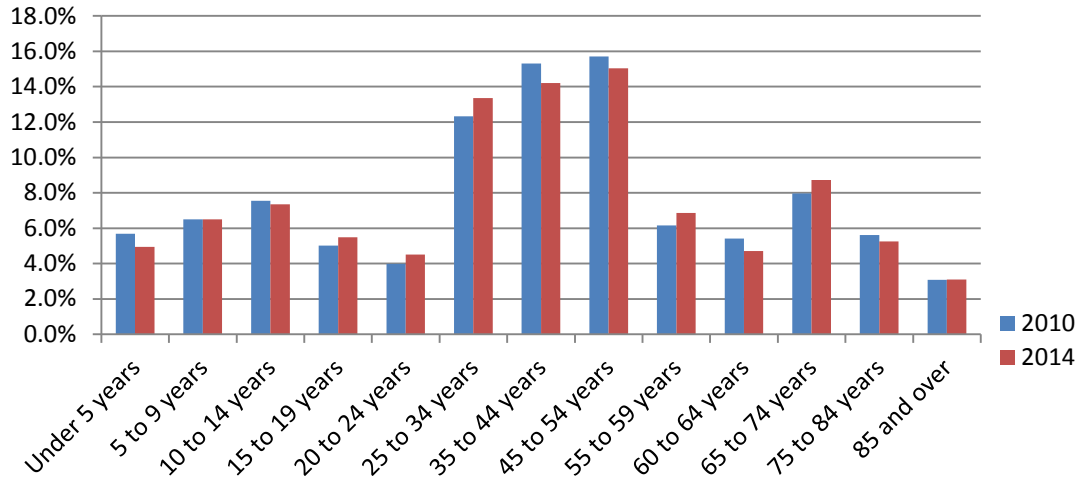


### Palo Alto Household Income Trends 2012, 2013 & 2014

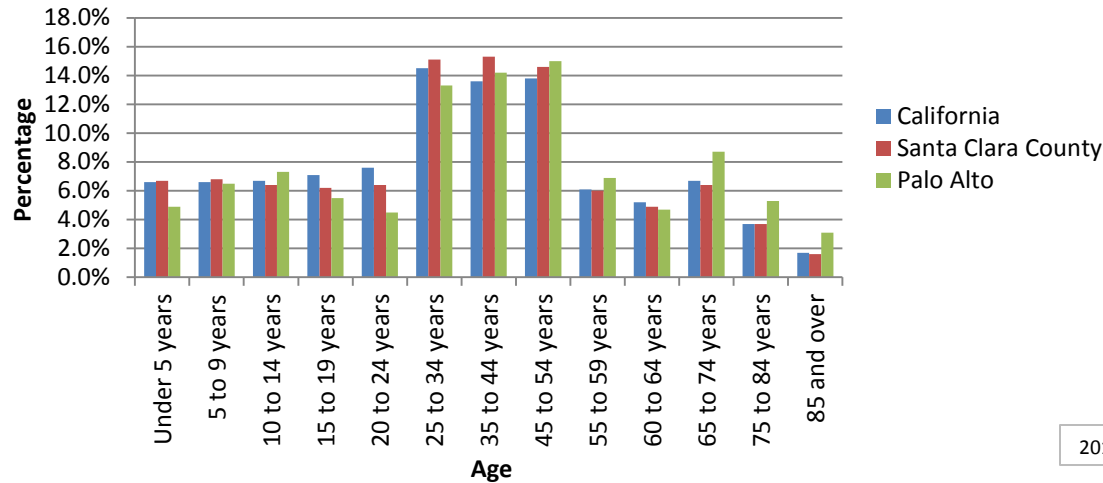


2012, 2013 & 2014 American Community Survey

## Palo Alto Age Distribution 2010 to 2014

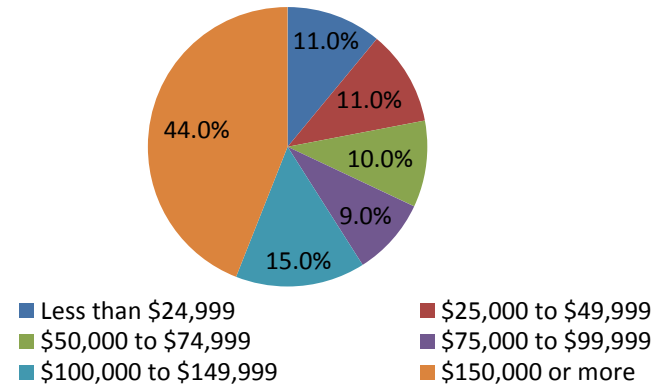


## Age Distribution Comparison, 2014



## City of Palo Alto 2014

Palo Alto Household (HH) Income, 2014	Percent	Total HHs
Below \$100,000	34%	9,088
Below \$50,000	21%	5,548
Below \$25,000	11%	2,800



Source: 2010 & 2014 American Community Survey

Palo Alto Household (HH) Income, 2010	Percent	Total HHs
Below \$100,000	43.4%	11,080
Below \$50,000	21.5%	5,485
Below \$25,000	10.7%	2,723

