

FISCAL YEAR 2021

ADOPTED MUNICIPAL FEE SCHEDULE





# Fiscal Year 2021 Adopted Municipal Fee Schedule

## City Council

Adrian Fine, Mayor

Tom DuBois, Vice Mayor

Alison Cormack

Eric Filseth

Liz Kniss

Lydia Kou

Greg Tanaka

**Ed Shikada**, City Manager

**Kiely Nose**, Director of Administrative Services/Chief Financial Officer

**David Ramberg**, Assistant Director of Administrative Services

**Christine Paras**, Assistant Director of Administrative Services

**Paul Harper**, Budget Manager, Office of Management and Budget

**Greg Tanaka**, Finance Committee Chair

## CITY OF PALO ALTO

The government of the City of Palo Alto exists to promote and sustain a superior quality of life in Palo Alto. In partnership with our community, our goal is to deliver cost-effective services in a personal, responsive and innovative manner.

# Our Values



### Quality

Superior delivery of services

### Courtesy

Providing service with respect and concern

### Efficiency

Productive, effective use of resources

### Integrity

Straight-forward, honest and fair relations

### Innovation

Excellence in creative thought and implementation

# Acknowledgments

## Department Budget Coordinators

### **Administrative Services**

David Ramberg

### **City Clerk**

Jessica Brettle

### **Community Services**

Jazmin LeBlanc

Lindsay Wong

### **Fire**

Amber Cameron

### **Library**

Giovanna Erkanat

### **Planning and Development Services**

Khashayar Alaei (Development Services)

Sherry Nikzat (Planning)

Sarah McRee (Planning)

### **Police/Office of Emergency Services**

Eric Jensen

### **Public Works**

Dinaa Alcocer

Maybo AuYeung

Michelle Austin

### **City Manager/Office of Transportation**

Elizabeth Egli

## Office of Management & Budget Staff

Kiely Nose

Christine Paras

Paul Harper

Jessie Deschamps

Steve Guagliardo

Alexandra Harris

Chaitali Paliwal

Kayla Shapiro

## Contact Information

For questions related to this document, please contact the City of Palo Alto Office of Management and Budget at 650-329-2260.

This document is also available at the Office of Management and Budget's website.  
[www.cityofpaloalto.org/budget](http://www.cityofpaloalto.org/budget).



CITY OF  
**PALO  
ALTO**



## Annual Review of Municipal Fees

A fee is a charge imposed on an individual or business for a service that the individual or business chooses to receive. A fee may not exceed the estimated reasonable cost of providing the particular service or facility for which the fee is charged, plus overhead. Examples of City fees include building permits, recreation classes, and development impact fees.

As part of the annual budget process, the City's Municipal Fees are reviewed to ensure that fees are set in accordance with applicable federal and state laws, in addition to the City of Palo Alto User Fee Cost Recovery Level Policy (City Council approval: May 2015) and the Community Service Department Class Cost Recovery Policy (City Council approval: November 2007). City departments review their fees for services and make recommendations to Office of Management and Budget (OMB) to add new fees, delete existing fees, and make changes to existing fees. In coordination with departments, OMB staff review amendments to the Municipal Fee Schedule to ensure that fees are consistent with applicable policies and procedures. Amendments to the Municipal Fee Schedule are submitted to the Finance Committee for review and discussion during the annual budget process.

The Fiscal Year 2021 Municipal Fee Schedule was adopted by the City Council on June 22, 2020.

## Cost Recovery

Propositions 13, 218, and 26 have placed both substantive and procedural limits on cities' ability to impose fees and charges. Collectively these constitutional amendments provide safeguards against taxes being imposed without a vote of the people. Proposition 26 contains a more general articulation of the cost of service principle and includes a requirement that the local government bear the burden of proof that "a levy, charge, or other exaction is not a tax, that the amount is no more than necessary to recover the reasonable costs of the government activity, and that the manner in which those costs are allocated to a payor bear a fair or reasonable relationship to the payor's burden on, or benefits received from, the governmental activity." California Constitution, Article XIII C, § (e)

Certain types of fees, such as fines, penalties and/or late charges, or charges imposed for entrance to or use of, as well as the purchase, rental, or lease of local government property, are expressly exempted from the provision quoted above and not required to be based on actual costs of providing service. Instead, these types of fees are more typically governed by local market rates, reasonableness, and potentially other policy factors. Fees such as facility rental fees, or golf course greens fees fall into this category. Other fees for services such as lessons and classes, where participation is voluntary and there are meaningful private sector alternatives, may also be exempt from Prop 26's limitations as they are not "imposed" by government. Consequently, these fees are not bound to certain cost recovery levels and can even have rates that are higher than the full cost recovery level, if appropriate. Staff should consult with the City Attorney's office when considering a fee that exceeds full cost recovery.

This policy was approved by the City Council on June 17, 2019 (CMR # 10419).

### Understanding the Municipal Fee Schedule

The Municipal Fee Schedule provides a detailed listing of fees by department. Fees that are not specific to a particular department are found in the Citywide section. In each department section, fees are broadly divided by service area or division. In each section table, fees are further grouped by activity or service and in alphabetical order. Each fee is listed along with the City Council adopted rate for the current fiscal year. Certain fees have multiple rates based upon residency, non-profit status, or regular/overtime rates. These tiered fees are listed where appropriate. The Municipal Fee Schedule does not include fees for the Palo Alto Airport, nor does it include information about the Water, Wastewater Collection, Electric, Fiber, Gas, Storm, and Refuse rates. For more information regarding these rates, please visit the City of Palo Alto website at [www.cityofpaloalto.org](http://www.cityofpaloalto.org).

# Table of Contents







CITY OF  
**PALO  
ALTO**

# Table of Contents

<b>I</b>	<b>Acknowledgments</b>	<b>3</b>
<b>II</b>	<b>Municipal Fees and Schedule</b>	<b>5</b>
<b>III</b>	<b>Table of Contents</b>	<b>9</b>
<b>IV</b>	<b>Administrative Services</b>	<b>17</b>
	General	17
	Fees and Permits	17
	Real Estate	17
	Conveyance	17
	Easement Vacation	17
	Revenue Collection	17
	Documents & Photocopies	17
	Miscellaneous	18
	Parking	18
<b>V</b>	<b>City Clerk</b>	<b>21</b>
	General	21
	Appeals	21
	Documents & Photocopies	21
	Domestic Partner Registry	21
	Subscriptions	21
<b>VI</b>	<b>Citywide</b>	<b>25</b>
	General	25
	Documents & Photocopies	25
	Maps	25
	Media	25
	Miscellaneous	25
	Plans, Standards & Large Format Printing	25
<b>VII</b>	<b>Community Services</b>	<b>29</b>
	Arts & Sciences	29
	Art Center	29
	Art Center - Admissions	29
	Art Center - Registration	29
	Arts Activities	29

# TABLE OF CONTENTS

Children's Theatre - Admissions .....	29
Children's Theatre - Registration .....	29
Community Theatre - Admissions .....	29
Junior Museum & Zoo (JMZ) - Registration .....	29
Recreation .....	30
Recreation Activities - Admissions .....	30
Recreation Activities - Concessions & Merchandise .....	30
Recreation Activities - Registration .....	30
Rinconada Complex and PAUSD Pools - Aquatics .....	30
Open Space, Parks & Golf .....	31
Golf - Club & Cart Rental Fees .....	31
Golf - Driving Range Fees .....	31
Golf - Green Fees .....	31
Golf - Special Fees .....	32
Open Space Activities - Registration .....	32
Park Activities .....	32
Park Activities - Community Garden .....	32
Animal Services .....	32
Adoptions .....	32
Animal Permits .....	32
Boarding .....	33
Cremation .....	33
Euthanasia .....	33
Other Animal Shelter Fees .....	33
Pet Licenses .....	33
Spay & Neuter Clinic Fees - Cat .....	33
Spay & Neuter Clinic Fees - Dog .....	34
Spay & Neuter Clinic Fees - General .....	34
Vaccinations .....	34
Veterinary Services .....	35
Rentals & Reservations .....	37
Art Center .....	37
Athletic Fields .....	37
Children's Theatre .....	38
Community Theatre .....	38
Cubberley Community Center .....	38
Cubberley Community Center - Infrequent Rentals .....	38

# TABLE OF CONTENTS

Cubberley Community Center - Personnel Rates .....	39
Cubberley Community Center - Regular Weekly Rentals .....	39
Cubberley Community Center - Rentals & Reservations .....	39
Cubberley Community Center - Special Equipment & Services .....	39
Cubberley Community Center - Theatre Rentals .....	40
Foothills Park .....	40
General .....	40
General - Personnel Rates .....	41
General - Special Equipment & Services .....	41
Junior Museum & Zoo .....	42
Lucie Stern Community Center .....	42
Mitchell Park Community Center .....	42
Rinconada Complex and PAUSD Pools .....	43
Swimming Pool Rentals .....	43
<b>VIII Fire .....</b>	<b>47</b>
Paramedics & Training .....	47
Compliance Fees .....	47
Paramedics .....	47
Training .....	47
<b>IX Library .....</b>	<b>51</b>
General .....	51
Fines & Penalties .....	51
Rentals & Reservations .....	51
Sales .....	51
Services .....	51
<b>X Office of Transportation .....</b>	<b>55</b>
Transportation .....	55
Bicycle .....	55
Parking Permit - Business District .....	55
Parking Permit - Commercial/Construction .....	55
Parking Permit - Residential .....	55
<b>XI Planning and Development Services .....</b>	<b>59</b>
Development Services - Building .....	59
Building Permit Fees .....	59
Construction & Demolition .....	59

## TABLE OF CONTENTS

Electrical Permits . . . . .	59
Electrical Permits - Electrical Vehicle Charging Stations . . . . .	60
Electrical Permits - Photovoltaic Systems . . . . .	60
General & Miscellaneous Fees . . . . .	60
Green Building . . . . .	61
Mechanical Permits . . . . .	62
Parking Permit - Commercial/Construction . . . . .	62
Plan Review Fees . . . . .	62
Plumbing Permits . . . . .	63
Plumbing Permits - Graywater Systems . . . . .	63
Development Services - Public Works . . . . .	64
Encroachment Permit . . . . .	64
Engineering . . . . .	64
SB 1473 Fee . . . . .	64
Strong Motion Instrument Program . . . . .	64
Use & Occupancy Permits . . . . .	64
Development Services - Fire . . . . .	65
Compliance Fees . . . . .	65
General & Miscellaneous Fees . . . . .	65
Inspection Fees . . . . .	65
Map/Plan Review Fees . . . . .	65
Permit Fees . . . . .	65
Documents . . . . .	66
General & Miscellaneous Fees . . . . .	66
Hazardous Materials Classification Permits . . . . .	66
Hazardous Materials Storage Permits . . . . .	67
Inspection Fees . . . . .	67
Investigations & Consultations . . . . .	68
Life Safety & Fire Protection . . . . .	68
Specific Hazard Permits . . . . .	68
Planning . . . . .	69
Appeals and Legal Review Fees . . . . .	69
Architectural Review . . . . .	69
Comprehensive Plan Change . . . . .	70
Development Agreement . . . . .	70
Director's Approval . . . . .	70
Documents & Photocopies . . . . .	70



# TABLE OF CONTENTS

Environmental Impact Assessment.....	71
Historic Resource .....	71
Individual Review.....	72
Other Application Fees .....	72
Site & Design .....	72
Subdivision - Five or More Parcels .....	72
Subdivision (Minor).....	73
Subdivision (Minor) with Exception .....	73
Use Permit.....	73
Variance.....	73
Wireless Permit .....	73
Zone Change .....	73
Impact & In-Lieu Fees.....	74
Development Impact Fees - Non-Residential.....	74
Development Impact Fees - Residential .....	74
Development In-Lieu Fees - Residential .....	75
Parking In-Lieu Fees.....	75
Parkland Dedication Fee .....	75
Public Art In-Lieu Fee.....	75
Traffic Impact Fees.....	75
<b>XII Police .....</b>	<b>79</b>
General.....	79
Background Check .....	79
False Alarm.....	79
Impoundment Fees.....	79
Miscellaneous .....	79
Personnel Rates.....	79
Special Fees .....	79
Animal Control.....	80
Animal Permits.....	80
Disposal .....	80
Impoundment Fees - Cat.....	80
Impoundment Fees - Dog - Licensed.....	80
Impoundment Fees - General.....	81
Impoundment Fees - Dog - Unlicensed.....	81
Special Event .....	81
Personnel Rates.....	81

## TABLE OF CONTENTS

Special Fees .....	82
Street Closure.....	82
Licenses .....	83
Adult Entertainment.....	83
Firearms Dealer .....	83
Massage Establishment .....	83
Miscellaneous .....	83
Pushcart Vendors .....	83
Secondhand Dealers.....	84
Taxicab.....	84
Valet Parking .....	84
<b>XIII Public Works .....</b>	<b>87</b>
Engineering.....	87
Encroachment Permit.....	87
Inspection Fees .....	87
Permit Fees.....	87
Street Cut Fees .....	87
Storm Drain.....	87
Permit Fees.....	87
Operations.....	88
Maintenance & Repair.....	88
Map/Plan Review Fees.....	88
Tree Removal .....	88
Wastewater Treatment .....	88
Industrial Waste Discharge Fees .....	88
Industrial Waste Discharge Fees - Liquid Waste Disposal Fee .....	89
<b>XIV Americans with Disabilities Act .....</b>	<b>91</b>

# Administrative Services Fees





CITY OF  
**PALO  
ALTO**

## General

Fees and Permits	
Business Registry Fee	\$50.00 per business
SB 1186 Mandated Fee	Please see Planning and Development Services section for this fee
Tobacco Retail Permit <i>Note: These fees are set by and collected by the County tobacco retailer permit program, which requires tobacco retailers to apply for and maintain a permit to sell tobacco products. For more information, please visit <a href="http://www.sccgov.org/sites/cpd/programs/tb">www.sccgov.org/sites/cpd/programs/tb</a>.</i>	One-time application fee \$340. Annual permit fee \$425.

## Real Estate

Conveyance	
Commercial/Non-Residential/Residential - Long Term (More than 12 months)	\$1,450.00 each
Consent to Assignment, Amendment, Extension or Hypothecation of a lease or sublease where the City is lessor	\$648.00 each
Easement Document Preparation and Processing (Commercial & Residential)	\$1,410.00 each
License/Grant Deed Preparation	\$1,600.00 each
Property Transfer Tax Exemption Fee	\$204.00 each
Public Notice Mailing/Posting/Advertising (Commercial & Residential) <i>Note: This fee covers only the initial deposit, actual cost of advertising to be billed separately.</i>	\$100.00 per deposit
Telecommunication Application Processing Fee	\$2,840.00 each
Easement Vacation	
General	\$4,056.00 each
Summary	\$1,726.00 each

## Revenue Collection

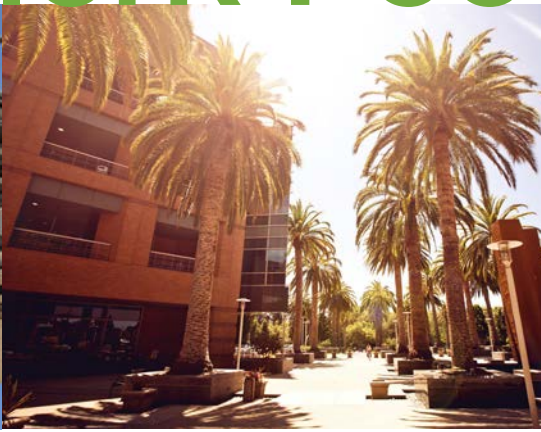
Documents & Photocopies	
Budget Book <i>Note: Plus cost of postage; available electronically at no cost.</i>	\$30.00 each



## ADMINISTRATIVE SERVICES

Comprehensive Annual Financial Report (CAFR) <i>Note: Plus cost of postage; available electronically at no cost.</i>	\$19.00 each
Mailing (Certified) <i>Note: Plus cost of postage.</i>	\$3.55 each
Municipal Fee Schedule <i>Note: Plus cost of postage; available electronically at no cost.</i>	\$8.00 each
<b>Miscellaneous</b>	
Duplicate Receipt	\$7.00 each
Returned Payment Charge (California Civil Code Section 1719)	\$25.00 each
<b>Parking</b>	
Permit Investigation (non-refundable)	\$19.00 each
Recreational Vehicle/Oversized Vehicle <i>Note: Non-refundable.</i>	\$19.00 per application

# City Clerk Fees





CITY OF  
**PALO  
ALTO**

## General

<b>Appeals</b>	
Appeal Costs Exceeding Appeals Filing Fee	Please see Planning and Development Services section for this fee
Planning Appeals	Please see Planning and Development Services section for this fee
<b>Documents &amp; Photocopies</b>	
Certification Fee	\$11.00 each
Fair Political Practices Commission Photocopies	\$0.10 per page
<b>Domestic Partner Registry</b>	
Domestic Partners Registration Fee	\$38.00 each
<b>Subscriptions</b>	
Candidate Filing Fee	\$25.00 each



CITY OF  
**PALO  
ALTO**



# Citywide Fees





CITY OF  
**PALO  
ALTO**

## General

Documents & Photocopies	
Black & White - All Sizes	Single: \$0.15/page; Double-Sided: \$0.30/page
Color (1-100) 8.5" x 11"	Single: \$0.40/page; Double-Sided: \$0.80/page
Color (1-100) 8.5" x 14"	Single: \$0.70/page; Double-Sided: \$1.40/page
Color (1-100) 8.5" x 17"	Single: \$0.80/page; Double-Sided \$1.60/page
Maps	
A. 200 Scale Zone Map	\$13.00 per page
B. 400 Scale Zone Map	\$9.00 per page
C. 600 Scale Zone Map	\$13.00 per page
D. 1,000 Scale Zone Map	\$13.00 per page
Media	
Thumb Drive	\$6.00 each
Miscellaneous	
Bicycle - Change of Ownership	\$3.00 per application
Bicycle - License	\$3.00 per license
Bicycle - Renewal	\$3.00 per renewal
Bicycle - Traffic School Registration	\$15.00 each
JC Decaux Public Toilet Fee	\$0.50 each
Online Processing of Traffic Citations	\$2.00 each
Plans, Standards & Large Format Printing	
22" x 36" or 24" x 36" or 26" x 36"	\$1.20 each
Capital Projects - \$100,000 and Below	\$28.00 each
Capital Projects - Above \$100,000 <i>Note: Plus additional charges</i>	\$56.00 each
Color Ink Jet Plot - 18" x 24"	\$3.00 per page
Color Ink Jet Plot - 24" x 36"	\$6.00 per page
Color Ink Jet Plot - 36" x 48"	\$12.00 per page
Ink Jet Plot - Blackline Film	2 times Reprographic Charges
Outside Printing Services	City Cost plus 15%
Sepia Vellum Film, Mylar	2 times Reprographic Charges
Small Format B&W Prints	8.5"x11" \$0.15 and 11"x17" \$0.25
Small Format Color Prints	8.5" x 11" \$0.40 and 11" x 17" \$0.80
Standard Color/Mono 8.5" x 11" and 11" x 17"	\$1.20 each
Standard Drawings & Specifications	\$18.00 each

## CITYWIDE

Utility Standards - Project Plan Set (Up to 25 sheets)	\$30.00 each
Utility Standards - Project Specification	\$30.00 each
Utility Standards - WGW Standards, Latest Edition	\$30.00 each

# Community Services Fees







CITY OF  
**PALO  
ALTO**

## Arts & Sciences

Art Center		
Locker Rental - Large	\$35.00 per season	
Locker Rental - Small	\$23.00 per season	
Art Center - Admissions		
Permit Fees <i>Note: Interested parties must apply and be selected by the Program Coordinator.</i>	Permit to perform in Arts & Sciences sponsored concert series	
Visual Performing Arts <i>Note: Special workshops and presentations (including Children's Theatre workshop fees).</i>	\$6.00 - \$2,320.00 per hour	
Art Center - Registration		
Administration Fee Per Registration	\$0.00 - \$50.00 each	
Arts Activities		
	Resident Fee	Non-Resident Fee
Birthday Party Admission <i>Note: Junior Museum and Zoo, Children's Theatre, and Art Center</i>	\$340.00 - \$618.00 per party	Fee plus up to 50%
Cancellation Charges	Up to 100% of fees paid	
Children's Theatre Enrichment	\$58.00 - \$309.00 per day	\$111.00 - \$596.00 per day
Drop-in Activities <sup>3, 13</sup>	\$5.00 - \$103.00 per person	
Field Trips	\$138.00 per group	
Instructional Classes & Camps <sup>3, 12</sup>	\$7.00 - \$988.00 per person	Fee plus up to 50%
Workshop Supplies	\$0.50 - \$88.00 per person	
Children's Theatre - Admissions		
Children's Theatre - Adults	\$12.00 - \$25.00 each	
Children's Theatre - Children	\$6.00 - \$25.00 each	
Ticket Processing Fee	\$1.00 - \$5.00 each	
Children's Theatre - Registration		
	Resident Fee	Non-Resident Fee
Children's Theatre - Per Show Production Per Participant Fee <sup>8</sup>	\$56.00 - \$358.00 each	Fee plus up to 50%
Community Theatre - Admissions		
Patron Facility Use Fee for Community Theatre	\$2.00 each	
Junior Museum & Zoo (JMZ) - Registration		
Family Membership	\$150.00 - \$430.00 each	
JMZ - Group Admission <i>Note: For organized groups of 15 -25. Larger groups will be subdivided with additional group admission fee.</i>	\$2.00 - \$10.00 per person	

## COMMUNITY SERVICES

	Resident Fee	Non-Resident Fee
JMZ - Science Child and Family Programs	\$28.00 - \$660.00 per program	Fee plus up to 50%
JMZ - Science School and Group Programs	\$147.00 - \$390.00 per program	Fee plus up to 50%
Ticketed Admission Fee	\$2.00 - \$24.00 per person	

## Recreation

Recreation Activities - Admissions		
Special Events <sup>3</sup>	\$6.00 - \$26.00 per person	
Teen Center Membership Fee	\$10.00 per month	
Recreation Activities - Concessions & Merchandise		
Merchandise <i>Note: Items include t-shirts, sweaters, pens, mugs, etc.</i>	\$1.00 - \$119.00 per item	
Recreation Activities - Registration		
Cancellation Charges	Up to 100% of fees paid	
	Resident Fee	Non-Resident Fee
Drop-in Activities <sup>3</sup>	\$2.00 - \$115.00 per person	Fee plus up to 50%
Individual Youth Sport Registration <sup>3</sup>	\$173.00 - \$345.00 per person	Fee plus up to 50%
Instructional Classes & Camps <sup>3</sup>	\$3.00 - \$988.00 per person	Fee plus up to 50%
Sport Team Registration - Youth & Adult	\$31.00 - \$1,035.00 per team	Fee plus up to 50%
Tournament Entry Fee	\$4.00 - \$445.00 per person	
Workshop Fee	\$2.00 - \$222.00 per person	
Rinconada Complex and PAUSD Pools when Operated by the City - Aquatics		
	Resident Fee	Non-Resident Fee
A. Infant (2 and Under)	\$0.00 - \$4.00 per person	\$0.00 - \$5.00 per person
B. Youth (17 and Under)	\$4.00 - \$7.00 per person	\$5.00 - \$10.00 per person
C. Adult (18 and Over)	\$5.00 - \$9.00 per person	\$6.00 - \$11.00 per person
D. Lap Swimming	\$5.00 - \$9.00 per person	\$5.00 - \$11.00 per person
E. Senior and Senior Lap (60 and Over)	\$4.00 - \$6.00 per person	
F. Membership (Swim Pass) - Youth (17 and Under) <sup>3</sup>	\$26.00 - \$67.00 per person	
G. Membership (Swim Pass) - Adult (18 and Over) <sup>3</sup>	\$26.00 - \$66.00 per person	

H. Membership (Swim Pass) - Senior (60 and Over)<sup>3</sup>

\$26.00 - \$66.00 per person

## Open Space, Parks & Golf

### Golf - Club & Cart Rental Fees

Hand Cart - 18 Holes	\$5.00 - \$12.00 per rental
Hand Cart - 9 Holes	\$3.00 - \$9.00 per rental
Power Cart - 18 Holes	\$15.00 - \$28.00 per rental
Power Cart - 9 Holes	\$10.00 - \$16.00 per rental
Pro-Line Clubs - 18 Holes	\$41.00 - \$88.00 per rental
Pro-Line Clubs - 9 Holes	\$21.00 - \$56.00 per rental
Single Rider - 18 Holes	\$16.00 - \$28.00 per rental

### Golf - Driving Range Fees

A. Small Bucket	\$4.00 - \$12.00 per bucket
B. Medium Bucket	\$7.00 - \$17.00 per bucket
C. Large Bucket	\$10.00 - \$23.00 per bucket
D. Jumbo Bucket	\$11.00 - \$28.00 per bucket
E. Medium Bucket Card - 10	\$62.00 - \$149.00 per bucket
F. Large Bucket Card - 10	\$93.00 - \$199.00 per bucket

### Golf - Green Fees

	Weekday Rates	Weekend/Prime Time Rates
9 Hole/Twilight Non Resident <i>Note: Twilight rate will begin 4.5 hours before sunset.</i>	\$33.00 - \$47.00 per player	\$39.00 - \$56.00 per player
9 Hole/Twilight Resident <i>Note: Twilight rate will begin 4.5 hours before sunset.</i>	\$29.00 - \$42.00 per player	\$35.00 - \$52.00 per player
Bay Area Resident <i>Note: Santa Clara County, San Mateo County, San Francisco County, Alameda County, and Contra Costa County.</i>	\$47.00 - \$72.00 per player	\$57.00 - \$105.00 per player
Baylands Cardholder	\$38.00 - \$63.00 per player	\$52.00 - \$83.00 per player
Juniors <i>Note: Will be available to those 17 years old and younger with valid ID.</i>	\$13.00 - \$24.00 per player	\$21.00 - \$39.00 per player
Membership Card	\$81.00 - \$330.00 per card	
Non Resident	\$52.00 - \$83.00 per player	\$67.00 - \$121.00 per player
Palo Alto Resident	\$41.00 - \$67.00 per player	\$54.00 - \$89.00 per player
Replay Rate	\$21.00 - \$33.00 per player	\$25.00 - \$45.00 per player

## COMMUNITY SERVICES

Senior (w/card)	\$35.00 - \$58.00 per player	
Golf - Special Fees		
League Reservation Fee	\$257.00 - \$646.00 per team	
	Weekday Rates	Weekend/Prime Time Rates
Tournaments	\$67.00 - \$121.00 per player	\$81.00 - \$149.00 per player
Youth (16 and Under) <i>Note: During special promotional periods only. All other fees charged.</i>	Free Green Fee with paying adult	
Open Space Activities - Registration		
Cancellation Charges	Up to 100% of fees paid	
Drop-in Activities <sup>3</sup>	\$1.00 - \$115.00 per person	
	Resident Fee	Non-Resident Fee
Instructional Classes & Camps <sup>3</sup>	\$3.00 - \$988.00 per person	Fee plus up to 50%
Interpretive Programs Including Tours and Birthday Parties	\$3.00 - \$865.00 each	\$3.00 - \$927.00 each
Park Activities		
Special Events	\$2.00 - \$119.00 per event	
Park Activities - Community Garden		
Organic Garden Clean-up/Security Deposit	\$100.00 - \$200.00 per garden plot	
Organic Garden Plot <sup>3, 17</sup>	\$0.88 per square foot	
Organic Garden Senior Rate	25% discount of square footage	

## Animal Services

<b>Adoptions</b>	
Adoption Hold Fee	\$25.00 per pet
Cockatiels	\$10.00 per pet
Dogs & Cats	\$150.00 per pet
Exotic Animals	\$10.00 per pet
Parakeets, Chickens, Pigeons, & Doves	\$10.00 per pet
Rabbits	\$40.00 per pet
Rats, Hamsters, Guinea Pigs, & Mice	\$10.00 per pet
<b>Animal Permits</b>	
Canine Training Deposit <i>Note: Basic rate.</i>	\$75.00 each

Boarding		
Cat	\$20.00 per day	
Dog	\$20.00 per day	
Large Animal (Horses, Cow, Pigs, etc.)	Actual cost including transportation expense will be charged to house the animal at the appropriate facility	
Rabbit	\$20.00 per day	
Small Animal (Reptiles, Birds, etc.)	\$20.00 per day	
Cremation		
	Private	Communal
A. Animal: 0lbs - 24lbs	\$151.00 per pet	\$108.00 per pet
B. Animal: 25lbs - 49lbs	\$172.00 per pet	\$125.00 per pet
C. Animal: 50lbs - 75lbs	\$190.00 per pet	\$140.00 per pet
D. Animal: 76lbs - 99lbs	\$205.00 per pet	\$162.00 per pet
E. Animal: 100lbs - 150lbs	\$237.00 per pet	\$178.00 per pet
F. Cremation Services - Custom Engraved Plaque Fee	\$22.00 each	
Euthanasia		
A. Domestic Animals (up to 20lbs)	\$81.00 per pet	
B. Dogs (21lbs to 75lbs)	\$119.00 per pet	
C. Dogs (76lbs and over)	\$152.00 per pet	
D. Small Animals and Birds	\$43.00 per pet	
Other Animal Shelter Fees		
Classes, camps, corporate events	\$20.00 - \$1,000.00 per event	
Pet Licenses		
	Per Pet	Spayed or Neutered
A. 12 Months	\$40.00 per dog	\$20.00 per dog
B. 24 Months	\$60.00 per dog	\$30.00 per dog
C. 36 Months	\$80.00 per dog	\$40.00 per dog
Cat ID <i>Note: License good for five years</i>	\$10.00 per cat	
Cat ID - Altered <i>Note: License good for five years</i>	\$5.00 per cat	
Late Fee	\$30.00 per dog	
Replacement License Tags (Dogs)	\$5.00 each	
Spay & Neuter Clinic Fees - Cat		
Neuter	\$50.00 per pet	
Spay	\$65.00 per pet	

## COMMUNITY SERVICES

Spay & Neuter Clinic Fees - Dog		
A. Neuter (0lbs - 50lbs)	\$75.00 per pet	
B. Neuter (51lbs and over)	\$100.00 per pet	
C. Spay (0lbs - 50lbs)	\$125.00 per pet	
D. Spay (51lbs and over)	\$175.00 per pet	
Spay & Neuter Clinic Fees - General		
48-Hour Cancellation Fee (non-refundable)	\$25.00 per pet	
Clinic Board Fee	\$20.00 per pet	
Late Fee for Spay/Neuter Pickup	\$25.00 per pet	
No-Show Fee (non-refundable)	\$50.00 per pet	
	Resident Fee	Non-Resident Fee
Rabbit - Neuter	\$75.00 per pet	\$95.00 per pet
Rabbit - Spay	\$100.00 per pet	\$120.00 per pet
Rat, Guinea Pig - Neuter	\$100.00 per pet	\$120.00 per pet
Rat, Guinea Pig - Spay	\$75.00 per pet	\$95.00 per pet
Rescue Group (Non-Profit) - Cat Spay/Neuter	\$50.00 per pet	
Rescue Group (Non-Profit) - Dog Spay/Neuter (over 50 lbs)	\$100.00 per pet	
Rescue Group (Non-Profit) - Dog Spay/Neuter (under 50 lbs)	\$75.00 per pet	
Vaccinations		
Bordatella	\$15.00 per pet	
DA2PP	\$15.00 per pet	
Deworming	\$20.00 per pet	
FVRCP	\$15.00 per pet	
Kitten Package	\$100.00 per pet	
Leukemia	\$15.00 per pet	
Microchip	\$25.00 per pet	
Microchip Rescue Group	\$25.00 per pet	
Puppy Package	\$100.00 per pet	
Rabies	\$15.00 per pet	
Rabies (Actual Clinic Cost) <i>Note: As required by state law, rabies vaccinations are provided at cost to the public one day per year.</i>	\$6.00 per pet	
Trap Rental - 3 Day Usage (minimum)	\$20.00 each	
Trap Rental - Additional (14 day maximum)	\$5.00 per day	
Trap Rental - Deposit	\$100.00 each	

Veterinary Services	
Animal Control Officer/Veterinary Technician	\$78.00 per hour
Antibiotic Injection	\$18.00 per pet
Bandages - Paws	\$28.00 - \$47.00 per pet
Bandages - Robert Jones	\$76.00 each
Bandages - Splint	\$83.00 - \$110.00 per pet
City Veterinarian	\$160.00 per hour
Common Procedures - Fluorescein Eye Stain	\$18.00 each
Common Procedures - Flushing Drains	\$3.00 each
Common Procedures - Force Feeding	\$5.00 each
Common Procedures - Incubator/ICU Cage with O2	\$87.00 per day
Common Procedures - Intensive Care (additional)	\$58.00 per hour
Common Procedures - Medical Grooming	\$87.00 per hour
Common Procedures - Medication (Rx Fee)	\$12.00 - \$70.00 per medication
Common Procedures - Oral or Topical Treatment	\$3.00 each
Common Procedures - Special Prescription Diets	\$5.00 per day
Common Procedures - Wormings	\$29.00 each
Cryptorchid plus Neuter Fee	\$27.00 - \$161.00 per pet
Deciduous Tooth Extraction	\$27.00 each
Dewclaw Removal	\$38.00 - \$54.00 per dewclaw
Droncit Injection (Tapeworms)	\$17.00 per pet
Ear Mite Treatment	\$32.00 per pet
Feral Rescue Own Felv/FIV Test	\$16.00 per pet
Feral Rescue Own Vaccine	\$5.00 per pet
Fluid Therapy - IV Catheter plus Insertion	\$58.00 each
Fluid Therapy - IV Fluids	\$26.00 each
Fluid Therapy - IVAC Set Up and Use	\$17.00 per day
Fluid Therapy - SQ (Cats)	\$41.00 each
Fluid Therapy - SQ (Dogs)	\$53.00 each
Heartworm Testing	\$38.00 with surgery only
Injections - IM & SQ	\$29.00 each
Injections - IV	\$41.00 each
Injections - IV solu-delta cortef 100mg	\$46.00 each
Injections - IV solu-delta cortef 500mg	\$58.00 each
Labwork - Azostick or Dextrostick	\$17.00 each



## COMMUNITY SERVICES

Labwork - Cite CPV Test	\$41.00 each
Labwork - DTM	\$35.00 each
Labwork - Fecal	\$29.00 each
Labwork - FeLV/FIV Test	\$35.00 each
Labwork - Heartworm Test	\$41.00 each
Labwork - Multistick Urinalysis	\$17.00 each
Labwork - PCV	\$17.00 each
Labwork - PCV/TP	\$29.00 each
Labwork - Reference Lab (CVD)	200% of City cost
Labwork - Skin Scraping	\$24.00 each
Leukemia/FIV Combo Testing	\$38.00 with surgery only
Nail Clip	\$5.00 per pet
Obesity Fee plus Spay Fee	\$24.00 - \$47.00 per pet
Pregnancy Fee plus Spay Fee	\$22.00 - \$81.00 per pet
Pre-surgical Labwork	City cost plus \$28.00 service fee
Previously Spayed/Neutered	\$38.00 per pet
Quarantine Home Inspection Fee	\$43.00 each
Rx for Clinic	\$17.00 - \$58.00 per pet
Sedation/Anesthesia - Gas	\$87.00 for first 30 minutes; \$1.60 per minute thereafter
Sedation/Anesthesia - IM	\$58.00 each
Sedation/Anesthesia - IV	\$82.00 each
Sedation/Anesthesia - Local	\$35.00 each
Special Rx	City cost plus \$17.00 service fee
Surgery - Minor Surgery and Preparation	\$41.00 each
Surgery - Surgical Time/Veterinary Treatment Time	\$116.00 per hour
Umbilical Hernia	\$38.00 - \$81.00 per pet
Wound Care	\$17.00 - \$58.00 per pet

# Rentals & Reservations

## Classification and Use of Fees

**Class I - City Use and City-Sponsored Activities:** No charge for facility rental for events or activities, however, fees for attendants, equipment rental, and special uses may apply. (Note: City facility use for City co-sponsored groups will be considered on a case by case basis.)

**Class II - 501(c)3 Non-Profit Organizations:** IRS recognized non-profit 501(c)3 organizations may receive a 50% reduction on basic facility rental rates upon verification. Only facility rental rates may be reduced and all other fees, such as staffing and equipment, are charged at the full rate. Non-profit organizations charging or collecting fees or raising funds are not eligible for reduced rates and basic fees will apply. This does not apply to class registration fees.

**Class III - Individuals, Groups, Organizations, and Businesses not charging fees:** Basic rental fees apply.

**Class IV - Business or Commercial Use:** Individuals, groups, organizations, and businesses charging, collecting, or raising funds may rent facilities and equipment at the basic rate plus 75%. The Art Center is not available for CLASS IV.

Art Center		
	Resident Fee	Non-Resident Fee
Auditorium	\$170.00 per hour	\$255.00 per hour
Children's Clay Studio	\$45.00 per hour	\$67.50 per hour
Children's Outdoor Classroom	\$103.00 per hour	\$154.50 per hour
Historic Courtyard	\$103.00 per hour	\$154.50 per hour
Kitchen/Pre-school	\$45.00 per hour	\$68.00 per hour
Lobby	\$103.00 per hour	\$154.50 per hour
Meeting Room	\$108.00 per hour	\$162.00 per hour
Project LOOK! Studio	\$45.00 per hour	\$67.50 per hour
Sculpture Garden	\$135.00 per hour	\$202.50 per hour
Studio A	\$45.00 per hour	\$67.50 per hour
Studio B	\$45.00 per hour	\$67.50 per hour
Athletic Fields		
	Resident Fee	Non-Resident Fee
Athletic Field Use Deposit	\$25.00 - \$500.00 per rental	\$37.50 - \$750.00 per rental
Field Lights <i>Note: Only Baseball and Softball Fields at El Camino Park and Baylands Athletic Center.</i>	\$29.00 per use	
Grass Fields	\$49.00 - \$87.00 per hour	\$89.00 - \$174.00 per hour
Grass Fields - Palo Alto Based Non-Profits	\$27.00 - \$58.00 per hour	Not Available
Grass Fields - Palo Alto Based Youth Sports Organizations <i>Note: When 51% or more of participants are Palo Alto residents.</i>	\$3.00 - \$29.00 per hour	Not Available
Synthetic Turf Field <i>Note: Stanford Palo Alto Playing Fields and Cubberley Football Field.</i>	\$66.00 - \$174.00 per hour	\$148.00 - \$232.00 per hour
Synthetic Turf Field - Palo Alto Based Non-Profits	\$47.00 - \$116.00 per hour	Not Available

## COMMUNITY SERVICES

Synthetic Turf Field - Palo Alto Based Youth Sports Organizations <i>Note: When 51% or more of participants are Palo Alto residents.</i>	\$35.00 - \$58.00 per hour	Not Available
Tennis Courts (USTA and Palo Alto Tennis Club Only)	\$5.00 - \$17.00 per hour	\$9.00 - \$24.00 per hour
Children's Theatre		
	Resident Fee	Non-Resident Fee
Auditorium and Stage <i>Note: Fee based on number of attendees.</i>	\$158.00 - \$2,100.00 per hour	\$237.00 - \$3,150.00 per hour
Castle Stage and Secret Garden <i>Note: Fee based on number of attendees.</i>	\$315.00 - \$2,625.00 per hour	\$473.00 - \$3,938.00 per hour
Dance Studio <i>Note: Fee based on number of attendees.</i>	\$34.00 - \$1,130.00 per hour	\$52.00 - \$1,693.00 per hour
Package Rental - All Available Space and Garden <i>Note: Fee based on number of attendees.</i>	\$1,050.00 - \$5,250.00 per hour	\$1,575.00 - \$7,875.00 per hour
Community Theatre		
	Resident Fee	Non-Resident Fee
Auditorium and Stage	\$250.00 per hour	\$375.00 per hour
Rehearsal Hall	\$50.00 per hour	\$75.00 per hour
Cubberley Community Center		
Additional Key Fee	\$16.00 each	
	Resident Fee	Non-Resident Fee
Art Studio Short Term	\$89.00 per week	\$99.00 per week
Cleaning and Damage Deposit	\$160.00 - \$2,200.00 depending upon event size	
Exclusive Monthly Storage Space (As Available) <i>Note: Per cubic foot per month.</i>	\$2.00 each	
Key Security Deposit	\$59.00 each	
Late Payment Fee	\$73.00 per month	
Cubberley Community Center - Infrequent Rentals		
	Basic Rate	Non-Profit Rate
Amphitheater (Grass) <sup>18</sup>	\$42.00 per hour	\$32.00 per hour
Auditorium (Includes Kitchen) <sup>18</sup>	\$160.00 per hour	\$113.00 per hour
Dance Studio	\$62.00 per hour	\$53.00 per hour
Gym A	\$119.00 per hour	\$80.00 per hour
Gym B	\$143.00 per hour	\$94.00 per hour
H-1 Lecture Room	\$78.00 per hour	\$62.00 per hour
Meeting Room - Large (2,000 - 4,000 sq. ft.)	\$76.00 per hour	\$60.00 per hour
Meeting Room - Medium (1,000 - 2,000 sq. ft.)	\$60.00 per hour	\$51.00 per hour

Meeting Room - Small (Less than 1,000 sq. ft.)	\$46.00 per hour	\$38.00 per hour
Pavilion	\$175.00 per hour	\$155.00 per hour
Street Shoe Use Surcharge	\$22.00 per hour	
Cubberley Community Center - Personnel Rates		
	Regular Time	Overtime & Holiday
Custodial Staff <sup>14</sup>	\$41.00 per hour	\$58.00 per hour
Theatre Technician <sup>9, 14</sup>	\$41.00 per hour	\$58.00 per hour
Cubberley Community Center - Regular Weekly Rentals		
	Basic Rate	Non-Profit Rate
Amphitheater (Grass) <sup>18</sup>	\$30.00 per hour	\$24.00 per hour
Auditorium (Includes Kitchen) <sup>18</sup>	\$110.00 per hour	\$69.00 per hour
Dance Studio	\$48.00 per hour	\$42.00 per hour
Gym A	\$98.00 per hour	\$65.00 per hour
Gym B	\$108.00 per hour	\$73.00 per hour
H-1 Lecture Room	\$64.00 per hour	\$50.00 per hour
Meeting Room - Large (2,000 - 4,000 sq. ft.)	\$61.00 per hour	\$47.00 per hour
Meeting Room - Medium (1,000 - 2,000 sq. ft.)	\$46.00 per hour	\$39.00 per hour
Meeting Room - Small (Less than 1,000 sq. ft.)	\$39.00 per hour	\$31.00 per hour
Office/Program Space (As Available)	\$1.70 per sq. ft. per month	\$1.41 per sq. ft. per month
Pavilion	\$140.00 per hour	\$110.00 per hour
Street Shoe Use Surcharge	\$22.00 per hour	\$22.00 per hour
Cubberley Community Center - Rentals & Reservations		
Running Track	\$17.00 per hour	
Cubberley Community Center - Special Equipment & Services		
Additional Equipment: Lighting, Audio-Visual, and Staging	\$6.00 - \$159.00 per item plus labor	
Chairs - Padded <i>Note: Plus labor costs</i>	\$1.50 per item	
Cubberley Banner Marquee	\$25.00 per week	
Non-Reusable Materials/Supplies	\$1.50 - \$106.00 per item	
Piano - 7' Grand <i>Note: Plus moving and tuning costs</i>	\$50.00 per use	
Tables - 6' Round (Cubberley Only)	\$9.00 per item	
Upright Piano <i>Note: Plus moving and tuning costs.</i>	\$27.00 per use	

## COMMUNITY SERVICES

### Cubberley Community Center - Theatre Rentals

	Basic Rate	Non-Profit Rate
A. Performance Day Package <sup>9, 15</sup>	\$1,600.00 each	\$1,120.00 each
B. Production Day Package <sup>9, 16</sup>	\$1,350.00 each	\$945.00 each
C. Rehearsal Day Package <sup>6, 9</sup>	\$960.00 each	\$672.00 each
D. Dark Day Package <sup>4</sup>	\$270.00 each	\$190.00 each
E. Full Week Package <sup>9, 14</sup>	\$4,500.00 each	\$3,150.00 each
F. Additional Performance	\$400.00 each	\$280.00 each
G. Additional hours past ten daily	\$225.00 per hour	\$158.00 per hour
H. Additional Performance Hours Past Four per Performance	\$130.00 per hour	\$91.00 per hour
I. Dressing Room - M2 <sup>10, 18</sup>	\$30.00 per hour	\$26.00 per hour
J. Dressing Room - M3 <sup>10, 18</sup>	\$26.00 per hour	\$22.00 per hour
K. Dressing Room - M4 <sup>10, 18</sup>	\$30.00 per hour	\$26.00 per hour
L. Package Discount - Half Day <sup>2</sup>	20% discount	
M. Package Discount - Off Peak <sup>1</sup>	20% discount	

### Foothills Park

	Resident Fee	Non-Resident Fee
A. Oak Grove Picnic 1 - 50 People	\$90.00 per group	Not Available
B. Oak Grove Picnic 51 - 100 People	\$180.00 per group	Not Available
C. Oak Grove Picnic 101 - 150 People	\$270.00 per group	Not Available
Foothills Nature Interpretive Center Classroom	\$65.00 per hour	Not Available
Towle Camp	\$40.00 per campsite	Not Available

### General

	Resident Fee	Non-Resident Fee
Alma Plaza Community Room	\$27.00 per hour	\$41.00 per hour
Arastradero Gateway Educational Facility <sup>7</sup>	\$95.00 per hour	Not Available
Banner Space Rental	\$29.00 - \$116.00 per week	\$43.50 - \$174.00 per week
Baylands Nature Interpretive Center Meeting Room	\$89.00 per hour	\$134.00 per hour
Cancellation Charges	Up to 100% of fees paid	
Cleaning and Damage Deposit	\$300.00 - \$3,200.00 per deposit	
Corporate Event Fee <i>Note: Rental rates will depend on location, size and scope of the corporate event.</i>	\$4,300 - \$8,600 per event	
General Liability Insurance	By quote	
Lawn Bowling Green's Kitchen and Meeting Facility	\$50.00 per hour	\$75.00 per hour
Mitchell and Rinconada Parks - Bowl Areas	\$9.00 - \$87.00 per hour	\$17.00 - \$174.00 per hour

Peers Park, Mitchell Park Field House	\$27.00 per hour	Not Available
Picnic Reservations - Arbor Group Site	\$49.00 per group	Not Available
Picnic Reservations - East Meadow Group Site	\$76.00 per group	Not Available
Picnic Reservations - Pine Grove Group Site	\$139.00 per group	Not Available
Picnic Reservations - Redwood Group Site	\$112.00 per group	Not Available
Picnic Reservations - Sequoia Group Site	\$62.00 per group	Not Available
Picnic Reservations (1 - 15 people)	\$28.00 per group	\$33.00 per group
Special Use Permit	\$300.00 - \$2,325.00 per permit	
General - Personnel Rates		
	Regular Time	Overtime & Holiday
Custodial Services	\$41.00 per hour	\$60.00 per hour
Facility Attendant and/or Assistant	\$41.00 per hour	\$60.00 per hour
Lifeguard	\$25.00 per hour	\$38.00 per hour
Palo Alto Junior Museum & Zoo Attendant	\$33.00 per hour	\$50.00 per hour
Park Ranger <i>Note: Excludes Overtime &amp; Holiday</i>	\$99.00 per hour	
General - Special Equipment & Services		
	Resident Fee	Non-Resident Fee
Built-in Digital Projector System	\$50.00 per use	\$75.00 per use
Canoe (Foothills Park Only)	\$20.00 per use	Not Available
Chairs <i>Note: Per unit charge when not included as part of facility rental.</i>	\$1.50 per chair	\$2.25 per chair
Coffee Urn	\$13.00 per use	\$19.50 per use
Facility Rental Liability Insurance <i>Note: Optional fee for liability insurance is charged at a rate determined by the City's insurer.</i>	Optional	
Grand Piano	\$100.00 per use	\$150.00 per use
Personal Flotation Device (Foothills Park Only)	\$2.00 per use	
Podium and Microphone	\$34.00 per use	\$52.00 per use
Portable Digital Projector	\$70.00 per use	\$105.00 per use
Portable Movie Projector - 16mm	\$11.00 per use	\$16.50 per use
Portable Public Address System	\$16.00 per use	\$24.00 per use
Public Address System with Microphones	\$62.00 per use	
Tables - 6' Round <i>Note: Per unit charge when not included as part of facility rental.</i>	\$9.00 per table	\$11.00 per table
Television	\$15.00 per use	\$23.00 per use

## COMMUNITY SERVICES

Junior Museum & Zoo		
	Resident Fee	Non-Resident Fee
Dawn Redwood Courtyard	\$250.00 per hour	\$325.00 per hour
Exhibit Hall Rental <sup>5</sup> <i>Note: May include zoo access</i>	\$295.00 per hour	\$442.00 per hour
Indoor Classroom	\$96.00 per hour	\$105.00 per hour
Multi-use Room	\$120.00 per hour	\$180.00 per hour
Outdoor Classroom	\$120.00 per hour	\$180.00 per hour
Package Rental - All Available Space <i>Note: A 4-hour minimum is required for rental of all available space</i>	\$750.00 per hour	\$1,125.00 per hour
Lucie Stern Community Center		
	Resident Fee	Non-Resident Fee
Ballroom (Room S)	\$197.00 per hour	\$283.00 per hour
Community Room (Room R)	\$147.00 per hour	\$199.00 per hour
Fireside Room (Room D)	\$112.00 per hour	\$156.00 per hour
Kitchen	\$42.00 per hour	\$59.00 per hour
Package Rental - Community Room and Patio Package	\$177.00 per hour	\$253.00 per hour
Package Rental - Exclusive Use (Friday, Saturday & Sunday) <i>Note: Includes facility attendant and equipment.</i>	\$428.00 per hour	\$526.00 per hour
Package Rental - Exclusive Use (Saturday 2PM- Midnight) <i>Note: Includes facility attendant and equipment.</i>	\$4,085.00 each	\$4,730.00 each
Package Rental - Exclusive Use Package (Monday-Thursday) <i>Note: Includes facility attendant and equipment.</i>	\$392.00 per hour	\$472.00 per hour
Package Rental - Fireside Room and Patio Package	\$152.00 per hour	\$218.00 per hour
Patio	\$108.00 per hour	\$154.00 per hour
Mitchell Park Community Center		
	Resident Fee	Non-Resident Fee
Adobe North Tech Lab	\$120.00 per hour	\$180.00 per hour
Adobe South or Matadero Room	\$96.00 per hour	\$144.00 per hour
El Palo Alto East or West Only	\$120.00 per hour	\$180.00 per hour
El Palo Alto Room (Ballroom)	\$242.00 per hour	\$362.00 per hour
Kitchen	\$69.00 per hour	\$104.00 per hour
Package Rental - Adobe North Tech Lab and South Meeting Room	\$209.00 per hour	\$312.00 per hour
Package Rental - Birthday Package <i>Note: Includes game room, basketball court, and party host.</i>	\$225.00 per hour	\$337.00 per hour
Package Rental - El Palo Alto Room and Kitchen	\$295.00 per hour	\$442.00 per hour

Package Rental - Exclusive Use Package <i>Note: Includes facility attendant.</i>	\$548.00 per hour	\$821.00 per hour
<b>Rinconada Complex and PAUSD Pools when Operated by the City</b>		
	<b>Resident Fee</b>	<b>Non-Resident Fee</b>
A. 1 - 25 People (2 Hour Minimum)	\$93.00 - \$154.00 per hour	\$118.00 - \$165.00 per hour
B. 26 - 50 People (2 Hour Minimum)	\$134.00 - \$195.00 per hour	\$144.00 - \$205.00 per hour
C. 51 - 75 People (2 Hour Minimum)	\$175.00 - \$236.00 per hour	\$185.00 - \$247.00 per hour
D. 76 - 100 People (2 Hour Minimum)	\$205.00 - \$267.00 per hour	\$216.00 - \$277.00 per hour
E. 101 People or More (2 Hour Minimum)	\$257.00 - \$318.00 per hour	\$267.00 - \$328.00 per hour
<b>Swimming Pool Rentals</b>		
	<b>Resident Fee</b>	<b>Non-Resident Fee</b>
A. 1 - 25 People	\$77.00 - \$103.00 per hour	\$98.00 - \$118.00 per hour
B. 26 - 50 People	\$98.00 - \$118.00 per hour	\$133.00 - \$149.00 per hour
C. 51 - 75 People	\$129.00 - \$144.00 per hour	\$173.00 - \$190.00 per hour
D. 76 - 100 People	\$159.00 - \$180.00 per hour	\$231.00 - \$252.00 per hour
Palo Alto Swim Club and Palo Alto Masters Swim Club	\$5.00 - \$16.00 per hour per lane; \$57.00 - \$216.00 per hour for all lanes	Not Available



### Endnotes

- <sup>1</sup> A 20% discount is given for bookings on off-peak days (Monday through Thursday).
- <sup>2</sup> A 20% discount is given for half-day rentals (five or less hours either concluding before 2 p.m. or starting after 4 p.m.) or rentals of five hours or less booked before or after an existing rental on the same day. This discount will not apply to multi-day bookings where the client's technical setup does not allow for other clients to rent between bookings.
- <sup>3</sup> A 25% or 50% fee discount through the Fee Reduction Program may be provided for low-income youth (17 & under), seniors (60+), and/or disabled adult residents. Income eligibility is determined using the Community Development Block Grant (CDBG) Low-Income Guidelines. Each participant accepted into the program may receive an annual subsidy up to \$300. Discount percentage will be based on income level.
- <sup>4</sup> A Dark day is defined as no activity in the building. This is so clients may leave their setup in place between rental days. Peak days are not available as Dark Days.
- <sup>5</sup> A four-hour minimum is required for Zoo rental.
- <sup>6</sup> All other building use falls under this category, including rehearsals, load-in and restore days.
- <sup>7</sup> Arastradero Gateway Educational Facility rental limited to educational use.
- <sup>8</sup> Either fee or in-lieu funding agreement with Friends of Palo Alto Children's Theatre.
- <sup>9</sup> Fee package includes event supervisor, the M-11 dressing room and all dedicated theatre equipment. Additional technical staff may be required.
- <sup>10</sup> When this portion of the Cubberley Community Center is operated by the City, M2, M3, and M4 dressing room fees assessed only when used as dressing rooms for theatre rentals.
- <sup>11</sup> Minimum of 4 hours
- <sup>12</sup> Art Center Foundation members at the Friend & Family level or above are eligible for a 20% discount on one (1) Studio class or summer camp per Foundation membership year to be reimbursed to the City from the Art Center Foundation.
- <sup>13</sup> For every 10 hours of time purchased in a Visual Arts Studio drop-in program, one hour is given free.
- <sup>14</sup> Full week includes exclusive use of the Theatre for up to 7 consecutive days, with up to ten hours of usage per day, and up to four performances, of up to four hours each, during that time.
- <sup>15</sup> Performance defined as activity on stage with a live audience present. Performance packages include one performance block up to four hours.
- <sup>16</sup> Production is defined as videography of onstage activity without a live audience or similar usage.
- <sup>17</sup> Volunteer Garden Liaisons will have their garden fee waived in appreciation for their service to assist in managing the garden. (Approved by the Parks and Recreation Commission on June 21, 2011.)
- <sup>18</sup> On June 22, 2020, the City Council approved a new lease agreement for Cubberley Community Center between the City of Palo Alto and Palo Alto Unified School District, effective July 1, 2020, in which certain areas of the facility are no longer leased by the City and are not available to rent. For full details, please see staff report #11460: [www.cityofpaloalto.org/civica3/filebank/documents/77365](http://www.cityofpaloalto.org/civica3/filebank/documents/77365).

# Fire Fees





CITY OF  
**PALO  
ALTO**

## Paramedics & Training

Compliance Fees	
Engine Company Second Reinspection	\$274.00 per hour
Preventable False Alarm (CFC 401.3.1)	\$246.00 - \$2,053.00 per hour
Paramedics	
911 Advanced Life Support Transport Mileage <sup>1</sup>	\$31.00 per mile
911 Basic Life Support Transport Mileage <sup>1</sup>	\$31.00 per mile
Advanced Life Support - Base/BLS Downgrades Bundled Rate <sup>1</sup> <i>Note: Bundled charges include transport and supplies with the exception of O2, mileage, and Night Transport fee.</i>	\$2,120.00 per occurrence
Advanced Life Support - LS II Bundled Rate <sup>1</sup> <i>Note: Bundled charges include transport and supplies with the exception of O2, mileage, and Night Transport fee.</i>	\$2,460.00 per occurrence
Advanced Life Support - Special Event Standby <sup>1</sup> <i>Note: The Fire Chief or his designee can negotiate the fee for contracted services.</i>	\$259.00 - \$421.00 per hour
Basic Life Support - Scheduled Transport <sup>1</sup>	\$333.00 - \$734.00 per occurrence
Basic Life Support - Single <sup>1</sup>	\$632.00 per occurrence
Basic Life Support - Special Event Standby <sup>1</sup>	\$105.00 - \$197.00 per hour
Contracted Interfacility Basic Life Support Transport <sup>1</sup>	\$16.00 - \$31.00 per mile
Interfacility Basic Life Support Transport Mileage <sup>1</sup>	\$31.00 per mile
Night Transport Fee <sup>1</sup>	\$92.00 per occurrence
Oxygen <sup>1</sup>	\$157.00 per occurrence
Training	
Fire Department Training (Full Day)	\$139.00 per class
Fire Department Training (Half Day or Less)	\$70.00 per class
Paramedic Internship Fee	\$1,367.00 each

## Endnotes

<sup>1</sup> Although fees have increased commensurate with increased costs for providing services, actual revenues received are anticipated to vary dependent on the capitated reimbursement rates of Medicare.

# Library Fees





CITY OF  
**PALO  
ALTO**

## General

Fines & Penalties		
Billing Fee for Overdue Items	\$5.00 per item	
Collection Agency Processing Fee	\$10.00 per item	
Damaged and Lost Materials <i>Note: No daily overdue fee charged. However, items are billed for replacement cost if not returned or renewed within 42 days of due date.</i>	Cost of repair or replacement per item	
Damaged and Lost Materials - LINK+ <sup>1</sup>	\$115.00 per item	
Expired Hold Fee	\$1.00 per item	
Overdue Materials - In House Laptops <i>Note: \$9.00 maximum per item</i>	\$0.30 per hour	
Overdue Materials - LINK+ <sup>1</sup> <i>Note: \$10.00 maximum per item</i>	\$1.00 per day	
Replacement Library Card	\$1.00 each	
Rentals & Reservations		
Cancellation Fee	Up to 100% of fees paid	
	Resident Fee	Non-Resident Fee
Mitchell Park Library Community Room <sup>2</sup>	\$65.00 per hour	\$97.00 per hour
Mitchell Park Library Community Room - Full Day Rental <sup>2</sup>	\$324.00 per day	\$485.00 per day
Photography/Filming -Space rental fee <i>Note: Cost depends on space used, length of time, and staff time requirements</i>	\$100.00 - \$2000.00 per session	
Rinconada Library Community Room <sup>2</sup>	\$94.00 per hour	\$140.00 per hour
Rinconada Library Community Room - Full Day Rental <sup>2</sup>	\$469.00 per day	\$702.00 per day
Room Cleaning & Damage Deposit	\$300.00 - \$3,0000 per deposit	
Room Cleaning Fee - Add on	\$80.00 - \$500.00 per event	
Room Rental Furniture damage	Cost of repair or replacement per item	
Sales		
3-D Printing <i>Note: Cost depends on weight of item.</i>	\$2.00 - \$5.00 each	
Services		
Laser Prints - Black & White	\$0.15 per page	
Laser Prints - Color	\$0.50 per page	

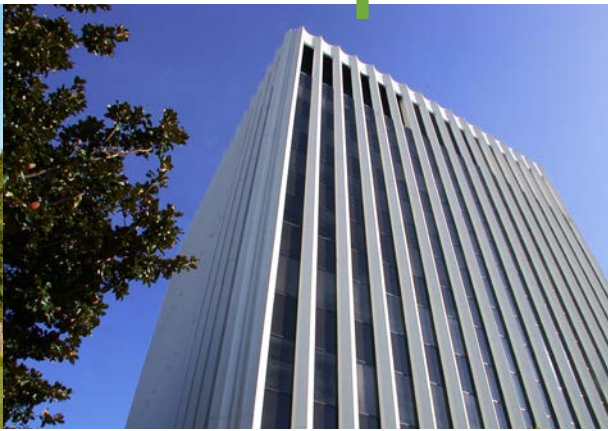


## Endnotes

<sup>1</sup> Fees are set by an external library consortium.

<sup>2</sup> Non-profit fees include a 50 percent discount to the existing fee structure.

# Office of Transportation Fees





CITY OF  
**PALO  
ALTO**

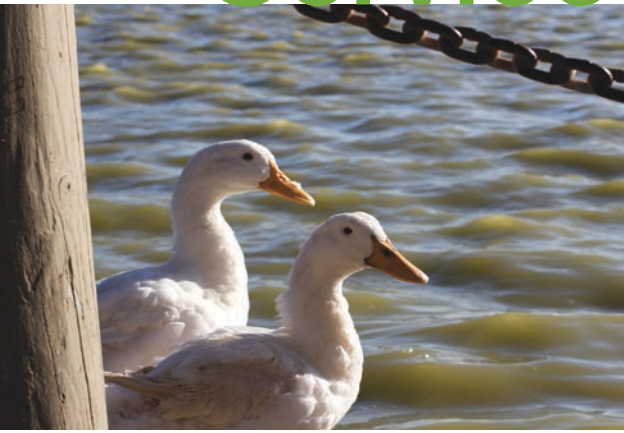
# Transportation

<b>Bicycle</b>	
Bicycle Training (or other training TBD)	\$17.00 - \$80.00 per class
<b>Parking Permit - Business District</b>	
All Downtown and SOFA - Wait List Registration	\$10.00 per occurrence
All Downtown and SOFA Garages and Lots - One Day Parking Permit	\$25.00 per day
All Downtown and SOFA Lots and Garages Annual Parking Permit	\$830.00 per year
California Avenue Area All Garages and Lots - Daily Parking Permit	\$25.00 per day
California Avenue Area All Garages and Lots Annual Parking Permit	\$620.00 per year
<b>Parking Permit - Commercial/Construction</b>	
Commercial/Construction - Wide Load/Heavy Vehicle	\$16.00 per occurrence
<b>Parking Permit - Residential</b>	
College Terrace RPP - Annual Resident Parking Permit	\$50.00 per year
College Terrace RPP Daily Resident Parking Permit	\$5.00 per day
Crescent Park NOP - Annual Resident Parking Permit	\$50.00 annually
Crescent Park NOP Daily Resident Parking Permit <i>Note: Per night</i>	\$5.00 each
Downtown RPP - Annual Resident Parking Permit	\$50.00 per year
Downtown RPP - Daily Employee Parking Permit	\$25.00 per day
Downtown RPP - Daily Resident Parking Permit	\$5.00 per day
Downtown RPP - Reduced-Price Employee Parking Permit <i>Note: Per six months</i>	\$50.00 each
Downtown RPP Full Price Employee Parking Permit <i>Note: Per six months</i>	\$415.00 each
Evergreen Park - Mayfield RPP Annual Resident Parking Permit	\$50.00 per year
Evergreen Park - Mayfield RPP Daily Employee Parking Permit	\$25.00 per day
Evergreen Park - Mayfield RPP Daily Resident Parking Permit	\$5.00 per day
Evergreen Park - Mayfield RPP Full Price Employee Parking Permit <i>Note: Per six months</i>	\$310.00 each
Evergreen Park - Mayfield RPP Reduced-Price Employee Parking Permit <i>Note: Per six months</i>	\$50.00 each
Old Palo Alto RPP - Annual Resident Parking Permit	\$50.00 per year
Old Palo Alto RPP - Daily Resident Parking Permit	\$5.00 each

## OFFICE OF TRANSPORTATION

Southgate RPP - Annual Resident Parking Permit	\$50.00 per year
Southgate RPP - Daily Employee Parking Permit	\$25.00 per day
Southgate RPP - Daily Resident Parking Permit	\$5.00 per day
Southgate RPP - Full Price Employee Parking Permit <i>Note: Per six months</i>	\$310.00 each
Southgate RPP - Reduced Price Employee Parking Permit <i>Note: Per six months</i>	\$50.00 each
Standard On-street Disabled Parking Space <i>Note: Per space for five years. The designation of an on-street parking with a blue curb is not for the exclusive use of the applicant or the property owner fronting this curb. Anyone with the appropriate license plate or placard may use the designated space.</i>	\$1,010.00 each

# Planning & Development Services Fees





CITY OF  
**PALO  
ALTO**

## Development Services - Building

Building Permit Fees	
Base Fee for all Trades <i>Note: For standalone and combination trade (electrical, mechanical, and plumbing) only permits</i>	\$132.40 per permit
Building Demolition Permit <i>Note: Price does not include C&amp;D Fees</i>	\$573.50 per permit
Building Permit Fee	1.50% of Construction Value for projects between \$1.00 to \$4,000,000.00; 1.0% of Construction Value for projects between \$4,000,000.01 to \$10,000,000; 0.5% of Construction Value for projects above \$10,000,000.00, progressively applied in a tier structure as value increases; if project is out of scope from a traditional building structure and/or additional services are required then an alternative fee arrangement may be established by the Chief Building Official to achieve cost recovery.
Commercial Interior Non-Structural Demolition Permit <i>Note: Price does not include C&amp;D Fees</i>	\$206.20 per permit
SB 1186 Mandated Fee	\$4.00 each
Work without a Permit	2 x building permit fee and plan review fee
Construction & Demolition	
Commercial and Multi-Family Projects greater than or equal to \$25,000.00 in Valuation	\$350.90 per permit
Single Family and Two Family Projects greater than \$25,000.00 and less than \$75,000.00 in Valuations <i>Note: Plus, if applicable, Construction &amp; Demolition Ordinance Fee in Refuse Fund under Special Fees.</i>	\$187.80 per permit
Single Family and Two Family Projects greater than \$75,000.00 in Valuation <i>Note: Plus, if applicable, Construction &amp; Demolition Ordinance Fee in Refuse Fund under Special Fees.</i>	\$241.10 per permit
Electrical Permits	
Air Conditioners	\$80.00 per unit
Busway, Power Duct, or Floor Duct <i>Note: Price per foot</i>	\$67.70 each
Conditional Meter Release (Conditional Utility Agreement)	\$270.90 each
Each Additional Meter (Group of 5)	\$176.50 per group
Fixtures, Switches, and Outlets (Group of 20)	\$67.70 per group
Generator	\$508.90 each
Lighting, Power and/or Control Panel Board, Switchboard Cabinet or Panel	\$80.00 each
Motor (Groups of 10)	\$67.70 per group
Range, Electric Clothes Dryer, or Water Heater (Groups of 5)	\$67.70 per group
Service Conductor/Switch - Greater than 800 ampre	\$634.10 each



## PLANNING AND DEVELOPMENT SERVICES

Service Conductor/Switch - Less than 800 ampre	\$422.70 each
Special Circuit (Not Listed Herein; Groups of 10)	\$67.70 per group
Temporary Power Pole	\$67.70 each
Temporary Wiring for Construction	\$67.70 per permit
<b>Electrical Permits - Electrical Vehicle Charging Stations</b>	
Commercial (Level 1 and 2)	\$410.40 plus \$77.00 for each additional station
Commercial (Level 3 and 4)	\$490.40 plus \$96.40 for each additional station
Residential (Level 1 and 2)	\$177.50 per station
Residential (Level 3)	\$269.80 per station
<b>Electrical Permits - Photovoltaic Systems</b>	
Commercial System (10kW - 49kW)	\$642.30 each
Commercial System (greater than 49kW)	\$861.80 each
Commercial System (less than 10 kW)	\$642.30 each
Residential Systems (greater than 10kW)	\$297.50 each
Residential Systems (less than 10kW)	\$189.80 each
<b>General &amp; Miscellaneous Fees</b>	
Address Change <i>Note: Price for first address change; \$274 each additional.</i>	\$581.70 per address
All Other Publications	\$17.40 each
Awnings - Residential & Commercial (Groups of 5)	\$80.00 per group
Bathroom Remodel (Non-Structural)	\$321.10 each
Deck <i>Note: New or repair.</i>	\$241.10 for up to 1,000 sf and \$80.00 for each additional 1000 sf
Doors, windows and skylights (Group of 5) <i>Note: Structural; commercial and residential.</i>	\$321.10 per group
Doors, windows, and skylights (Group of 10) <i>Note: Non-structural; commercial and residential; new and alteration.</i>	\$161.10 per group
Dryrot Repair/Replacement	\$80.00 each
Electric Service and Safety Inspection	\$225.70 per hour
Extension of Building Permit or Building Permit Application	\$90.30 per application
Fees not Listed	Fees will be either based on applicable hourly rate or based on valuation
Green Building Special Inspector <i>Note: Reviews applications and qualifications for certification.</i>	\$454.50 for internal review and \$226.70 for renewal update
Inspection Guidelines <i>Note: Available free online</i>	\$43.10 each
Inspections and Investigations - Outside Normal Business Hours <i>Note: Rate is determined based on the time work is scheduled in relation to City labor agreements. Two hour minimum.</i>	\$424.80 or \$567.40 per hour

## PLANNING AND DEVELOPMENT SERVICES

Inspections and Investigations - Unclassified <i>Note: Inspections and investigations for which no fee is specifically indicated (2-hour minimum).</i>	\$283.20 per hour
Kitchen Remodel (non structural)	\$241.10 each
Miscellaneous Planning Plan Check & Inspection	\$221.60 per hour
Progress & Partial Inspections <i>Note: up to 20 minutes inspection</i>	\$63.60 per inspection
Reactivation of Expired Building Permit - All Others	50% of original Building Permit Fee not to exceed the full cost to perform remaining inspections as determined by the Chief Building Official
Reactivation of Expired Building Permit - Final Inspection Only	\$294.50 or 50% of original Building Permit Fee, whichever is less
Reactivation of Expired Building Permit Application	\$179.60 per permit plus Plan Check Fees as applicable
Real Property Research Fee (1-hour minimum)	\$263.70 per hour
Records Retention	\$6.60 per plan sheet
Reinspection Fee - Multi-Family Residential and Non-Residential <i>Note: up to 20 minutes inspection</i>	\$157.00 each
Reinspection Fee - Single Family Residential <i>Note: primary 40 minutes; secondary 20 minutes</i>	\$87.20 each secondary inspection type; \$162.10 each primary inspection type
Request for Release of Building Plans <i>Note: Priced per request</i>	\$88.20 each
Re-Roof (Commercial & Multifamily)	\$321.10 for first 5,000 sf and \$80.00 for each additional 2,500 sf
Re-Roof (Residential Overlay)	\$80.00 per permit
Re-Roof (Residential)	\$321.10 per permit
Retaining Walls	\$106.70 for first 100 LF and \$53.40 for each additional 100 LF
Siding Repair/Replacement <i>Note: commercial and residential</i>	\$161.10 each
Sign Permit (Group of 5)	\$133.40 each
Special Inspection - Materials Testing Lab Certification <i>Note: special inspection up to 4 hours</i>	\$1,818.10 per inspection
Stucco Repair/Replacement <i>Note: commercial and residential</i>	\$241.10 each
Utilities Plan Review	\$133.40 per permit
<b>Green Building</b>	
Alterations and additions for single and multifamily > 1,000 sq ft	\$838.20 per permit
Alterations and additions for single family and multifamily < 1,000 sq ft and increases conditioned space	\$507.90 per permit
If the project is over \$100,000 Energy Star is required after 12 months of occupancy	\$165.20 per permit

## PLANNING AND DEVELOPMENT SERVICES

Landscape Inspection	\$218.50 per permit
Landscape Plan Review - Non-Residential & Multi-Family	\$2,232.60 per permit
Landscape Plan Review - Single Family Residential	\$1,372.80 per permit
Multi Family New Construction of 1-3 (attached) units	\$1,092.70 per permit
Multi Family New Construction of 4 or More	\$1,753.40 per permit
New Commercial >50,000 SF	\$2,084.80 per permit
New Commercial 1,000-25,000 SF	\$1,423.10 per permit
New Commercial 25,001 - 50,000 SF	\$1,753.40 per permit
New Single Family	\$1,092.70 per permit
Tenant improvements, renovations or alterations > 5,000 SF <i>Note: includes replacement or alteration of at least two of the following: HVAC systems, building envelope, hot water system, or lighting system and project greater than \$200,000</i>	\$762.30 per permit
<b>Mechanical Permits</b>	
Air Handlers up to and including 10,000 cfm	\$54.40 each
Boilers, Compressors, and Absorption Systems	\$106.70 each
Furnace, Flue and Associated Ducts	\$106.70 per permit
Miscellaneous <i>Note: Price for each appliance or piece of equipment regulated by this code, but not classed in other appliance categories, or for which no other fee is listed.</i>	\$54.40 each
Process Piping System	\$53.40 per permit
Process Piping System - Hazardous	\$54.40 per permit
Swimming Pool Heater	\$63.60 per permit
Ventilation and Exhaust	\$54.40 each
<b>Parking Permit - Commercial/Construction</b>	
Commercial/Construction - Building/Relocation (City) <i>Note: Plus cash deposit or bond</i>	\$753.10 each
Commercial/Construction - Building/Relocation (Outside City) <i>Note: Plus cash deposit or bond</i>	\$146.70 each
On-Street Parking Space Rental <i>Note: Per space</i>	\$25.00 per day
Parking Space Closure (on-street, lots, and garages) <i>Note: Per space</i>	\$25.00 per day
RPP Zone Temporary Work Parking Permit	\$100.00 per month
<b>Plan Review Fees</b>	
Additional Plan Review <i>Note: Required by changes, additions, or revisions to plans including Alternative Means and Methods (2-hour minimum). For Elective (3rd party) and over-the-counter reviews (half hour minimum).</i>	\$219.60 per hour

## PLANNING AND DEVELOPMENT SERVICES

Building Plan Check	75% of Building Permit Fee for projects between \$1.00 to \$4,000,000; 50% of Building Permit Fee for projects between \$4,000,000.01 to \$10,000,000; 25% of Building Permit Fee for projects above \$10,000,000, progressively applied in a tier structure as value increases.
Certified Access Specialist (CASp) Review/Consultation	\$422.70 per hour
Elective Plan Check	35% of Building Plan Check fee
Fire and Life Safety Plan Check	54% of Building Permit Fee for projects between \$1.00 to \$4,000,000; 35% of Building Permit Fee for projects between \$4,000,000.01 to \$10,000,000; 18% of Building Permit Fee for projects above \$10,000,000, progressively applied in a tier structure as value increases.
Public Works Plan Check	44% of Building Permit Fee for projects between \$1.00 to \$4,000,000; 30% of Building Permit Fee for projects between \$4,000,000.01 to \$10,000,000; 15% of Building Permit Fee for projects above \$10,000,000, progressively applied in a tier structure as value increases.
Zoning Plan Check	35% of Building Permit fee
<b>Plumbing Permits</b>	
Atmospheric-type vacuum Breakers	\$132.40 each
Backflow protective device other than atmospheric-type	\$191.90 each
Building Sewer Line Replacement	\$129.30 per permit
Gas Piping System	\$191.90 per permit
Industrial Waste Pretreatment Interceptor <i>Note: Including trap and vent, except kitchen-type grease interceptors functioning as fixture traps</i>	\$191.90 each
Medical Gas Piping System	\$191.90 per permit
Plumbing Fixtures (Groups of 5) <i>Note: For each plumbing fixture on one trap or a set of fixtures on one trap (including water, drainage piping, and backflow protection therefore).</i>	\$133.40 per group
Solar Hot Water System	\$191.90 each
Storm Drain System	\$191.90 each
Swimming Pool	\$63.60 each
Water Heater, Vent or Other	\$97.50 each
Water Piping <i>Note: Installation, alteration or repair of water piping, water treatment equipment or both</i>	\$97.50 per permit
<b>Plumbing Permits - Graywater Systems</b>	
Clotheswasher System	\$80.00 per permit
Complex System <i>Note: Plus plan review at cost</i>	\$191.00 each plus plan review at cost
Simple System <i>Note: Plus plan review at cost</i>	\$80.00 each plus plan review at cost

## PLANNING AND DEVELOPMENT SERVICES

### SB 1473 Fee

A. \$1.00 - \$25,000.00 Permit Valuation <i>Note: per unit increment</i>	\$1.00 per unit
B. \$25,001.00 - \$50,000.00 Permit Valuation <i>Note: per unit increment</i>	\$2.00 per unit
C. \$50,001.00 - \$75,000.00 Permit Valuation <i>Note: per unit increment</i>	\$3.00 per unit
D. \$75,001.00 - \$100,000.00 Permit Valuation <i>Note: per unit increment</i>	\$4.00 per unit
E. Each \$25,000.00 Increment or Fraction Thereof Above \$100,000.00 <i>Note: per unit increment</i>	\$1.00 per unit
F. Minimum	\$1.00 each

### Strong Motion Instrument Program

Commercial	\$28.00 per \$100,000.00 permit valuation (\$0.50 minimum)
Residential	\$13.00 per \$100,000.00 permit valuation (\$0.50 minimum)

### Use & Occupancy Permits

Certificate of Use and Occupancy	\$1,261.00 each
Certificate of Use and Occupancy - Replacement	\$262.70 each
Temporary Occupancy Permit - Multi-Family Residential, Non-Residential, and Other Commercial	\$951.10 each
Temporary Occupancy Permit - Single Family Residential and Commercial Tenant Improvement less than 10,000 sq. ft.	\$697.70 each

## Development Services - Public Works

### Encroachment Permit

A. Dumpster, Container	\$344.00 each
B. Non-Residential - Single Day	\$1,385.00 each
C. Non-Residential Short-Term (Less than 5 days)	\$1,619.00 each
D. Non-Residential Long-Term (More than 5 days)	\$2,226.00 each
E. Additional Non-Residential Long-Term (More than 5 days) Monthly	\$786.00 per month

### Engineering

A. 101 - 1,000 cubic yards	\$218.00 for the first 100 cubic yards, plus \$218.00 for each additional 100 cubic yards or fraction thereof
B. 1,001 - 10,000 cubic yards	\$2,180.00 for the first 1,000 cubic yards plus \$205.00 for each additional 1,000 cubic yards or fraction thereof

## PLANNING AND DEVELOPMENT SERVICES

C. 10,001 or more cubic yards	\$4,230.00 for the first 10,000 cubic yards plus \$798.00 for each additional 10,000 cubic yard or fraction thereof
<b>General &amp; Miscellaneous Fees</b>	
Miscellaneous Public Works Inspection	\$216.00 per hour
Miscellaneous Public Works Plan Check	\$254.00 per hour
<b>Inspection Fees</b>	
Tree Inspection for Private Development	\$161.00 per inspection
Wet Season Construction Site Stormwater Inspection <i>Note: MRP requirement for sites &gt;1 acre and/or high priority (hillside, near creek, prior violation)</i>	\$309.00 per inspection plus \$101.00 per hour thereafter, charged monthly October thru April.
<b>Map/Plan Review Fees</b>	
Architectural Review - Minor Project Trees (ARB Review)	\$1,189.00 per application
Architectural Review - Minor Project Trees (Staff Review)	\$229.00 per hour
<b>Permit Fees</b>	
1. Temporary Discharge to Storm Drain from Non-Exclusionary Construction Site Dewatering <i>Note: Per request to discharge</i>	\$15,710.00 each
2. Additional Temporary Discharge to Storm Drain from Non-Exclusionary Construction Site Dewatering <i>Note: Per PAMC 16.28.155</i>	\$345.00 per week for the duration of dewatering activities
A. Construction in Public Right-of-Way (\$1.00 - \$5,999) <i>Note: Including public or private subdivision streets</i>	\$721.00 per occurrence
B. Construction in Public Right-of-Way (\$6,000 - \$25,999) <i>Note: Including public or private subdivision streets</i>	\$741.00 + 9.3% of value greater than \$6,000.00
C. Construction in Public Right-of-Way (\$26,000 - \$100,999) <i>Note: Including public or private subdivision streets</i>	\$2,581.00 + 11.8% of value greater than \$26,000.00
D. Construction in Public Right-of-Way (\$101,000 +) <i>Note: Including public or private subdivision streets</i>	\$11,431.00 + 9.3% of value greater than \$100,000.00
Polychlorinated Biphenyls (PCBs) Permit Review Fee	\$410.00 per review (up to 2 hours) plus \$172.00 per hour thereafter
Right of Way Closure Management <i>Note: Price per closure</i>	\$89.00 each
Storm Drain Plan Check Fee <i>Note: Priced per project</i>	\$1,043.00 each

## Development Services - Fire

<b>Compliance Fees</b>	
Emergency Response Fee - Hazmat (PAMC 17.24.050)	\$402.20 per hour

## PLANNING AND DEVELOPMENT SERVICES

Installation or Closure Without Approved Plans and/or Permits	\$317.00 - \$936.70 average fee range
<b>Documents</b>	
Emergency Planning Guide	\$291.40 each
Long-term Offsite Document Storage	\$0.30 per page
Microfilm Copy/Print	\$3.58 per blueprint page; \$0.33 per specification/calculation page
Photographs	\$32.80 first print; \$0.60 each additional print
<b>General &amp; Miscellaneous Fees</b>	
Miscellaneous Fire Prevention Plan Check	\$219.60 per hour
<b>Hazardous Materials Classification Permits</b>	
Compressed Gas	\$403.20 annually
Corrosives	\$403.20 annually
Cryogenic Fluid	\$403.20 annually
Flammable and Combustible Liquids	\$403.20 annually
Flammable Gas	\$403.20 annually
Flammable Solids	\$403.20 annually
Health Hazard (Liquids & Solids)	\$403.20 annually
Liquefied Petroleum Gases	\$403.20 annually
Organic Coatings	\$403.20 annually
Organic Peroxides	\$403.20 annually
Other Hazardous Materials - Unclassified <i>Note: Inspections and investigations for which no fee is specifically indicated (1-hour maximum)</i>	\$403.20 annually
Ovens - Industrial Baking or Drying	\$403.20 annually
Oxidizers (Liquids & Solids)	\$403.20 annually
Oxidizing Gas	\$403.20 annually
Pyrophoric Gas	\$403.20 annually
Pyrophoric Materials (Liquids & Solids)	\$403.20 annually
Pyrotechnical Special Effects Material	\$403.20 annually
Radioactive Materials	\$403.20 annually
Refrigeration Equipment	\$403.20 annually
Spraying/Dipping	\$403.20 annually
Tire Recapping/Tire Storage	\$1,607.70 annually
Toxic, Highly Toxic, Moderately Toxic, Health Hazard Gas <i>Note: Includes pesticides, fumigants, and etiologic agents.</i>	\$403.20 annually
Toxic, Highly Toxic, Moderately Toxic, Health Hazard Materials	\$403.20 annually

## PLANNING AND DEVELOPMENT SERVICES

Unstable Reactive Gas	\$403.20 annually
Unstable Reactive Materials (Liquids & Solids)	\$403.20 annually
Water Reactive Materials (Liquids & Solids)	\$403.20 annually
<b>Hazardous Materials Storage Permits</b>	
Additional Approvals for Hazardous Materials Storage Permit <i>Note: Additional approval for permit to construct, temporary closure, permanent closure, otherwise modify a hazardous materials storage facility. See CEQA for additional fees.</i>	\$876.20 per occurrence plus \$573.50 per hour for time above two hours
Business Plan (HMBP)	\$573.50 per location
Late Fee for Hazardous Materials Storage Permit	25% of total Hazardous Material permit fee
Level I Facility <i>Note: Annual amount. Includes 1 hr of inspection time. Minimal storage as defined by having no hazardous materials over CFC permit amounts as specified in CFC section 105.</i>	\$403.20 per location
Level II Facility <i>Note: Annual amount plus other hazardous materials classification permit if applicable. Includes 2 hrs of inspection time. For quantities exceeding CFC permit threshold, but are less than 50 gal., 500lbs or 200 cu. ft. Category also includes dry cleaning, fixed medical gas, auto or aircraft repair, and service stations.</i>	\$809.50 per location
Level III Facility <i>Note: Annual amount plus other hazardous materials classification permit if applicable. Includes 4 hrs inspection time. For quantities that exceed 50 gal., 500lbs, or 200 cu. ft. and are not categorized as Level II.</i>	\$1,619.00 per location
Petroleum Aboveground Storage Tank <i>Note: Includes 2 hrs inspection time.</i>	\$809.50 annually
Provisional (6 Month) <i>Note: Plus other hazardous materials classification permit fees if applicable. Includes 2 hrs inspection time.</i>	\$809.50 each
<b>Inspection Fees</b>	
Additional Inspection or Reinspection Fee	\$805.40 for up to 2 hours reinspection plus \$401.20 per hour (during business hours)
After Hours Inspection Fee <i>Note: 4 hour minimum. Fee for before or after normal business hours; weekends and holidays included. Fee is to be paid in advance of inspection.</i>	\$603.30 per hour
As-Built Plan Check and Additional Work <i>Note: Priced per review</i>	\$805.40 each
Care Facility Inspection Including Fire Clearance	\$401.20 per inspection for facilities with 7-25 clients; \$805.40 per inspection for facilities with more than 25 clients
Christmas Tree Lot/Pumpkin Patch	\$401.20 each
High Rise Building - Certificate of Compliance <i>Note: Certificate of compliance inspection for each high rise building which is required by state law to be inspected and certified annually as meeting minimum compliance with applicable state of California fire and life safety standards for existing high rise buildings (CFC 111.4.3).</i>	\$1,676.50 annually for up to 4 hours; \$401.20 for each additional hour
Outside Cooking Booths/Food Trucks	\$603.30 each
Standby Fire Watch	\$401.20 per hour



## PLANNING AND DEVELOPMENT SERVICES

Temporary Occupancy Permit for Vendors/Stock Occupancy <i>Note: requires at least one additional inspection</i>	\$1,295.80 per occurrence
Use and Occupancy Fire Inspection	\$401.20 per inspection
<b>Investigations &amp; Consultations</b>	
Additional Hours Over Plan Review/Inspection	\$287.30 per hour
Alternate Means and Methods Application <i>Note: 2 hr maximum.</i>	\$858.80 per application
Appeals to Decisions	\$401.20 per hour
Consultation Fee	\$401.20 per hour
Emergency Responder Radio Coverage Testing Fee	\$567.40 each
Hydrant Flow Fee	\$401.20 per occurrence
<b>Life Safety &amp; Fire Protection</b>	
Hydrant Installation/Modification - Private	\$202.10 per device
Automatic Fire Sprinkler Installation/Modification <i>Note: Includes hydrostatic test</i>	\$897.80 for 1-19 Sprinkler Heads; \$1,985.30 plus \$3.30 per head for 20 or more Sprinkler Heads
Express Fire Protection Plan Check Fee	\$200.10 per occurrence
Fire Alarm System Installation and Modification	\$1,091.70 plus \$24.60 a device or contract point
Fire and Life Safety Plan Check - Commercial	54% of Building Permit Fee for projects between \$1.00 to \$4,000,000; 35% of Building Permit Fee for projects between \$4,000,000.01 to \$10,000,000; 18% of Building Permit Fee for projects above \$10,000,000, progressively applied in a tier structure as value increases.
Fire Prevention Inspection of Private Schools	\$805.40 annually
Fire Protection and Fire Access Plan Review for New Single Family Dwellings or Additions	\$890.60 each
Multifamily dwellings, hotels & motels 51-100 units	\$805.40 annually
Multifamily dwellings, hotels & motels greater than 100 units	\$1,206.60 annually
Multifamily dwellings, hotels, motels 4-50 Units	\$401.20 annually
Other Automatic Fire Extinguishing System <i>Note: Includes hood and duct, FM 200, Inergen, and CO2. If a system has a release panel, Fire Alarm fees apply as well.</i>	\$1,091.70 per occurrence
Site Disaster Planning	\$401.20 per hour
Standpipe System - Wet, Dry, or Combination <i>Note: Priced per riser</i>	\$805.40 each
Temporary Certificate of Occupancy	\$871.10 per occurrence
Underground Fire Service Line <i>Note: Includes 4 hrs of inspection and 1 hr of plan check</i>	\$1,896.00 per occurrence
Verification of Fire Protection System Maintenance and Certification	\$73.90 annually
<b>Specific Hazard Permits</b>	
Candles and Open Flames in Assembly Areas	\$401.20 annually

## PLANNING AND DEVELOPMENT SERVICES

Hot Work (Welding) Operations	\$450.40 each
Liquid or Gas-Fueled Powered Equipment/Generator	\$401.20 each
Occupant Load Increase - Temporary Public Assembly	\$401.20 each
Operate a Tank Vehicle to Transport Flammable/Combustible Liquids <i>Note: Priced per vehicle</i>	\$570.50 each
Place of Assembly	\$809.50 per occurrence
Place of Public Assembly - Temporary	\$401.20 each
Tent or Air Supported Structure <i>Note: Tent or air-supported structure having an area in excess of 200 sq. ft. or canopies in excess of 400 sq. ft. Fee includes a public assembly permit of \$125.00 for all tents.</i>	\$844.40 each

## Planning

<b>Appeals and Legal Review Fees</b>	
Appeal Costs Exceeding Appeals Filing Fee <i>Note: Initial deposit plus any applicable Other Application fees. All costs will be recovered from the applicant in the event that an appeal is filed by a third party and the appeal is upheld and in the event that the applicant files an appeal that is denied.</i>	\$3,910.00 per deposit
Appeals and Request for Hearing before City Council or Planning & Transportation Commission <i>Note: The fee is refunded if the City Council chooses not to hear an appeal. Also, the fee shall not be charged if a fee for Director's Hearing has been paid.</i>	\$610.50 per application
Legal Review (Legislative review, zone change, plan amendment, etc.)	\$13,041.50 each
Legal Review ARB Major	\$6,973.10 each
Legal Review Environmental	\$12,302.80 each
Legal Review for Additional Hearings	Additional hearings are charged at 1/3 of the applicable fee.
Legal Review Mitigation Monitoring - Environmental Impact Report	\$652.50 per application
<b>Architectural Review</b>	
Architectural Review - Major Project <i>Note: Initial deposit plus Legal Review fees and applicable Other Application fees. 100 percent of processing costs will be recovered plus any Environmental Impact Assessment and any other entitlements necessary to complete the project, whether indicated as 100 percent cost recovery in this schedule or not.</i>	\$13,380.00 per deposit
Architectural Review - Minor Project (ARB Review) <i>Note: Plus applicable Other Application fees</i>	\$9,073.00 each
Architectural Review - Minor Project (Staff Review) <i>Note: Plus applicable Other Application fees</i>	\$3,483.30 each

## PLANNING AND DEVELOPMENT SERVICES

Design Enhancement Exception <i>Note: Plus applicable Other Application fees</i>	\$7,226.00 each
Preliminary Review <i>Note: Plus applicable Other Application fees</i>	\$7,105.10 each
Signs - (ARB Review) <i>Note: Plus applicable Other Application fees. (Master Sign Program)</i>	\$4,550.30 per application
Signs - (Exceptions) <i>Note: Plus applicable Other Application fees</i>	\$4,749.40 per application
Signs, Minor Facade Changes, Landscaping, Accessory Structures, or Similar Minor Changes to a Building Exterior - (Staff Review) <i>Note: Plus applicable Other Application fees</i>	\$1,088.60 per application
Temporary Sign Permit <i>Note: Per 15 days plus applicable Other Application fees</i>	\$201.10 each
<b>Comprehensive Plan Change</b>	
Comprehensive Plan Change <i>Note: Initial deposit. 100 percent of processing costs will be recovered plus any Environmental Impact Assessment and any other entitlements necessary to complete the project, whether indicated as 100 percent cost recovery in this schedule or not.</i>	\$7,973.00 per deposit
Comprehensive Plan Maintenance Fee <i>Note: Per \$1,000 of construction valuation. Collected at Building Permit issuance.</i>	\$1.10 each
<b>Development Agreement</b>	
Development Agreement <i>Note: Initial deposit plus Legal Review fees and applicable Other Application fees. 100 percent of processing costs will be recovered plus any Environmental Impact Assessment and any other entitlements necessary to complete the project, whether indicated as 100 percent cost recovery in this schedule or not.</i>	\$9,200.00 per deposit
Development Agreement - Annual Review <i>Note: Initial deposit plus Legal Review fees and applicable Other Application fees. 100 percent of processing costs will be recovered.</i>	\$3,221.00 per deposit
<b>Director's Approval</b>	
Home Improvement Exception <i>Note: Plus applicable Other Application fees</i>	\$4,052.70 each
Planning Fee Waiver	At the recommendation of the Planning and Development Services Director, the City Manager may waive all or a portion of a Planning fee when the applicant is a non-profit organization or another governmental entity, and the following findings can be made: (1) the proposed project would advance a public purpose benefiting the residents of Palo Alto; and (2) General Fund support is available to back-fill the fee(s) waived. The City Manager will report annually to the City Council about fee waivers granted pursuant to this provision as part of the closing of the budget. Impact fees are not eligible for this waiver.
<b>Documents &amp; Photocopies</b>	
Administrative Extensions and Zoning Letters	Applicable hour rate/1 hr. minimum

# PLANNING AND DEVELOPMENT SERVICES

Comprehensive Plan <i>Note: Plus mailing costs</i>	\$407.30 each
Property Research requiring more than 30 minutes	Applicable hourly rate/1 hr. minimum
Zoning Map Booklet <i>Note: Plus mailing costs</i>	\$118.00 each
<b>Environmental Impact Assessment</b>	
CEQA Categorical Exemption	\$588.90 each
Environmental Document (Consultant Prepared) <i>Note: If estimated costs exceed \$100,000, alternative deposit and payment schedule arrangements may be made at the discretion of the Planning and Development Services Director. 100 percent of processing costs will be recovered.</i>	Initial deposit of 100 percent of estimated costs due upon application plus 25% for contract administration and applicable Legal Review fees and Other Application fees
Environmental Document (Staff prepared) <i>Note: Initial deposit plus any applicable Other Application fees. 100 percent of processing costs will be recovered plus any other entitlements necessary to complete the project, whether indicated at 100 percent cost recovery in this schedule or not.</i>	\$6,518.00 per deposit
Environmental Impact Assessment - Mitigated Negative Declaration	Initial deposit of 100 percent of estimated costs due upon application plus 25% for contract administration and applicable Legal Review and Other Application fees.
Mitigation Monitoring - Environmental Impact Report <i>Note: Initial deposit plus applicable Other Application fees. 100 percent of processing costs will be recovered, including any charges for specialized consultants</i>	\$4,784.00 per deposit
Mitigation Monitoring - Mitigated Negative Declaration <i>Note: Initial deposit plus applicable Other Application fees. 100 percent of processing costs will be recovered, including any charges for specialized consultants</i>	\$1,594.00 per deposit
<b>Historic Resource</b>	
Demolition Application for Historic Buildings <i>Note: Plus applicable Other Application fees</i>	\$1,305.10 each
Historic Resource Review - Major Project <i>Note: Plus applicable Other Application fees</i>	\$1,957.60 each
Historic Resource Review - Minor Project (Staff Review) <i>Note: Plus applicable Other Application fees</i>	\$1,305.10 each
Historic Resource Review of Individual Review Application <i>Note: Plus Individual Review fees and applicable Other Application fees</i>	\$326.30 each
Mills Act Contract - Establish or Withdraw <i>Note: Initial deposit plus Legal Review fees and applicable Other Application fees. 100 percent of processing costs will be recovered.</i>	\$2,392.60 per deposit
Transfer of Development Rights Projects <i>Note: Initial deposit plus Legal Review fees. 100 percent of processing costs will be recovered plus any Environmental Impact Assessment and any other entitlements necessary to complete the project, whether indicated as 100 percent cost recovery in this schedule or not.</i>	\$774.60 per deposit
Williamson Act Contract - Establish or Withdraw <i>Note: Initial deposit plus any applicable Other Application fees. 100 percent of processing costs will be recovered plus any Environmental Impact Assessment and any other entitlements necessary to complete the project, whether indicated as 100 percent cost recovery in this schedule or not.</i>	\$2,513.70 per deposit

## PLANNING AND DEVELOPMENT SERVICES

Individual Review	
Expansion of Existing Two-Story greater than 150 sq. ft. <i>Note: Plus applicable Other Application fees and any other entitlements necessary to complete the project, including historic review</i>	\$7,352.30 each
Individual Review - Minor Revisions to Approved Projects <i>Note: Plus cost of notices</i>	\$3,820.80 each
Individual Review Refund Fee <i>Note: This fee recovers the cost of staff time to calculate and process the refund due when an applicant decides to withdraw an IR application. The refund will be further reduced by the cost of effort spent on the project prior to withdrawal.</i>	2 hr. applicable hourly rate
New Two-Story Addition or New Two-Story Home <i>Note: Plus applicable Other Application fees and any other entitlements necessary to complete the project, including historic review</i>	\$9,184.80 each
Preliminary Individual Review with Architect	\$489.40 per occurrence
Other Application Fees	
Contract Administration <i>Note: 25% Contract Administration and project management costs are in addition to direct costs of consultant services and will be charged to deposit-based fees.</i>	25 percent of direct cost
Planning Compliance Fee <i>Note: Note: 100 percent of processing costs will be recovered plus any Environmental Impact Assessment and any other entitlements necessary to complete the project, whether indicated as 100 percent cost recovery in this schedule or not.</i>	Initial deposit equal to 3 hrs of applicable staff rate
Pre-Screening fee <i>Note: Initial deposit plus any applicable Legal Review and Other Application fees. All costs will be recovered for the prescreening of applicants proposing rezoning, zoning text amendments, development agreements, Comp Plan amendments, or specific plans.</i>	\$3,910.00 per deposit
Public Noticing - 150 ft. Radius <i>Note: If noticing is required. Covers cost of up to three rounds of noticing.</i>	\$667.90 each
Public Noticing - 600 ft. Radius <i>Note: If noticing is required. Covers cost of up to three rounds of noticing.</i>	\$1,172.70 each
Public Noticing beyond 600 ft. Radius	\$1,563.60 each
Recording Fee with County	County cost of recording, if required
Records Retention <i>Note: Per plan sheet</i>	\$6.60 each
Site & Design	
Site and Design Major <i>Note: Initial deposit plus any Legal Review fees and applicable Other Application fees. 100 percent of processing costs and legal costs will be recovered plus any Environmental Impact Assessment and any other entitlements necessary to complete the project, whether indicated as 100 percent cost recovery in this schedule or not.</i>	\$29,358.00 per deposit
Subdivision - Five or More Parcels	
Subdivision Final Map <i>Note: Plus any applicable Other Application fees</i>	\$6,077.00 each

## PLANNING AND DEVELOPMENT SERVICES

<b>Tentative Map</b>	
<i>Note: Initial deposit plus Legal Review fees and applicable Other Application fees. 100 percent of processing costs will be recovered plus any Environmental Impact Assessment and any other entitlements necessary to complete the project, whether indicated as 100 percent cost recovery in this schedule or not.</i>	\$11,238.00 per deposit
<b>Subdivision (Minor)</b>	
<b>Parcel Map</b> <i>Note: Plus any applicable Other Application fees</i>	\$5,082.80 each
<b>Preliminary Parcel Map, Minor</b> <i>Note: Plus Legal Review fees and applicable Other Application fees plus Environmental Impact Assessment fees</i>	\$6,089.30 each
<b>Subdivision (Minor) with Exception</b>	
<b>Parcel Map, Minor with Exception</b> <i>Note: Plus any applicable Other Application fees</i>	\$3,721.30 each
<b>Preliminary Parcel Map, Minor with Exception</b> <i>Note: Plus any applicable Other Application fees plus Environmental Impact Assessment fees</i>	\$9,630.00 each
<b>Use Permit</b>	
<b>Conditional Use Permit - additional upon hearing request</b> <i>Note: There is no fee to request a hearing; this fee represents the applicant's responsibility for the full cost of the hearing, regardless of who requests it, plus any applicable Other Application fees.</i>	\$12,571.60 each
<b>Conditional Use Permit - Director Level</b> <i>Note: Plus any applicable Other Application fees</i>	\$7,499.00 each
<b>Day Care Center</b>	\$186.00 each
<b>Temporary Use Permit - Minor</b> <i>Note: Plus any applicable Other Application fees</i>	\$1,489.80 each
<b>Variance</b>	
<b>Variance - additional upon hearing</b> <i>Note: There is no fee to request a hearing; this fee represents the applicant's responsibility for the full cost of the hearing, regardless of who requests it.</i>	\$12,571.60 each
<b>Variance - Director's Level</b> <i>Note: Plus any applicable Other Application fees</i>	\$4,790.40 each
<b>Wireless Permit</b>	
<b>Wireless Tier 1</b> <i>Note: Initial deposit plus any applicable Other Application fees. Refer to Municipal Code 18.42.110.</i>	\$3,483.00 per deposit
<b>Wireless Tier 2</b> <i>Note: Initial deposit plus any applicable Other Application fees. Refer to Municipal Code 18.42.110.</i>	\$7,499.00 per deposit
<b>Wireless Tier 3</b> <i>Note: Initial deposit plus any applicable Other Application fees. Refer to Municipal Code 18.42.110.</i>	\$7,964.00 per deposit
<b>Zone Change</b>	
<b>Planned Community Zone Change</b> <i>Note: Initial deposit. 100 percent of processing and legal costs will be recovered</i>	\$9,570.00 per deposit

## PLANNING AND DEVELOPMENT SERVICES

Planned Community Zone Change - Minor Change <i>Note: Initial deposit. 100 percent of processing and legal costs will be recovered</i>	\$1,956.00 per deposit
Zone Change Regular <i>Note: Initial deposit. 100 percent of processing and legal costs will be recovered</i>	\$7,973.00 per deposit

## Impact & In-Lieu Fees

Development Impact Fees - Non-Residential		
	Commercial/Industrial	Office/Institutional
General Government Facilities	Commercial: \$801.00 per 1,000 sq. ft. or fraction thereof; Industrial: \$267.00 per 1,000 sq. ft. or fraction thereof	\$1,070.00 per 1,000 sq. ft. or fraction thereof
Public Safety Facilities	Commercial: \$636.00 per 1,000 sq. ft. or fraction thereof; Industrial: \$213.00 per 1,000 sq. ft. or fraction thereof	\$849.00 per 1,000 sq. ft. or fraction thereof
	Commercial/Industrial	Hotel/Motel
Community Center Impact Fee	\$314.00 per 1,000 sq. ft. or fraction thereof	\$142.00 per 1,000 sq. ft. or fraction thereof
Library Impact Fee	\$299.00 per 1,000 sq. ft. or fraction thereof	\$126.00 per 1,000 sq. ft. or fraction thereof
Park Impact Fee	\$5,564.00 per 1,000 sq. ft. or fraction thereof	\$2,516.00 per 1,000 sq. ft. or fraction thereof
	Office/R&D	Hotel/Retail/Other
Housing Impact Fee - Non-Residential	\$38.48 per sq. ft. Office/R&D	\$22.40 per sq. ft. Hotel, Retail, Other Non-residential
Development Impact Fees - Residential		
	Single Family	Multi-Family
Community Center Impact Fee <i>Note: ADUs under 750 sq ft exempt.</i>	\$3,499.00 per residence or \$5,086.00 per residence larger than 3,000 sq. ft.	\$2,235.00 per unit or \$1,128.00 per unit smaller than or equal to 900 sq. ft.
General Government Facilities <i>Note: ADUs under 750 sq ft exempt</i>	\$1,435.00 per unit	\$1,147.00 per unit
Housing Impact Fee - Residential <i>Note: Residential Housing Impact Fees apply to all residential rental development and mixed use projects with one or two residential ownership units</i>	\$21.99 per sq. ft. apartments (rentals)	



# PLANNING AND DEVELOPMENT SERVICES

Library Impact Fee <i>Note: ADUs under 750 sq ft exempt.</i>	\$1,187.00 per residence or \$1,766 per residence larger than 3,000 sq. ft.	\$710.00 per unit or \$390.00 per unit small than 900 sq. ft.
Park Impact Fee <i>Note: ADUs under 750 sq ft exempt</i>	\$13,103.00 per residence or \$19,565.00 per residence larger than 3,000 sq. ft.	\$8,577.00 per unit or \$4,337.00 per unit smaller than or equal to 900 sq. ft.
Public Safety Facilities <i>Note: ADUs under 750 sq ft exempt.</i>	\$1,139.00 per unit	\$912.00 per unit
Development In-Lieu Fees - Residential		
	Single Family	Multi-Family
Housing In-Lieu Fee - Residential <i>Note: In lieu fees for single family attached, single family detached, and condos apply to fractional units and in cases where the Council agrees to accept payment of fees in lieu of building affordable units on site. ADUs under 750 sq ft exempt.</i>	\$82.46 per sq. ft. Single family detached; \$54.97 per sq. ft. single family attached	\$54.97 per sq. ft. condos
Parking In-Lieu Fees		
Parking In-Lieu Fee for Downtown Assessment District <i>Note: Each parking space</i>	\$111,861.77 each	
Parkland Dedication Fee		
	Single Family	Multi-Family
Parkland Dedication Fee - In-Lieu Fee <i>Note: Only applies to residential projects that require a subdivision or parcel map. Land dedication is required for subdivisions resulting in more than 50 parcels. When parkland dedication applies, park impact fees do not apply.</i>	\$66,486.51 per unit	\$45,819.54 per unit
Parkland Dedication Fee - Land	531 sq. ft. per unit	366 sq. ft. per unit
Public Art In-Lieu Fee		
Public Art Fee <i>Note: Applies to new commercial buildings including new construction, remodels, additions, and reconstruction that have a floor area of 10,000 sq. ft. or more and a construction value of \$200,000.00 or more, and new residential projects of five units or more, with some exclusions.</i>	1 percent of first \$120.25 million construction valuation and 0.9 percent of construction valuation for valuation in excess of \$120.25 million	
Traffic Impact Fees		
Charleston Arastradero - Commercial <i>Note: ADUs exempt</i>	\$0.42 per square foot	
Charleston Arastradero - Residential <i>Note: Per residential unit</i>	\$1,435.00 per unit	
Citywide Transportation Impact Fee <i>Note: Per net new PM peak hour trip</i>	\$8,309.00 each	





CITY OF  
**PALO  
ALTO**

# Police Fees





CITY OF  
**PALO  
ALTO**

## General

Background Check		
Background Check - New <i>Note: Does not include DOJ Fingerprint and Rolling Processing Fee</i>	\$210.00 each	
Department of Justice Fingerprint and Rolling Fee	\$57.00 each	
FBI Fingerprint Fee	\$56.00 each	
OPM/DOD Background Check	\$5.00 per application	
False Alarm		
Alarm Registration Fee - New	\$55.00 each	
Alarm Registration Fee - Renewal	\$41.00 each	
A. Third False Alarm	\$137.00 each	
B. Fourth False Alarm	\$205.00 each	
C. Fifth and Each Subsequent False Alarm	\$257.00 each	
Impoundment Fees		
Vehicle Impoundment Fee	\$140.00 each	
Vehicle Repossession Receipt	\$15.00 each	
Miscellaneous		
Helicopter Landing Fee	\$66.00 per occurrence	
	For Profit Rate	Non-Profit Rate
One Day Liquor Permit Fee	\$55.00 per permit	\$41.00 per permit
Personnel Rates		
Emergency Response Fee	Actual costs to respond will be charged on a per incident basis	
Special Fees		
Clearance Letter	\$30.00 each	
Digital Media Reproduction Fee	\$55.00 each	
Location Crime Statistics Fee	\$72.00 each	
Offsite Document Retrieval	\$36.00 per item	
Parenting Project Materials	\$39.00 each	
Parenting Project Program	\$133.00 per family	
Report Copy Fee	\$13.00 each	
Research Fee	\$132.00 per hour	
Subpoena Fee	\$24.00 per hour	

## Animal Control

Animal Permits	
Boarding	\$182.00 per permit
Breeding Permit - Cat, Dog, or Bird	\$111.00 per permit
Dangerous Animal or Microchip	\$359.00 per permit
Kennel, Birds, or Animals	\$182.00 per permit
Livery Stable, Boarding Stable	\$182.00 per permit
Livestock	\$67.00 per permit
Pet Shop/Groomer	\$182.00 per permit
Pet Show or Fun Match	\$67.00 per permit
Pony Ride, Pony Ring	\$182.00 per permit
Riding Academy	\$182.00 per permit
Traveling Menagerie or Zoo	\$182.00 per permit
Disposal	
A. Dogs, Cats, Rabbits (up to 20 lbs) <i>Note: Fee for disposing of residents dead animal</i>	\$44.00 per pet
B. Dogs (up to 75lbs)	\$55.00 per pet
C. Dogs (76lbs and over)	\$67.00 per pet
D. Each Additional Animal	\$10.00 per pet
E. Small Animals and Birds	\$11.00 per pet
F. Large Animals (up to 150lbs) <i>Note: No animal over 150lbs will be accepted.</i>	\$123.00 per pet
G. Request for Transport of Owned Dead Animals up to 100lbs	\$50.00 per pet
Impoundment Fees - Cat	
A. First Offense	\$31.00 per occurrence
B. Second Offense	\$46.00 per occurrence
C. Third and Subsequent Offenses	\$62.00 per occurrence
Impoundment Fees - Dog - Licensed	
A. First Offense	\$31.00 per occurrence
B. Second Offense	\$46.00 per occurrence
C. Third Offense	\$62.00 per occurrence
D. Fourth Offense	\$113.00 per occurrence
E. Fifth to Tenth Offense	\$150.00 per occurrence
F. Eleventh and Subsequent Offenses	\$169.00 per occurrence

**Impoundment Fees - Dog - Unlicensed**

A. First Offense	\$51.00 per occurrence
B. Second Offense	\$78.00 per occurrence
C. Third Offense	\$97.00 per occurrence
D. Fourth Offense	\$128.00 per occurrence
E. Fifth to Tenth Offense	\$174.00 per occurrence
F. Eleventh and Subsequent Offenses	\$205.00 per occurrence

**Impoundment Fees - General**

Other Animals (Large) - Horse, Cow, Pig, Goat, etc.	\$103.00 per occurrence
Other Animals (Small) - Bird, Rabbit, Reptile, etc.	\$26.00 per occurrence
Special Impoundment Fee - Dog (Licensed)	\$103.00 per occurrence
Special Impoundment Fee - Dog (Unlicensed)	\$128.00 per occurrence
State Mandated Fees - First Offense	\$35.00 per occurrence
State Mandated Fees - Second Offense	\$50.00 per occurrence
State Mandated Fees - Third and Subsequent Offenses	\$100.00 per occurrence

## Special Event

**Personnel Rates**

A. Community Services Officer <i>Note: For those events where 100 percent of the proceeds go to a "profit" organization.</i>	\$93.00 per hour
A. Police Agent <i>Note: For those events where 100 percent of the proceeds go to a "profit" organization.</i>	\$204.00 per hour
A. Police Officer <i>Note: For those events where 100 percent of the proceeds go to a "profit" organization.</i>	\$171.00 per hour
A. Police Reserve <i>Note: For those events where 100 percent of the proceeds go to a "profit" organization.</i>	\$74.00 per hour
A. Police Sergeant <i>Note: For those events where 100 percent of the proceeds go to a "profit" organization.</i>	\$226.00 per hour
B. Community Services Officer <i>Note: For those events where less than 80 percent of the proceeds go directly to a "non-profit" organization.</i>	\$77.00 per hour
B. Police Agent <i>Note: For those events where less than 80 percent of the proceeds go directly to a "non-profit" organization.</i>	\$176.00 per hour

## POLICE

B. Police Officer <i>Note: For those events where less than 80 percent of the proceeds go directly to a "non-profit" organization.</i>	\$143.00 per hour
B. Police Reserve <i>Note: For those events where less than 80 percent of the proceeds go directly to a "non-profit" organization.</i>	\$61.00 per hour
B. Police Sergeant <i>Note: For those events where less than 80 percent of the proceeds go directly to a "non-profit" organization.</i>	\$193.00 per hour
C. Community Services Officer <i>Note: For those events where 80 percent or more of the proceeds go directly to a "non-profit" organization or events declared as co-sponsored by the City of Palo Alto.</i>	\$73.00 per hour
C. Police Agent <i>Note: For those events where 80 percent or more of the proceeds go directly to a "non-profit" organization or events declared as co-sponsored by the City of Palo Alto.</i>	\$154.00 per hour
C. Police Officer <i>Note: For those events where 80 percent or more of the proceeds go directly to a "non-profit" organization or events declared as co-sponsored by the City of Palo Alto.</i>	\$132.00 per hour
C. Police Reserve <i>Note: For those events where 80 percent or more of the proceeds go directly to a "non-profit" organization or events declared as co-sponsored by the City of Palo Alto.</i>	\$55.00 per hour
C. Police Sergeant <i>Note: For those events where 80 percent or more of the proceeds go directly to a "non-profit" organization or events declared as co-sponsored by the City of Palo Alto.</i>	\$170.00 per hour
<b>Special Fees</b>	
Special Event Permit Fee - 201 - 400 Attendees	\$277.00 per permit
Special Event Permit Fee - 401 - 600 Attendees	\$298.00 per permit
Special Event Permit Fee - Each additional 200 Attendees	\$44.00 each
Special Event Permit Fee - General	\$254.00 per permit
<b>Street Closure</b>	
Temporary Street Closure	\$122.00 - \$1,445.00 plus cost to provide certain services

## Licenses

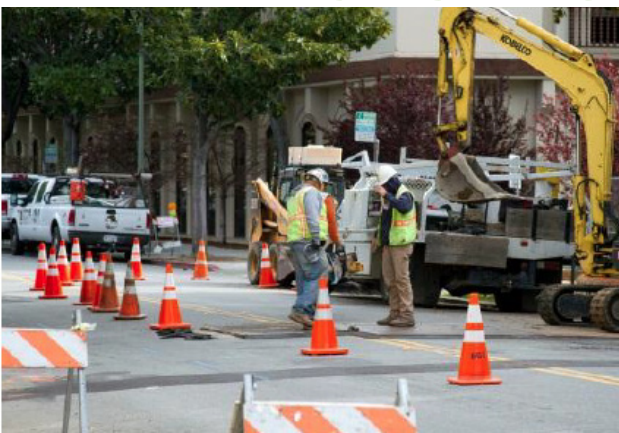
<b>Adult Entertainment</b>	
Closing-out Sale <i>Note: up to 90 days.</i>	\$100.00 each
Closing-out Sale Renewal (Two Maximum) <i>Note: up to 30 days.</i>	\$100.00 each
Noise Exception Permit	\$166.00 each

Firearms Dealer	
Fire Arms Dealer Master Permit - New	\$2,955.00 per year
Fire Arms Dealer Master Permit - Renewal	\$534.00 per year
Massage Establishment	
A. Massage Establishment - New	\$397.00 per year
B. Massage Establishment - Renewal	\$200.00 per year
C. Massage Establishment - Sale or Transfer of Interest	\$133.00 per occurrence
Massage Establishment - Non-Certified (New)	\$405.00 per year
Massage Establishment - Non-Certified (Renewal)	\$265.00 per year
Massage Establishment - Sole Proprietor (New)	\$265.00 per year
Massage Establishment - Sole Proprietor (Renewal)	\$195.00 per year
Massage Practitioner - Non-Certified (New)	\$199.00 per year
Massage Practitioner - Non-Certified (Renewal)	\$133.00 per year
Massage Technician - New	\$199.00 each
Massage Technician - Renewal	\$132.00 each
Miscellaneous	
Business Location Change	\$1,113.00 per occurrence
Solicitation for Commercial Purpose <i>Note: Does not include DOJ Fingerprint and Rolling Processing Fee</i>	Look under Solicitor/Peddler Master License
Solicitor Employee (Under Master License) <i>Note: Duration of Master License per employee. Does not include DOJ Fingerprint and Rolling Processing Fee</i>	\$44.00 each
Solicitor/Peddler Master License <i>Note: Does not include DOJ Fingerprint and Rolling Processing Fee</i>	\$44.00 per year
Pushcart Vendors	
Pushcart Vendor - Additional Cart	\$49.00 per quarter
Pushcart Vendor - Location and/or Cart Change	\$248.00 each
Pushcart Vendor - New <i>Note: Does not include DOJ Fingerprint and Rolling Processing Fee</i>	\$408.00 per quarter
Pushcart Vendor - Renewal	\$139.00 per quarter
Pushcart Vendor Employee - New <i>Note: Does not include DOJ Fingerprint and Rolling Processing Fee</i>	\$123.00 each
Pushcart Vendor Employee - Renewal	\$100.00 each
Secondhand Dealers	
Secondhand Dealer - DOJ	\$333.00 per application
Secondhand Dealer - New	\$400.00 per application
Secondhand Dealer - Renewal	\$100.00 per application



Taxicab	
A. Taxicab - Master License (New)	\$2,975.00 per year
B. Taxicab - Master License (Renewal)	\$1,334.00 per year
Taxicab - Driver <i>Note: Up to 4 yrs. Does not include DOJ Fingerprint and Rolling Processing Fee.</i>	\$55.00 annually
Taxicab - Vehicle Inspection for Each Vehicle	\$77.00 per year
Taxicab Driver - Replacement or Transfer Fee	\$67.00 each
Valet Parking	
Valet Parking Permit Application	\$717.00 per application
Valet Parking Sign & Curb Markings	\$1,211.00 each
Valet Permit Application Renewal (Annual)	\$108.00 per year
Valet Short-Term Application Fee	\$337.00 per application

# Public Works Fees





CITY OF  
**PALO  
ALTO**

## Engineering

Encroachment Permit	
Fence	\$1,792.00 each
Residential	\$862.00 each
VTA Bus Shelter Installation/Relocation	\$444.00 each
Inspection Fees	
Off Hour Inspection	\$278.00 per hour
Permit Fees	
Certificate of Compliance/Certificate of Correction/Map Amendment <i>Note: Including public or private subdivision streets</i>	\$5,055.00 per occurrence
Improvement Plan Review <i>Note: Price for initial deposit. 100 percent of processing costs will be recovered plus any permit fees.</i>	\$1,480.00 per deposit
Street Cut Fees	
A. Pavement Condition: Poor	\$11.00 per square foot
B. Pavement Condition: Fair/At-Risk	\$13.00 per square foot
C. Pavement Condition: Good	\$16.00 per square foot
D. Pavement Condition: Very Good - Excellent	\$23.00 per square foot
Service Lateral Connection	\$1,618.00 each

## Storm Drain

Permit Fees	
Flood Variance Fee	City Cost plus 15%
Flood Zone Determination Letter	\$124.00 per letter
Stormwater Treatment Feature Operations and Maintenance Inspection <i>Note: Previously known as Storm Drain Inspection Fee</i>	\$663.00 per inspection (up to 4 hours) plus \$103.00 per hour thereafter
Temporary Elevation Benchmarks	\$425.00 per benchmark

## Operations

Maintenance & Repair		
	Regular Time	Overtime & Holiday
Construction & Repair	\$153.00 per hour	\$230.00 per hour
Electric Vehicle Charger Connection	\$0.00 to \$2.00 per connection	
Electric Vehicle Charger Connection Overstay	\$0.00 to \$5.00 per hour	
Electric Vehicle Charging	\$0.23 per kilowatt hour	
Newsrack Impoundment Fee	\$194.00 first day + \$3.00 each subsequent day	
Supervision	\$170.00 per hour	\$255.00 per hour
Sweeping Services	\$134.00 per hour	\$201.00 per hour
Traffic Control/Graffiti Services	\$129.00 per hour	\$194.00 per hour
Traffic Property Damage	\$129.00 per hour	\$194.00 per hour
Tree Services	\$139.00 per hour	\$209.00 per hour
Map/Plan Review Fees		
Home Improvement Exception - Trees	\$737.00 per application	
IR Review - Trees	\$343.00 per application	
Tree Removal		
Protected Tree Removal	\$437.00 per removal	
Record Management Fee	\$28.00 per file	
Tree Removal	\$133.00 per inch of damage plus planting installation	

## Wastewater Treatment

Industrial Waste Discharge Fees	
Industrial Waste Discharge - Automotive <i>Note: Vehicle service facilities with process discharges.</i>	\$582.00 annually
Industrial Waste Discharge - Basic <i>Note: Non-categorical/small-categorical with only minor pollutant concerns.</i>	\$3,423.00 annually
Industrial Waste Discharge - Best Management Practices (BMP) <i>Note: Small, non-categorical facilities with minimal process discharge.</i>	\$1,281.00 annually
Industrial Waste Discharge - Exceptional Waste (High volume) <i>Note: Short-term, non-standard discharges with permit duration more than 10 days or volume more than 20,000 gallons.</i>	\$6,091.00 per permit

Industrial Waste Discharge - Exceptional Waste (Low volume) <i>Note: Short-term, non-standard discharges with permit duration less than 10 days and volume less than 20,000 gallons.</i>	\$3,452.00 per permit	
Industrial Waste Discharge - Full (Categorical) <i>Note: Categorical industrial users with ability to impact the Regional Water Quality Control Plant.</i>	\$7,789.00 annually	
Industrial Waste Discharge - Full (Non-categorical) <i>Note: Significant industrial users with ability to impact the Regional Water Quality Control Plant.</i>	\$4,974.00 annually	
Industrial Waste Discharge - Groundwater <i>Note: Groundwater remediation discharges.</i>	\$1,310.00 annually	
Industrial Waste Discharge Fees - Liquid Waste Disposal Fee		
	Per Load of 1,000 gal. or Less	Each Additional 500 gal.
Septic Tank & Portable Toilet Waste Disposal	\$86.00	\$40.00



CITY OF  
**PALO  
ALTO**



CITY OF  
**PALO  
ALTO**

IN COMPLIANCE WITH  
AMERICANS WITH DISABILITIES ACT (ADA) OF 1990,  
THIS DOCUMENT MAY BE PROVIDED  
IN OTHER ACCESSIBLE FORMATS.

For information contact:  
ADA Coordinator  
City of Palo Alto  
285 Hamilton Ave  
(650) 329-2550





CITY OF  
**PALO  
ALTO**



CITY OF  
**PALO  
ALTO**

# PALO ALTO

Spanish explorers named the area for the tall, twin-trunked redwood tree they camped beneath in 1769. Palo Alto incorporated in 1894 and the State of California granted its first charter in 1909. The City has long been known for its innovative people and its exploration of ideas that have changed the world. In Palo Alto, our history has always been about the future.

**CITY OF PALO ALTO**

250 HAMILTON AVENUE,  
PALO ALTO, CA 94301

**P** 650.329.2100

**W** [CITYOFPALOALTO.ORG](http://CITYOFPALOALTO.ORG)