

CALTRAIN ELECTRIFICATION



GRADE CROSSING PEDESTRIAN ACCESS NOTICE | November 2022

UPCOMING ACTIVITIES AND ACCESS IMPACTS

Beginning on November 14 and until November 30, Caltrain will be performing grounding and bonding work for the signaling system that will require temporary closures of one side of the Churchill, Alma, E Meadow and Charleston pedestrian crossings to one side of pedestrian traffic on Mondays-Fridays. **Vehicular traffic will not be impacted.**

From November 14 to November 18, between the hours of 9:30 am and 4 pm, there will be a temporary pedestrian closure of one side of the Churchill crossing.

From November 17 to November 29 (Mondays through Fridays only,) between the hours of 9:30 am and 4 pm, there will be a temporary pedestrian closure of one side of the Alma crossing.

From November 28 to November 30, between the hours of 9:30 am and 4 pm, there will be a temporary pedestrian closure of one side of the East Meadow crossing

From November 28 to November 30, between the hours of 9:30 am and 4 pm, there will be a temporary pedestrian closure of one side of the Charleston crossing

Illuminated and directional signs will direct pedestrians the opposite side of the crossing. **Only one side of each crossing (northern or southern) will be closed at a time. Only one crossing will have impacted access at a time.**

A sample sidewalk diversion plan is provided on the reverse of this notice.

CONSTRUCTION ACTIVITIES

During the temporary access closures, crews will install a grounding and bonding for the signaling system for Caltrain Electrification. Work will

consist of placement of 10-foot rods at each corner of the crossing to ground electricity, testing of the rods, burial of the rods and restoring any galvanized steel and paint to pre-existing conditions.

Caltrain has established a dedicated project hotline and email for residents concerned about these potential impacts.

PROJECT OVERVIEW

Over the last decade, Caltrain has experienced a substantial increase in ridership and anticipates further increases in ridership demand as the Bay Area's population grows. Caltrain Electrification, scheduled to be operational by 2024, will electrify and upgrade the performance, operating efficiency, capacity, safety, and reliability of Caltrain's commuter rail service.

Caltrain electrification is a key component of the Caltrain Modernization Program and consists of replacing diesel-hauled with an electric train system for services between Fourth and King Street Station in San Francisco and the Tamien Station in San Jose. The project will include the installation of new electrical infrastructure and the purchase of electric trains.

CONTACT INFORMATION

Caltrain has established a project information line and project e-mail for Caltrain Electrification to record and respond to questions and comments from residents and stakeholders.

The project information line can be reached at **650.399.9659** or toll free at **800.660.4287**.

The project e-mail is calmod@caltrain.com

Sign-up for weekly construction updates online at: www.caltrain.com/projects/electrification/get-involved

FOR MORE INFORMATION

 calmod.org

Para traducción llama al 1.800.660.4287
如需翻譯,請電 1.800.660.4287
Cần dịch thuật, xin gọi 1.800.660.4287

CONTACT

MAIL: 2121 S. El Camino Real, Suite 300
San Mateo, CA 94403

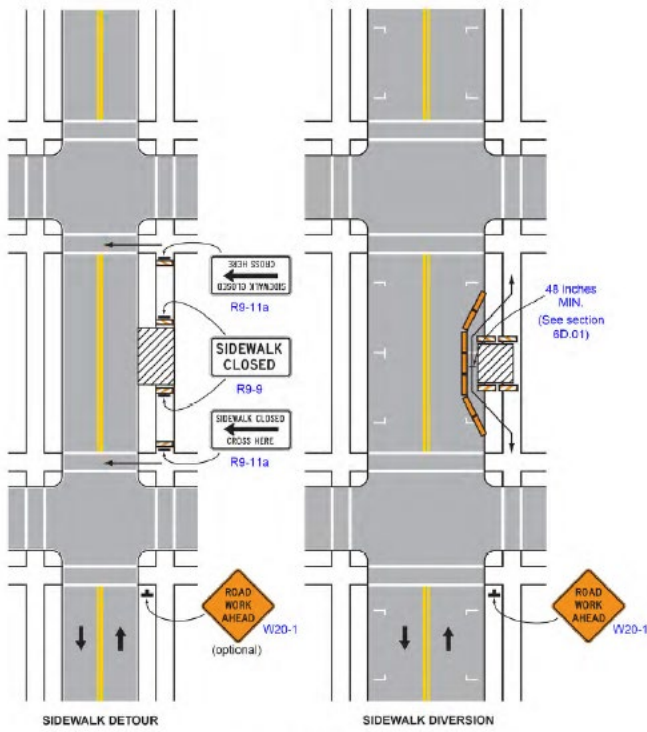
 650.399.9659

 calmod@caltrain.com


CALTRAIN ELECTRIFICATION

CHURCHILL AVENUE CLOSURE NOTICE | November 2022

SAMPLE PEDESTRIAN DIVERSION ROUTE





FOR MORE INFORMATION

 calmod.org

Para traducción lláma al 1.800.660.4287
如需翻譯,請電 1.800.660.4287
Cần dịch thuật, xin gọi 1.800.660.4287

CONTACT

MAIL: 2121 S. El Camino Real, Suite 300
San Mateo, CA 94403

 650.399.9659
 calmod@caltrain.com

