

Safe Riding on Shared Paths, Sidewalks, Tunnels & Overpasses

As the fastest moving people on shared bike/pedestrian paths, sidewalks, tunnels, and overpasses, people on bikes, scooters and skateboards need to be courteous to all other users.

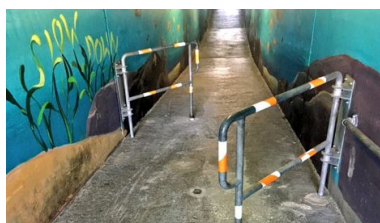


On shared paths:

- Ride on the right side of the path.
- Leave enough room for people going the other direction. On narrow paths, ride single file.
- Slow down, especially at places where two paths cross.
- Pass slower users only when it is safe.
- Be mindful of small children and dogs on leashes.

On sidewalks:

- Avoid riding on sidewalks when you can. They are for pedestrians.
- It's illegal to ride on the sidewalk in the Downtown and California Avenue Business Districts.
- If the sidewalk is the safest choice (on a busy street with no bike lane, for example), ride at pedestrian speed, be courteous, and give pedestrians the "right of way."



In tunnels and overpasses:

"If you see a walker, be a walker." You may ride through a tunnel or overpass only if no one else is using it. Otherwise, walk your bike.

A note about pack riding:

Riding in a pack can be fun, but you are responsible for your own safety. Don't be a follower.

- Be careful at intersections -- just because the riders in front of you went through doesn't mean it's safe for you to go.
- Ride in a straight line, don't suddenly stop or make a turn.
- Don't ride more than two across because cars won't be able to pass you.

