



ARTS & INNOVATION DISTRICT URBAN DESIGN MASTER PLAN

FUKUJI PLANNING & DESIGN--FGY ARCHITECTS--SANDIS ENGINEERS

SEPTEMBER 24, 2012



ARTS & INNOVATION DISTRICT URBAN DESIGN MASTER PLAN

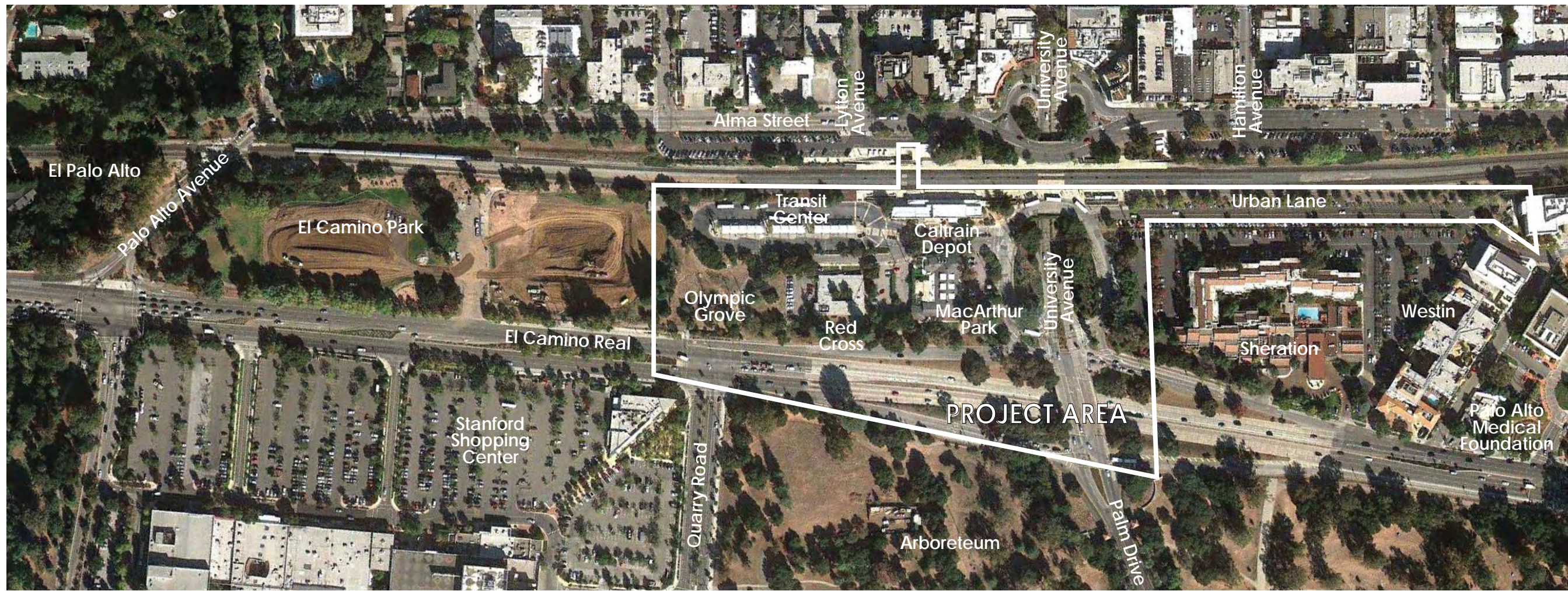
INDEX OF SUPPORTING EXHIBITS

1. Existing Site Context & Project Area
2. Illustrative Plan
3. Illustrative Plan Detail
4. Existing Ownership & Leases
5. Existing Comprehensive Plan
6. Proposed Comprehensive Plan
7. Proposed Zoning Plan
8. Proposed Transit Circulation
9. Proposed Pedestrian Network
10. Proposed Bicycle Routes
11. Proposed Automobile Site Access
12. Proposed Public Spaces
13. Perspective--New Transit Center at University Avenue
14. Perspective--Entrance to the Arts & Innovation District
15. Perspective--Urban Lane at the Caltrain Depot
16. Perspective--Theater in the Park
17. Perspective--El Camino Real as Grand Boulevard

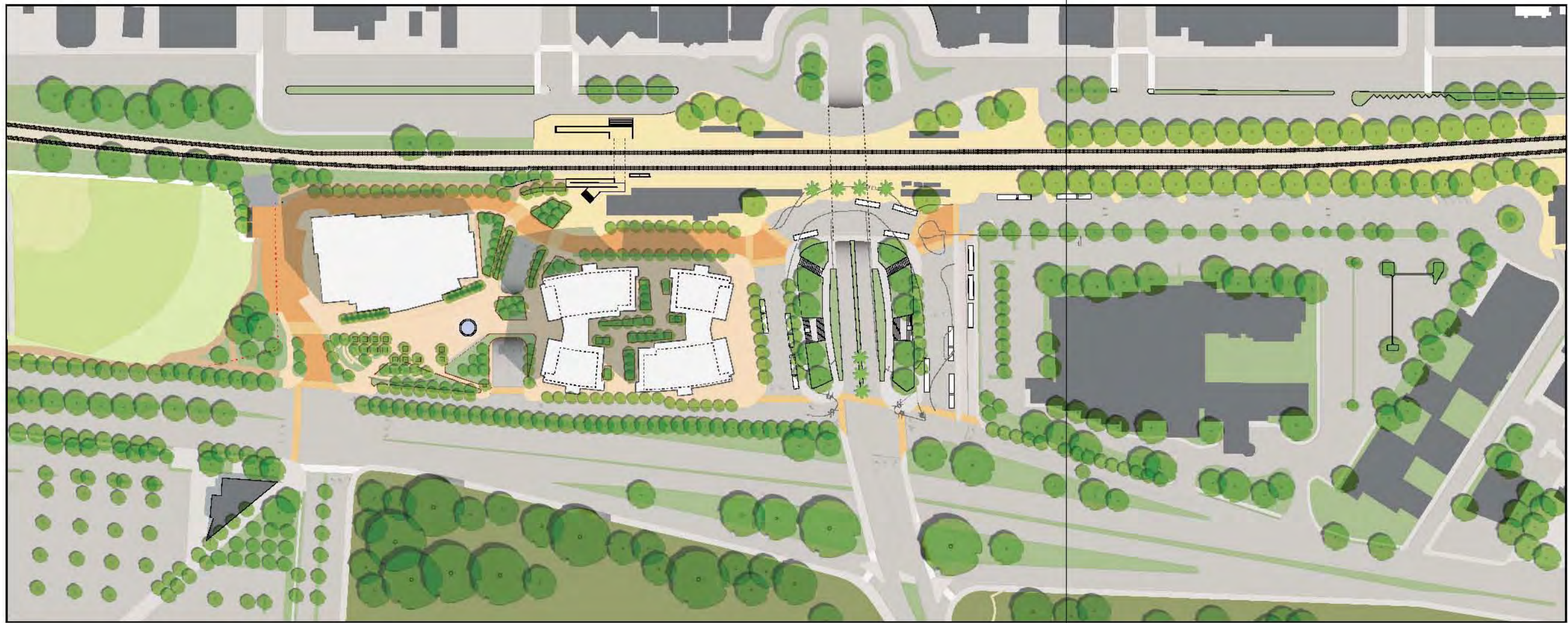
FUKUJI PLANNING & DESIGN & FGY ARCHITECTS

SEPTEMBER 18, 2012

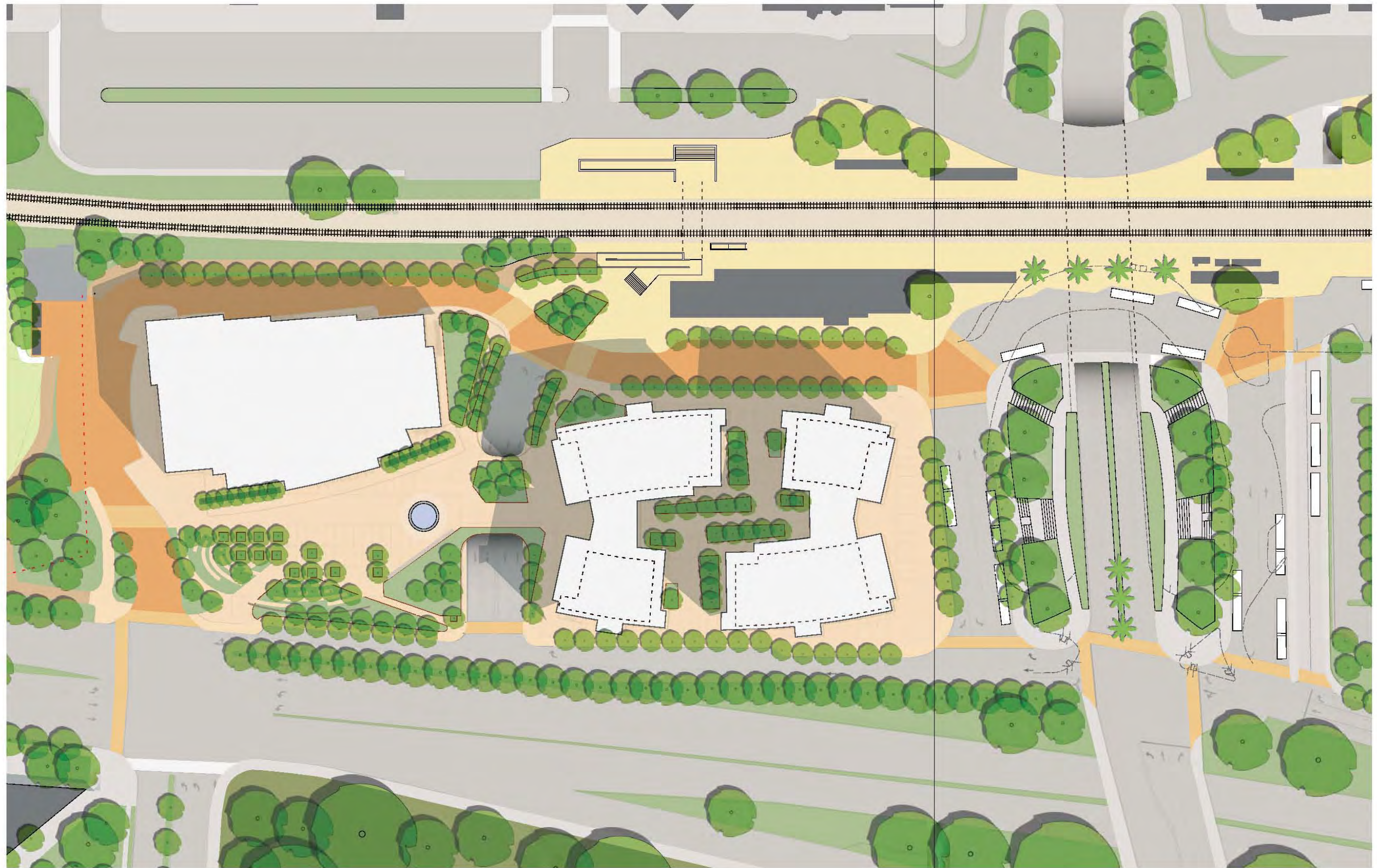




EXISTING SITE CONTEXT & PROJECT AREA












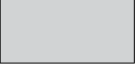


ILLUSTRATIVE PLAN



Illustrative Plan Detail



EXISTING PROPERTY OWNERSHIP & LEASES

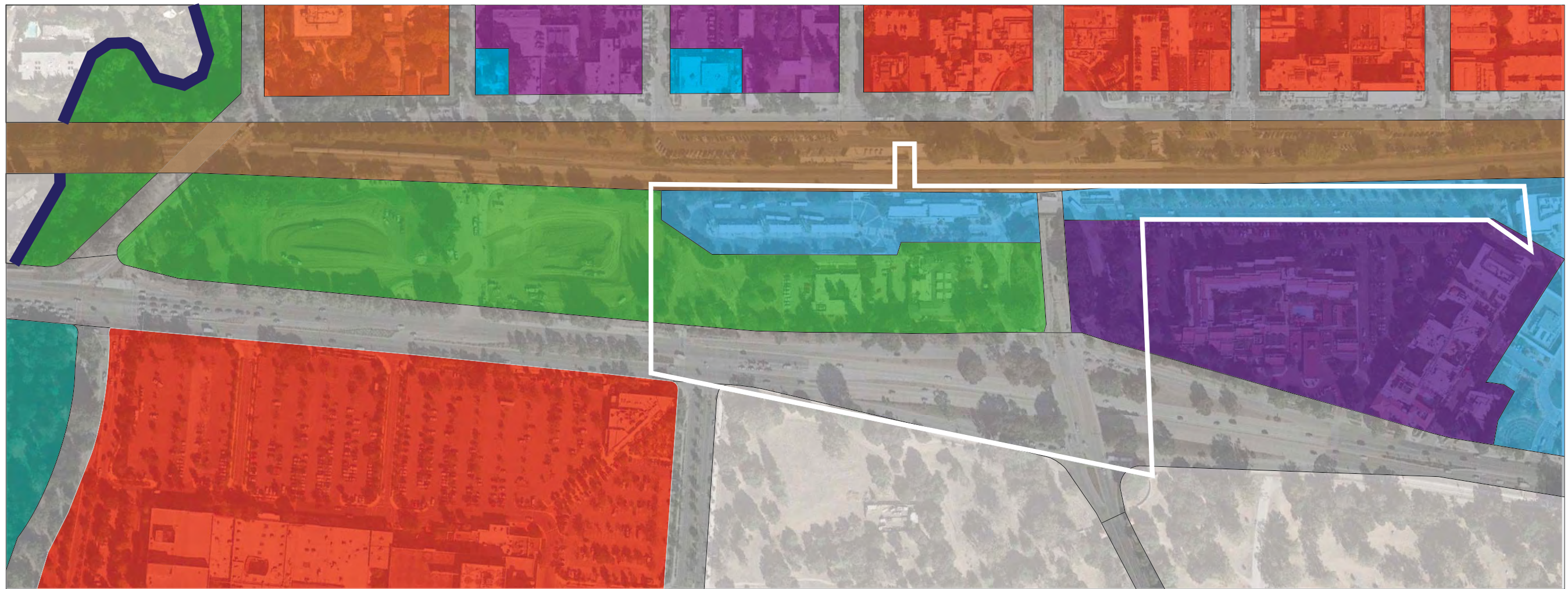
	Park Parcels leased to the City of Palo Alto by Stanford		Pacific Hotel Development Venture LLC
	Peninsula Corridor Joint Powers Board		Leased to the American Red Cross by Stanford
	State Highway		Leased to Macarthur Park by Stanford
	City Streets		Depot Parcel sublease by City of Palo Alto to "VTA", (owned by Stanford)
	Leased to Sheraton Hotel by Stanford		Owned by Stanford
	Palo Alto Medical Foundation of Health		Parking Lease Agreement from the City of Palo Alto to the Pacific Hotel Development Venture



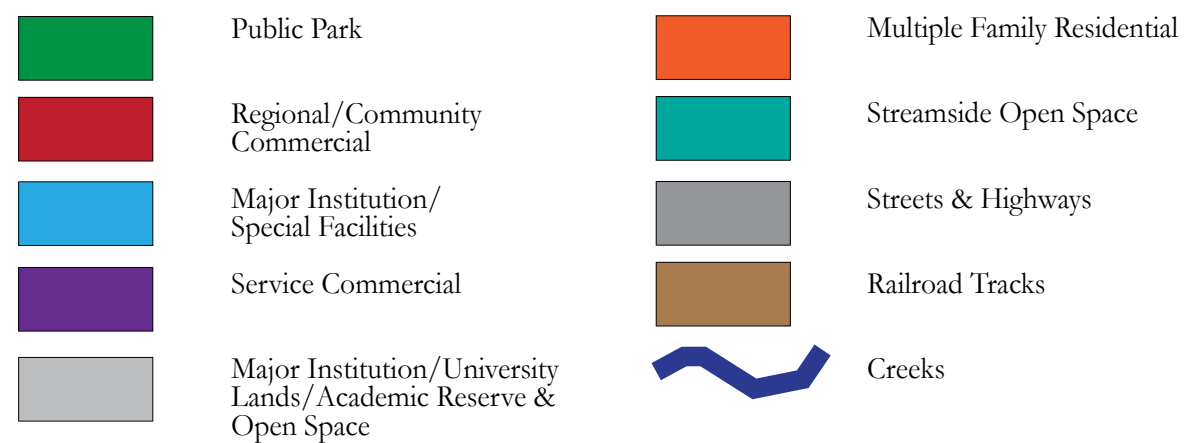
ARTS & INNOVATION DISTRICT

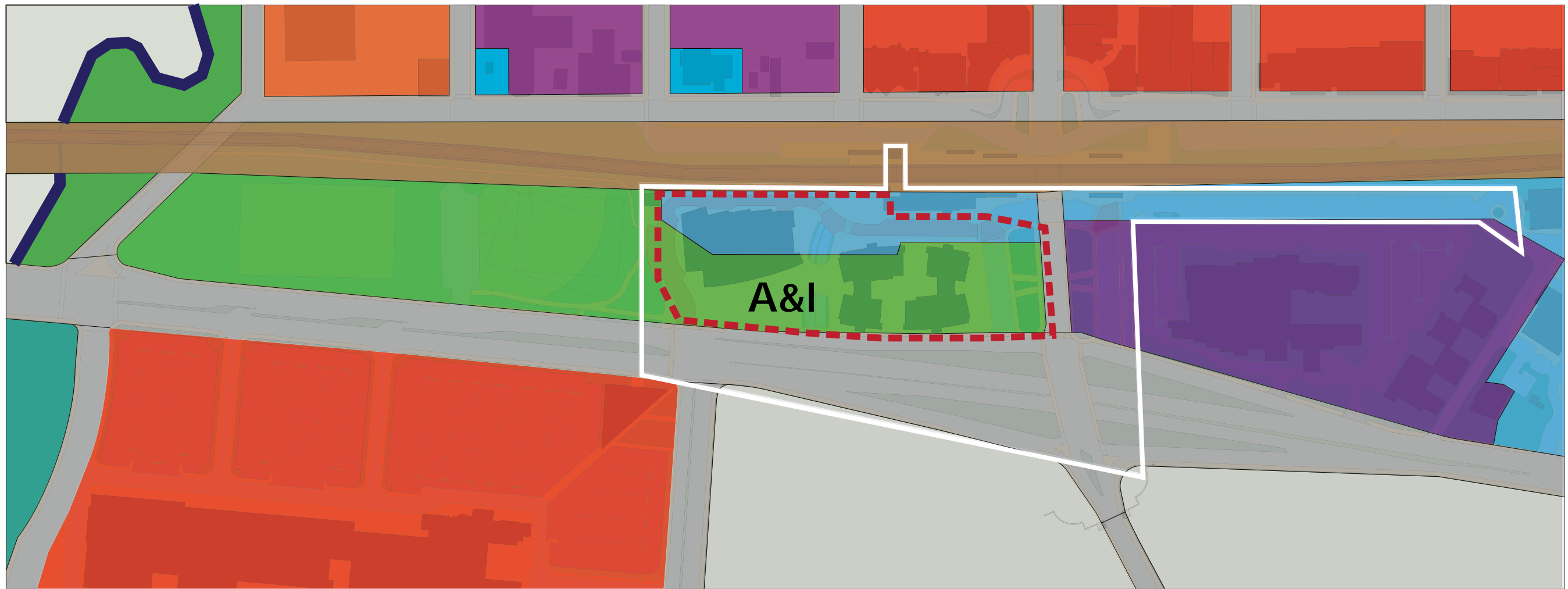
FUKUJI PLANNING & DESIGN & FGY ARCHITECTS

SEPTEMBER 18, 2012



EXISTING COMPREHENSIVE PLAN LAND USE DESIGNATION





PROPOSED COMPREHENSIVE PLAN LAND USE DESIGNATION

NEW DISTRICT DESIGNATION



Arts & Innovation District

EXISTING DESIGNATIONS



Public Park



Regional/Community Commercial



Major Institution/
Special Facilities



Service Commercial



Major Institution/University
Lands/Academic Reserve &
Open Space



Multiple Family Residential



Streamside Open Space



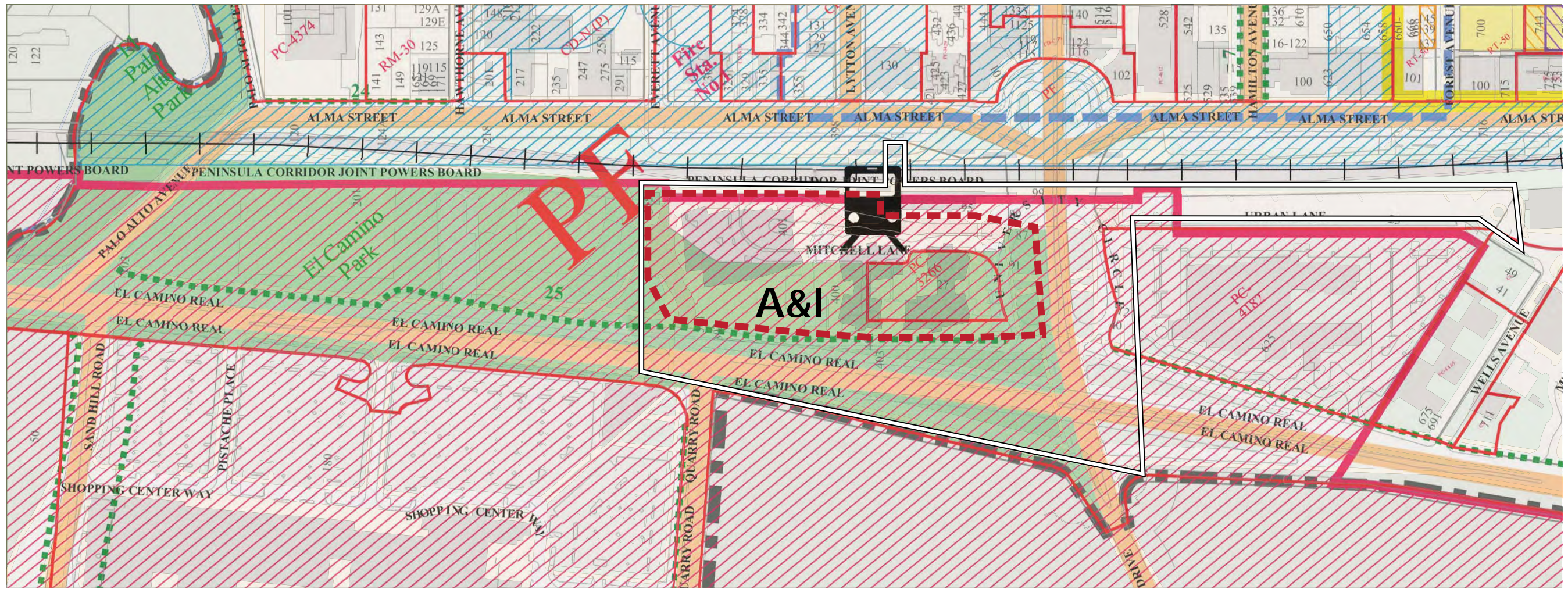
Streets & Highways



Railroad Tracks



Creeks



BOUNDARY OF PROPOSED ARTS & INNOVATION DISTRICT OVER EXISTING ZONING

NEW DISTRICT DESIGNATION



Arts & Innovation District

EXISTING DESIGNATIONS



District Boundaries



Stanford Lands



Public Facilities



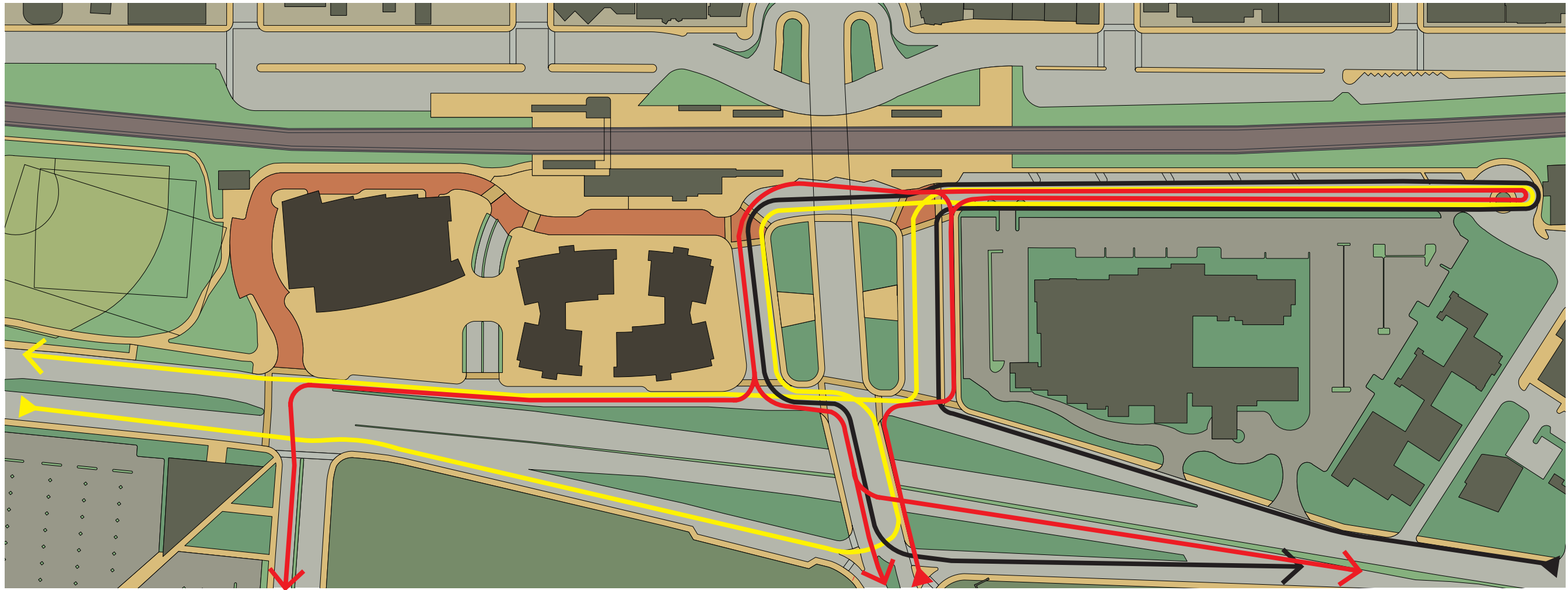
Major Arterial






Special Setback

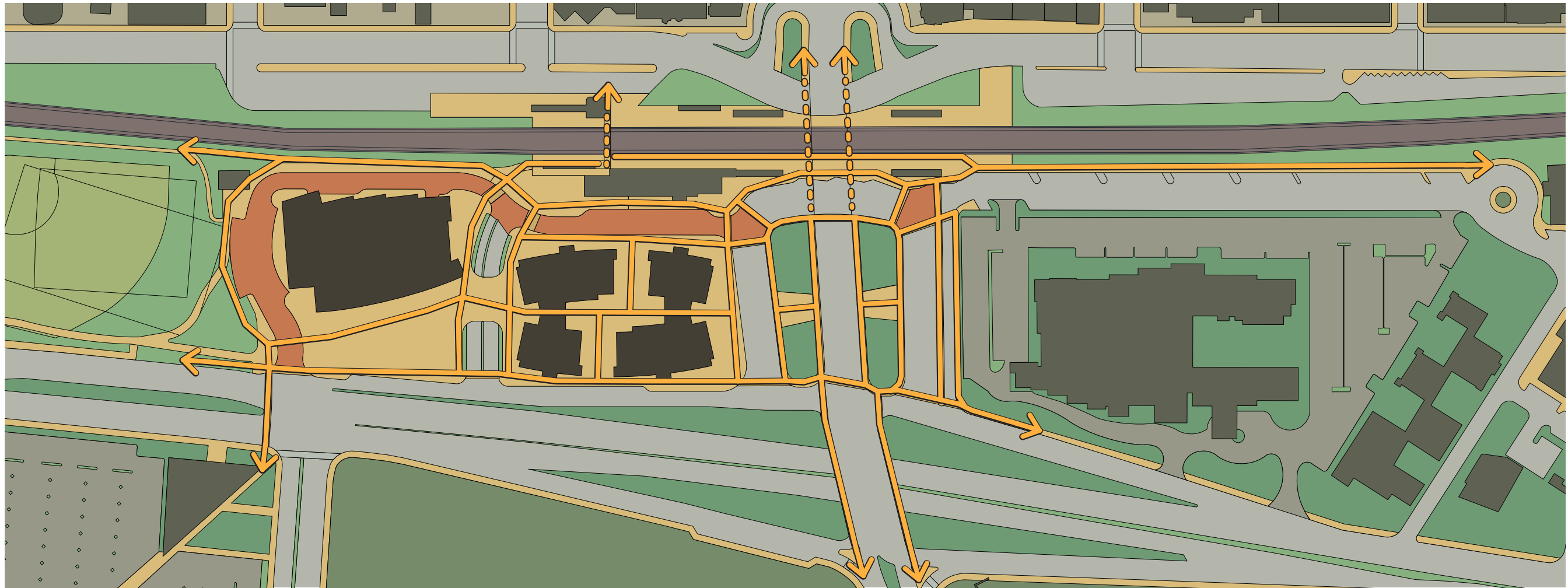


Multi-modal Transit Center





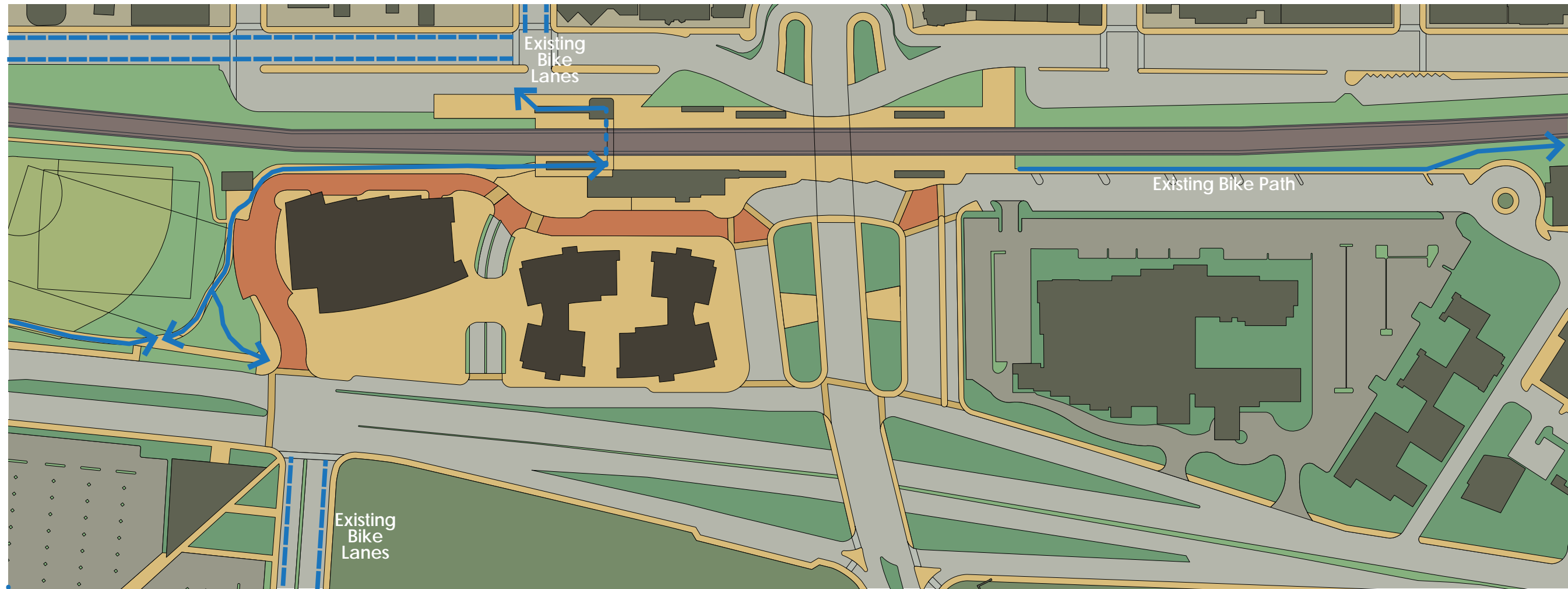
PROPOSED TRANSIT ROUTES

-  VTA
-  Marguerite
-  Samtrans






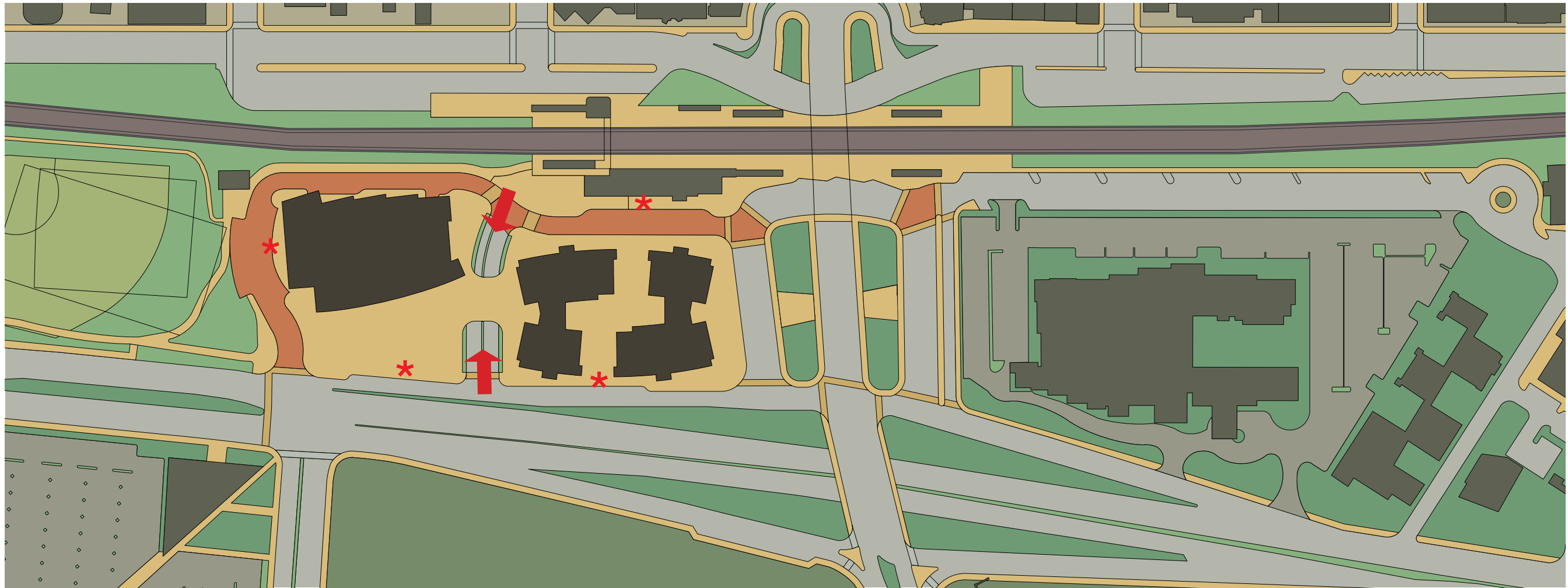
PROPOSED PEDESTRIAN NETWORK

-  Street Level Pedestrian Network
-  Below Grade Pedestrian Connections



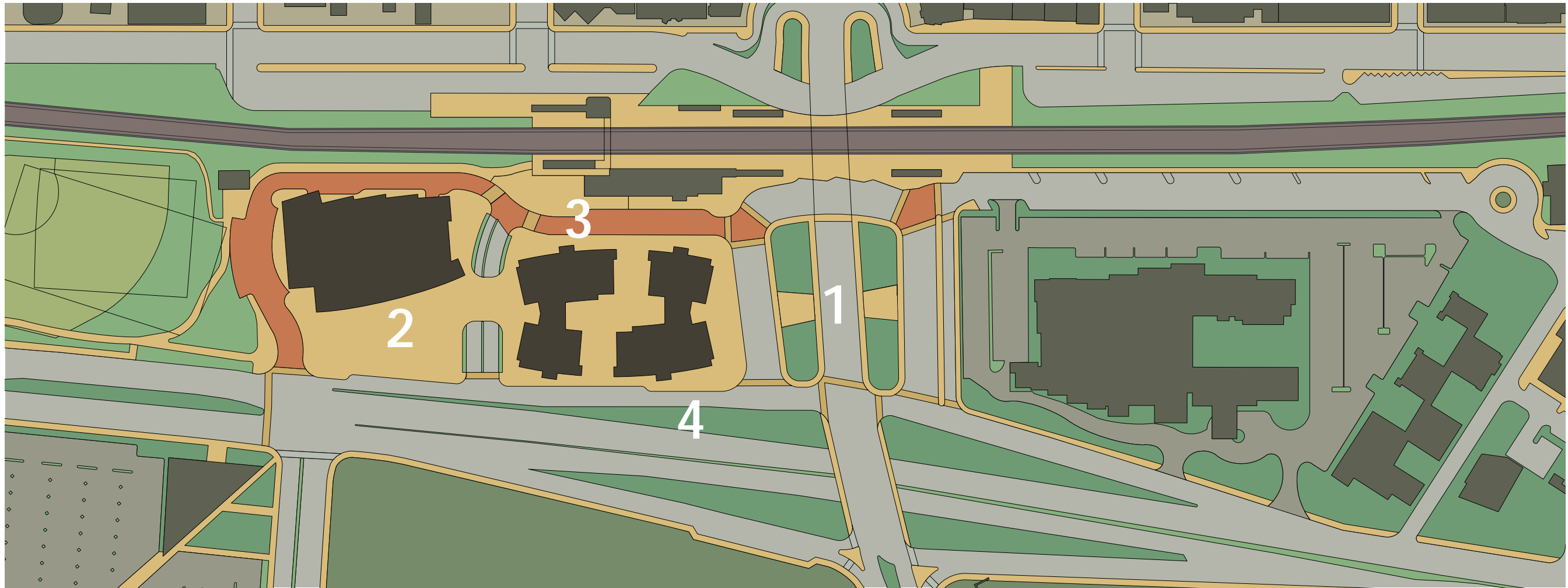
PROPOSED BICYCLE ROUTES

-  Bike Lanes
-  Bike Paths
-  Underground Bicycle Connection



PROPOSED AUTOMOBILE SITE ACCESS

- * Drop off/Pick up
- ➔ Parking Access



PROPOSED PUBLIC SPACES

1. Transit Plaza
2. Theater Plaza
3. Pedestrian Priority Street
4. Grand Boulevard Street Frontage



New Transit Center at University Avenue -- View from Palm Drive



Entrance to the Arts and Innovation District -- View from Caltrain Depot



Urban Lane at the Caltrain Depot -- View to Theater



Theater in the Park -- View from El Camino Park



El Camino Real as Grand Boulevard -- View along Local Accessway