



# City of Palo Alto

## City Council Staff Report

(ID # 10311)

---

**Report Type: Consent Calendar**

**Meeting Date: 6/3/2019**

**Summary Title: Mitchell Park Court Park Improvement Ordinance**

**Title: Adoption of a Park Improvement Ordinance for Pickleball Courts at Mitchell Park**

**From: City Manager**

**Lead Department: Community Services**

### **Recommended**

Staff recommends that City Council adopt a Park Improvement Ordinance (Attachment A) for pickleball courts at Mitchell Park.

### **Background**

The City of Palo Alto (City) has seen an increase in the number of pickleball players and requests for pickleball space. The Palo Alto Pickleball Club (formally Silicon Valley Pickleball Club) has been very active in Palo Alto. The club began using Mitchell Park Tennis Courts 5, 6, 7 on a first-come first-serve basis, which was not supported by the City's court policy. Staff saw an increase in pickleball play and felt it was important to address the growing demand for pickleball space. On August 28, 2018, staff presented recommended changes to the Court Use Policy to the Parks and Recreation Commission (PRC). These changes would allow pickleball players to use Mitchell Park Courts 5,6,7 on a first come- first serve basis as well as providing dedicated times in evenings and weekends. These policy recommendations were supported by the PRC and approved by City Council on October 15, 2018. Both staff reports can be found here:

<https://www.cityofpaloalto.org/civicax/filebank/blobdload.aspx?t=47888.16&BlobID=66491https://www.cityofpaloalto.org/civicax/filebank/blobdload.aspx?t=59206.86&BlobID=67123>

### **Discussion**

The policy change legitimized the use of courts by pickleball players and provided dedicated times for pickleball play. However, the policy change still does not provide enough designated space to meet demand. When the pickleball community uses Mitchell Park courts 5, 6, 7 they must put together nets that they have purchased, set them up and take them down. With the continued growth of pickleball, staff feels it is important to provide additional, dedicated pickleball space for the Palo Alto community to use.

The Community Services Department and a PRC Ad Hoc Committee began looking into available space to provide designated pickleball courts. Given the extensive pickleball play on Mitchell Park Tennis Courts 5, 6, 7, staff proposed converting those courts to permanent pickleball courts. The proposal was met with resistance from the tennis community, specifically around the idea of losing lit courts and preferring a method that kept the courts available for joint use. As a result, staff and the PRC Ad Hoc Committee continued to explore other options for dedicated pickleball courts.

The proposal below is a design that minimizes the loss of lighted tennis courts, provides enough dedicated pickleball space to handle evening play and keeps the use of joint space to provide expansion for high demand times. The proposal includes the following changes to Mitchell Park courts 5,6, and 7:

- Area outside of Mitchell Park court 5 becomes 2 newly constructed pickleball courts
- Mitchell Park tennis court 5 is converted to 4 designated pickleball courts
- Mitchell Park Tennis Courts 6 and 7 remain multi-use courts with times designated for pickleball and tennis. Pickleball would be given priority 8:00am-2:30pm seven days a week. Tennis would be given priority 3:00 pm-10pm seven days a week. If courts are not in use, anyone can use the court but must vacate the space if the priority sport arrives and needs the space.



This plan would result in:

- Eight designated pickleball courts, including two that were recently converted paddleball courts. Four of the courts are lighted.
- Four designated lighted tennis courts
- Two multi-use lighted courts (two tennis courts, or seven pickleball courts)

### Public Outreach

On February 19, 2019, staff held a public meeting to discuss the proposal to the users of the Mitchell Park courts. There were approximately 60 people in attendance; most of the users were pickleball players with a smaller contingent of tennis players. A summary of feedback received at the meeting is below.

Pickleball feedback:

- Would like a seating area included in design
- Addition of water fountain would benefit all court users
- Likes the mix of dedicated hours for multi-use courts, split seems fair

- Tree leaves on courts are an ongoing issue

#### Tennis feedback:

- Keep all courts multi-use so courts are not left unused
- Lighted tennis courts are crucial for tennis
- A lot of young youth play tennis and need a place to play
- Tennis courts are not available on weekend mornings at Mitchell.
- Grouping tennis courts together is also important to the tennis community

On April 23, 2019 the Parks and Recreation Commission voted unanimously to recommend that City Council adopt the Park Improvement Ordinance for pickleball courts at Mitchell Park. Approximately 45 members of the public attended the meeting and expressed their support for the proposed plan. The Park Improvement Ordinance includes the following:

1. Remove four trees, and follow City Arborist's replanting recommendation;
2. Install two new pickleball courts and perimeter fencing in passive grass area adjacent to existing tennis courts;
3. Install concrete walkway along exterior of the two new pickleball courts;
4. Convert one (existing) tennis court into four dedicated pickleball courts;
5. Stripe the two (existing) tennis courts for tennis and pickleball use to allow for shared use; and
6. Install one drinking fountain adjacent to the tennis/pickleball courts.

#### **Timeline**

Planning Department Permit—May 2019

City Council contract approval—July 2019

Anticipated start of construction—August 2019

Anticipated completion of project—October 2019

#### **Resource Impacts**

Funding for this project comes from existing capital improvement project PG-06001 Tennis and Basketball Court Resurfacing CIP PG-06001. The engineers estimate for the Mitchell Park pickleball court addition and tennis court resurfacing project is \$452,000.

#### **Policy Implications**

The proposed Park Improvement Ordinance is consistent with the recommendations in the Parks, Trails, Natural Open Space and Recreation Master Plan (Program 1.A.5).

**Environmental Review**

This Project is categorically exempt from CEQA pursuant to Regulation 15303 for New Construction or Conversion of Small Structures.

**Attachments:**

- Attachment A: Mitchell Park Pickleball Park Improvement Ordinance

ORDINANCE NO. \_\_\_\_\_

Ordinance of the Council of the City of Palo Alto Approving and Adopting a Plan for Pickleball Courts at Mitchell Park

The Council of the City of Palo Alto does ORDAIN as follows:

SECTION 1. Findings. The City Council finds and declares that:

(a) Article VIII of the Charter of the City of Palo Alto and section 22.08.005 of the Palo Alto Municipal Code require that, before any substantial building, construction, reconstruction or development is commenced or approved, upon or with respect to any land held by the City for park purposes, the Council shall first cause to be prepared and by ordinance approve and adopt a plan therefor.

(b) Mitchell Park (the "Park") is dedicated to park purposes. (See Municipal Code section 22.08.200)

(c) The City intends to authorize construction of two new pickleball courts, converting one (existing) tennis court to four dedicated pickleball courts, and striping two (existing) tennis courts for tennis and pickleball use at the Park.

(d) The plan of improvements shall comprise as follows:

- (1) Remove four trees, and follow City Arborist's replanting recommendation;
- (2) Install two new pickleball courts and perimeter fencing in passive grass area adjacent to existing tennis courts;
- (3) Install concrete walkway along exterior of the two new pickleball courts;
- (4) Convert one (existing) tennis court into four dedicated pickleball courts;
- (5) Stripe the two (existing) tennis courts for tennis and pickleball use to allow for shared use; and
- (6) Install one drinking fountain adjacent to the tennis/pickleball courts.

(e) Exhibit A depicts the expected implementation of the plan of improvements.

(f) The plan of improvements described above is consistent with park, playground, recreation, and conservation purposes.

(g) The City Council desires to approve the plan of improvements described above.

SECTION 2. The City Council hereby approves the plan of improvements in the Park described in this Ordinance.

SECTION 3. The City Council finds that this ordinance falls under the California Environmental Quality Act (CEQA) exemptions found in Title 14 California Code of Regulations Section 15303 (New Construction of Small Facilities or Structures).

SECTION 4. This ordinance shall be effective on the thirty-first day after the date of its adoption.

INTRODUCED:

PASSED:

AYES:

NOES:

ABSENT:

ABSTENTIONS:

ATTEST:

\_\_\_\_\_  
City Clerk

\_\_\_\_\_  
Mayor

APPROVED AS TO FORM:

APPROVED:

\_\_\_\_\_  
Deputy City Attorney

\_\_\_\_\_  
City Manager

\_\_\_\_\_  
Director of Community Services

\_\_\_\_\_  
Director of Administrative Services





**SIEGFRIED**

3244 Brookside Road  
Suite 100  
Stockton, California 95219  
209-943-2021  
Fax: 209-942-0214  
www.siegfriedeng.com

- CIVIL ENGINEERING
- STRUCTURAL ENGINEERING
- LAND SURVEYING
- LANDSCAPE ARCHITECTURE

REVISIONS  
No. Date Description

PROJECT

**CITY OF PALO ALTO  
MITCHELL PARK  
RESTORATION  
PROJECT**

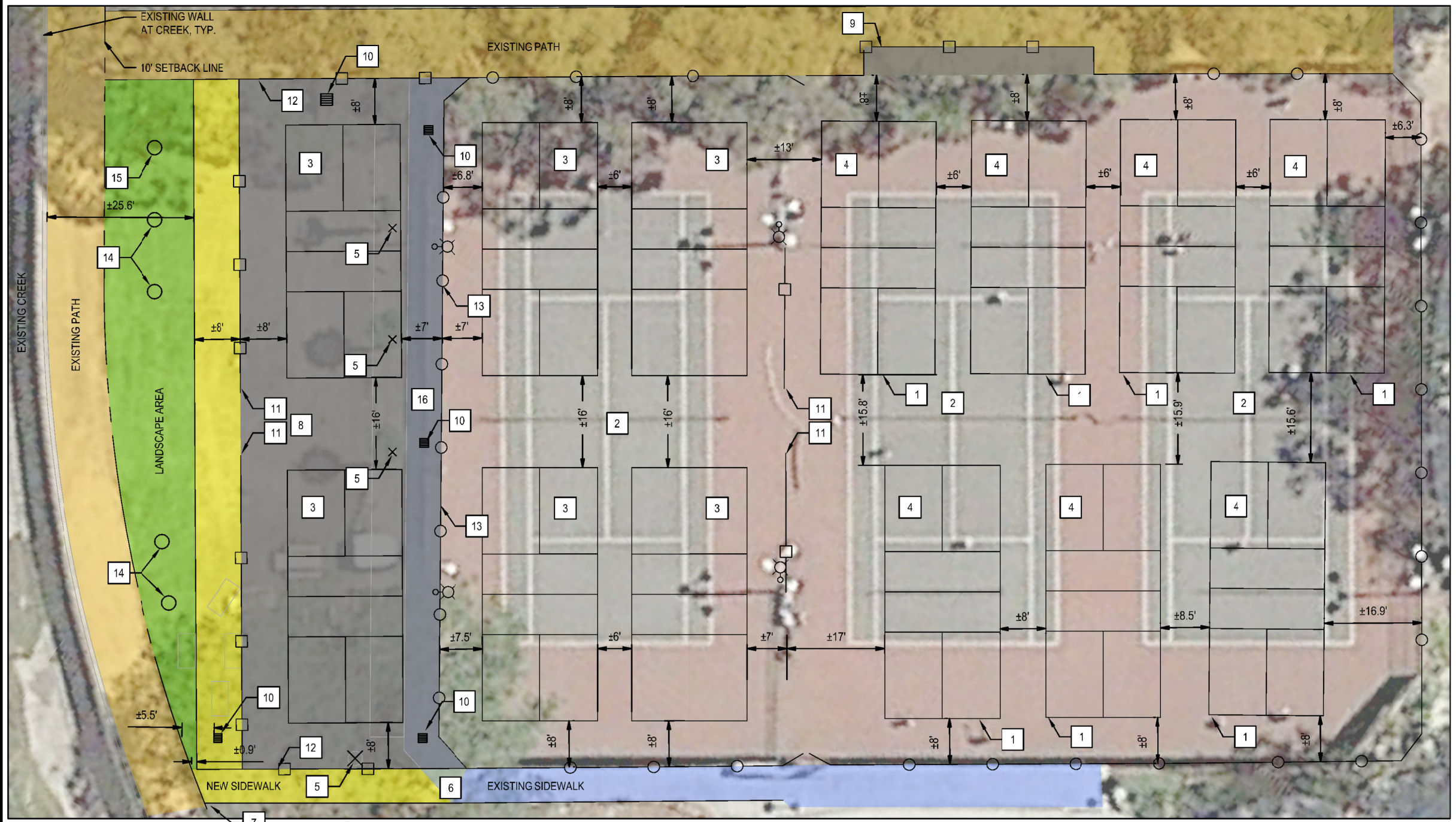
600 E. MEADOW DR.  
PALO ALTO, CA  
94306

SHEET TITLE

**PICKLEBALL SITE  
PLAN ALT**

Proj Mgr MDE  
Drawn by MDE  
Date 04/22/2019  
Job No. 17285

SHEET: **7**  
OF: 7

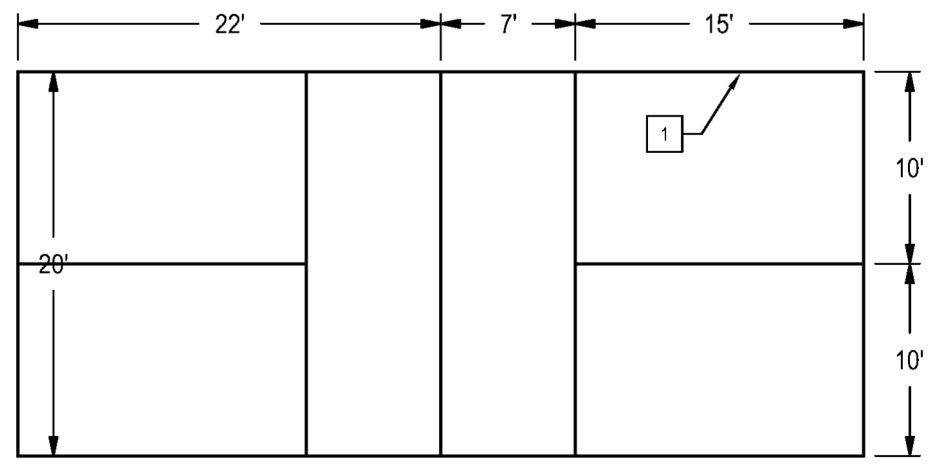
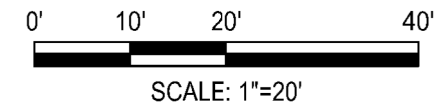
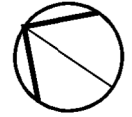


**1 PICKLEBALL COURT TYPICAL LAYOUT**  
1"=20'

**KEY NOTES**

- |   |   |
|---|---|
| <ul style="list-style-type: none"> <li>1 PICKLEBALL STRIPING - BLENDED USTA STANDARD BLUE 25% WHITE</li> <li>2 78' TENNIS COURT, SHOWN FOR REFERENCE ONLY</li> <li>3 STANDARD PICKLEBALL COURT PER DETAIL 1 THIS SHEET, AND SHEETS 15 &amp; 16</li> <li>4 PROPOSED PICKLEBALL STRIPING</li> <li>5 REMOVE EXISTING TREE</li> <li>6 EXTEND EXISTING CONCRETE PATHWAY TO NORTHWEST, TERMINATE AT EXISTING 10' DG PATHWAY. CONTRACTOR TO DETERMINE WITH CITY IF RETAINING CURB REQUIRED AGAINST HILLSIDE.</li> <li>7 APPROXIMATE LOCATION OF NEW DRINKING FOUNTAIN, COORDINATE EXACT LOCATION WITH CITY</li> <li>8 INSTALL NEW ASPHALT CONCRETE PICKLEBALL COURTS, COURTS SHALL BE 2" ASPHALT CONCRETE (3/8" MAX. AGGREGATE SIZE ON FINAL LIFT) OVER 8" CLASS II AGGREGATE BASE.</li> </ul> | <ul style="list-style-type: none"> <li>9 MODIFY EXISTING FENCE TO ACCOMMODATE STORAGE OF ROLLING NETS WITH ACCESS GATES INSIDE COURTS. COORDINATE EXACT SIZE AND LOCATION WITH CITY.</li> <li>10 PROTECT IN PLACE EXISTING DRAIN INLET, POTENTIAL TIE IN LOCATION OF NEW COURT DRAINAGE SYSTEM</li> <li>11 INSTALL NEW LOW LEVEL FENCE AS SHOWN (MATCH EXISTING), COORDINATE WITH CITY FOR EXACT LOCATIONS AND LENGTHS</li> <li>12 INSTALL NEW HIGH LEVEL FENCE (MATCH EXISTING), COORDINATE WITH CITY FOR EXACT LOCATION OF GATES AND OPENINGS</li> <li>13 MODIFY EXISTING HIGH FENCE INTO LOW FENCE, COORDINATE WITH CITY FOR EXACT LOCATIONS OF OPENINGS.</li> <li>14 INSTALL NEW DYNAMITE CRAPE MYRTLE - 24" BOX, SINGLE TRUNK TREE (TYPICAL OF 4); INSTALL WOOD CHIPS FOR GROUND COVER</li> <li>15 INSTALL NEW ARBUTUS MARINA - 24" BOX, SINGLE TRUNK TREE (TYPICAL OF 1); INSTALL WOOD CHIPS FOR GROUND COVER</li> <li>16 REMOVE EXISTING CONCRETE WALKWAY</li> </ul> |
|---|---|

NOTE: DISTANCES SHOWN IN DETAIL 1 ARE APPROXIMATE. DISTANCES ARE SHOWN TO CENTER OF 2" STRIPE. CONTRACTOR TO VERIFY PRIOR TO ANY DEMOLITION. CONTRACTOR SHALL CONFIRM LAYOUT OF NEW COURTS WITH THE CITY PRIOR TO STRIPING.



NOTE: DISTANCES SHOWN ARE FOR QUICK REFERENCE ONLY. SEE SHEETS 15 & 16 FOR STRIPING NOTES AND DETAILS.

**2 PICKLEBALL COURT TYPICAL STRIPING**  
NOT TO SCALE

F:\projects\17258 Mitchell Park Tennis Courts Palo Alto\improvement plans\17258 Mitchell Site Plans Pickle Ball Court.dwg --- 04/22/19



