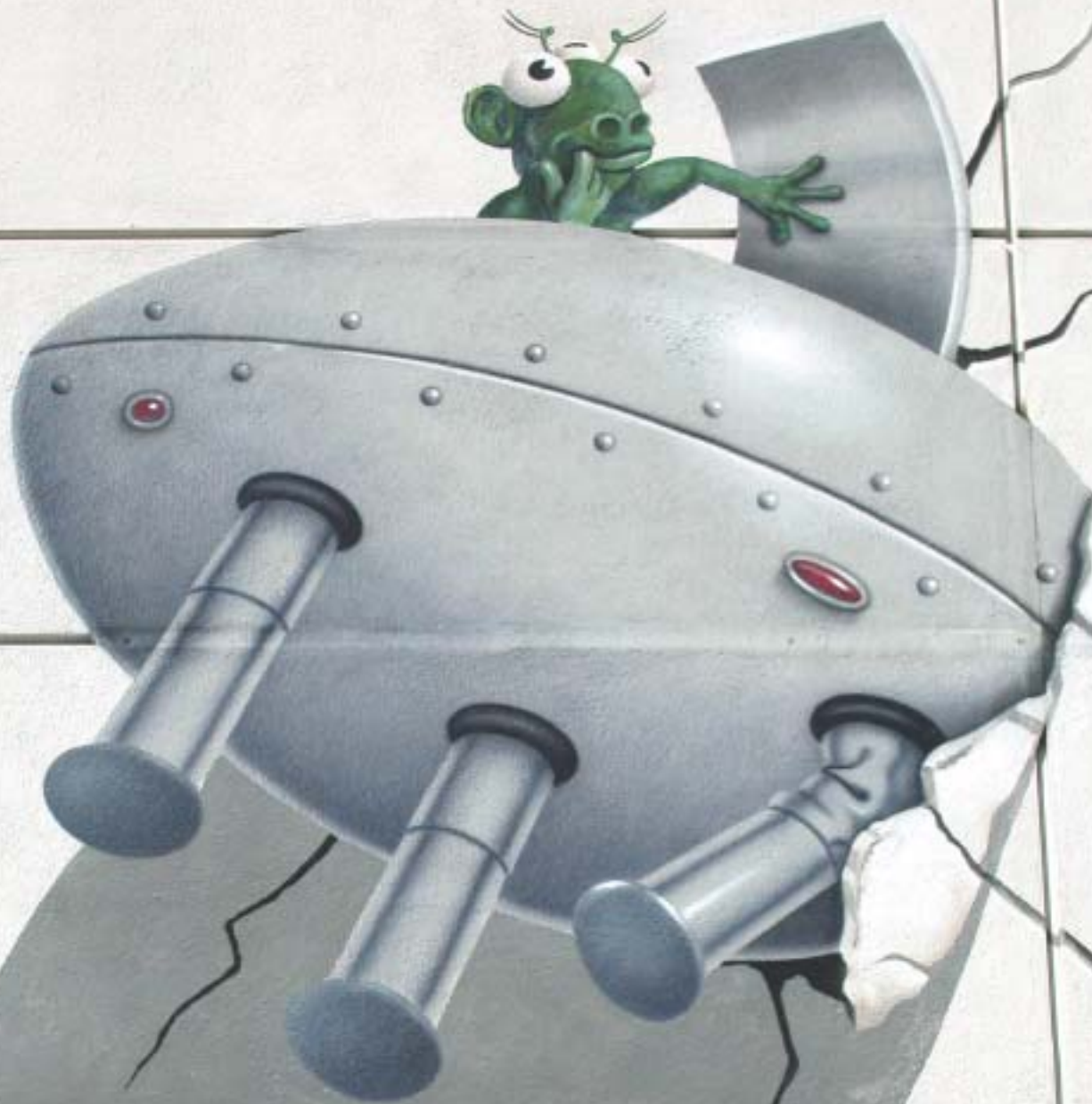


OFF THE WALL!



A Guide to Greg Brown's Murals in Palo Alto

walking tours • activities • stickers

A Palo Alto Art Center
Project LOOK! Family Guide



WALKING TOUR 1



DIRECTIONS: Follow the map and answer the questions below. Around the map are pictures that show a detail from the whole mural. When you find the real mural:

- Find the mural's matching sticker on the inside cover, peel it, and stick it over the detail.
- Look at the mural carefully, and answer the questions about it below. Write the answers on the blank line.
- Some questions do not have a blank line. For those questions, use your imagination and come up with an answer that may be an idea or a story. Then share your answer with someone walking on the tour with you.

Look for mural 1 (Hint: Look UP!)

One person is dressed like a mountain climber and hanging from a _____
The other is wearing a white suit and carrying a _____
Can you find their shadows? Both the people and the shadows are painted. The shadows are one of the things that make the people look real.

Look for mural 2

Find the boy with a fishing line stuck in the window grate. Look closely. Is the window real or painted? _____
What about the window next to it?

Brown makes his murals **site-specific**. That means that they relate to their surroundings. How does this mural relate to its surroundings?

Look for mural 3

You should see a gated entrance. If it is not open, you can still look through the gate and the window. There are three strange men floating on the wall. Each one has a _____ on his head.
Each one holds an object. What are the three objects? _____

This mural is very mysterious. What do you think is happening?

Look for mural 4

It is high up on the wall of a white building. Find the woman standing on the balcony. She is wearing a nun's habit. What is she holding in her hand? _____
The nun is painted, but the balcony is real. Brown makes her look like she is standing on the balcony by painting a shadow around her.

Look for mural 5

Do you see the lady watering the bush? Is the bush painted or real? _____
What is on her hose? _____
This is a painting of Greg Brown's grandmother. This really happened to her one day when she was watering her garden. Brown painted the mural without telling his grandmother so that one day she just happened upon it and was surprised!

Look for mural 6

Can you find a man pushing a stroller? What do you see inside the stroller?

When Brown first painted this mural, the stroller had a cat in it. Later on he changed it.

CONGRATULATIONS!
YOU FINISHED TOUR 1!

You're on your way to being a Mural Detective!



TOUR 1



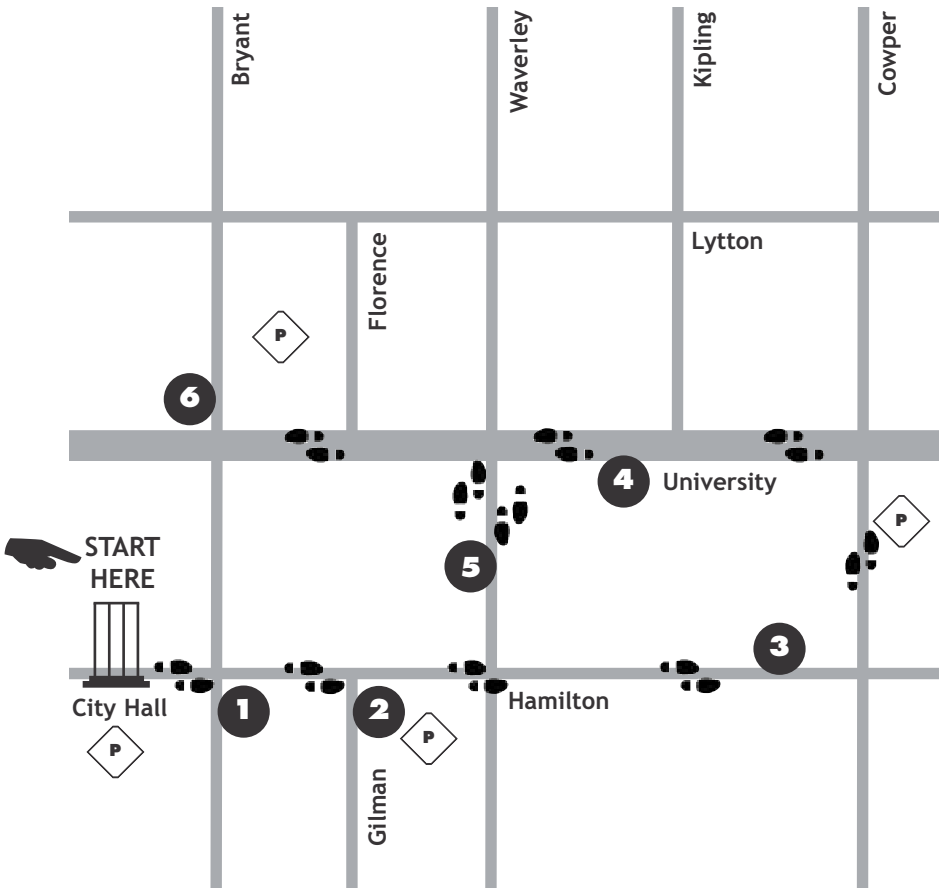
6. 280 University



5. 526 Waverley



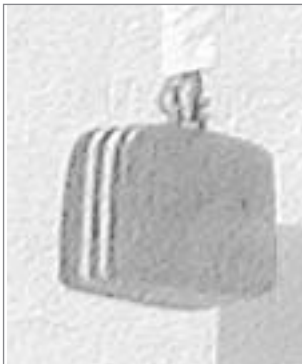
4. 436 University



3C. 499 Hamilton



3B. 499 Hamilton



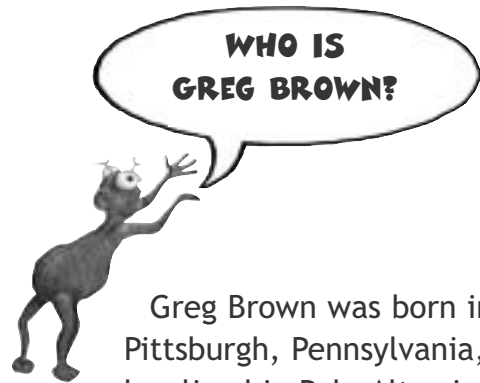
1. 300 Hamilton



2. 380 Hamilton



3A. 499 Hamilton

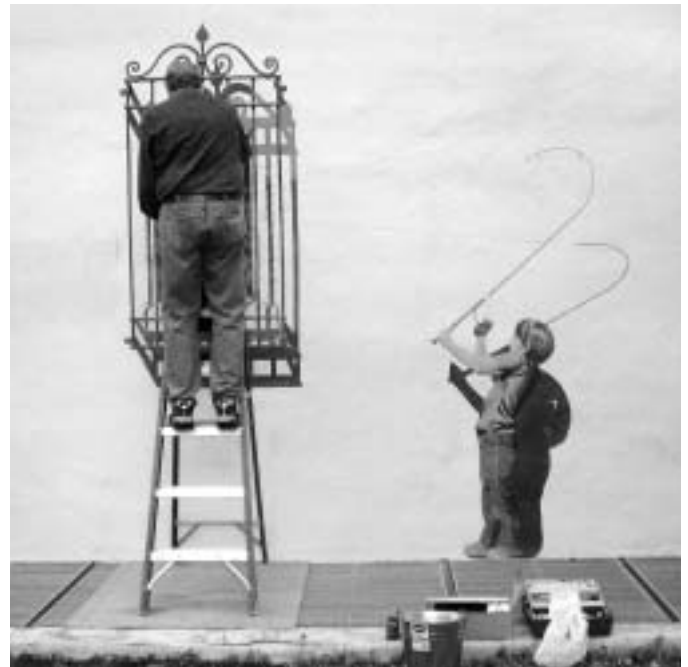


Greg Brown was born in Pittsburgh, Pennsylvania, and has lived in Palo Alto since he was two years old. As a teenager, he studied with Italian artist Roberto Lupetti. He also spent a year in London, England studying drawing, painting, and printmaking.

Brown painted his first mural in 1975 in Palo Alto. It was a life-size picture of a spy in a trench coat. It looked so real that it scared a city official walking by! Brown went on to create nine murals for the City of Palo Alto. The murals, called the *Palo Alto Pedestrian Series*, show people and animals in different playful scenes. Many of them are site-specific, showing scenes that relate to the place where they are painted.

Brown was inspired by Renaissance art when he visited his children, Justin and Whitney, in Italy. The Renaissance was a period in history (c.1400-1600) of many advances in art, science, and other areas of human study. The study of perspective (how things appear in space) and anatomy (the workings of the human body) helped artists to paint the world around them more accurately.

Brown uses another Renaissance technique called *trompe l'oeil*, a painting style which means 'trick the eye' in French. He carefully paints shadows and surfaces to make



painted objects seem real. In Brown's mural above, the painted shadows of the boy, the fishing rod, and the window make all of those things look real. The man on the ladder IS real, however. It is Greg himself making repairs to the mural!

In 1991, Brown was invited to paint a mural in Palo Alto's sister city of Linköping in Sweden. He was invited by the Neighbor's Abroad Association to paint a mural on a concert hall. The mural, pictured on the left, shows a man hanging out of a window and holding a violin. What is he hanging by?



Brown's original nine murals in the Palo Alto Pedestrian Series were funded by a CETA grant as part of the City of Palo Alto's Artist in Residence program. Of them, six remain and have become part of the Art in Public Places Program, established and maintained by the City of Palo Alto. The other eight were privately commissioned.



OFF THE WALL!

A Guide to Greg Brown's Murals in Palo Alto

A Palo Alto Art Center
Project LOOK! Family Guide
Written and designed by
Daisy Colchie, Project LOOK! Director
Sharon Fox, Publications Designer

This guide was created in conjunction with the Palo Alto Art Center's exhibition *Greg Brown: Unlikely Saints*, (May 11 - September 7, 2003) curated by Signe Mayfield.

Founded in 1971, the **Palo Alto Art Center** fosters creative process and thought by forging a greater appreciation and understanding of the visual arts through six to eight exhibitions annually, studio experiences and classes for adults and children, and related educational programs.

Project LOOK!, a program of the Palo Alto Art Center, develops educational programs and materials in connection with exhibitions at the Art Center, including docent-led tours of exhibitions for K-12th grade school groups, Family Days, and Family Guides.

The **Palo Alto Art Center Foundation** supports the vision and goals of the Palo Alto Art Center, promotes unique art experiences and education for people of all ages, and serves as the Center's advocates and ambassadors in the community.

The **Public Art Commission**, City of Palo Alto, acquires public art through direct purchase, competitions and donations, encourages and reviews public art in both City and private development projects, and carries out public education.

Murals 1, 2, 4, 5, 6, and 13: ©City of Palo Alto
Murals 3 a, b, c, 7, 8, 9, 10, 11, 12, and 14: ©Greg Brown
Murals photographed by Sharon Fox

© 2003 Palo Alto Art Center
All rights reserved. No part of this catalogue may be reproduced in any form by mechanical or electronic means, including information storage and retrieval systems, without permission in writing from the Palo Alto Art Center.

Off The Wall is made possible by a collaboration between the Palo Alto Art Center Foundation and the Public Art Commission, City of Palo Alto. Additional support for the Family Guide was received from the California Arts Council, a state agency, and the Arts Council Silicon Valley.



Palo Alto
ARTCenter

1313 Newell Road
Palo Alto, CA 94303
650.329.2366

Hours: Tues-Sat 10am-5pm
Sun 1-5pm, Thurs evenings 7-9pm
Admission is free