

DID YOU SAY POOL PARTY?

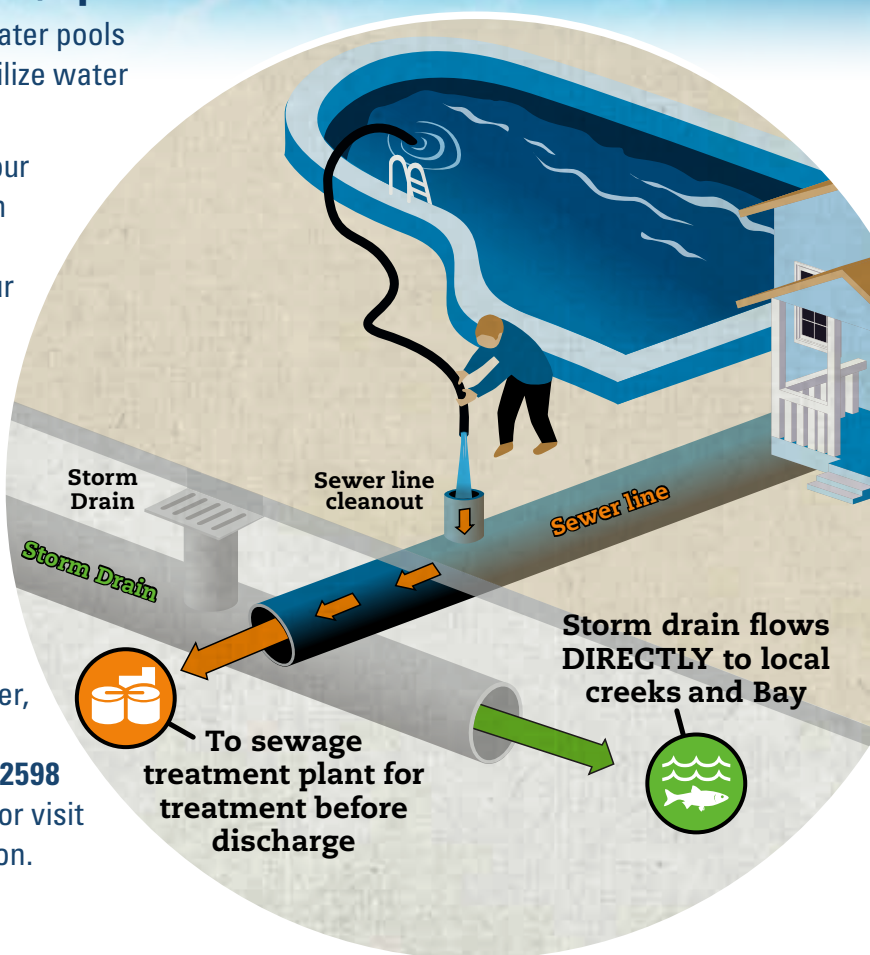


Warm weather means more time outside enjoying pool and spa time! If you need to drain your pool, spa or fountain, **drain to your sewer cleanout to keep copper, chlorine and other chemicals out of creeks and the Bay where it can harm wildlife. Instead, drain to the sanitary sewer.**

When draining your pool, spa or fountain:

- Remember that to conserve water pools should only be drained to stabilize water hardness or to make a repair.
- If a repair is needed, look for your sewer cleanout marked with an "S" usually located in a landscaped area. Can't find your cleanout? Visit cleanbay.org or call us for help.
- Use a garden hose to drain your pool, spa or fountain into the cleanout.
- Clean the filter on a dirt area away from the storm drain.

When you need to discharge a large amount of chlorinated water, please call the Regional Water Quality Control Plant at **650.329.2598** to avoid sewer backups. Call us or visit cleanbay.org for more information.



REGIONAL
WATER QUALITY
CONTROL PLANT

Individuals with disabilities who require accommodations to access City facilities, services or programs, or who would like information on the City's compliance with the Americans with Disabilities Act (ADA) of 1990, may contact the City's ADA Coordinator at (650) 329-2550 (voice) or email ada@cityofpaloalto.org
5/14 ♻️ Printed on 100% post-consumer recycled paper, bleached without chlorine.