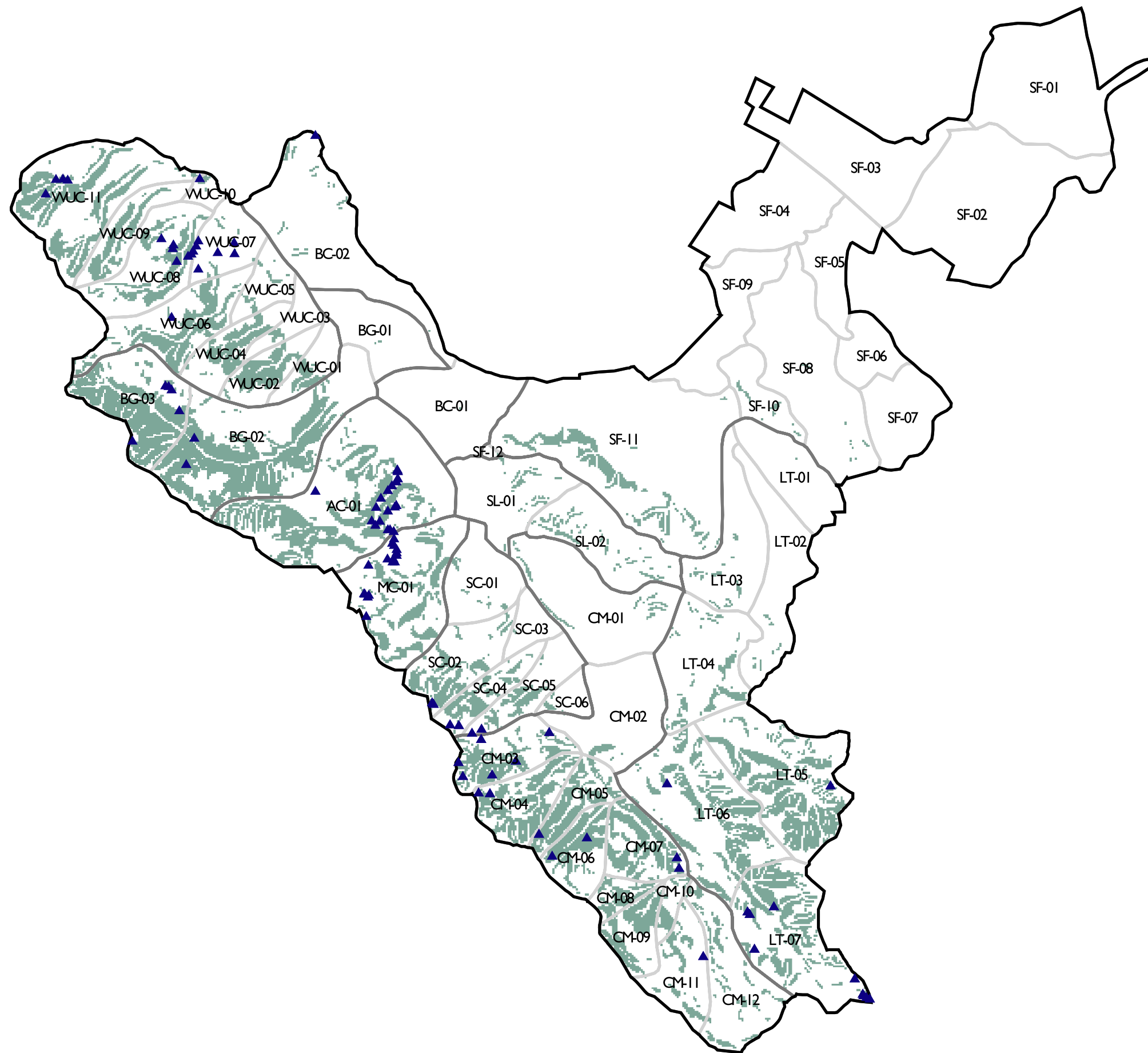







N:\NHC\080303\ARC\MAP\ARCHIVE\ARR\NEW REPORT FIGURES\ARR_02_06_04_CN



Legend

-  Approximate sources of debris-flows triggered during the storm of January 1982
-  Principal predicted debris-flow source areas
- CM-03** Sub-sub-watershed label
-  Sub-sub-watershed boundary
-  Sub-watershed boundary
-  Watershed boundary

Source: USGS OF 97-745E.



3000 0 3000 6000 9000 12000 Feet

Scale: 1 inch = 6000'

**Figure 12
Debris-Flows
San Francisquito Creek Basin**

**San Francisquito Creek Watershed Analysis
and Sediment Reduction Plan**

San Francisquito Creek Joint Powers Authority



nhc northwest hydraulic consultants, inc.
3950 industrial boulevard, suite 100c
west sacramento, california 95691
(916) 371-7400