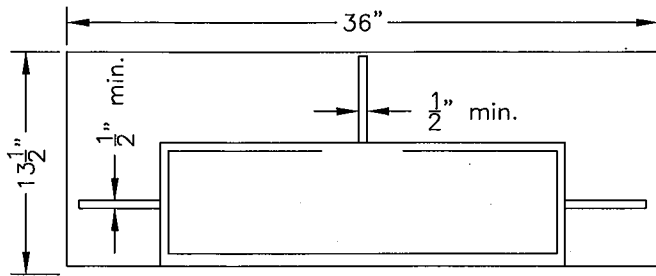
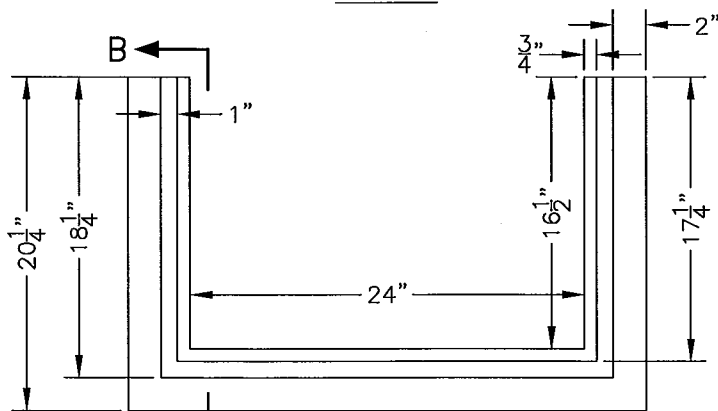


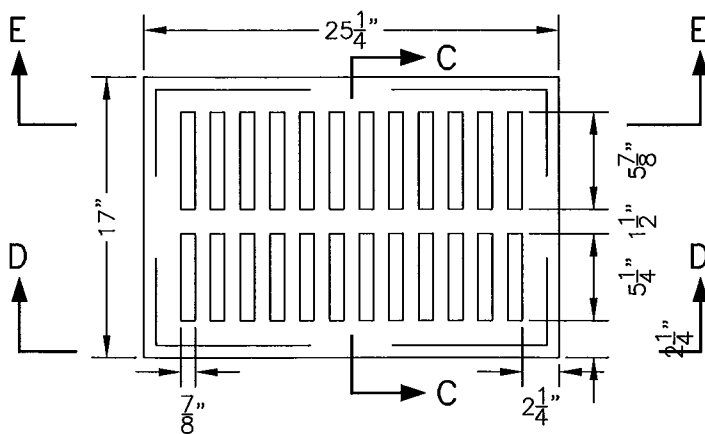
FRONT VIEW



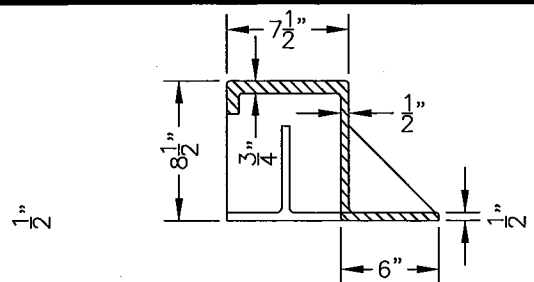
PLAN VIEW
HOOD



PLAN OF FRAME



PLAN OF GRATE
FRAME & GRATE



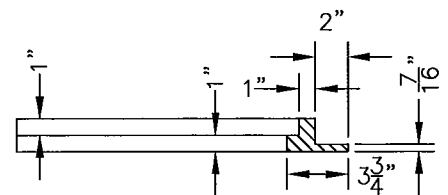
SECTION A-A

NOTES

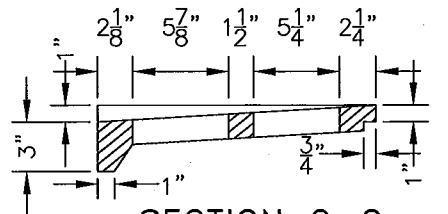
Castings shall be Phoenix Iron Works P-6001, South Bay Foundry Model SBF 1901 or approved equal cast iron frame, grate and hood.

Casting shall be given a hot asphalt dip.

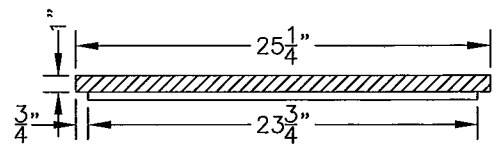
Gap between grate and frame shall be no greater than 1/4 inch upon final installation. Size of gap shall be approved by the City inspector.



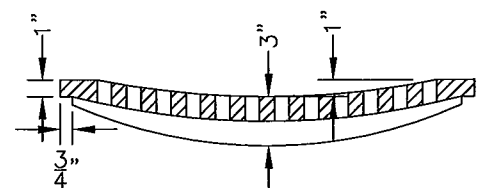
SECTION B-B



SECTION C-C



SECTION D-D



SECTION E-E

Rev	By	Date
0	DWH	12/14/92
1	MAR	01/02/02
2	JT	07/31/06

Approved by:

[Signature]
PE No. 35411
Date 5/14/07

Standard Hood,
Frame & Grate

City of Palo Alto Standard

Dwg No. 303

Scale: NTS